

Pneumatic Test Program – Test (RTG)

Preliminary work:

Diagnosis - Diagnostic Trouble Code (DTC) Memory	11 PSE
PSE Control Module Test	32 PSE

Note:

As of 12/93, in vehicles as of chassis end number 118 121, pressure or vacuum for the lock striker actuator is applied in parallel with the retractable trunk lid grip actuator. If during diagnosis, the retractable trunk lid grip actuator and vacuum line are determined to be leak-free, be certain to check the multiple connector (3, Figure 1) and lock striker actuator (2, Figure 1) for possible leakage as well.

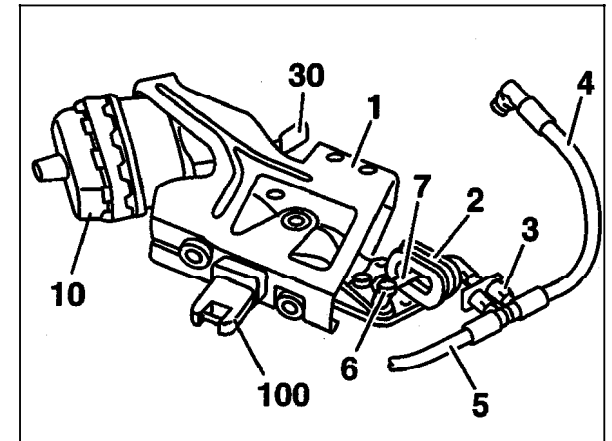
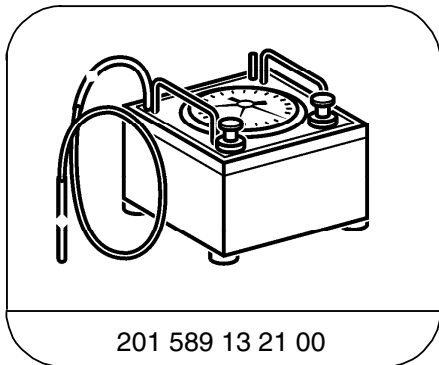


Figure 1

P88-5310-13

Special Tools



201 589 13 21 00

Tester

Pneumatic Test Program – Test (RTG)

A. Actuator

Preparation for Test:

1. Remove actuator (see SMS, Repair Instructions, Job No. 88-600).
2. Connect vacuum/pressure tester to the pneumatic connection of the actuator.
3. Seal the actuator throttle (arrow, Figure 2) with cap 000 987 29 45.

Parts Required for Test:

1	Pneumatic line	124 800 44 15
1	Connector	117 078 03 81
1	Cap	000 987 29 45

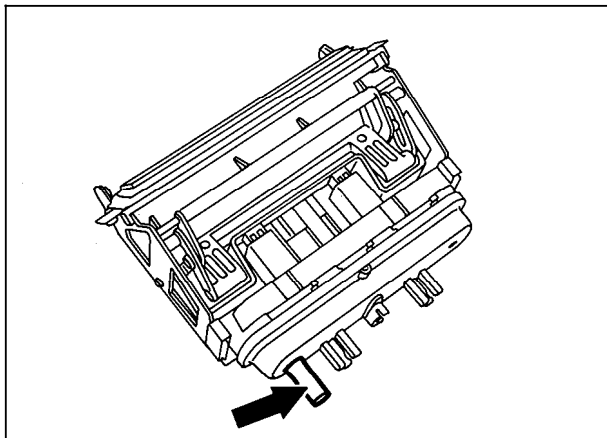


Figure 2

P80-5040-13

Pneumatic Test Program – Test (RTG)

A. Actuator

⇒	Test scope	Test connection	Test condition	Nominal value	Possible cause/Remedy
1.0	Actuator holding pressure	Yellow connector on tester.	Apply 600 mbar pressure to actuator.	Pressure loss 25 mbar in 1 minute	Actuator leaks. Replace actuator.
2.0	Actuator holding vacuum	Black connector on tester.	Apply 300 mbar vacuum to actuator.	Vacuum loss 25 mbar in 1 minute	Actuator leaks. Replace actuator.

Pneumatic Test Program – Test (RTG)

B. Lines

Preparation for Test:

1. Connect tester to one end of the pneumatic line and cap the other end with cap 000 987 29 45.

Parts Required for Test:

- | | | |
|---|-----------------------|---------------|
| 1 | Cap | 000 987 29 45 |
| 1 | Connector, 50 mm long | 007 997 61 82 |
| 1 | Connector | 129 805 04 44 |

⇒	Test scope	Test connection	Test condition	Nominal value	Possible cause/Remedy
3.0	Line holding pressure	Yellow connector on tester	Apply 600 mbar pressure to line.	Pressure drop 0 mbar in 1 minute	Pneumatic line leaks. Repair/replace line.
4.0	Line holding vacuum	Black connector on tester	Apply 300 mbar vacuum to line.	Vacuum loss 0 mbar in 1 minute	Pneumatic line leaks. Repair/replace line.