

Diagnosis – Function Test (PSE)

Preliminary work:

Diagnosis - Function Test 11 PSE/CL

Component Locations

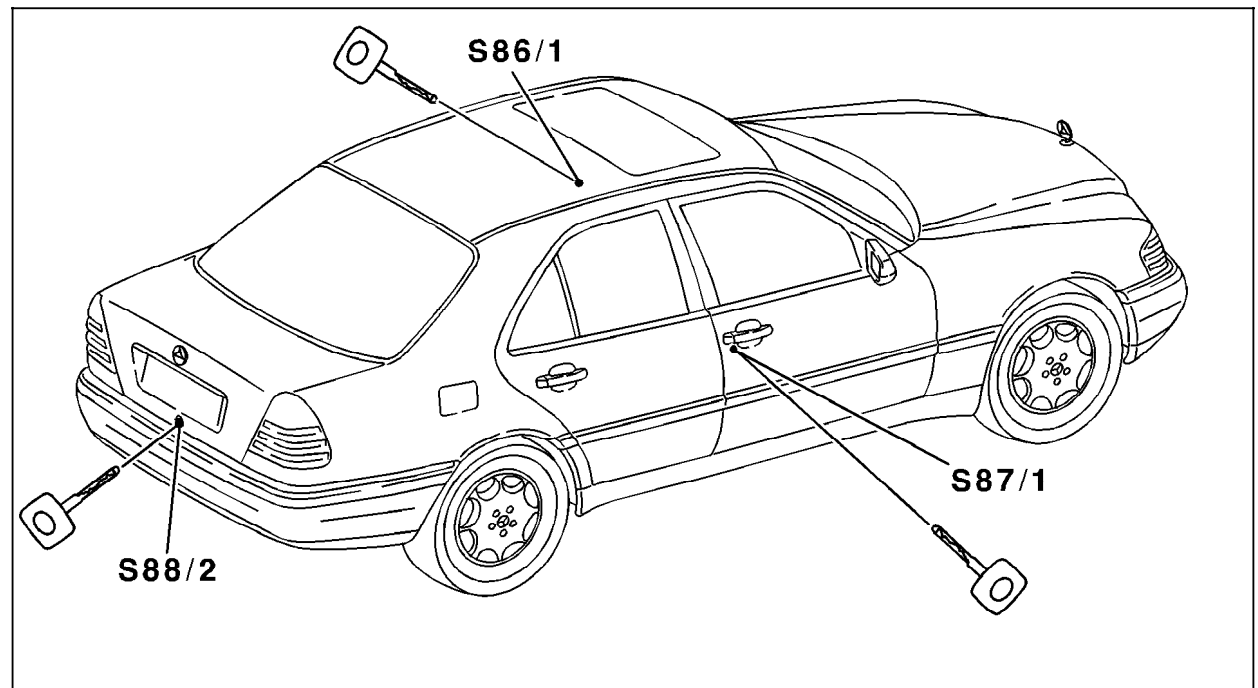


Figure 1

- S86/1 Left front door lock switch
- S87/1 Right front door lock switch
- S88/2 Trunk lid lock switch

P80-5180-55

Diagnosis – Function Test (PSE)

Component Locations

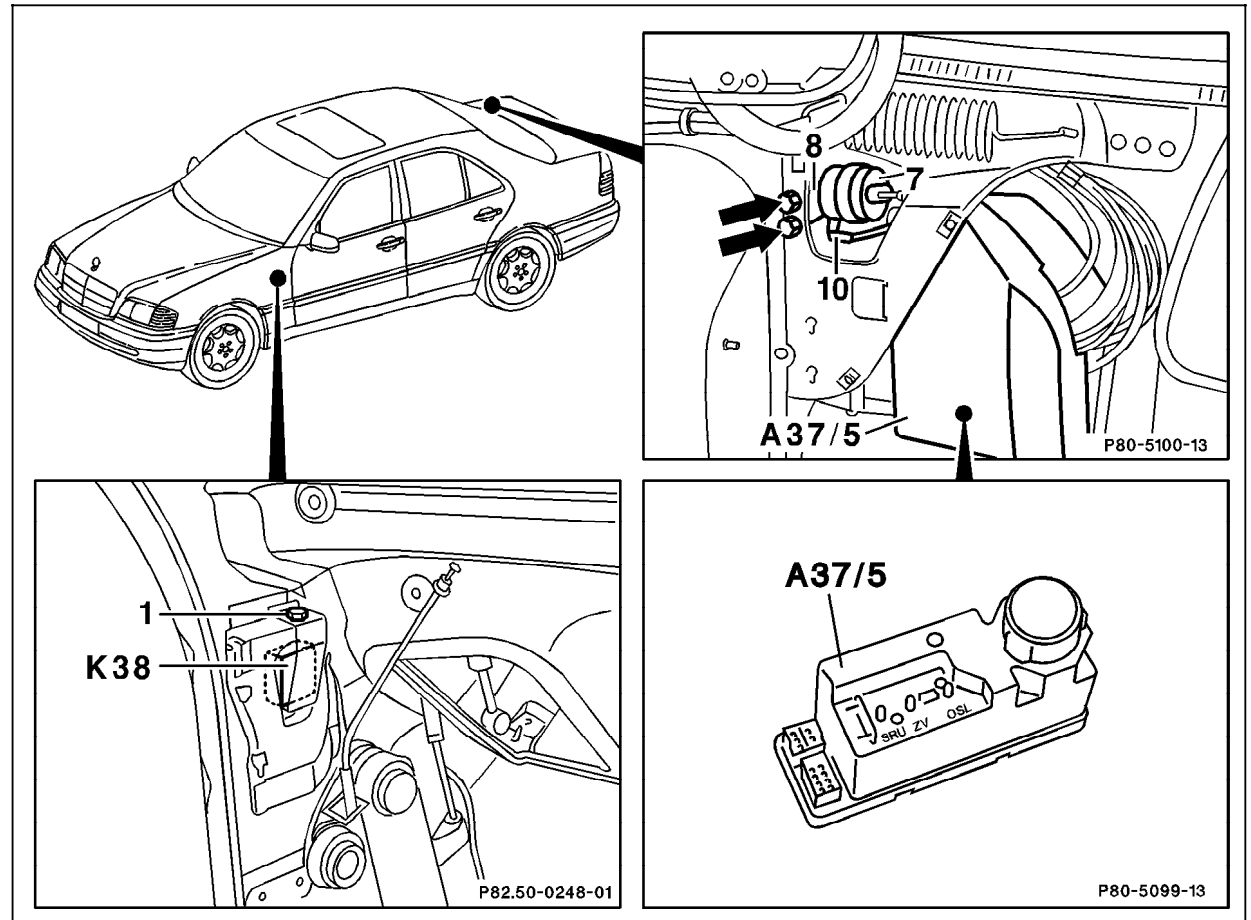


Figure 2

- A37/5 PSE control module (CL, MVA, OSB)
- K38 Starter lock-out relay module (vehicles as of 01/94 only)

P80-5179-57

Diagnosis – Function Test (PSE)

Preparation for Function Test

1. **Model 202 up to 11/94:** Check fuses F3–33 and F3–35 ok,
2. **Model 202 as of 12/94:** Check fuses F1–24 and F1–27 ok,
3. Battery voltage 11 – 14 V.
4. Vehicle unlocked.
5. All doors and trunk lid closed.
6. Left front door window open.

Test step/Test scope	Test condition	Nominal value	Possible cause/Remedy ¹⁾
⇒ 1.0 Activate immobilization (vehicles as of production start up and up to MY 1996 only)	Lock vehicle from one of the three locks. Try to start engine.	Starter motor does not turn. Engine does not start.	23 ⇒ 9.0, Wiring, Starter lock-out relay module (K38).
⇒ 2.0 Deactivate immobilization (vehicles as of production start up and up to MY 1996 only)	Unlock vehicle from one of the three locks. Try to start engine.	Starter motor turns. Engine starts.	23 ⇒ 9.0, Wiring, Circuit 15, Circuit 50, Starter lock-out relay module (K38), Ignition/starter switch (S2/1), Starter (M1).

1) Observe Preparation for Test, see 22.