

Pneumatic Test Program – Component Locations (MVA)

Gasoline Vehicle Component Locations

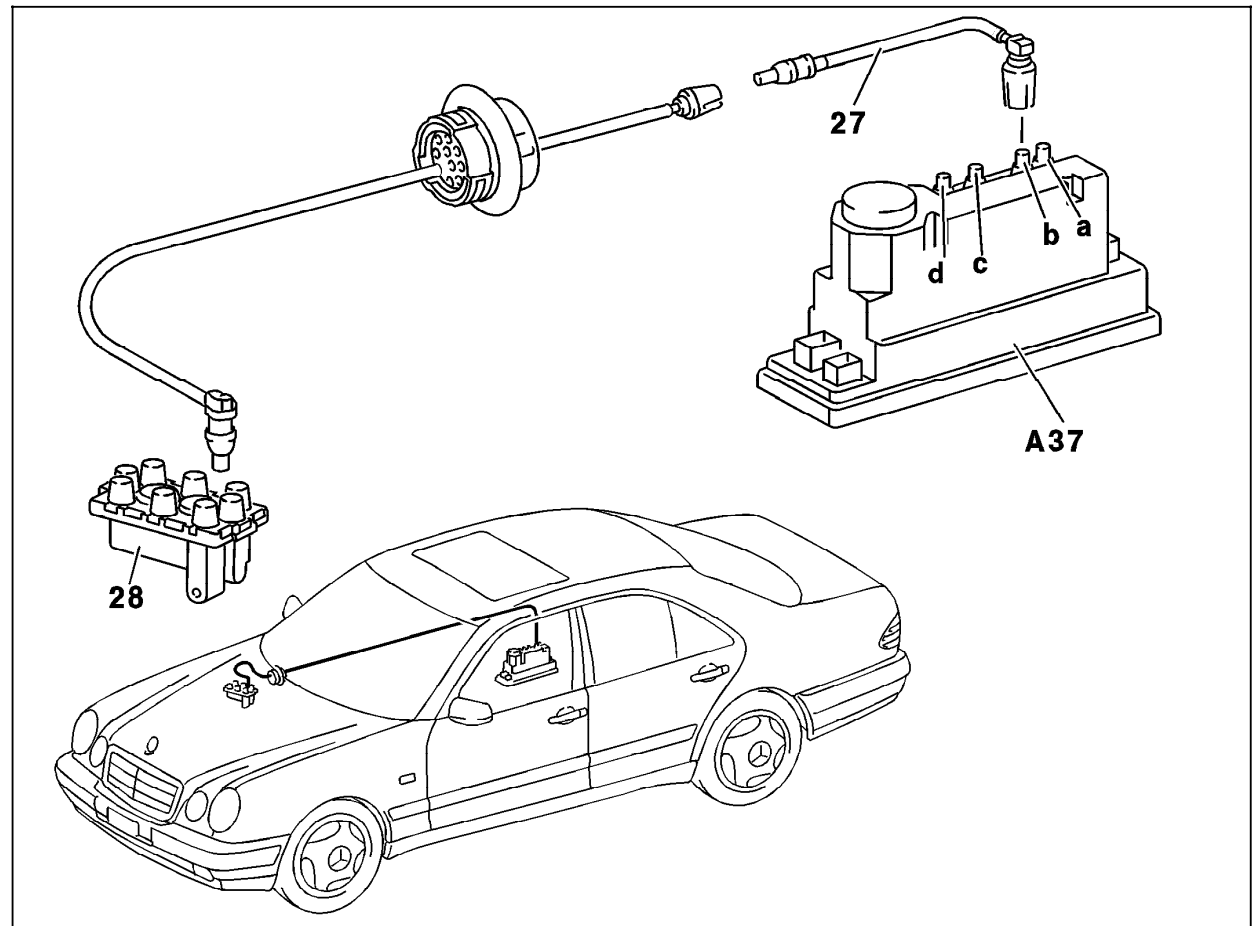


Figure 1

- A37 PSE control module, combined functions
- a Pneumatic connection OSB
- b Pneumatic connection MVA
- c Pneumatic connection CL, RTR
- d Pneumatic connection RHR
- 27 Pneumatic line, MVA (color code: transparent)
- 28 Vacuum distributor

P80.20-0217-06

Pneumatic Test Program – Component Locations (MVA)

Diesel Vehicle Component Locations

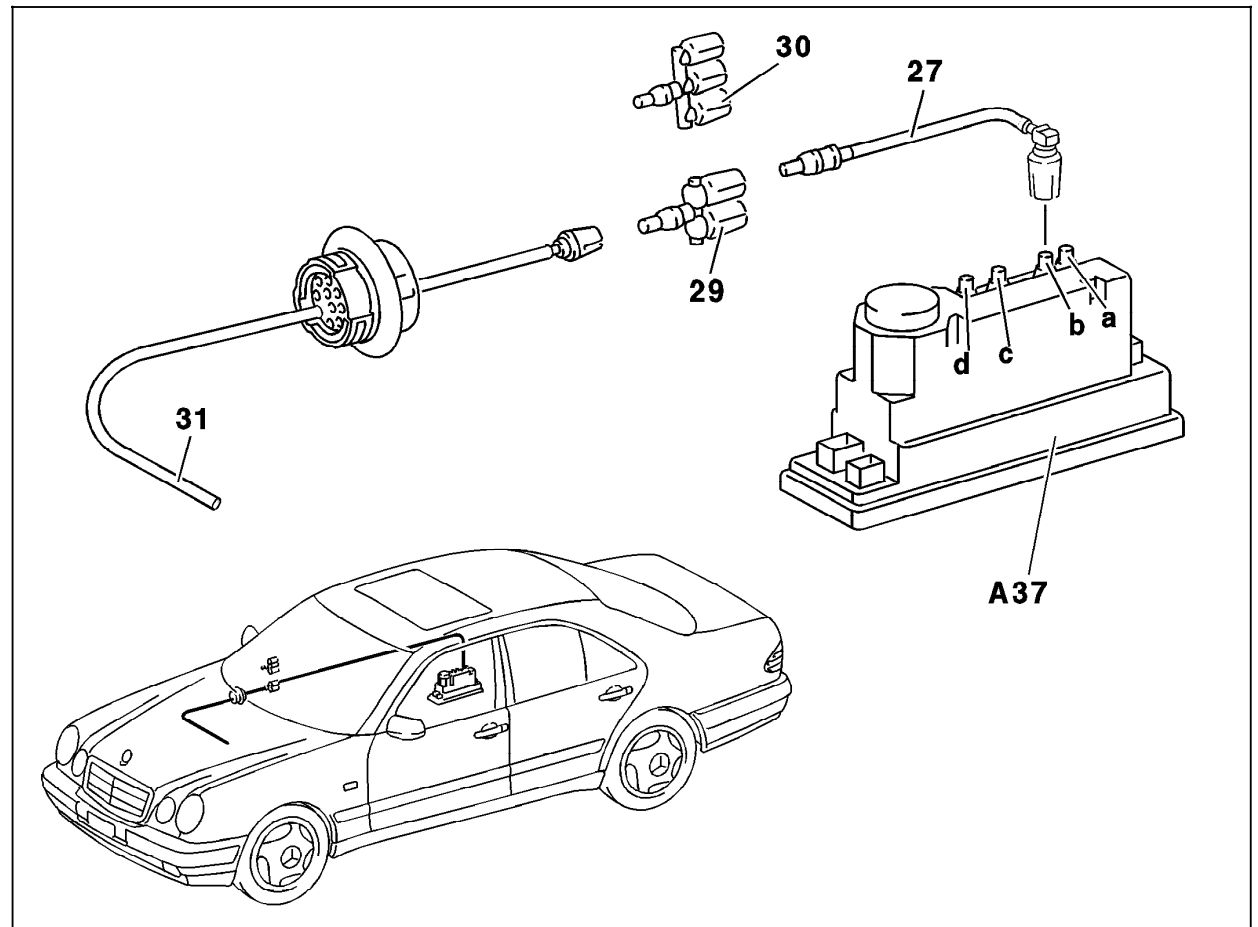


Figure 2

- A37 PSE control module, combined functions
- a Pneumatic connection OSB
- b Pneumatic connection MVA
- c Pneumatic connection CL, RTR
- d Pneumatic connection RHR
- 27 Pneumatic line, MVA (color code: transparent)
- 29/30 Vacuum distributor
- 31 Pneumatic line (connection at manifold, color code: gray)

P80.20-0216-06