

Electrical Test Program – Location of Components (CL)

Model 202, 208  
(model 202 shown)  
(for balance of components  
see Figures 2 and 3)

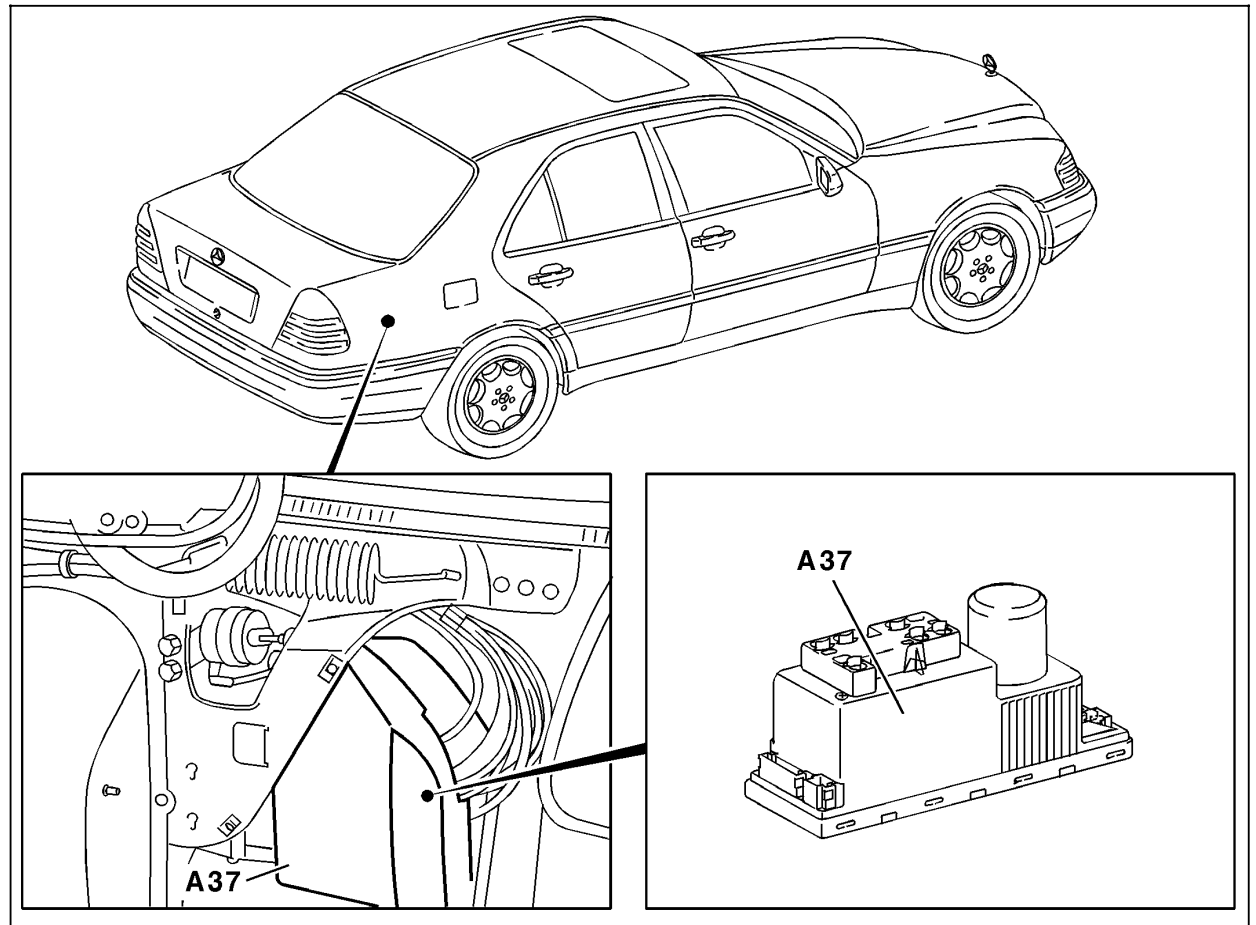


Figure 1

A37 PSE control module, combined functions

P80.20-0365-06

Electrical Test Program – Location of Components (CL)

Model 210  
(Model 210 sedan shown)

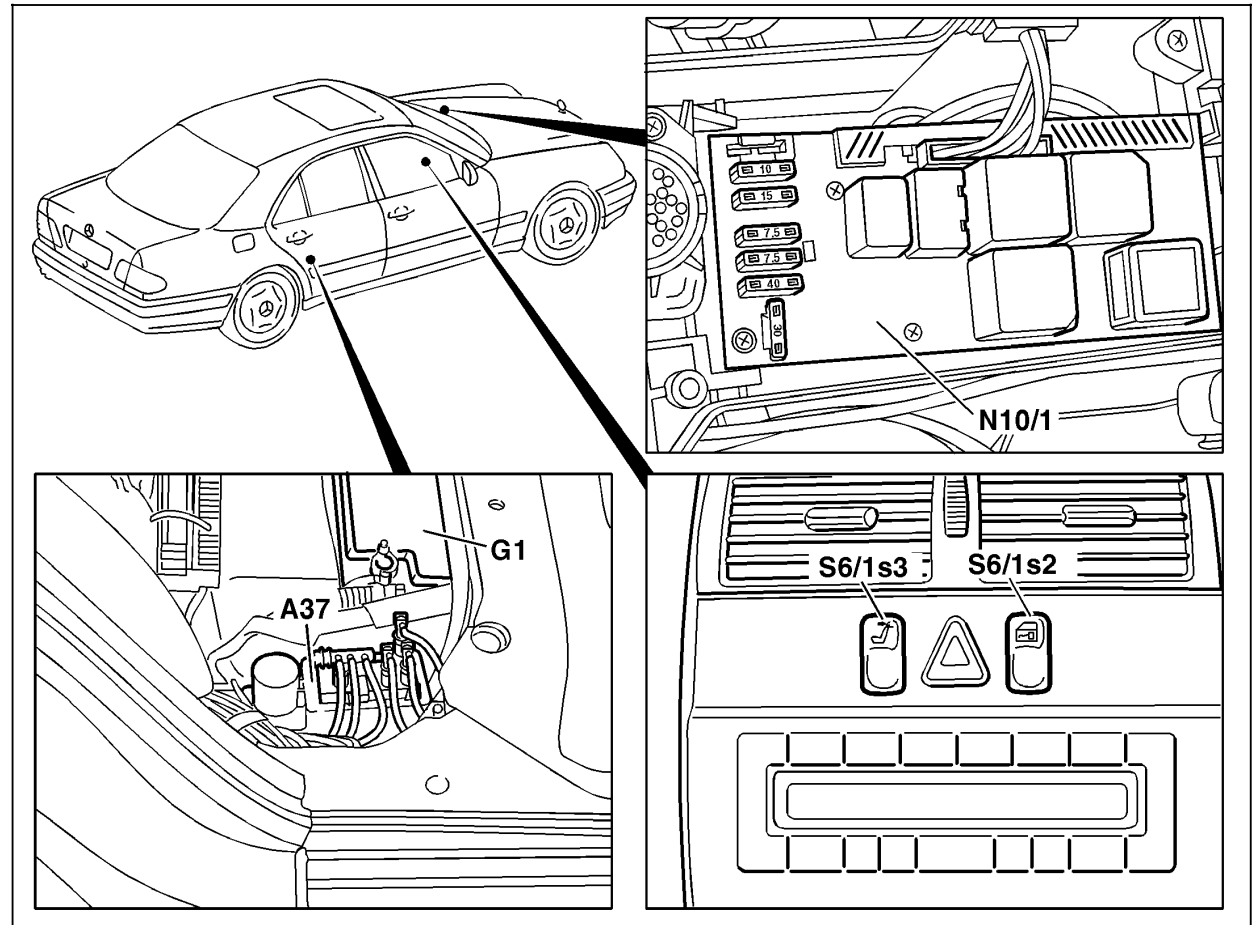


Figure 2

- A37 PSE control module, combined functions
- G1 Battery
- N10/1 Signal pick-up and activation module (SAM) left front
- S6/1s2 Interior switch (CL)
- S6/1s3 RHR unlocking switch

P80.20-0371-06

#### Electrical Test Program – Location of Components (CL)

Model 210  
(Model 210 sedan shown)

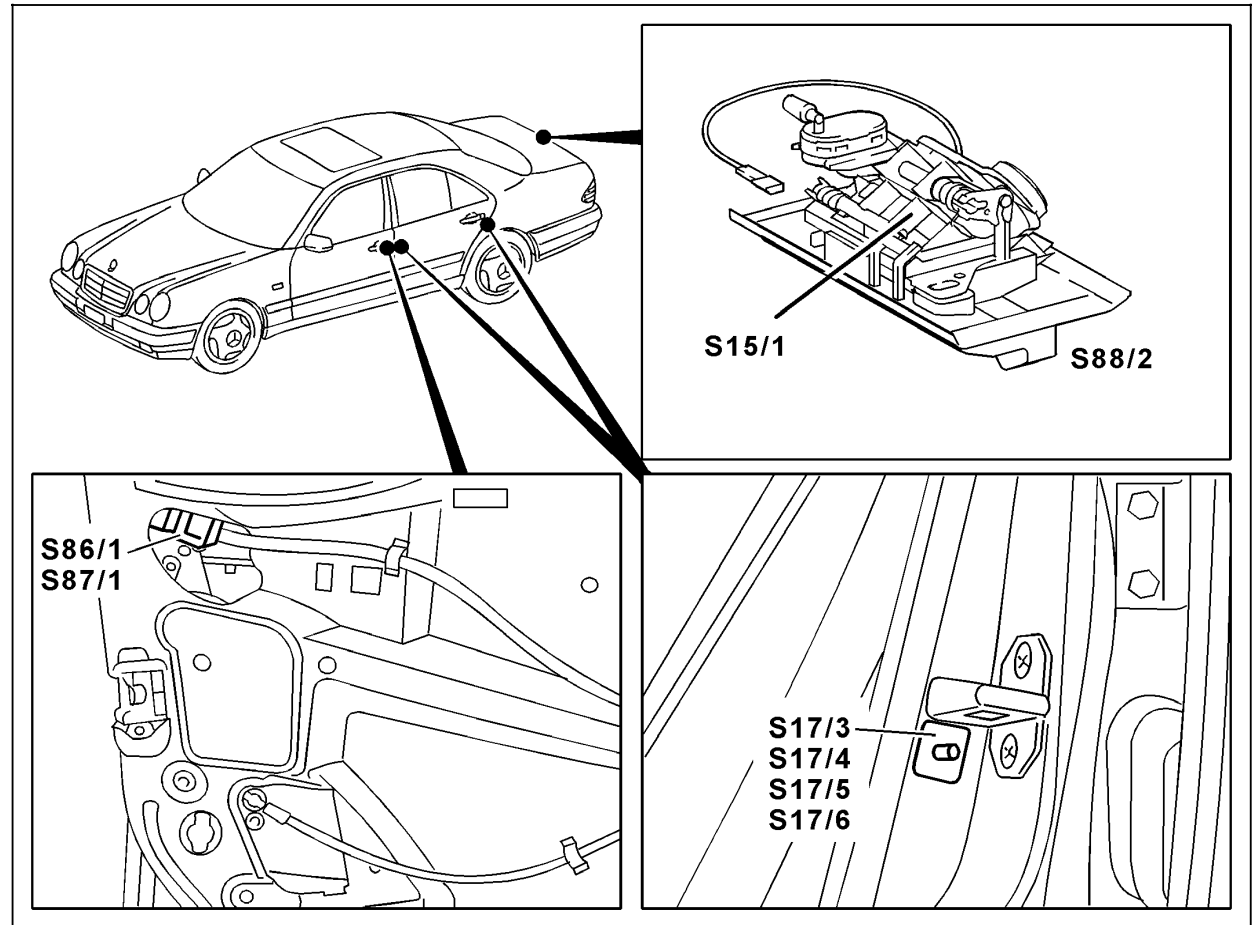


Figure 3

- S15/1 Trunk release switch
- S17/3 Left front door switch
- S17/4 Right front door switch
- S17/5 Left rear door switch
- S17/6 Right rear door switch
- S86/1 Left front door lock switch (CF) (only USA J)
- S87/1 Right front door lock switch (CF) (only USA J)
- S88/2 Trunk lid lock switch (CF) (only USA J)

P80.20-0382-06