

## 1.3 Headlamp Range Adjustment (HRA)

Models 129, 140

### Electrical Test Program – Component Locations

#### Model 129 without ADS

#### Headlamp Range Adjustment

**Note:**

When equipped with ADS the front axle and rear axle level sensors (B22/2, B22/3) perform the same function as the front and rear axle sensors (A52 and A51).

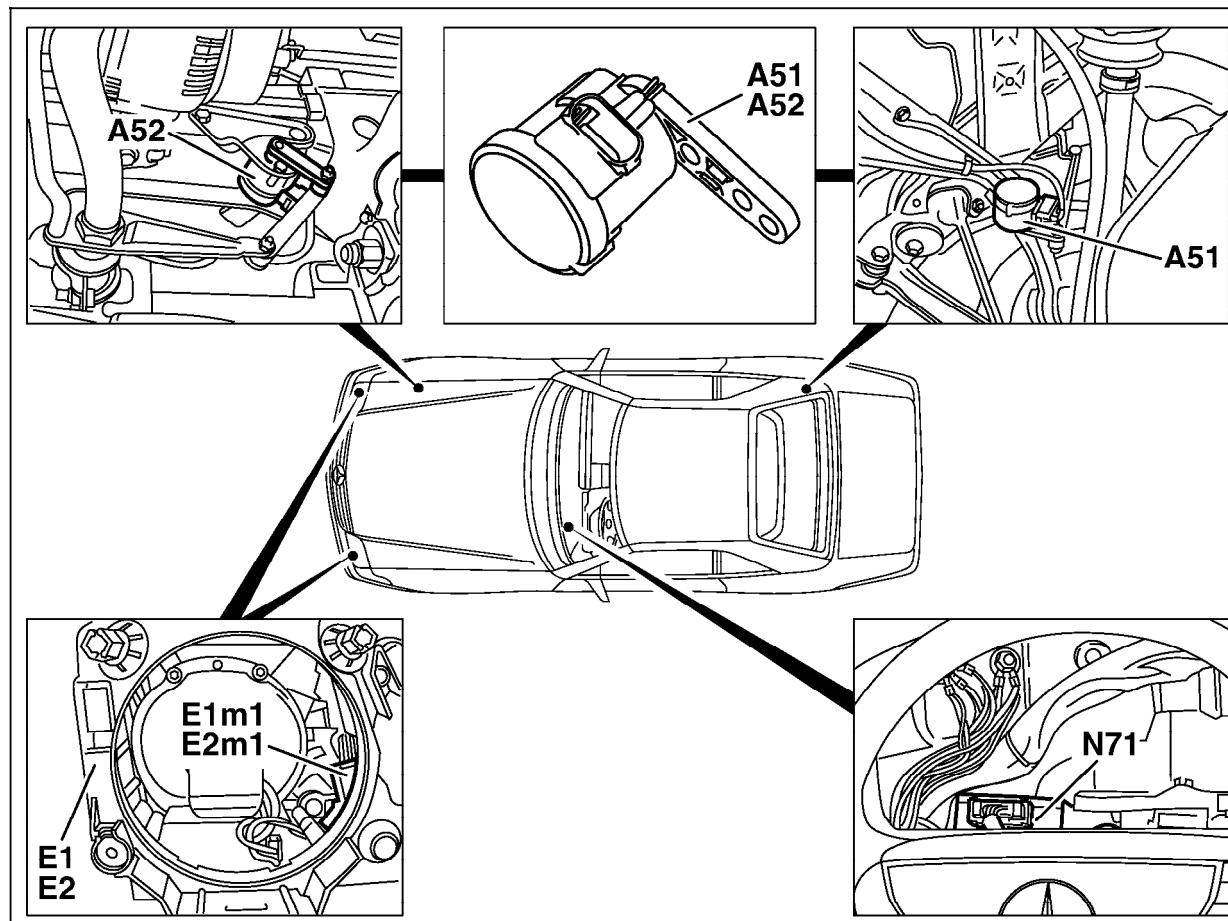


Figure 1

- |      |   |
|------|---|
| A51  | Rear axle sensor (headlamp range adjustment)  |
| A52  | Front axle sensor (headlamp range adjustment) |
| E1   | Left headlamp unit                            |
| E1m1 | Headlamp range adjustment motor               |
| E2   | Right headlamp unit                           |
| E2m1 | Headlamp range adjustment motor               |
| N71  | Headlamp range adjustment control module      |

P82.10-0295-57

## 1.3 Headlamp Range Adjustment (HRA)

Models 129, 140

### Electrical Test Program – Component Locations

Model 140

Headlamp Range Adjustment

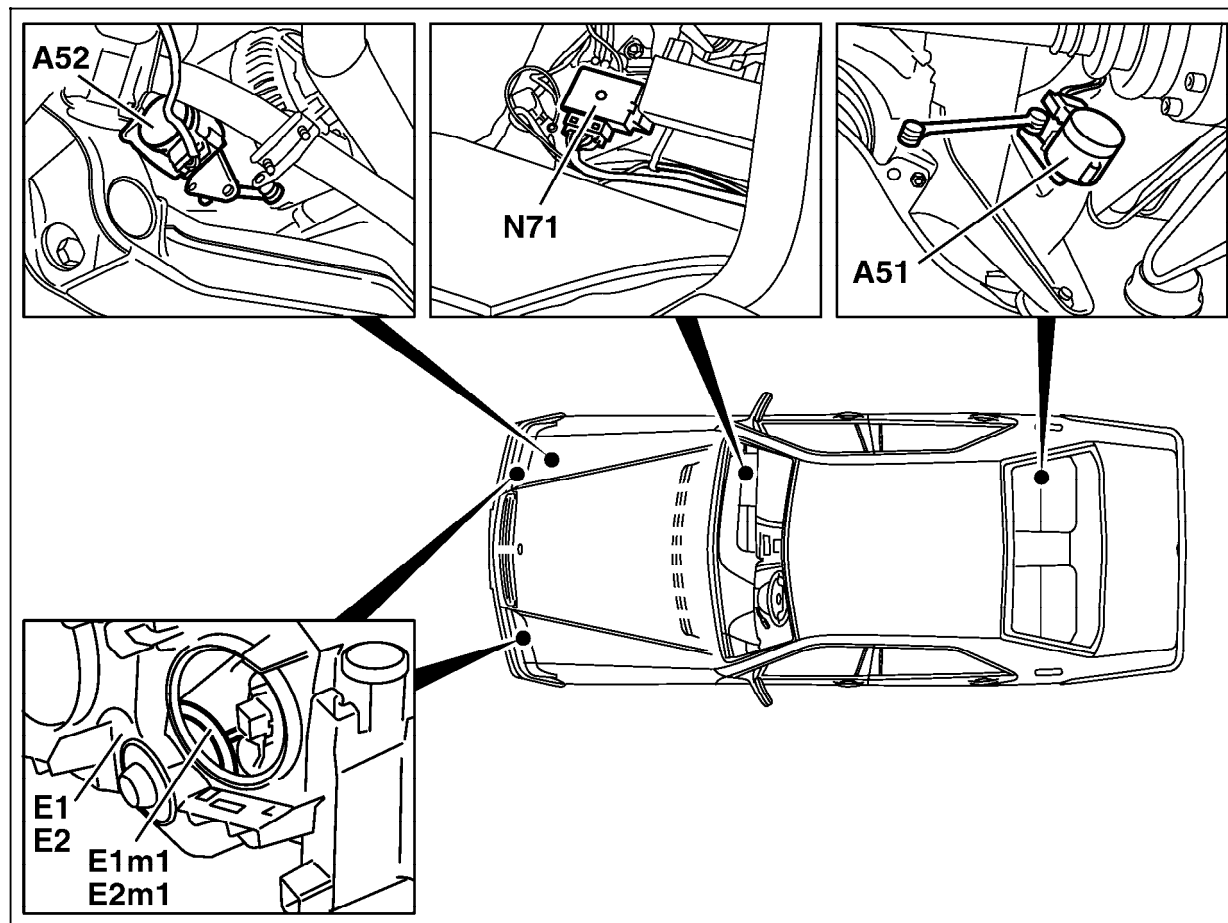


Figure 2

- A51 Rear axle sensor (headlamp range adjustment)
- A52 Front axle sensor (headlamp range adjustment)
- E1 Left headlamp unit
- E1m1 Headlamp range adjustment motor
- E2 Right headlamp unit
- E2m1 Headlamp range adjustment motor
- N71 Headlamp range adjustment control module

P82.10-0399-57