

Diagnosis – Function Test

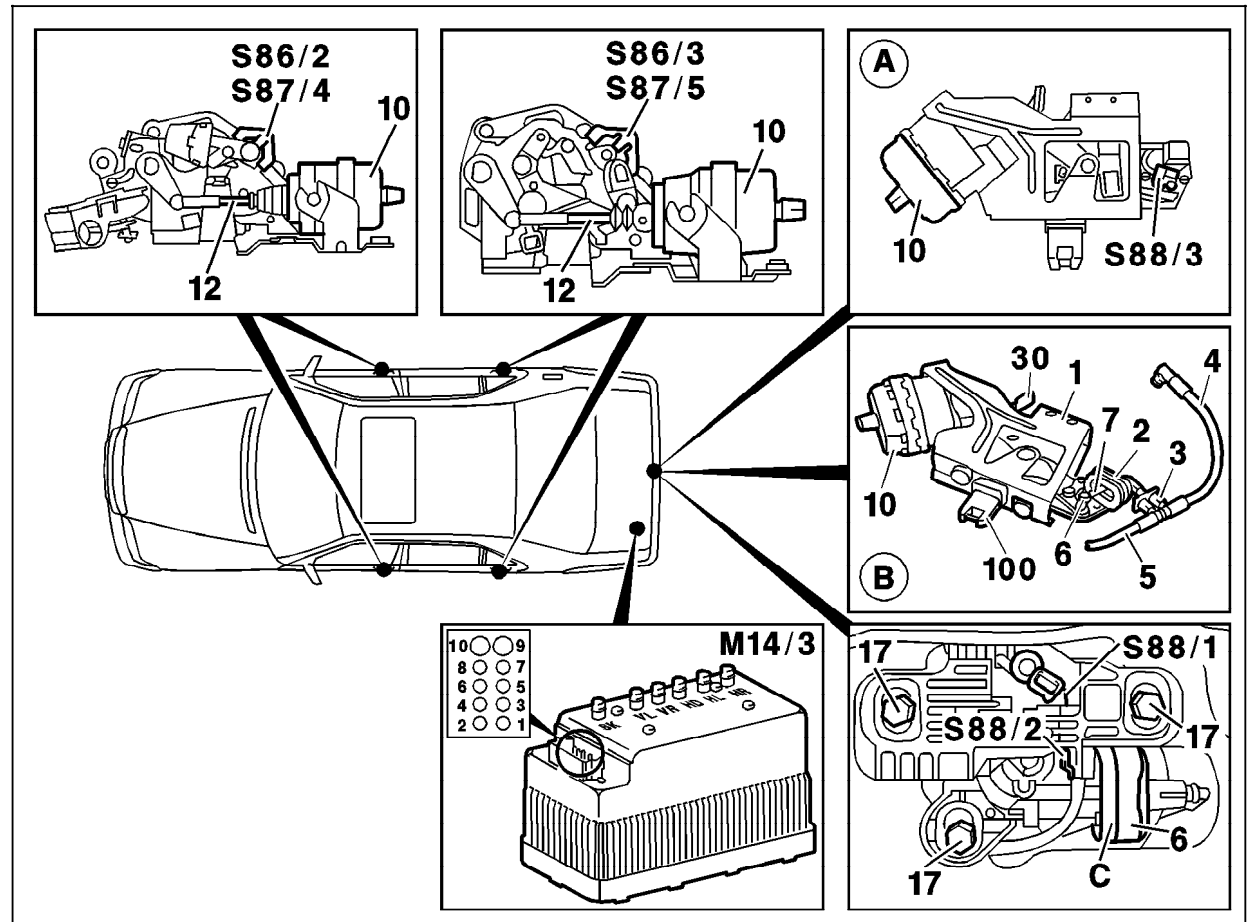


Figure 1

- A Version up to chassis end no. 118120
- B Version as of chassis end no. 118121
- M14/3 CA supply pump
- S86/2 Left front door closing assist microswitch
- S86/3 Left rear door closing assist microswitch
- S87/4 Right front door closing assist microswitch
- S87/5 Right rear door closing assist microswitch
- S88/1 Rotary tumbler/trunk lid microswitch
- S88/3 Trunk lid closing assist microswitch ¹⁾

¹⁾ No longer installed as of chassis end no. 118121.

P72-5363-57

Diagnosis – Function Test

Test step/Test scope	Test condition	Nominal value	Possible cause/Remedy ¹⁾
⇒ 1 Left front door closing assist	Close left front door to initial latch position. Press inward to second detent.	Left front door closes automatically.	23 ⇒ 3.0 33 ⇒ 1.0 – 3.0
⇒ 2 Right front door closing assist	Close right front door to initial latch position. Press inward to second detent.	Right front door closes automatically.	23 ⇒ 4.0 33 ⇒ 4.0 – 6.0
⇒ 3 Left rear door closing assist	Close left rear door to initial latch position. Press inward to second detent.	Left rear door closes automatically.	23 ⇒ 5.0 33 ⇒ 7.0 – 9.0
⇒ 4 Right rear door closing assist	Close right rear door to initial latch position. Press inward to second detent.	Right rear door closes automatically.	23 ⇒ 6.0 33 ⇒ 10.0 – 12.0
⇒ 5 Trunk lid closing assist	Close trunk lid with normal effort.	Trunk lid closes automatically.	23 ⇒ 7.0, 8.0 33 ⇒ 13.0 – 15.0

1) Observe Preparation for Test, see 22.

Note:

If one or more cycles of the closing assist supply pump are switched off by the safety feature (because of incorrect switch signals), the pump can be reset by briefly interrupting circuit 30. This can be done by removing fuse f9 in rear fuse box F4 for approx. 5 seconds, or by disconnecting the connector from the supply pump (M14/3). The pump should be reset before and after the function test (see 22/1, "Notes").