

Electrical Test Program – Connection of Components

Model 210.072

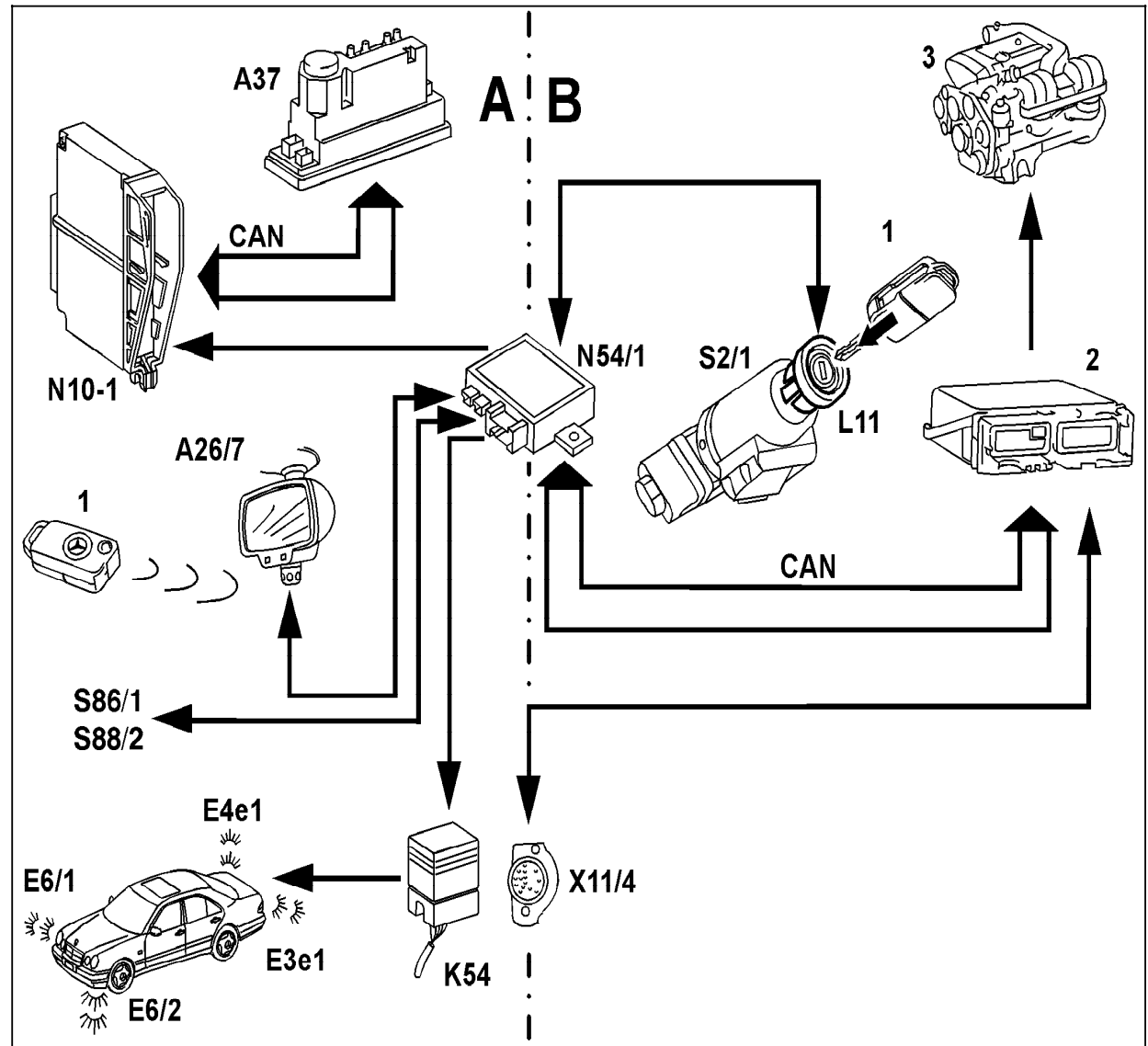


Figure 1

- A Infrared remote central locking (RCL), (entry authorization)
- B Drive authorization system 2a (activation of motor electronics via transponder)
- A26/7 RCL receiver (interior rearview mirror)
- A37 PSE control module, combined functions
- CAN Control-Area-Network
- E3e1 Turn signal lamp
- E4e1 Turn signal lamp
- E6/1 Left turn signal lamp
- E6/2 Right turn signal lamp
- K54 Locking cofirmation relay module
- L11 Coil for transponder
- N10-1 Combination control module
- N54/1 IR DAS control module
- S2/1 Ignition/starter switch
- X11/4 Data link connector (DTC readout)
- 1 IR transmitter key
- 2 Engine control module
- 3 Engine

U80.30-0287-06