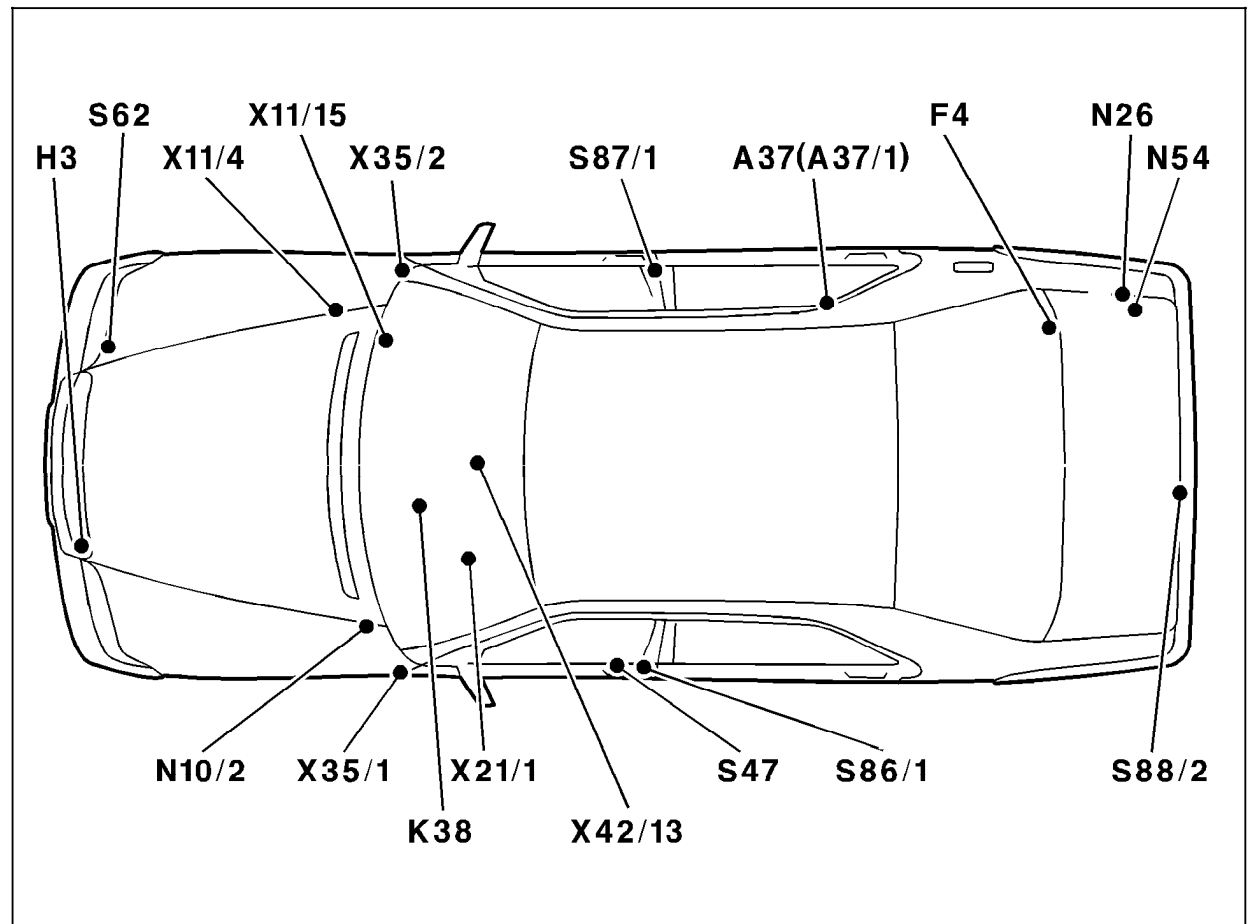


## Electrical Test Program – Component Locations

Up to 05/96

Figure 1

- A37 PSE control module (A37/1)
- F4 Rear fuse box
- H3 Alarm horn
- N10/2 Combination relay module (turn signal, heated rear window, wiper motor, ATA)
- N26 ATA control module
- N54 RCL control module
- S47 Left door actuator
- S62 Hood switch
- S85 Interior CL switch
- S86/1 Left front door lock switch
- S87/1 Right front door lock switch
- S88/2 Trunk lid lock switch
- X11/4 Data link connector
- X11/15 Diagnostic intermediate connector
- X21/1 Terminal block
- X35/1 Left front door separation point
- X35/2 Right front door separation point
- X42/13 ATA contact connector (radio)
- Up to 01/94**
- K38 Starter lock-out relay module



U82-7234-57

Electrical Test Program – Component Locations

As of 06/96

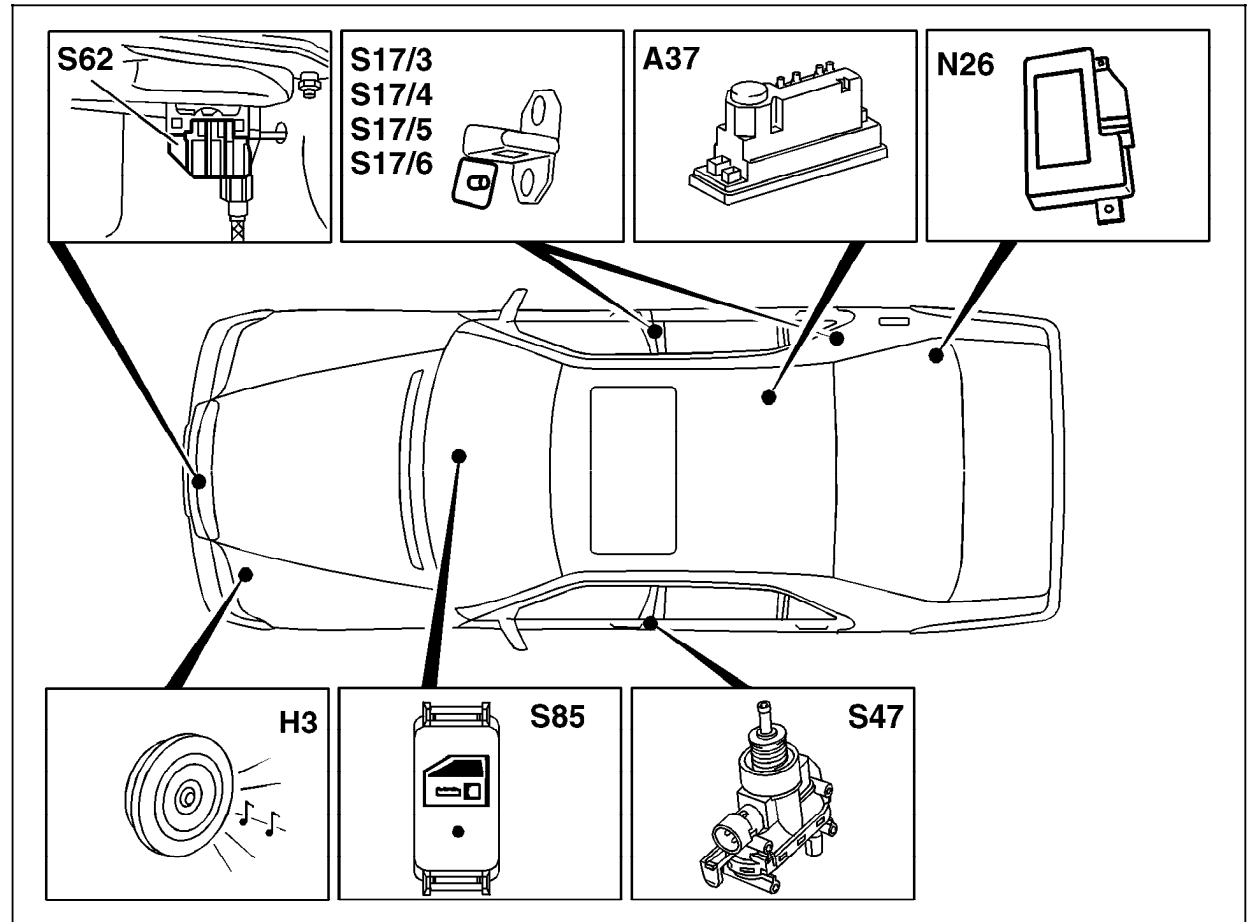
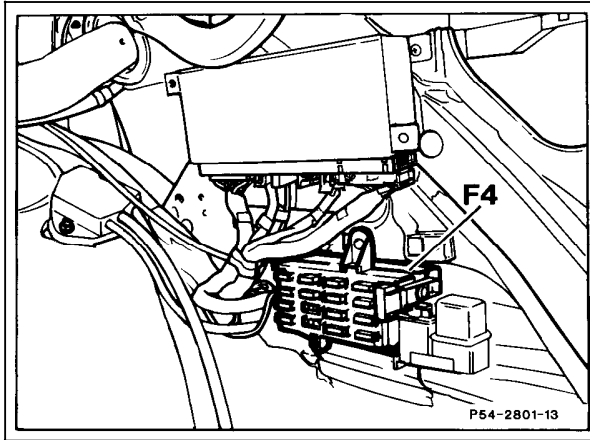


Figure 2

- A37 PSE control module, combined functions
- H3 Alarm horn
- N26 ATA control module
- S17/3 Left front door switch
- S17/4 Right front door switch
- S17/5 Left rear door switch
- S17/6 Right rear door switch
- S47 Left door actuator
- S62 Hood switch
- S85 Interior CL switch

U82.50-0511-57

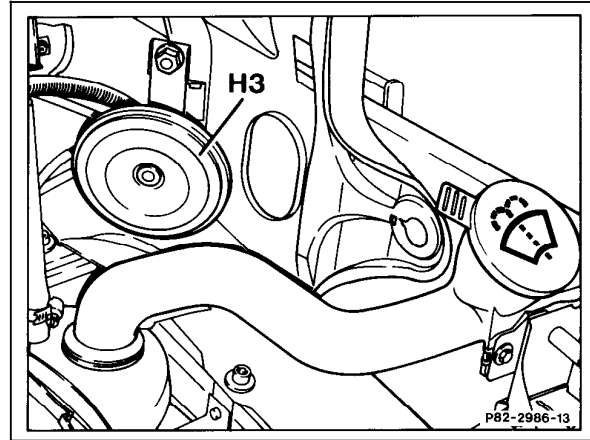
Electrical Test Program – Component Locations



P54-2801-13

Figure 3

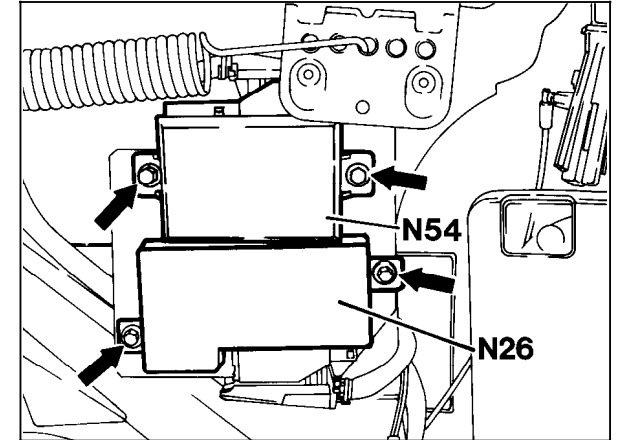
F4 Fuse box in trunk



P82-2986-13

Figure 4

H3 Alarm horn



P80-2214-13

Figure 5

N26 ATA control module  
N54 RCL control module

Electrical Test Program – Component Locations

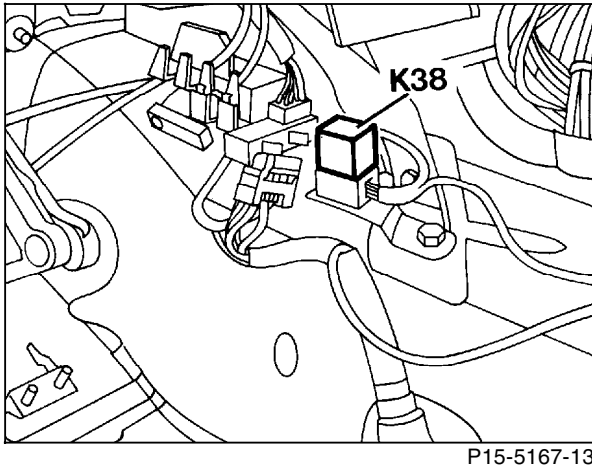


Figure 6  
K38 Starter lock-out relay module

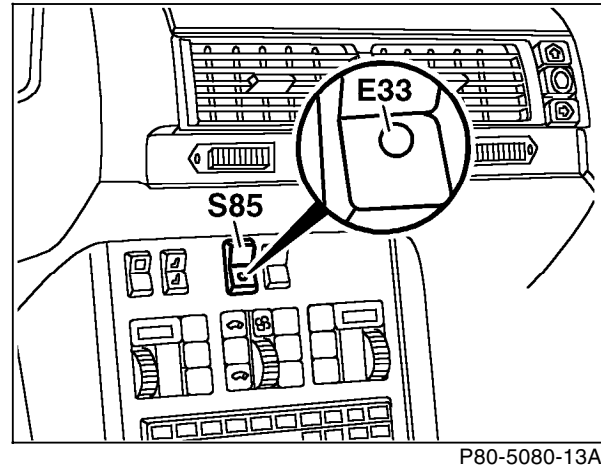


Figure 7  
E33 ATA status indicator  
S85 Interior CL switch