
Electrical Test Program – Connection of Components – This Page Left Blank Intentionally

Electrical Test Program – Connection of Components

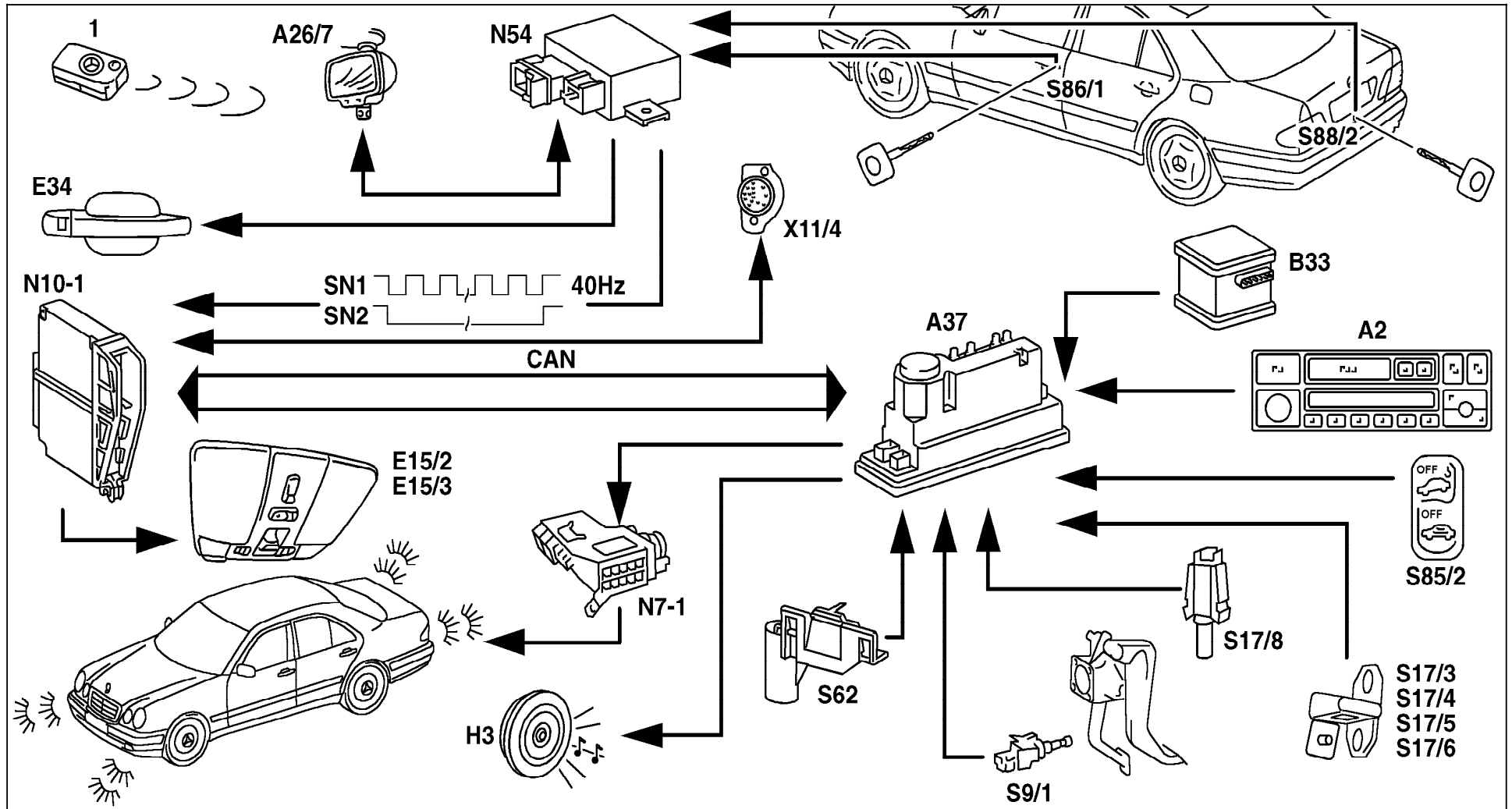


Figure 1

Model 210 M.Y. 1996, E420 M.Y. 1997 up to 06/96 production shown

P82.50-0621-09

Electrical Test Program – Connection of Components

A2	Radio	N54	RCL control module
A26/7	RCL receiver (interior rearview mirror)	S9/1	Stop lamp switch (4-pole)
A37	PSE control module	S17/3	Left front door switch
B33	Non - USA vehicles	S17/4	Right front door switch
E15/2	Front dome lamp (with shut-off delay and front reading lamp)	S17/5	Left rear door switch
E15/3	Rear dome lamp	S17/6	Right rear door switch
E34	RCL indicator	S17/8	Trunk lamp switch
H3	Alarm horn	S62	Engine hood switch (ATA)
N7-1	Illumination control module	S85/2	Non - USA vehicles
N10-1	Combination control module (convenience feature [CF], wiper system, heated rear window, control module box fan)	S86/1	Left front door lock switch (CF)
		S88/2	Trunk lid lock switch (CF)
		X11/4	Data link connector (DTC readout)
		SN1	Lock switch circuit 1
		SN2	Lock switch circuit 2
		1	IR transmitter key

Electrical Test Program – Connection of Components (model 210 as of M.Y. 1997)
(E420 as of 06/96 production)

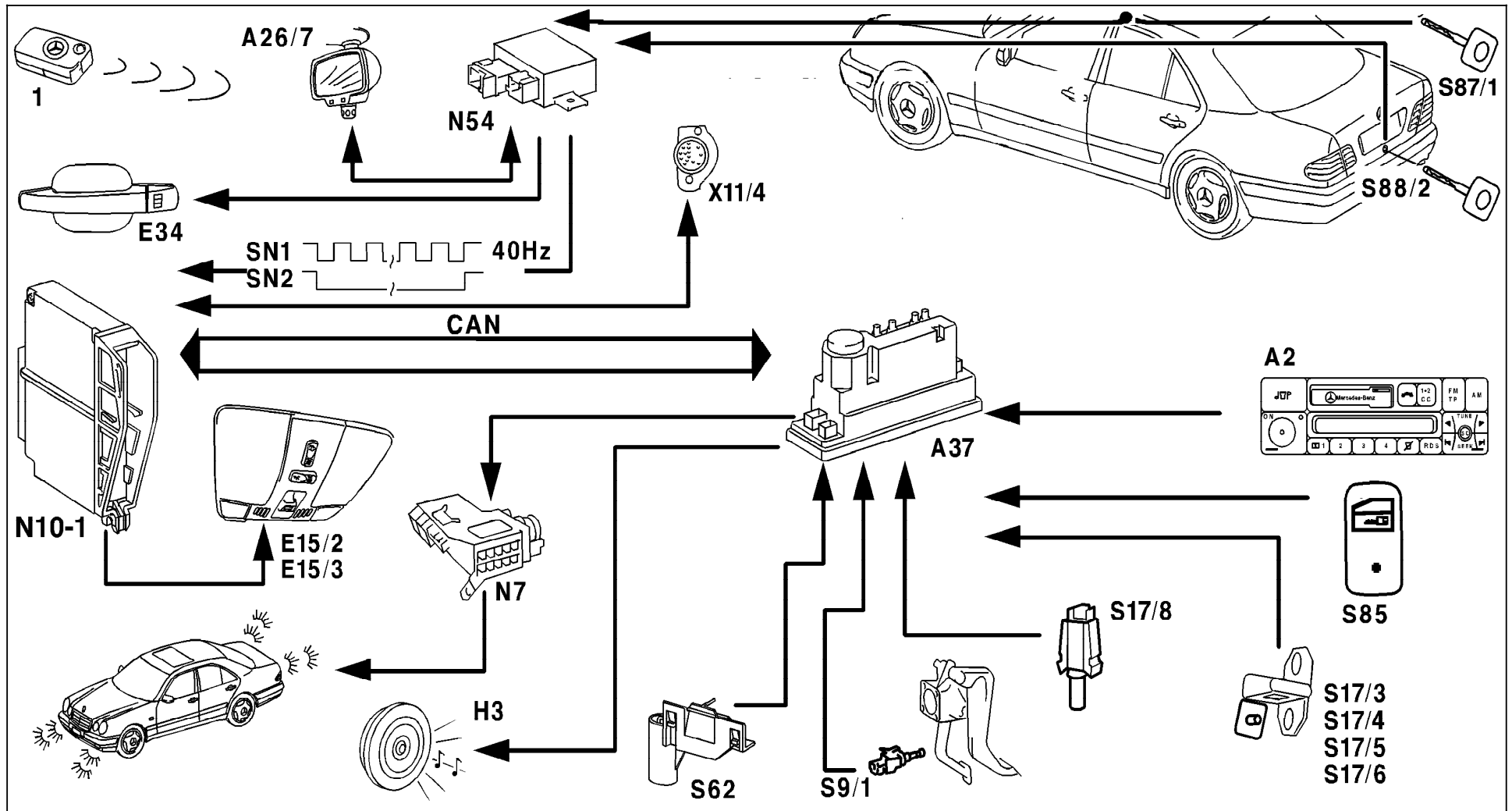


Figure 3
Model 210 M.Y. 1997, E420 as of 06/96 production shown

U82.50-0266-09a

Electrical Test Program – Connection of Components

A2	Radio	N54	RCL control module
A26/7	RCL receiver (interior rearview mirror)	S9/1	Stop lamp switch (4-pole)
A37	PSE control module	S17/3	Left front door switch
E15/2	Front dome lamp (with shut-off delay and front reading lamp)	S17/4	Right front door switch
E15/3	Rear dome lamp	S17/5	Left rear door switch
E34	RCL indicator	S17/6	Right rear door switch
H3	Alarm horn	S17/8	Trunk lamp switch
N7	Exterior lamp failure monitoring module	S62	Engine hood switch (ATA)
N10-1	Combination control module (convenience feature [CF], wiper system, heated rear window, control module box fan)	S85	Interior CL switch
		S87/1	Right front door lock switch (CF)
		S88/2	Trunk lid lock switch (CF)
		X11/4	Data link connector (DTC readout)
		SN1	Lock switch circuit 1
		SN2	Lock switch circuit 2
		1	IR transmitter key