

Electrical Test Program – Component Locations (ATA)

Vehicles up to 05/98

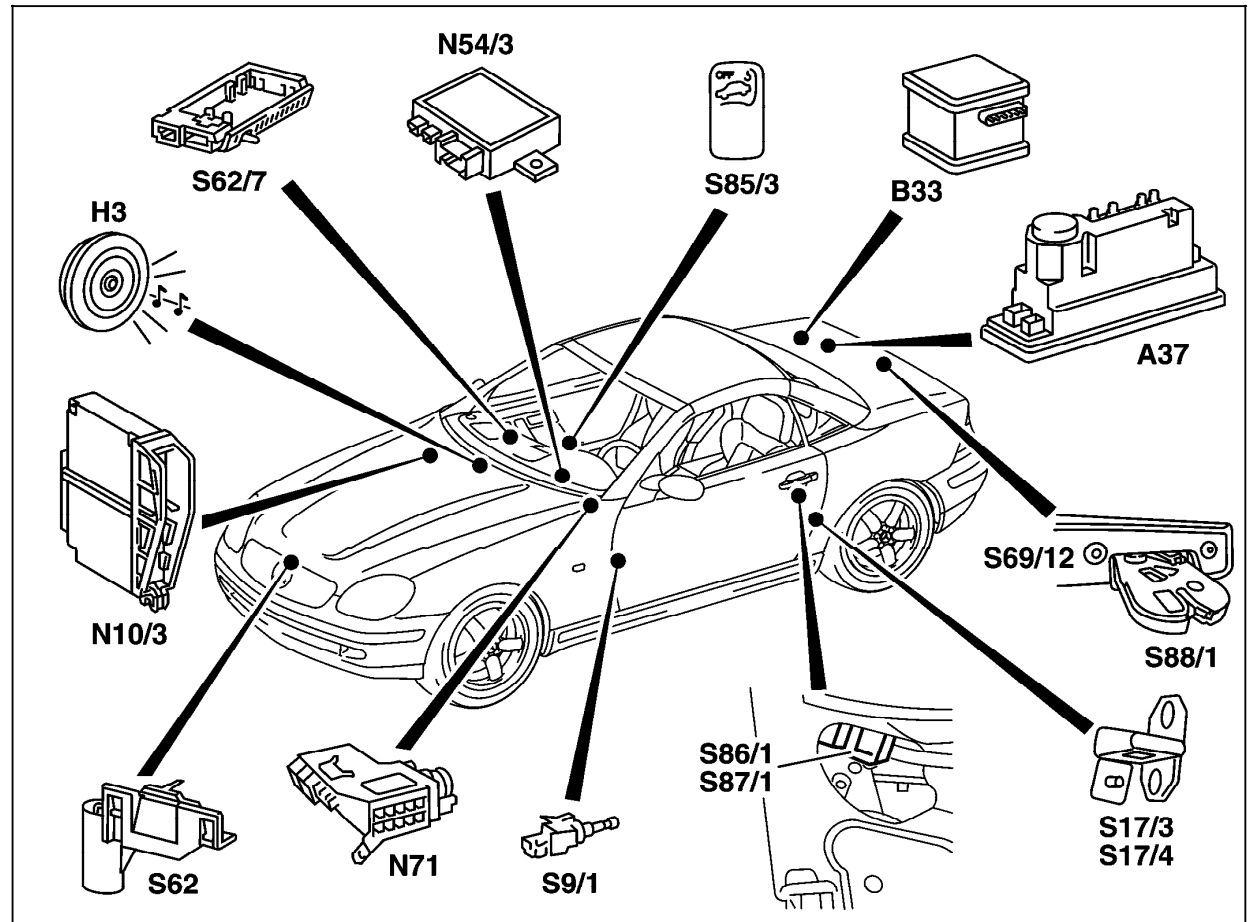


Figure 1

- A37 PSE control module, combined functions
- B33 ATA tow sensor
- H3 Alarm horn
- N7-1 Illumination control module
- N10-3 Combination control module
- N54/3 Radio frequency DAS control module
- S9/1 Stop lamp switch (4-pole)
- S17/3 Left front door switch
- S17/4 Right rear door switch
- S62 Engine hood switch (ATA)
- S62/7 Glove box switch (ATA)
- S69/12 Rotary latch selector switch, trunk lock/trunk illumination
- S85/3 ATA status/towing protection switch
- S86/1 Left front door lock switch (CF) (only USA)
- S87/1 Right front door lock switch (CF) (only USA)
- S88/2 Trunk lid lock switch (CF) (only USA)

P82.50-0623-06

Electrical Test Program – Component Locations (ATA)

Vehicles as of 06/98

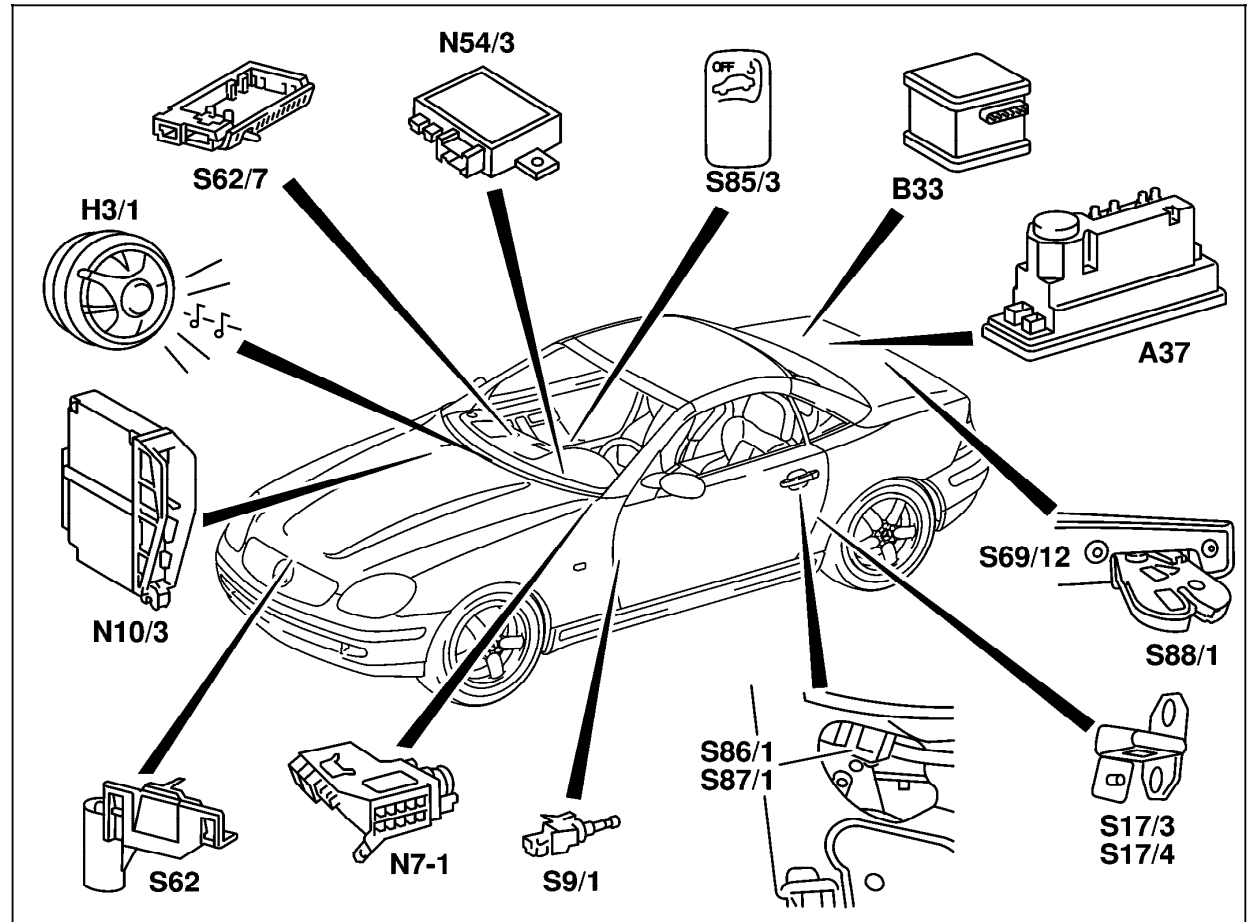


Figure 2

- A37 PSE control module, combined functions
- B33 ATA tow sensor
- H3/1 Alarm siren with auxiliary battery
- N7-1 Illumination control module
- N10-3 Combination control module
- N54/3 Radio frequency DAS control module
- S9/1 Stop lamp switch (4-pole)
- S17/3 Left front door switch
- S17/4 Right rear door switch
- S62 Engine hood switch (ATA)
- S62/7 Glove box switch (ATA)
- S69/12 Rotary latch selector switch, trunk lock/trunk illumination
- S85/3 ATA status/towing protection switch
- S86/1 Left front door lock switch (CF) (only USA)
- S87/1 Right front door lock switch (CF) (only USA)
- S88/2 Trunk lid lock switch (CF) (only USA)

P80.50-2005-06

Electrical Test Program – Component Locations (ATA)

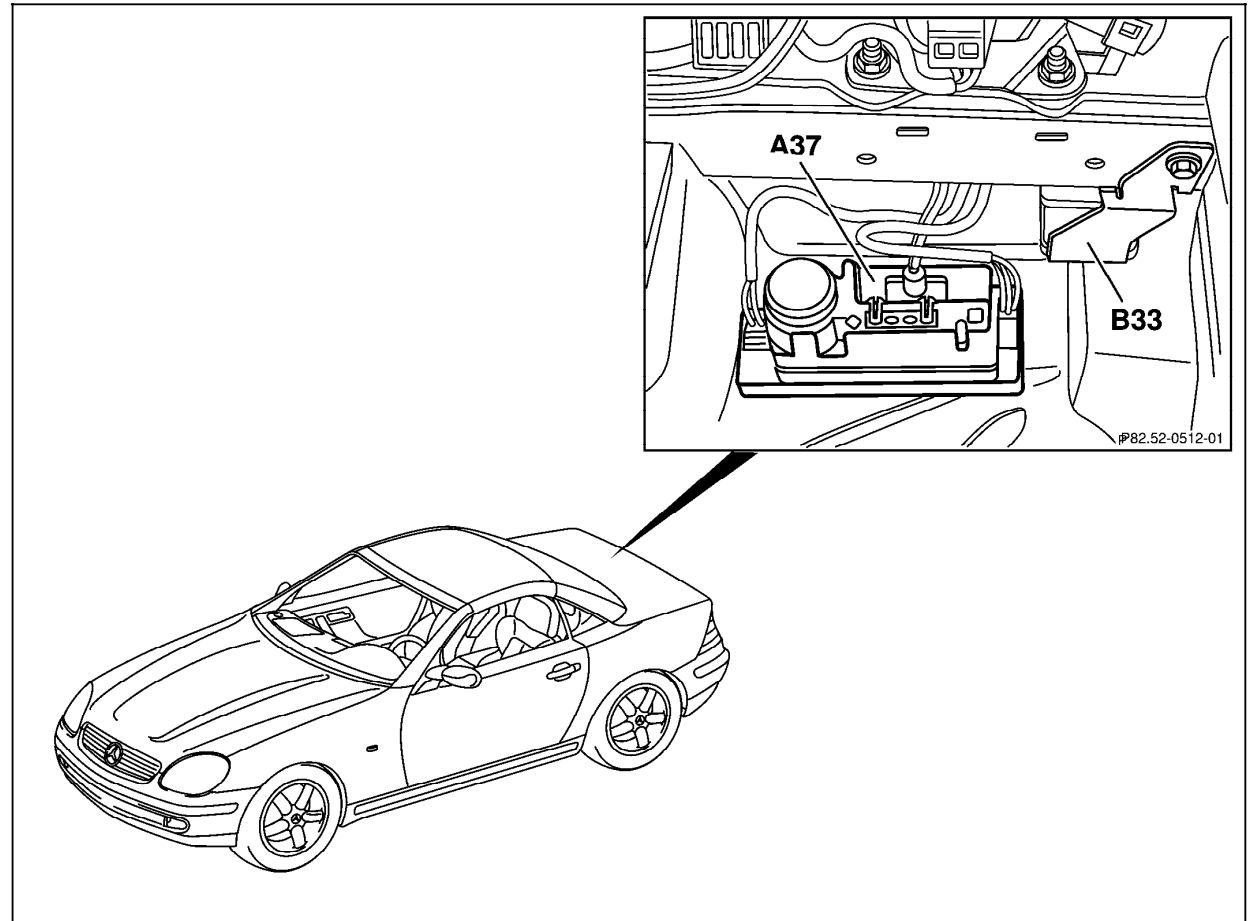


Figure 3

The ATA tow sensor is located to the right of the PSE control module, combined functions (A37), underneath the trim covering for the trunk.

P80.50-2009-06