

## 16.3 Airbag (AB)



Models 129, 140, 170, 202, 208, 210

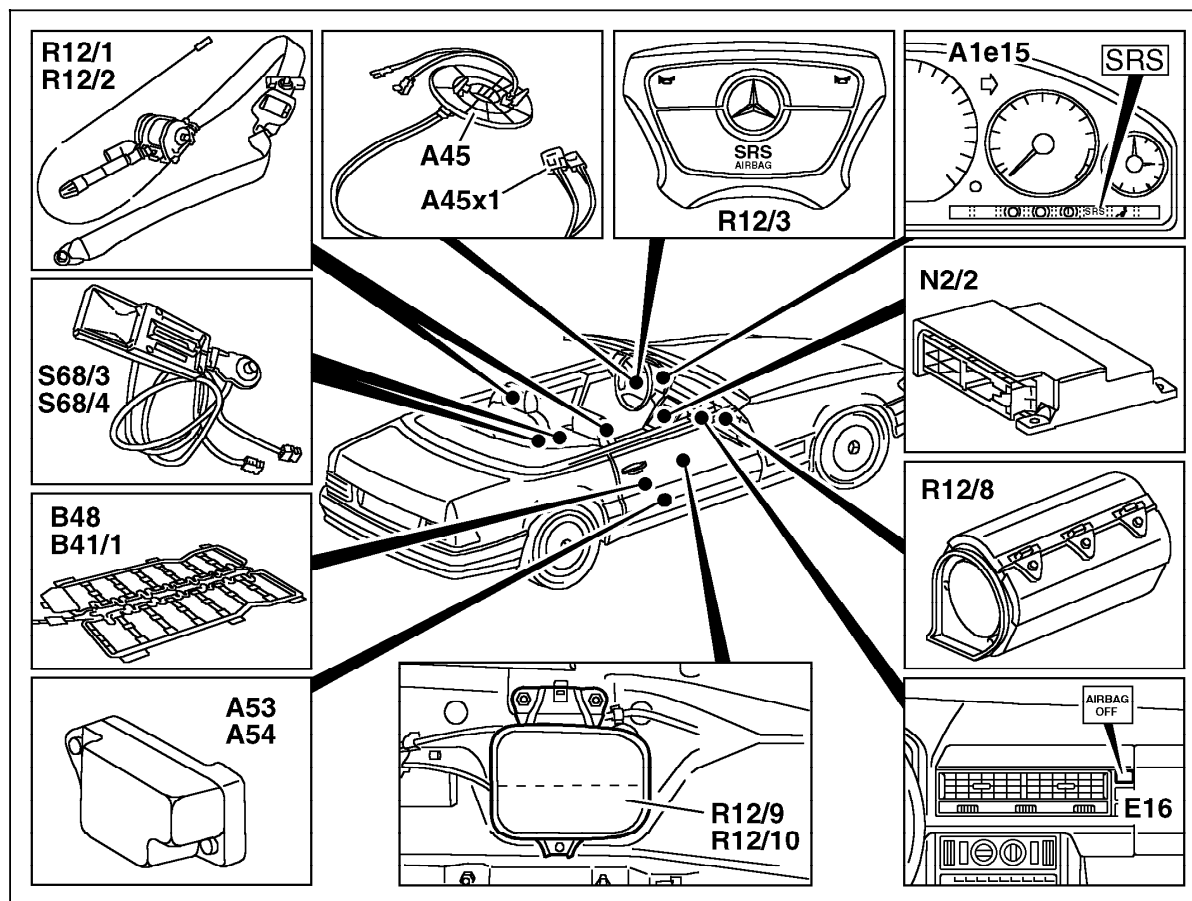
### Electrical Test Program - Component Locations

#### Driver/passenger-side airbag/side airbag

##### Model 129

Figure 1

A1e15	SRS MIL
A45	Horn/airbag clock spring contact
A45x1	Horn/airbag clock spring contact connector
A53	Left side airbag sensor
A54	Right side airbag sensor
B41/1	Front passenger seat occupied recognition sensor
B48	Front passenger seat occupied recognition with automatic child seat recognition (ASCR)
E16	Automatic child seat recognition (ASCR) indicator lamp
N2/2	SRS control module
R12/1	Left front ETR squib
R12/2	Right front ETR squib
R12/3	Driver airbag squib
R12/8	Front passenger airbag squib
R12/9	Left side airbag squib
R12/10	Right side airbag squib
S68/3	Left front seat belt buckle switch (airbag/ETR) 
S68/4	Right front seat belt buckle switch (airbag/ETR) 



P91.60-0495-06

## 16.3 Airbag (AB)



Models 129, 140, 170, 202, 208, 210

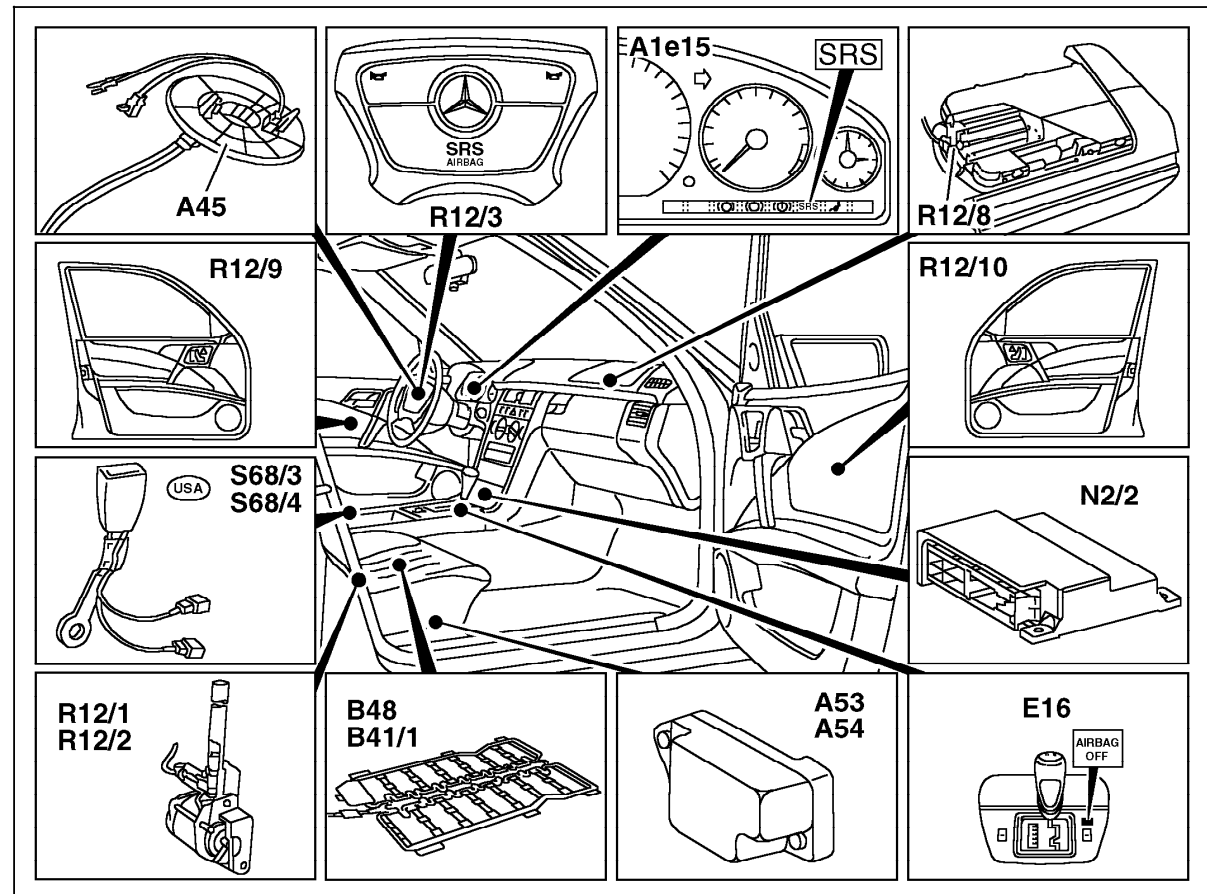
### Electrical Test Program - Component Locations

#### Driver/passenger-side airbag/side airbag

##### Model 140

Figure 2

A1e15	SRS MIL
A45	Horn/airbag clock spring contact
A53	Left side airbag sensor
A54	Right side airbag sensor
B48	Front passenger seat occupied recognition with automatic child seat recognition (ASCR)
E16	Automatic child seat recognition (ASCR) indicator lamp
N2/2	SRS control module
R12/1	Left front ETR squib
R12/2	Right front ETR squib
R12/3	Driver airbag squib
R12/8	Front passenger airbag squib
R12/9	Left side airbag squib
R12/10	Right side airbag squib
S68/3	Left front seat belt buckle switch (airbag/ETR) 
S68/4	Right front seat belt buckle switch (airbag/ETR) 



P91.60-0496-06

## 16.3 Airbag (AB)



Models 129, 140, 170, 202, 208, 210

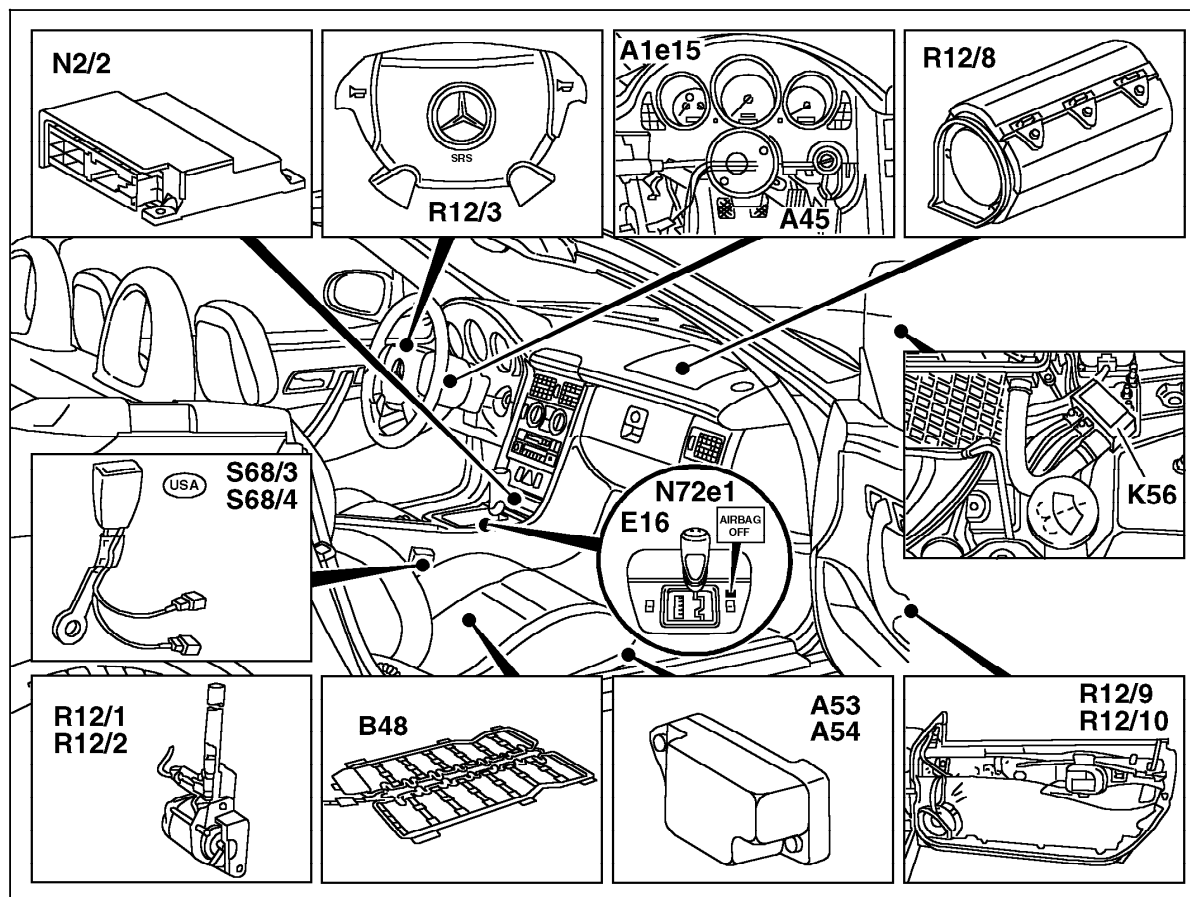
### Electrical Test Program - Component Locations

#### Driver/passenger-side airbag/side airbag

Model 170, 208

Figure 3

A1e15	SRS MIL
A45	Horn/airbag clock spring contact
A53	Left side airbag sensor
A54	Right side airbag sensor
B48	Front passenger seat occupied recognition with automatic child seat recognition (ACSR)
E16	Automatic child seat recognition (ASCR) indicator lamp
K56	Crash separation relay module (generator/battery) (Kompressor model only)
N2/2	SRS control module
N72e1	Automatic child seat recognition warning lamp
R12/1	Left front ETR squib
R12/2	Right front ETR squib
R12/3	Driver airbag squib
R12/8	Front passenger airbag squib
R12/9	Left side airbag squib
R12/10	Right side airbag squib
S68/3	Left front seat belt buckle switch (airbag/ETR) 
S68/4	Right front seat belt buckle switch (airbag/ETR) 



P91.60-0497-06

## 16.3 Airbag (AB)



Models 129, 140, 170, 202, 208, 210

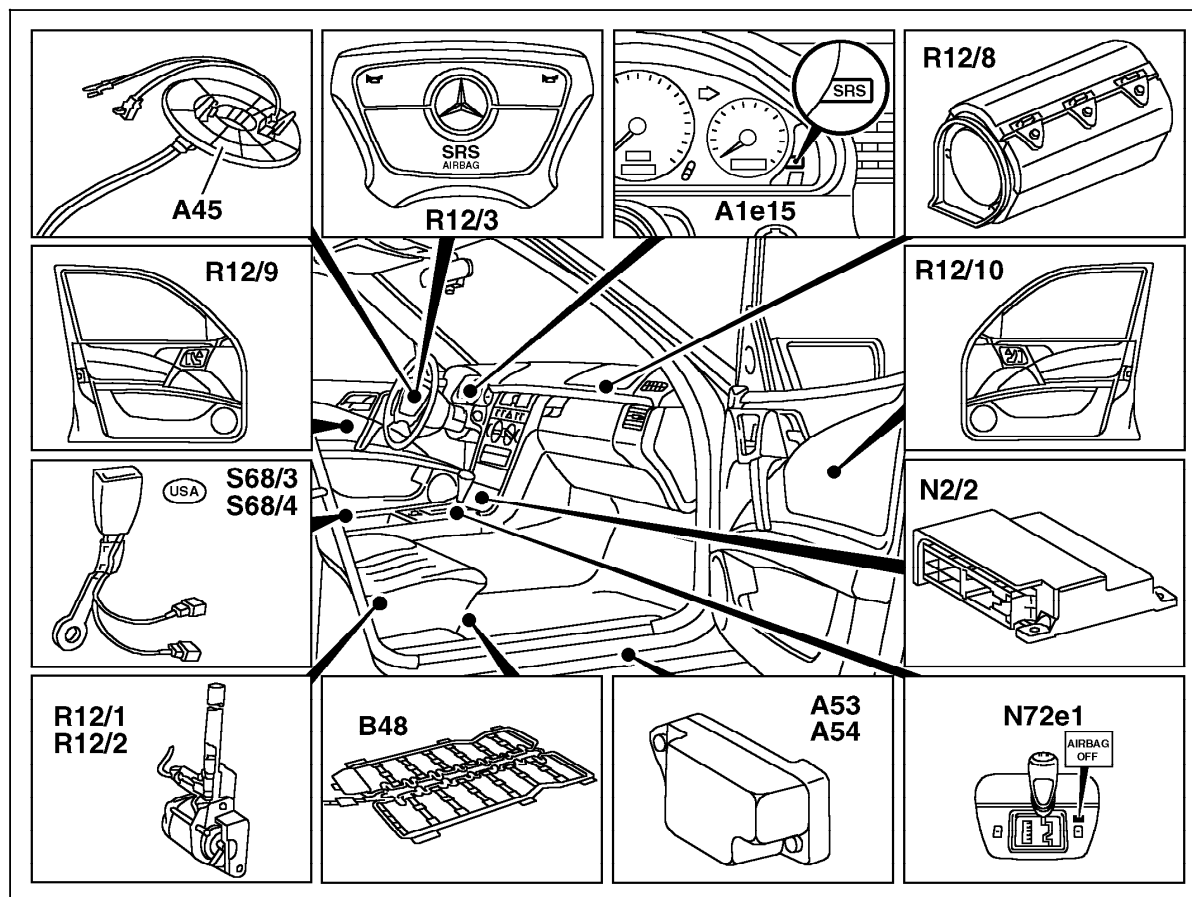
### Electrical Test Program - Component Locations

#### Driver/passenger-side airbag/side airbag

Model 202  
As of 07/97

Figure 4

A1e15	SRS MIL
A45	Horn/airbag clock spring contact
A53	Left side airbag sensor
A54	Right side airbag sensor
B48	Front passenger seat occupied recognition with automatic child seat recognition (ACSR)
N2/2	SRS control module
N72e1	Automatic child seat recognition warning lamp
R12/1	Left front ETR squib
R12/2	Right front ETR squib
R12/3	Driver airbag squib
R12/8	Front passenger airbag squib
R12/9	Left side airbag squib
R12/10	Right side airbag squib
S68/3	Left front seat belt buckle switch (airbag/ETR) 
S68/4	Right front seat belt buckle switch (airbag/ETR) 



P91.60-0498-06

## 16.3 Airbag (AB)

Models 129, 140, 170, 202, 208, 210

### Electrical Test Program - Component Locations



#### Driver/passenger-side airbag/side airbag

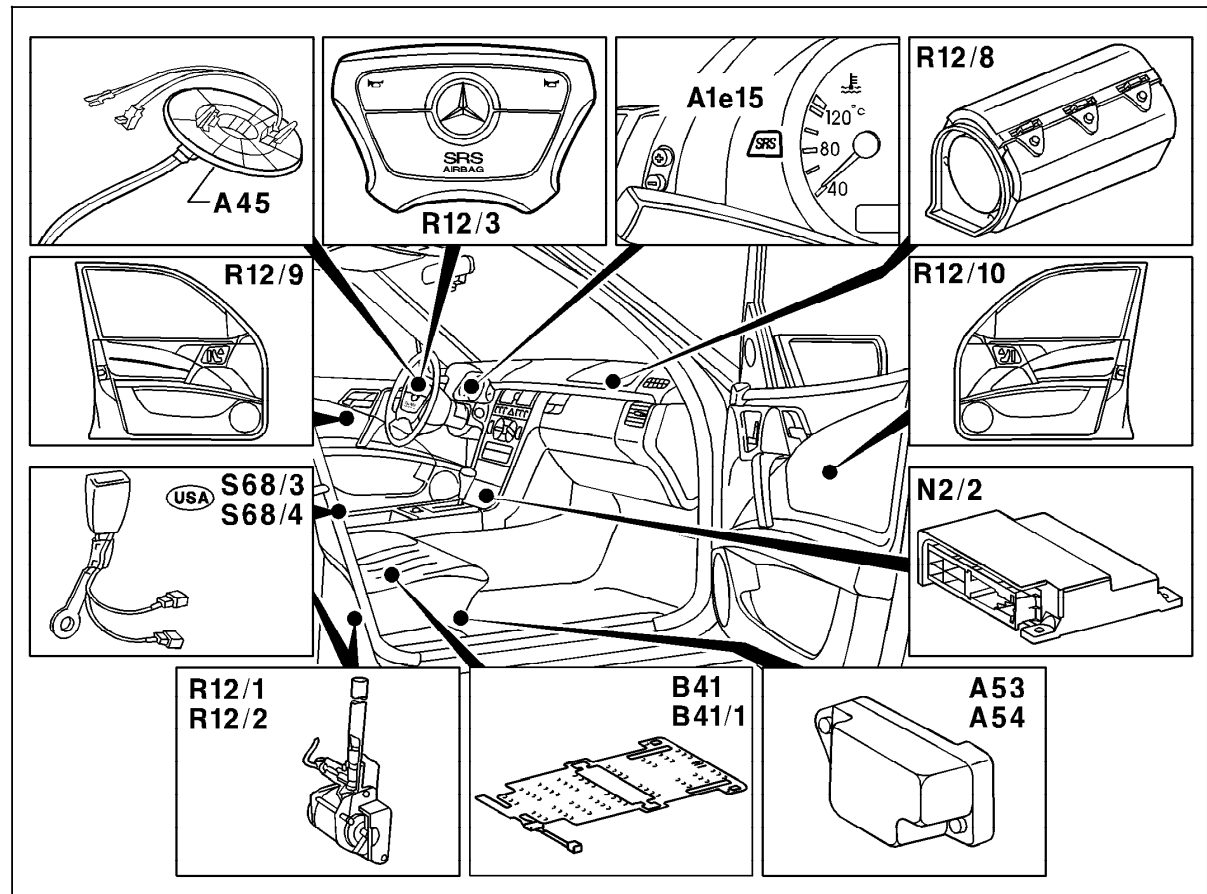
Model 210

Up to 03/97

With seat occupied recognition (SOR)

Figure 5

A1e15	SRS MIL
A45	Horn/airbag clock spring contact
A53	Left side airbag sensor
A54	Right side airbag sensor
B41/1	Front passenger seat occupied recognition sensor
N2/2	SRS control module
R12/1	Left front ETR squib
R12/2	Right front ETR squib
R12/3	Driver airbag squib
R12/8	Front passenger airbag squib
R12/9	Left side airbag squib
R12/10	Right side airbag squib
S68/3	Left front seat belt buckle switch (airbag/ETR) 
S68/4	Right front seat belt buckle switch (airbag/ETR) 



P91.60-0239-06

## 16.3 Airbag (AB)

Models 129, 140, 170, 202, 208, 210



### Electrical Test Program - Component Locations

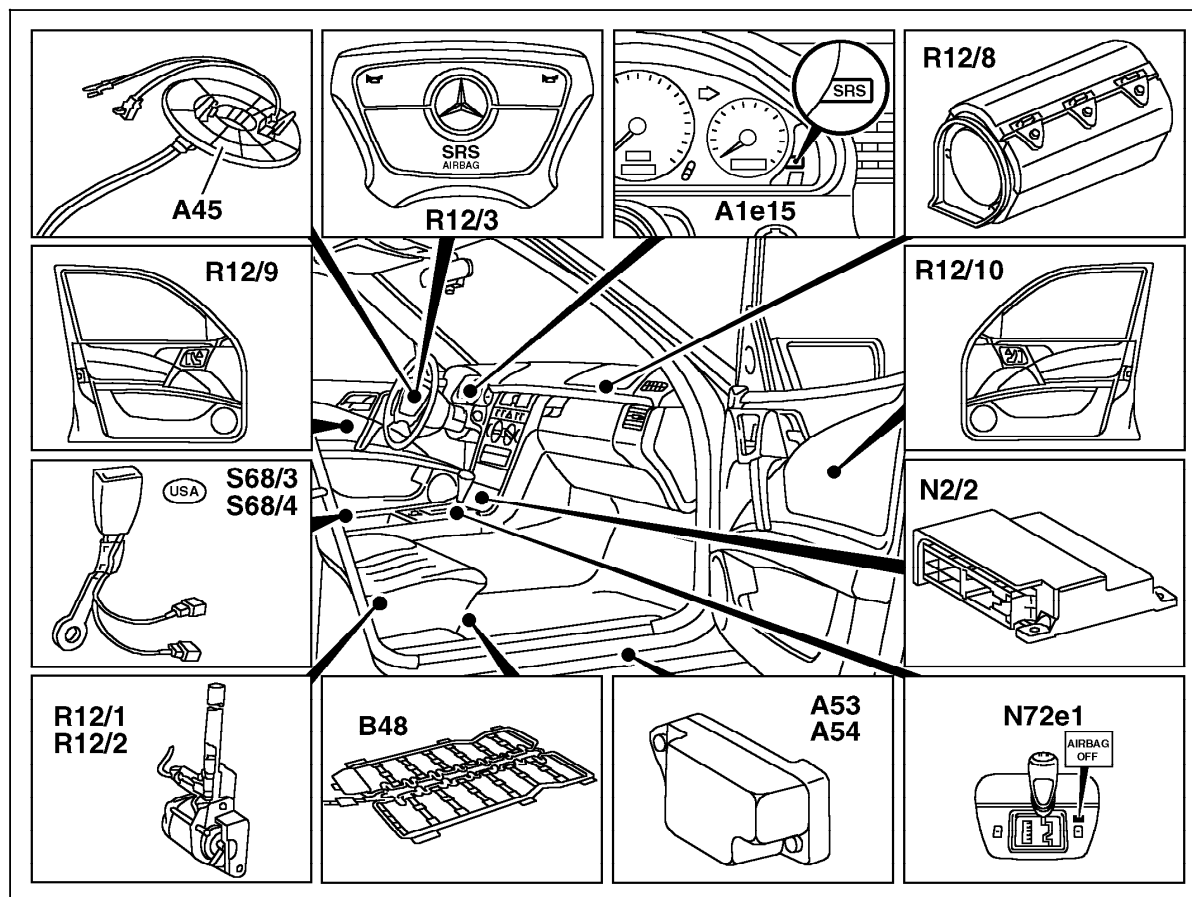
#### Driver/passenger-side airbag/side airbag

##### Model 210

As of 03/97 and up to 07/98

Figure 5

A1e15	SRS MIL
A45	Horn/airbag clock spring contact
A53	Left side airbag sensor
A54	Right side airbag sensor
B48	Front passenger seat occupied recognition with automatic child seat recognition (ACSR)
N2/2	SRS control module
N72e1	Automatic child seat recognition warning lamp
R12/1	Left front ETR squib
R12/2	Right front ETR squib
R12/3	Driver airbag squib
R12/8	Front passenger airbag squib
R12/9	Left side airbag squib
R12/10	Right side airbag squib
S68/3	Left front seat belt buckle switch (airbag/ETR) 
S68/4	Right front seat belt buckle switch (airbag/ETR) 



P91.60-0498-06