

## Electrical Test Program - Component Locations

Driver/passenger-side airbag/  
side airbag/windowbag

Model 210 with rear door sidebags and  
rear seat belt ETR's

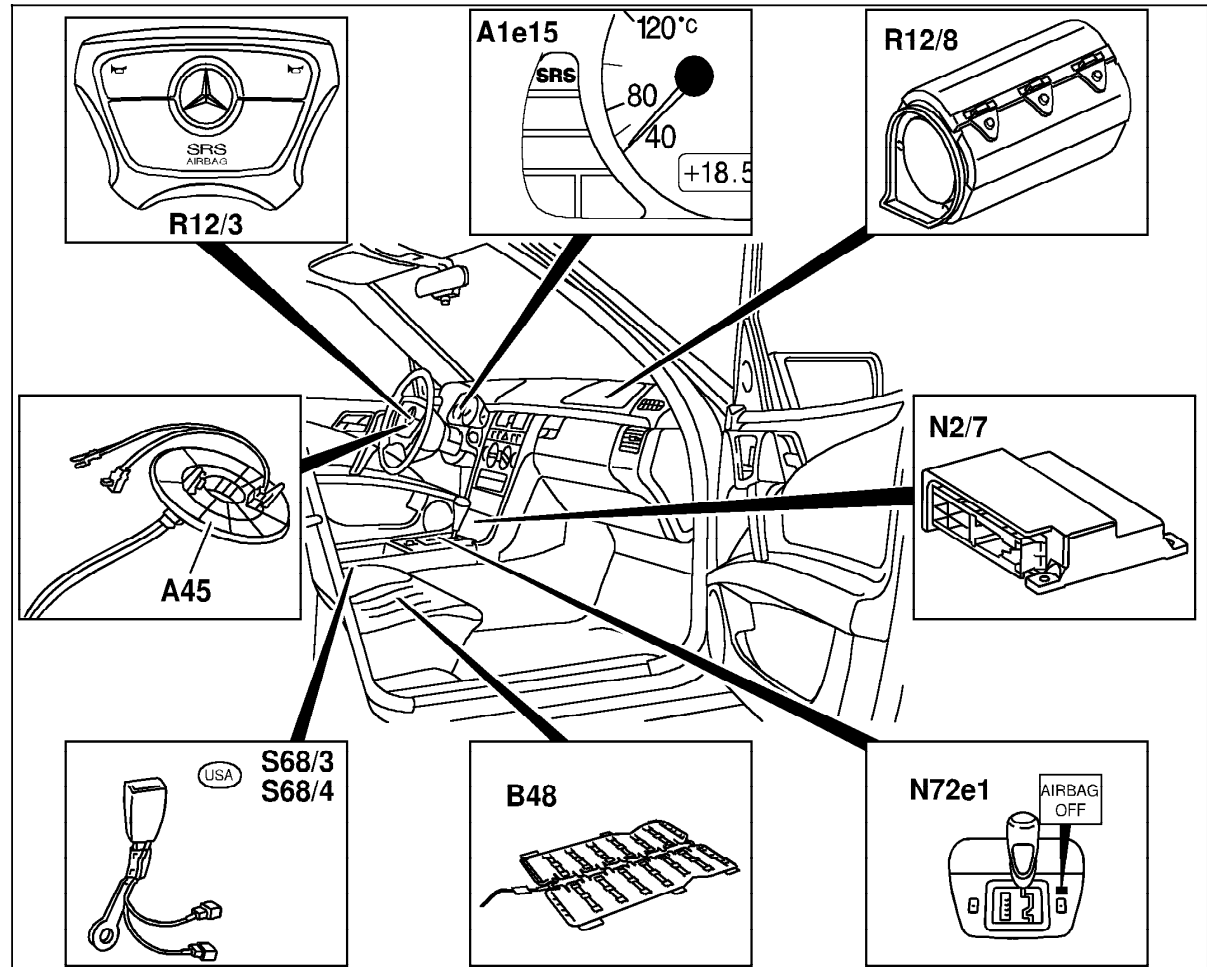


Figure 1

- A1e15 SRS MIL
- A45 Horn/airbag clock spring contact
- B48 Front passenger seat occupied recognition with automatic child seat recognition (ASCR)
- N2/7 ARMIN control module
- N72e1 Automatic child seat recognition warning lamp
- R12/3 Driver airbag squib
- R12/8 Front passenger airbag squib
- S68/3 Left front seat belt buckle switch (airbag/ETR) (USA)
- S68/4 Right front seat belt buckle switch (airbag/ETR) (USA)

P91.60-2028-06

Electrical Test Program - Component Locations

Driver/passenger-side airbag/side airbag/windowbag

Model 210 with rear door sidebags, rear seat belt ETR's and windowbags

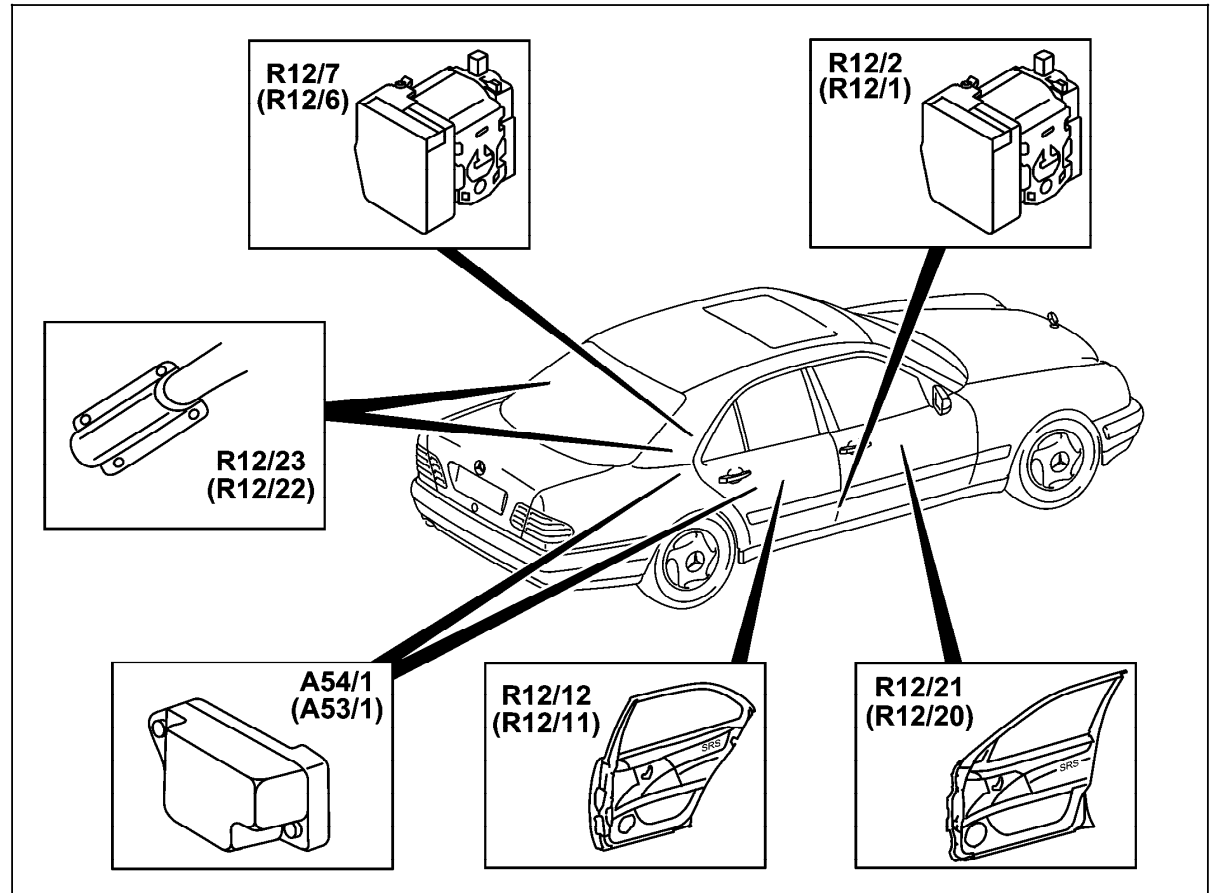


Figure 2

- A53/1 Left side airbag sensor
- A54/1 Right side airbag sensor
- R12/1 Left front ETR squib
- R12/2 Right front ETR squib
- R12/6 LR ETR squib
- R12/7 RR ETR squib
- R12/11 LR side airbag squib
- R12/12 RR side airbag squib
- R12/20 Left front side airbag squib
- R12/21 Right front side airbag squib
- R12/22 Left rear side windowbag squib
- R12/23 Right rear side window squib

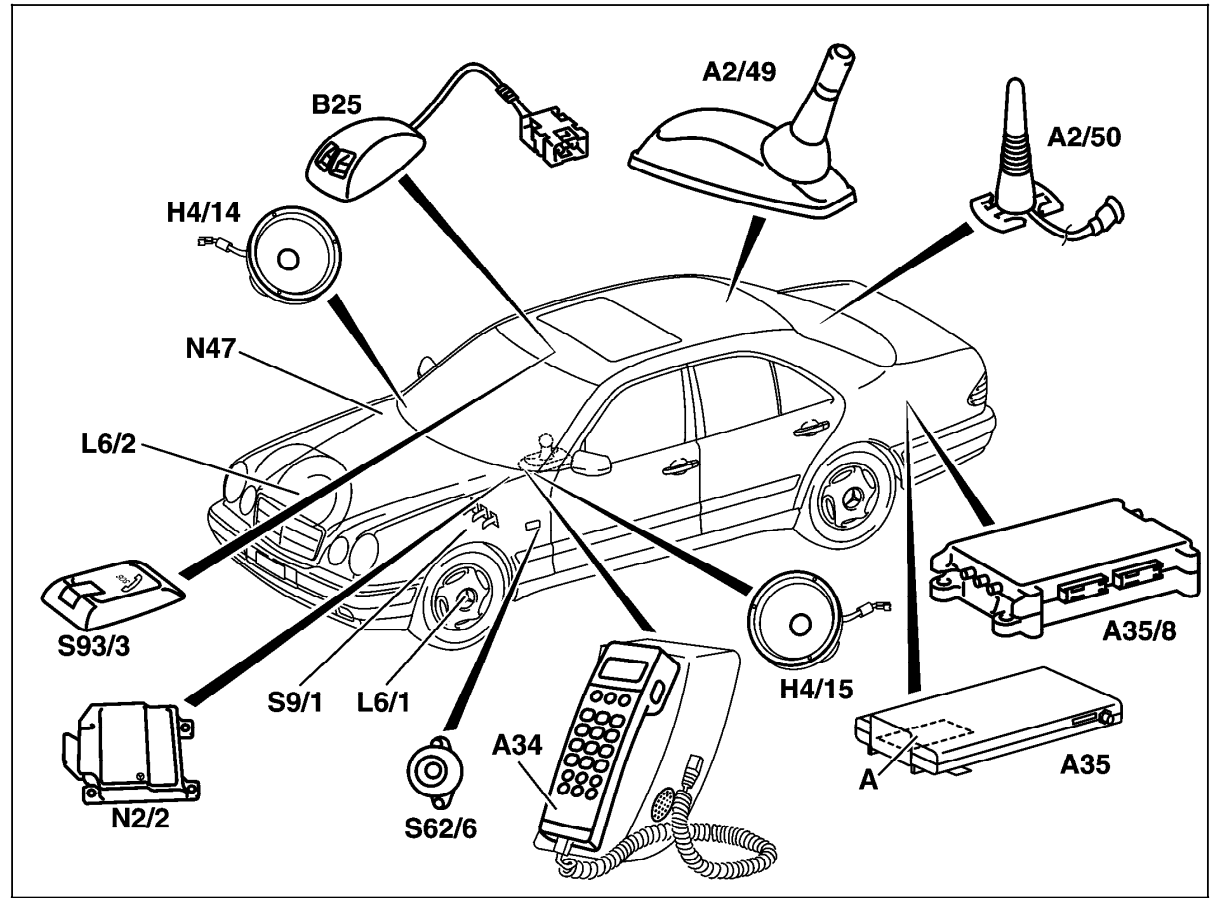
P91.60-2055-06

Electrical Test Program – Location of Components

TELE AID System

Figure 3

- A Telephone card (not **USA**)
- A2/49 CTEL/GPS (Global Positioning System) roof antenna
- A2/50 TELE AID backup antenna
- A34 CTEL handset (not **USA**)
- A35 CTEL transmitter-receiver
- A35/8 Emergency call system control module (TELE AID)
- B25 Hands-free microphone
- H4/14 Right front HFS speaker
- H15/4 Left front HFS speaker
- L6/1 Left front VSS
- L6/2 Right front VSS
- N2/2 SRS control module
- N47 Traction system control module
- S9/1 Stop lamp switch
- S62/6 Panic alarm activation switch (not **USA**)
- S93/3 Emergency call system pushbutton (TELE AID)



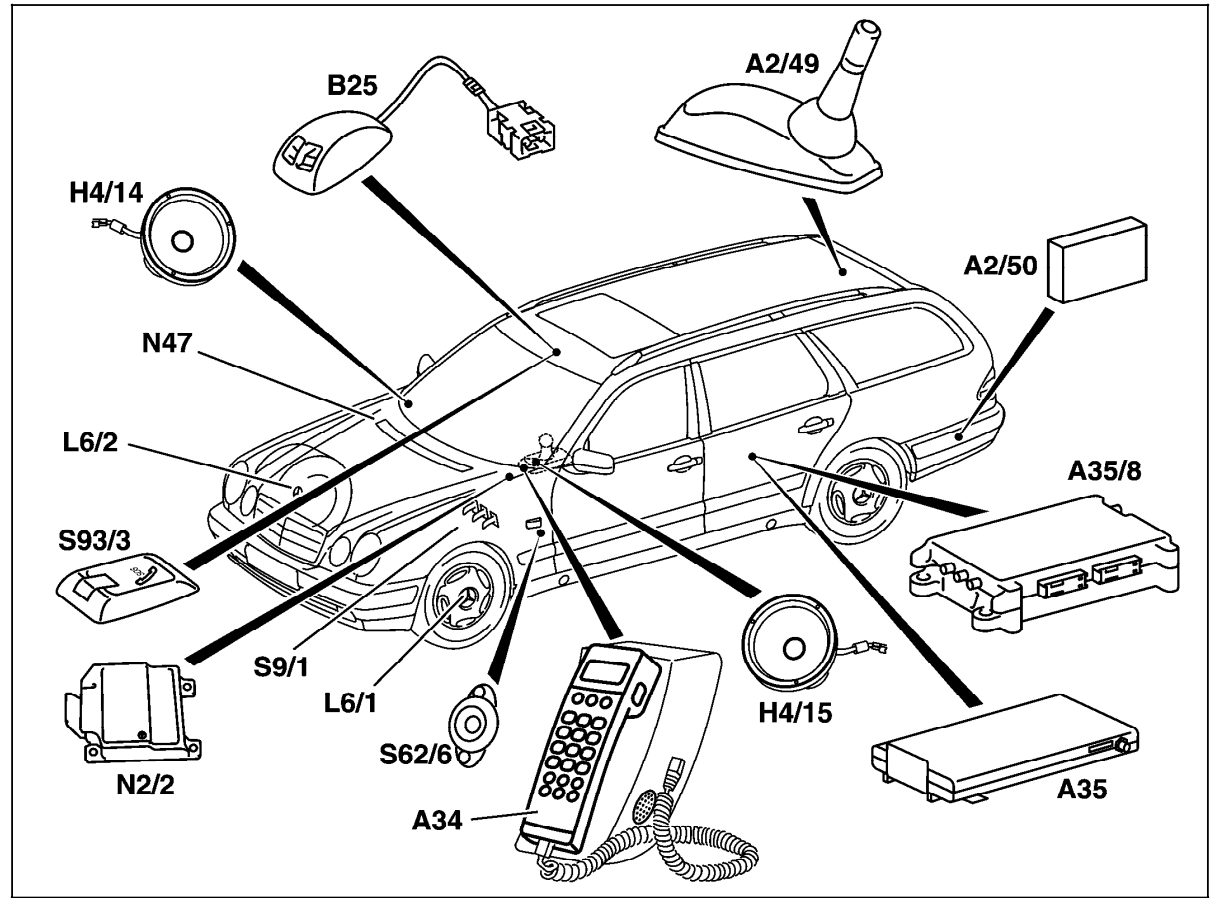
P82.95-0200-06

Electrical Test Program – Location of Components

TELE AID System

Figure 4

- A Telephone card (not **USA**)
- A2/49 CTEL/GPS (Global Positioning System) roof antenna
- A2/50 TELE AID backup antenna
- A34 CTEL handset (not **USA**)
- A35 CTEL transmitter-receiver
- A35/8 Emergency call system control module (TELE AID)
- B25 Hands-free microphone
- H4/14 Right front HFS speaker
- H15/4 Left front HFS speaker
- L6/1 Left front VSS
- L6/2 Right front VSS
- N2/2 SRS control module
- N47 Traction system control module
- S9/1 Stop lamp switch
- S62/6 Panic alarm activation switch (not **USA**)
- S93/3 Emergency call system pushbutton (TELE AID)



P82.95-0207-06