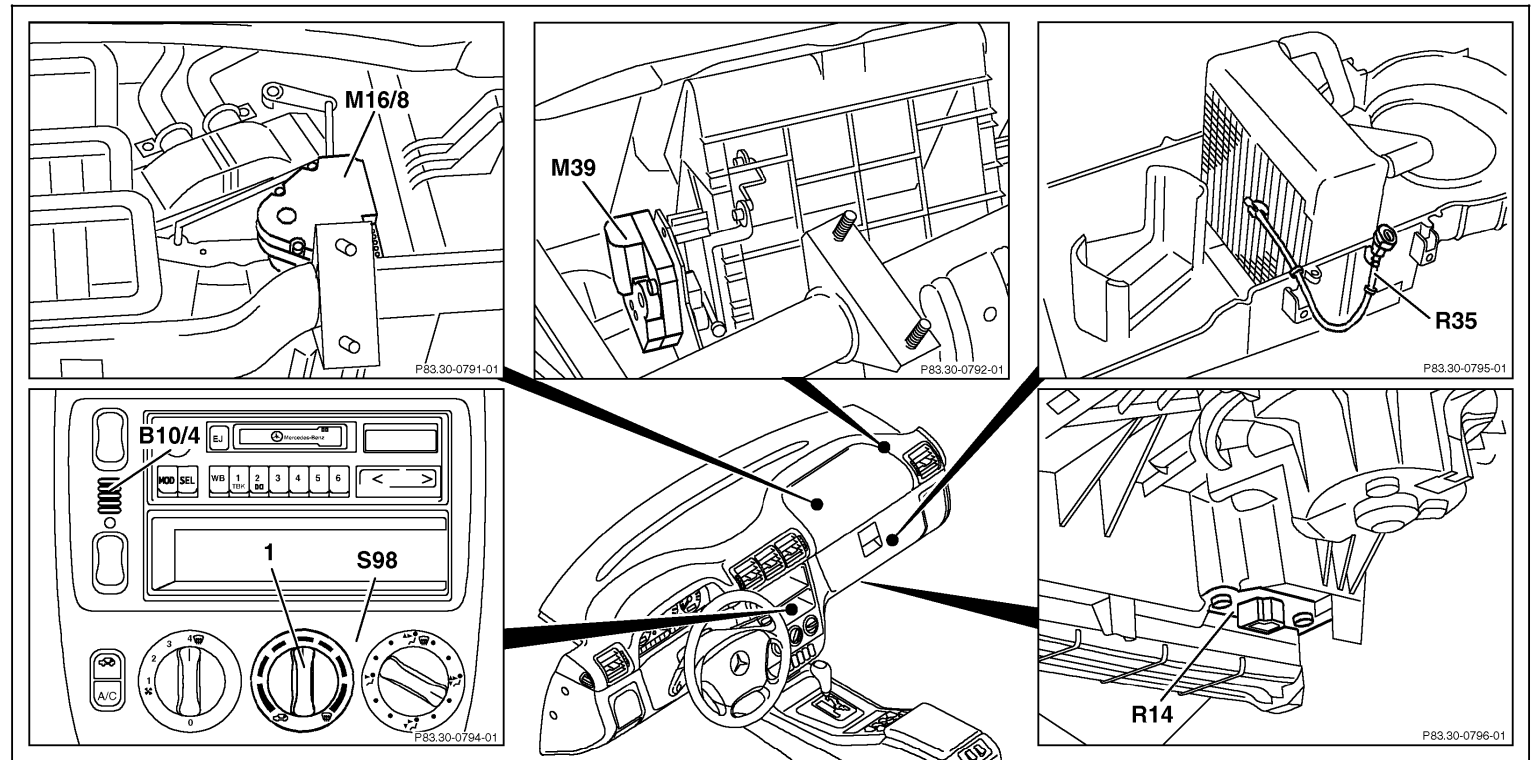


Electrical Test Program – Component Locations

Components Location in Passenger Compartment



P83.30-0806-09

Figure 1

- |       |                                |     |                                     |
|-------|--------------------------------|-----|-------------------------------------|
| 1     | Temperature selector wheel     | R14 | Blower motor preresistor group      |
| B10/4 | In-car temperature sensor      | R35 | Icing protection temperature sensor |
| M16/8 | Blend air flap actuator motor  | S98 | Heater/AC switch                    |
| M39   | Recirculation air flap element |     |                                     |

Electrical Test Program – Component Locations

Components Location in Passenger Compartment  
As of 12/99

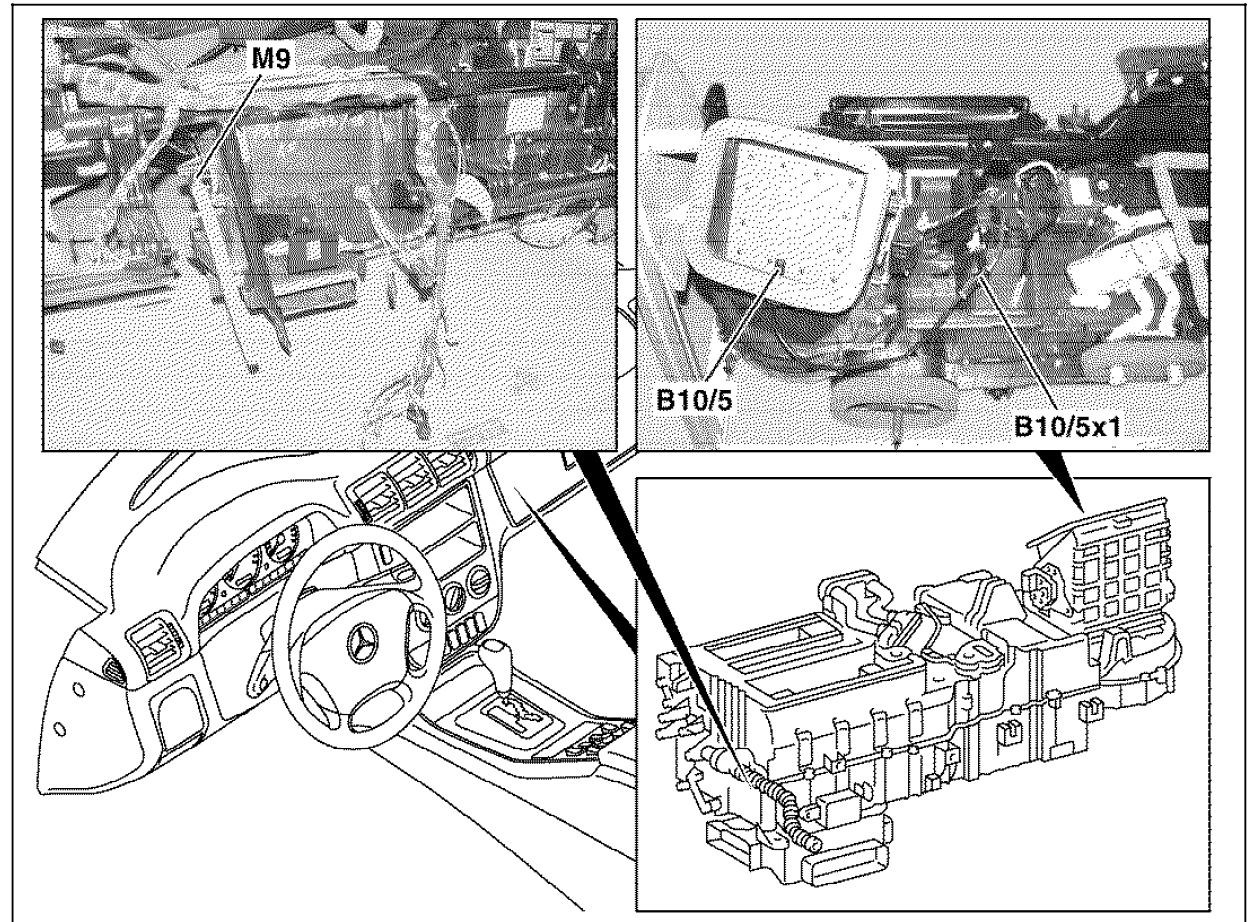


Figure 2

- M9 In-car temperature sensor aspirator blower
- B10/5 Outside temperature sensor
- B10/5x1 Outside temperature sensor connector

P83.30-3353-06

Electrical Test Program – Component Locations

Components Location in Passenger Compartment

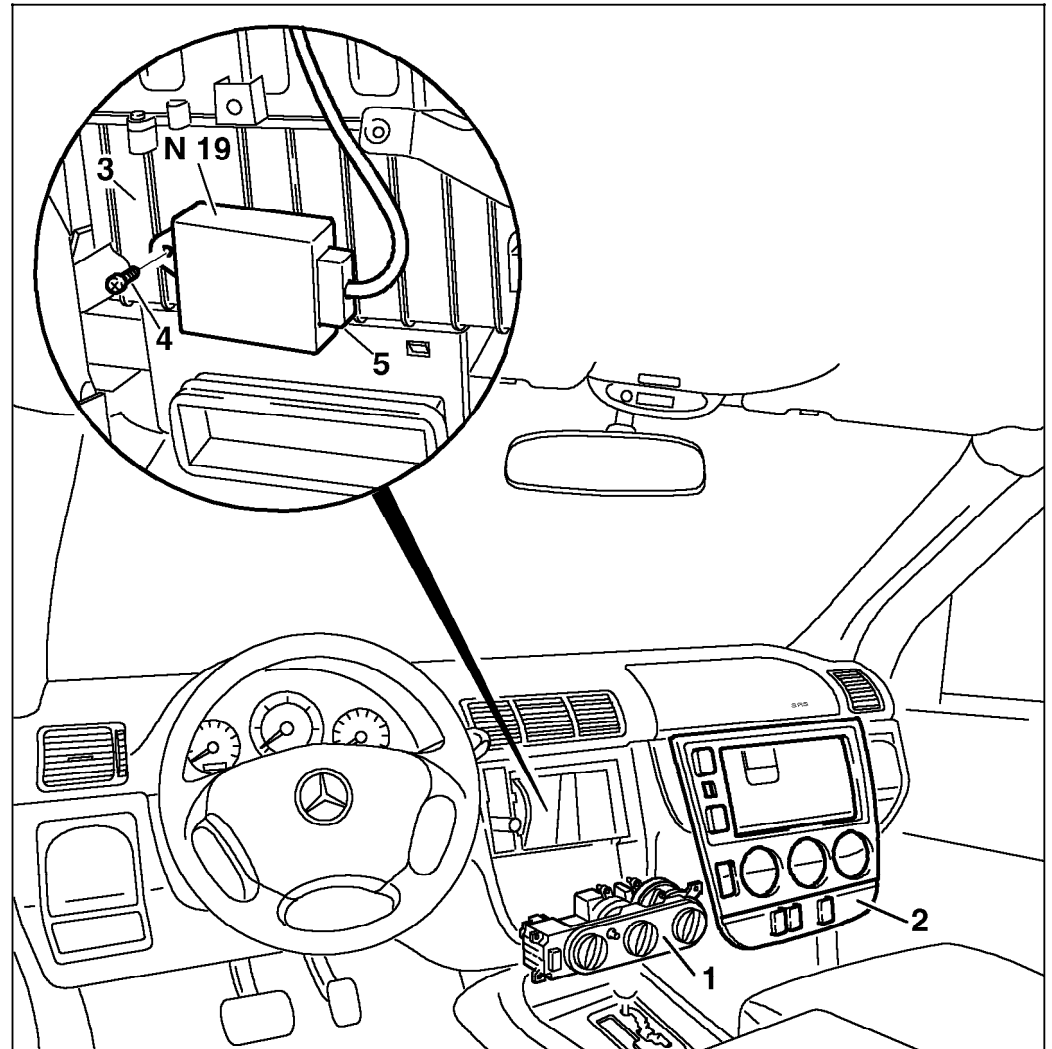


Figure 3

- 1 Heater/AC switch
- 2 Cover plate
- 3 A/C housing
- 4 Screw
- 5 Connector
- N19 A/C pushbutton control module

P83.30-0752-12

Electrical Test Program – Component Locations

Components Location in Engine Compartment

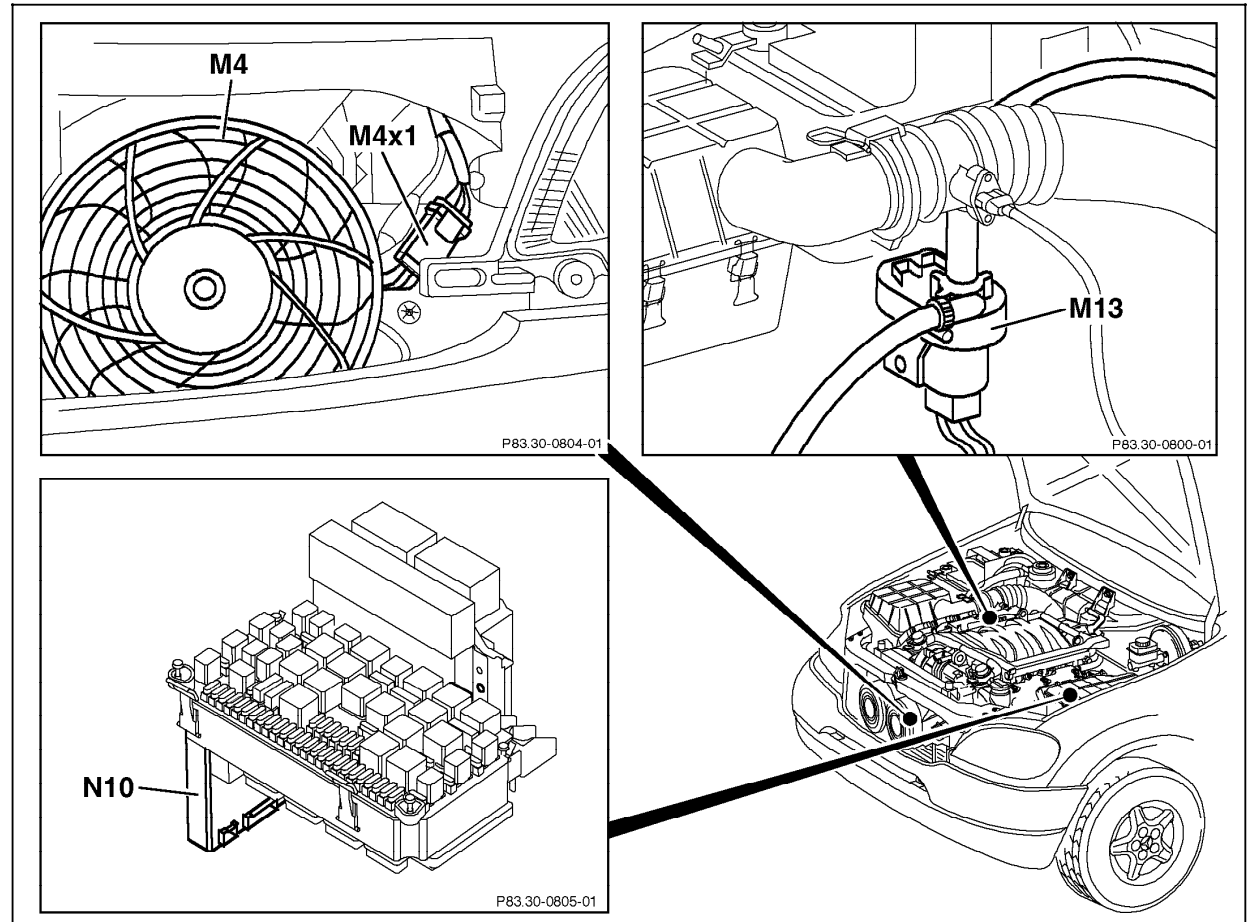


Figure 4

- M4 Auxiliary Fan
- M4x1 Auxiliary Fan connector
- M13 Coolant circulation pump
- N10 All Activity Module (AAM)

Electrical Test Program – Component Locations

Component Locations of the A/C System  
Up to 11/99

- 1 Expansion valve
- 2 Evaporator
- 3 Suction line
- 4 High pressure line to evaporator
- 5 High pressure line to receiver/drier
- 6 Receiver/drier
- 7 Condenser
- 8 High pressure line to condenser
- A Low pressure connection
- B High pressure connection
- A9 A/C compressor
- B12 Refrigerant pressure sensor

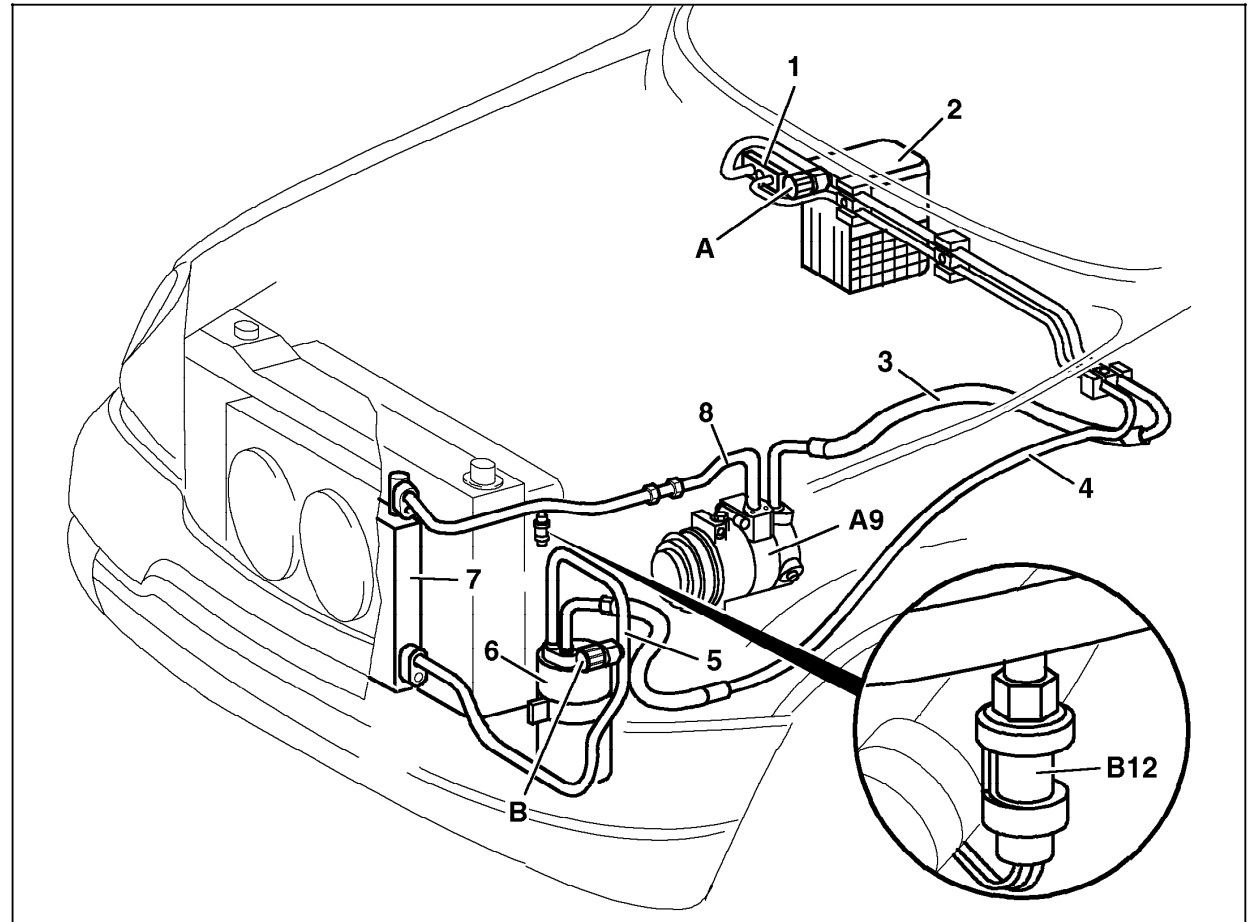


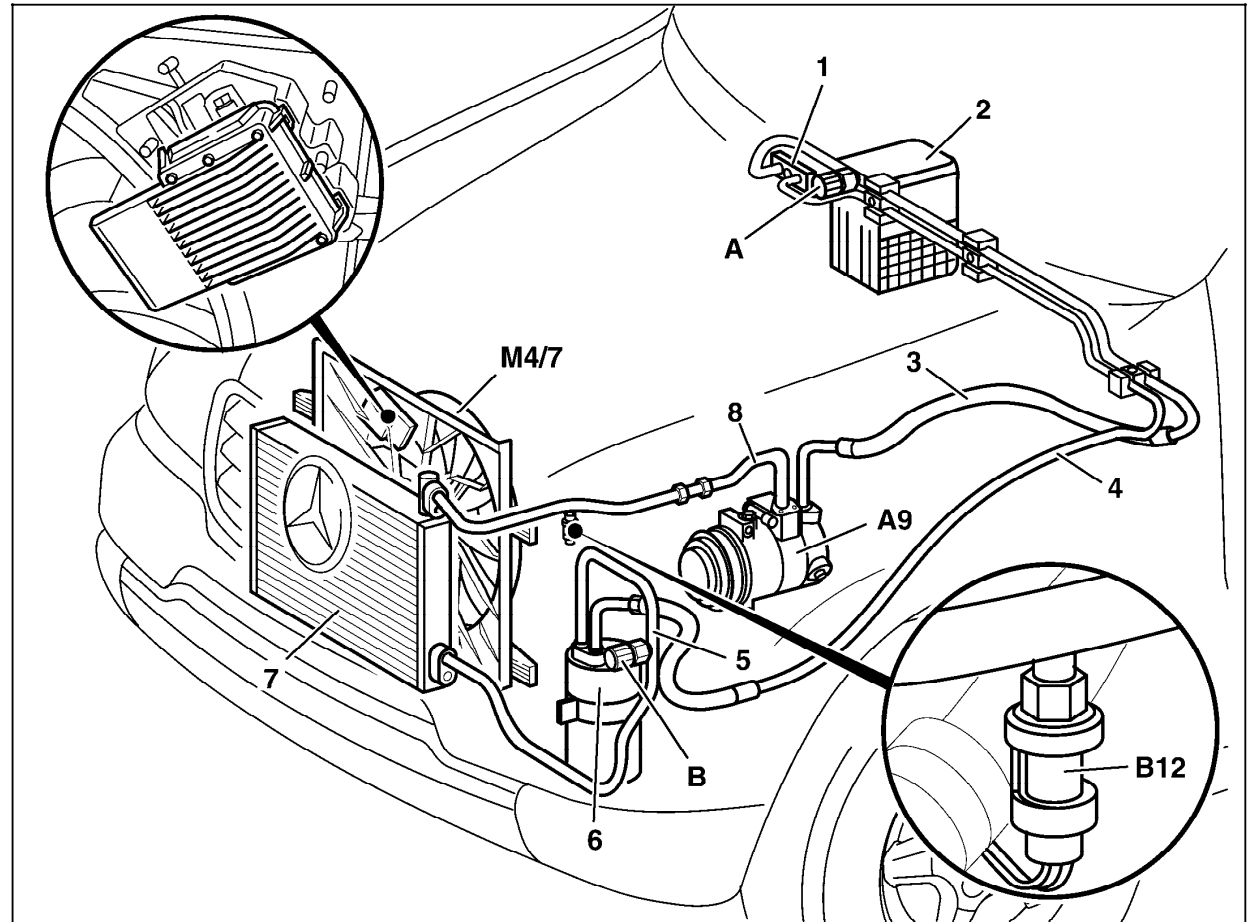
Figure 5

P83.30-0784-06

Electrical Test Program – Component Locations

Component Locations of the A/C System  
As of 12/99

- 1 Expansion valve
- 2 Evaporator
- 3 Suction line
- 4 High pressure line to evaporator
- 5 High pressure line to condenser
- 6 Receiver/drier
- 7 Condenser
- 8 High pressure line to condenser
  
- A Low pressure connection
- B High pressure connection
- A9 A/C compressor
- B12 Refrigerant pressure sensor
- M4/7 Engine/climate control electric cooling fan with integrated control
- N76 Engine/climate control electric cooling fan control module (shown as insert)



P83.30-3356-06