

Electrical Test Program – Component Locations

Component locations in Passenger Compartment

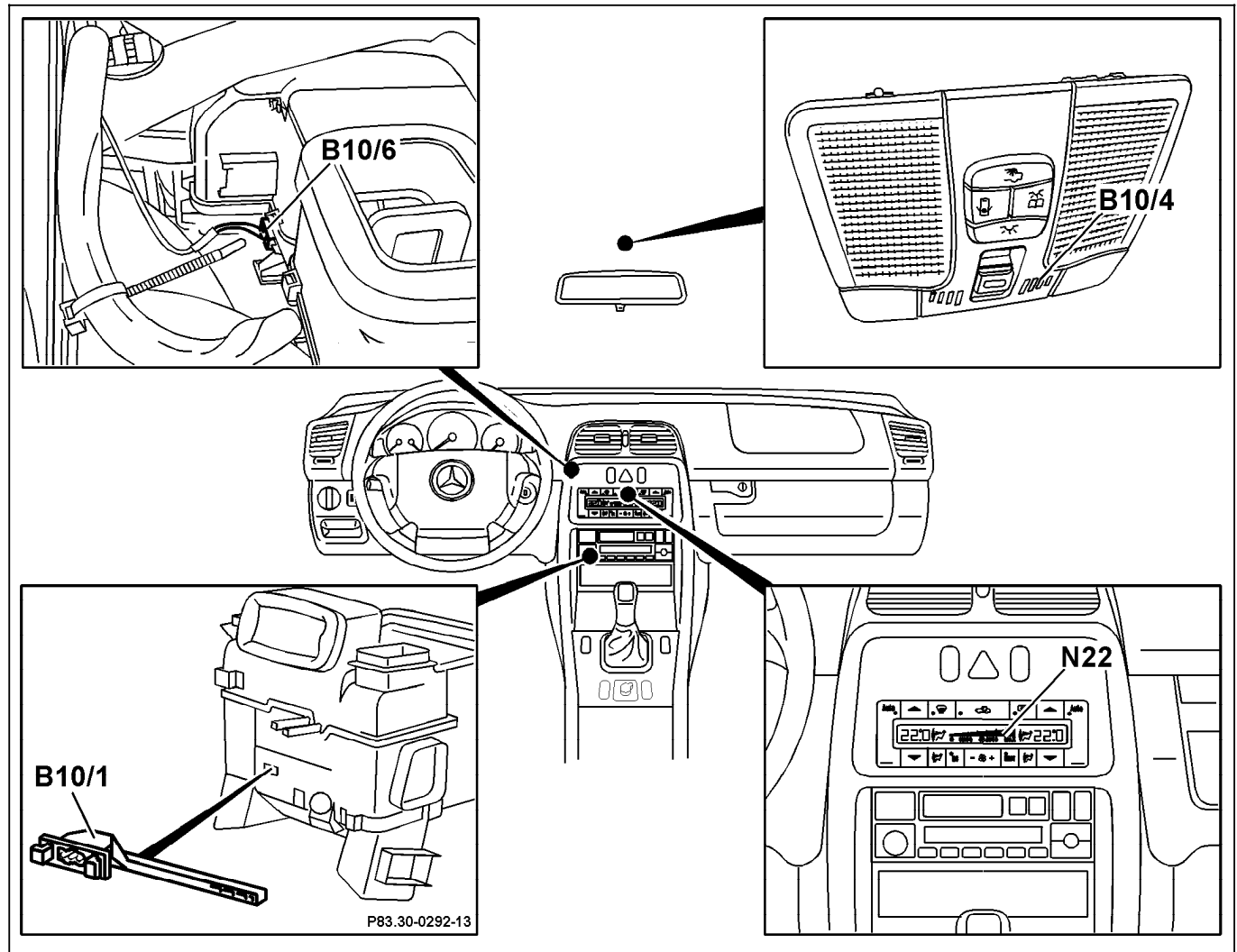


Figure 1

- B10/1 Heater core temperature sensor
- B10/4 In-car temperature sensor
- B10/6 Evaporator temperature sensor
- N22 A/C pushbutton control module

P83.40-0415-06

Electrical Test Program – Component Locations

Component locations in Engine Compartment

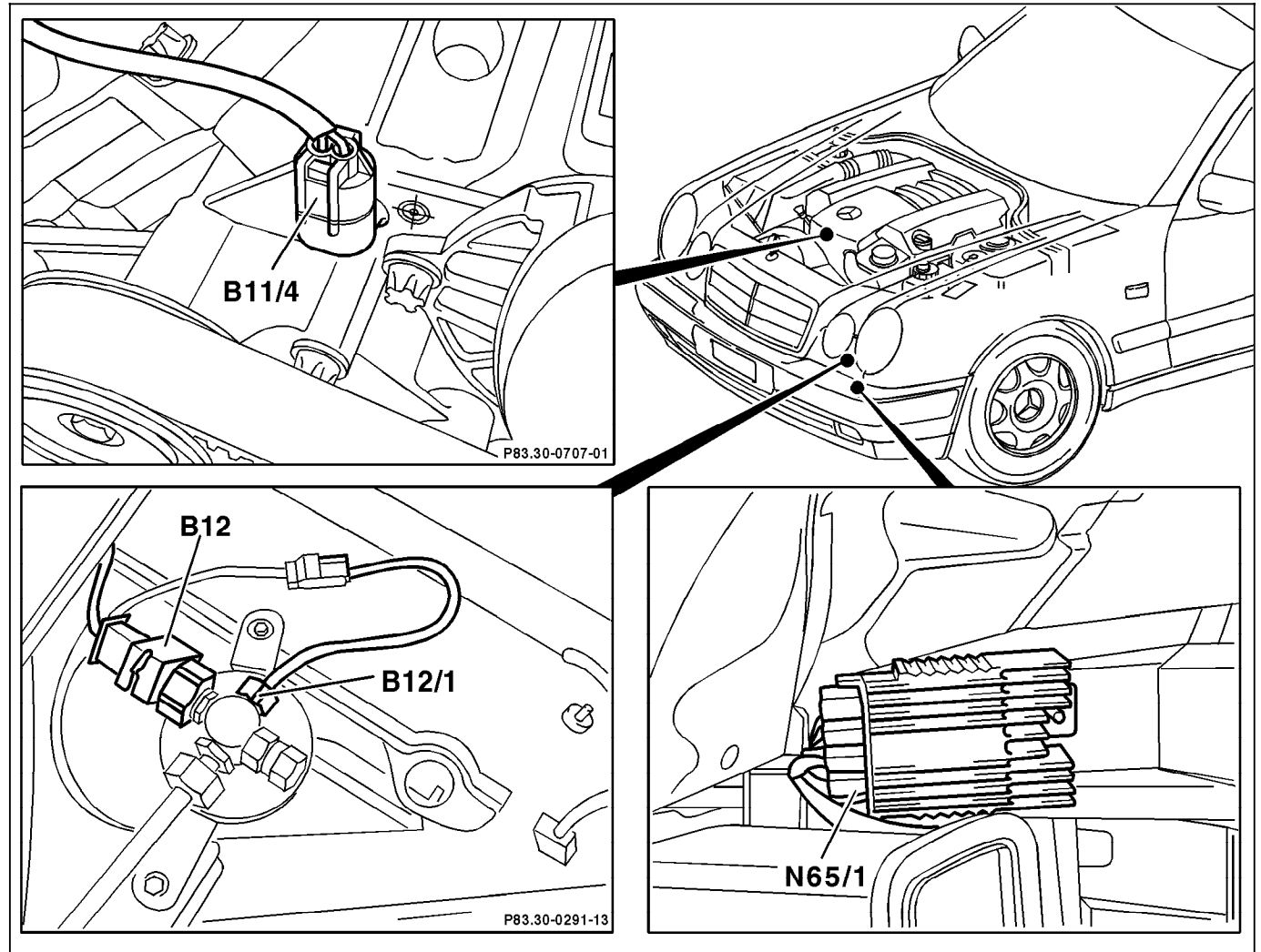
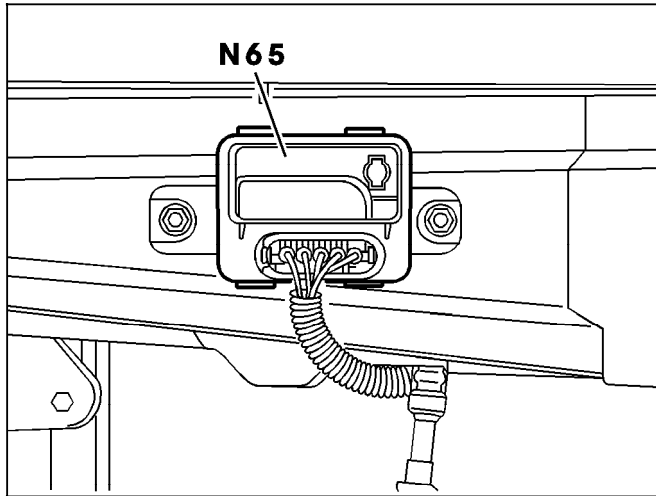


Figure 2

- B11/4 ECT sensor (DFI, IFI)
- B12 Refrigerant pressure sensor
- B12/1 Refrigerant temperature sensor
- N65/1 AIR control module

P83.40-0413-06

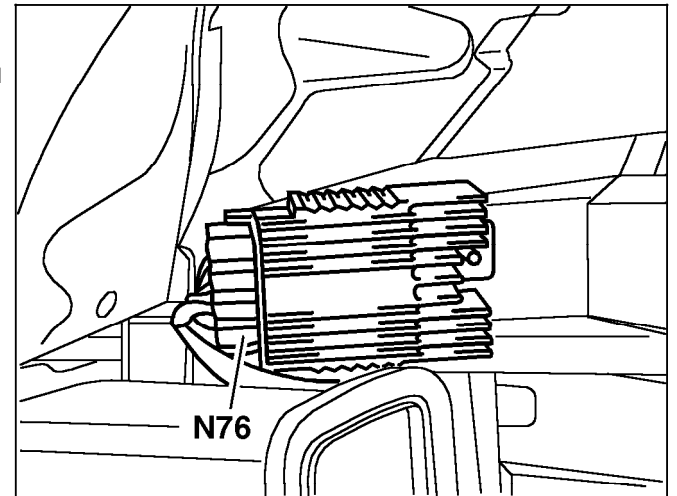
Electrical Test Program – Component Locations



N65/1 AIR control module

Figure 3

P83.40-0312-01



N76 Engine/climate control electrical cooling fan control module

Figure 4

P83.30-0857-01

Electrical Test Program – Component Locations

Location of Power Soft Control Module (N52) (Model 208.465 only)

A7/5	RB hydraulic unit (power soft top)
A7/5k1	Hydraulic unit relay
A7/5m1	Hydraulic unit motor
N52	Power soft top control module
Y56/2	Power top valve block (7 connections)
a	Valve for manual unlock of power soft top compartment cover

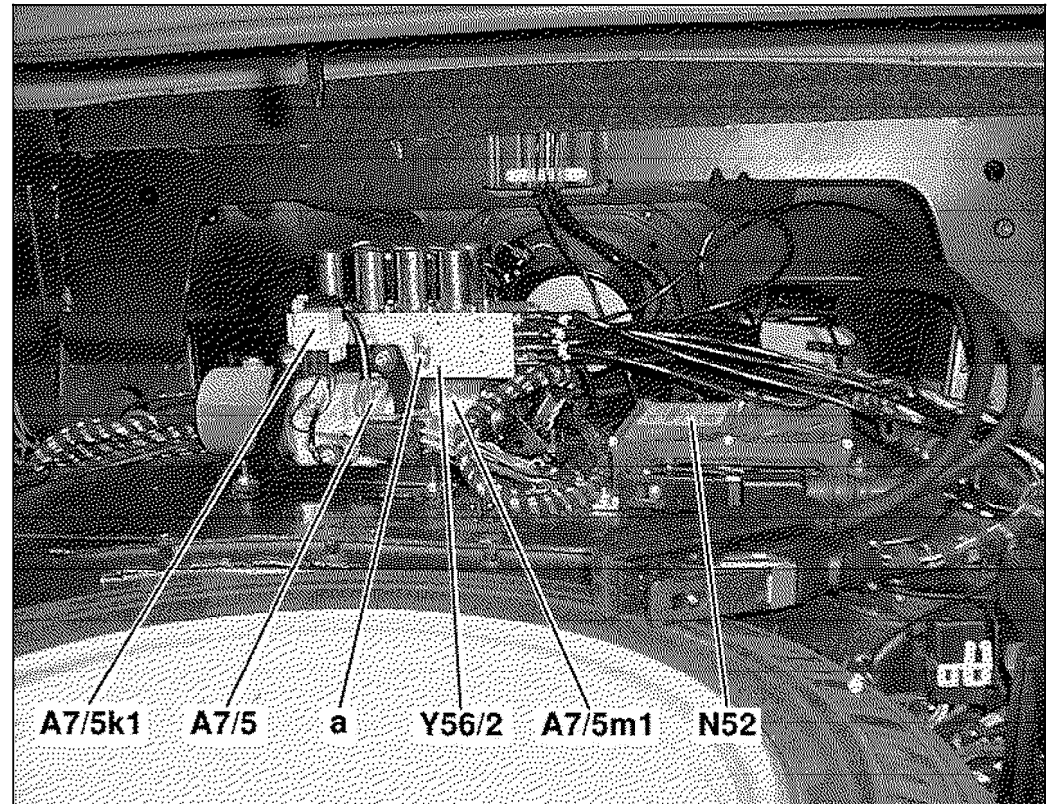


Figure 5

P77.37-2007-11