

Pneumatic Test Program – Component Locations

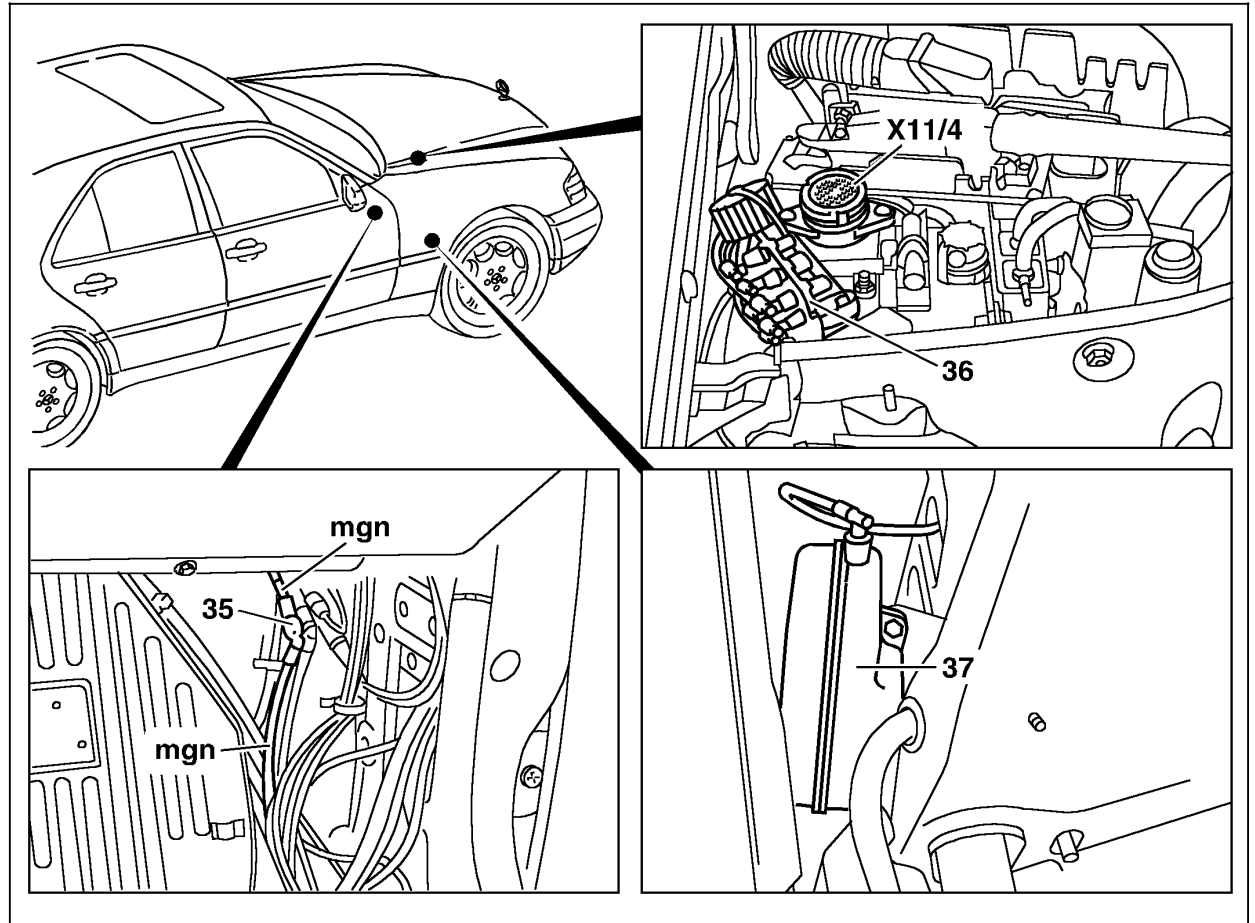


Figure 1

36 Vacuum distributor block

P83.40-0438-06

Pneumatic Test Program – Component Locations

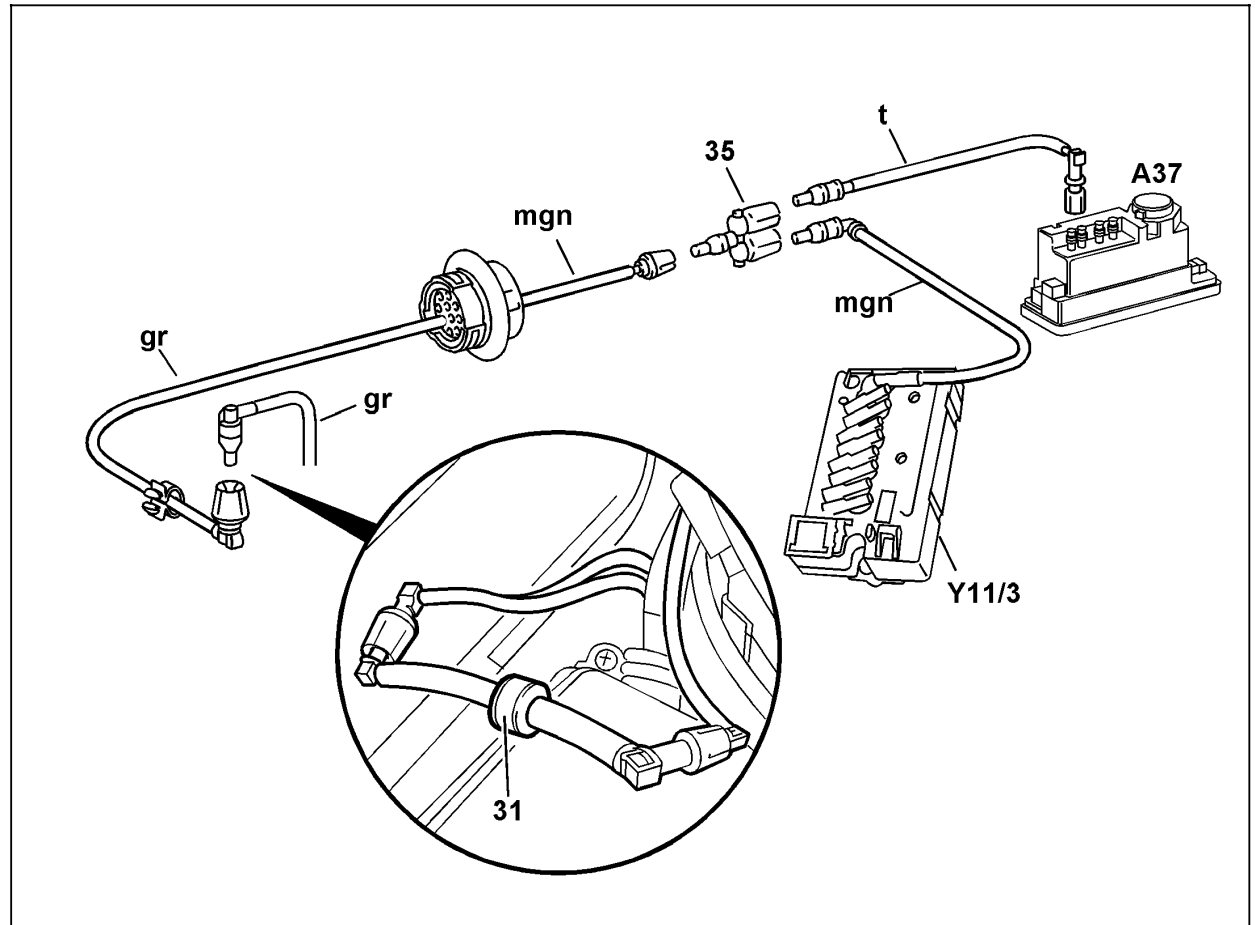


Figure 2

- 31 Check valve
- 35 Connector (passenger compartment)
- A37 PSE control module
- Y11 Switchover valve block (4 connections)
  
- gr Grey
- mgn Medium green
- t Transparent

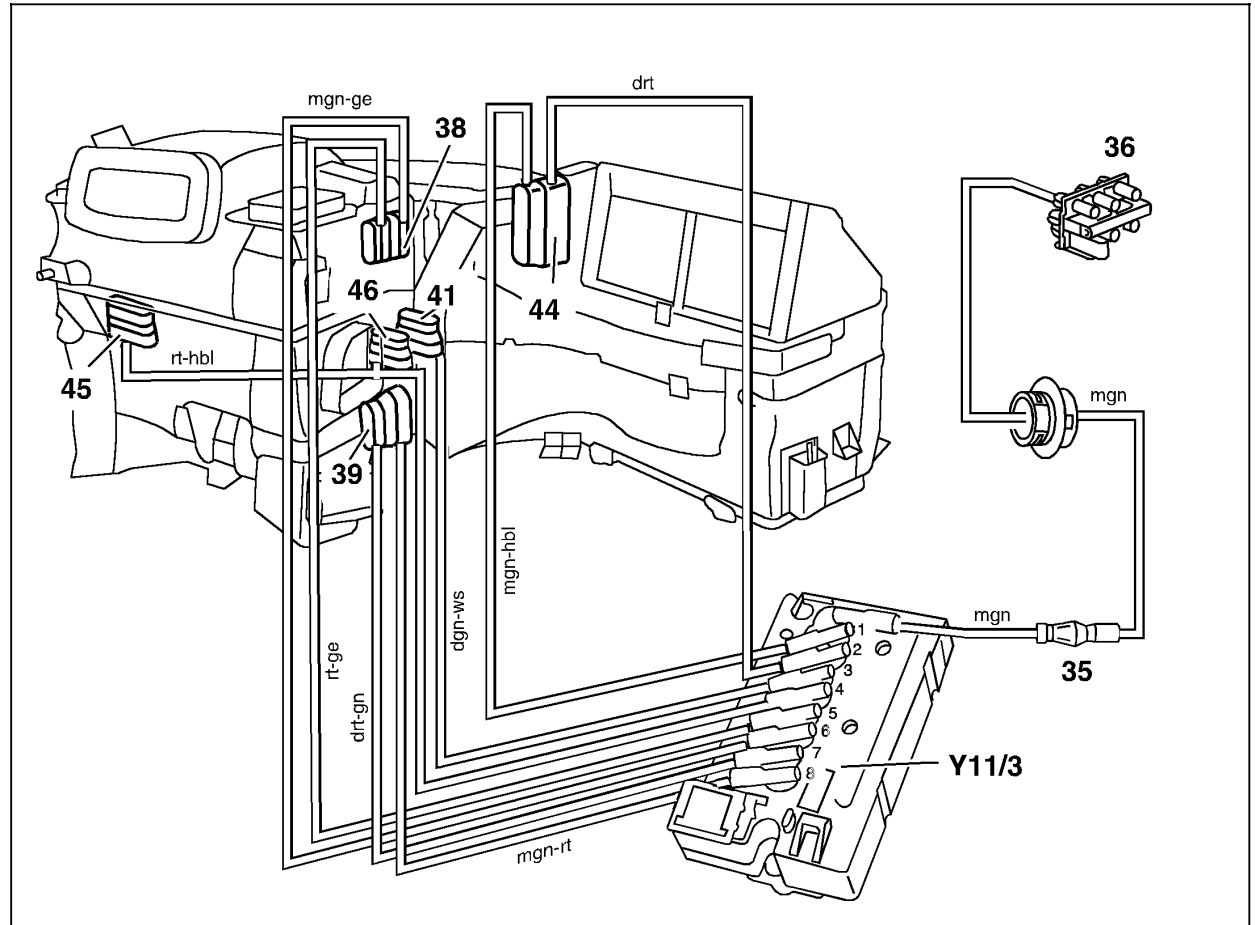
P83.40-0429-06

Pneumatic Test Program – Component Locations

Figure 3

- 35 Connector (passenger compartment)
- 36 Vacuum distributor block
- 38 Right defroster flap vacuum actuator
- 41 Diverter flap vacuum actuator
- 44 Fresh/recirculating air flap vacuum actuator
- 45 Left center outlet tempering flap vacuum actuator
- 46 Right center outlet tempering flap vacuum actuator
- Y11/3 Valve block (8 connector)

- hbl Light blue
- drt Dark red
- ge Yellow
- mgn Medium green
- rt Red
- ws White
- dgn Dark green



P83.40-0439-06