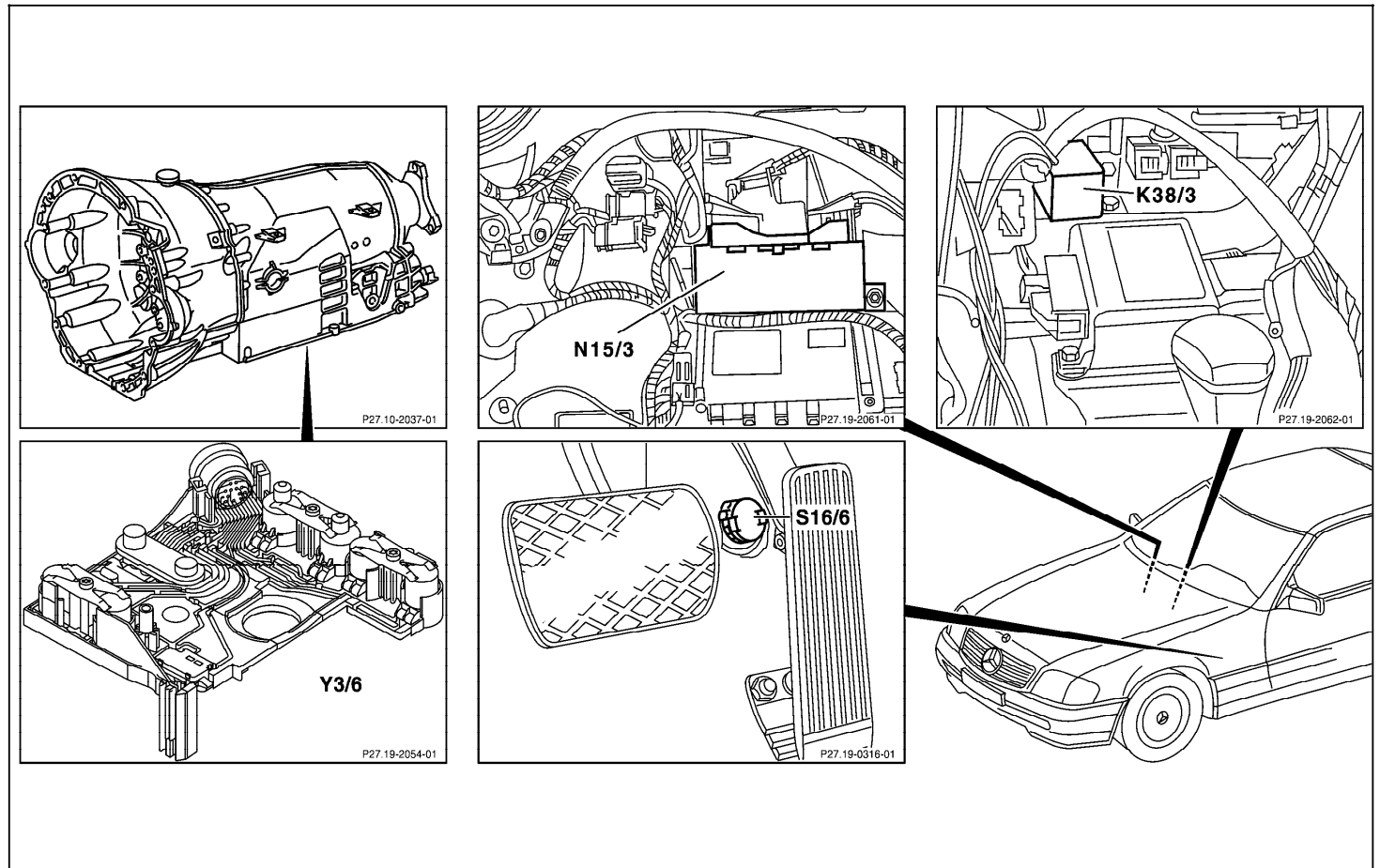


Electrical Test Program – Component Locations

Model 129

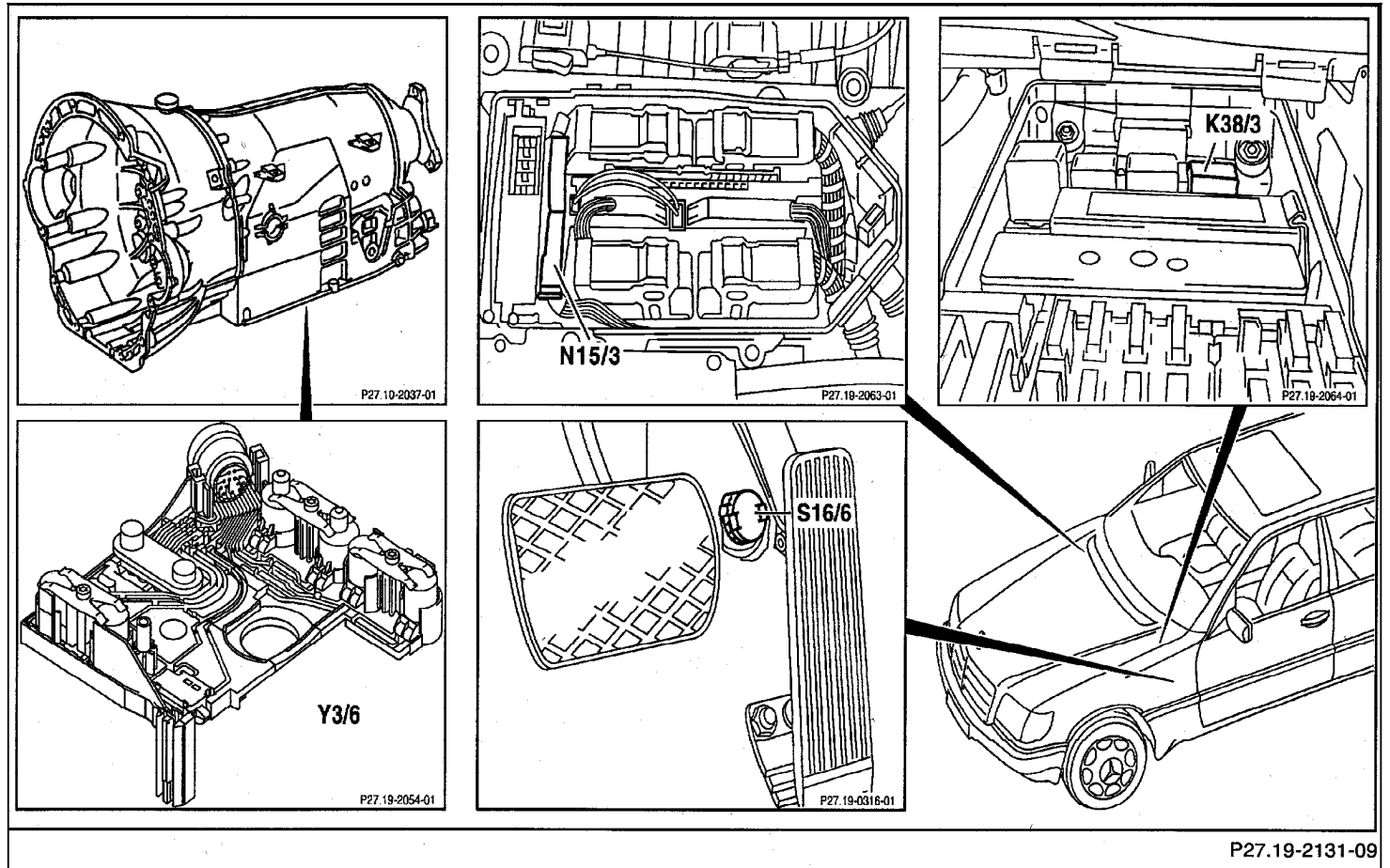


- K38/3 Starter lock-out relay module
- N15/3 ETC control module
- S16/6 Kick-down switch
- Y3/6 Valve unit (ETC)

P27.19-2053-09

Electrical Test Program – Component Locations

Model 140



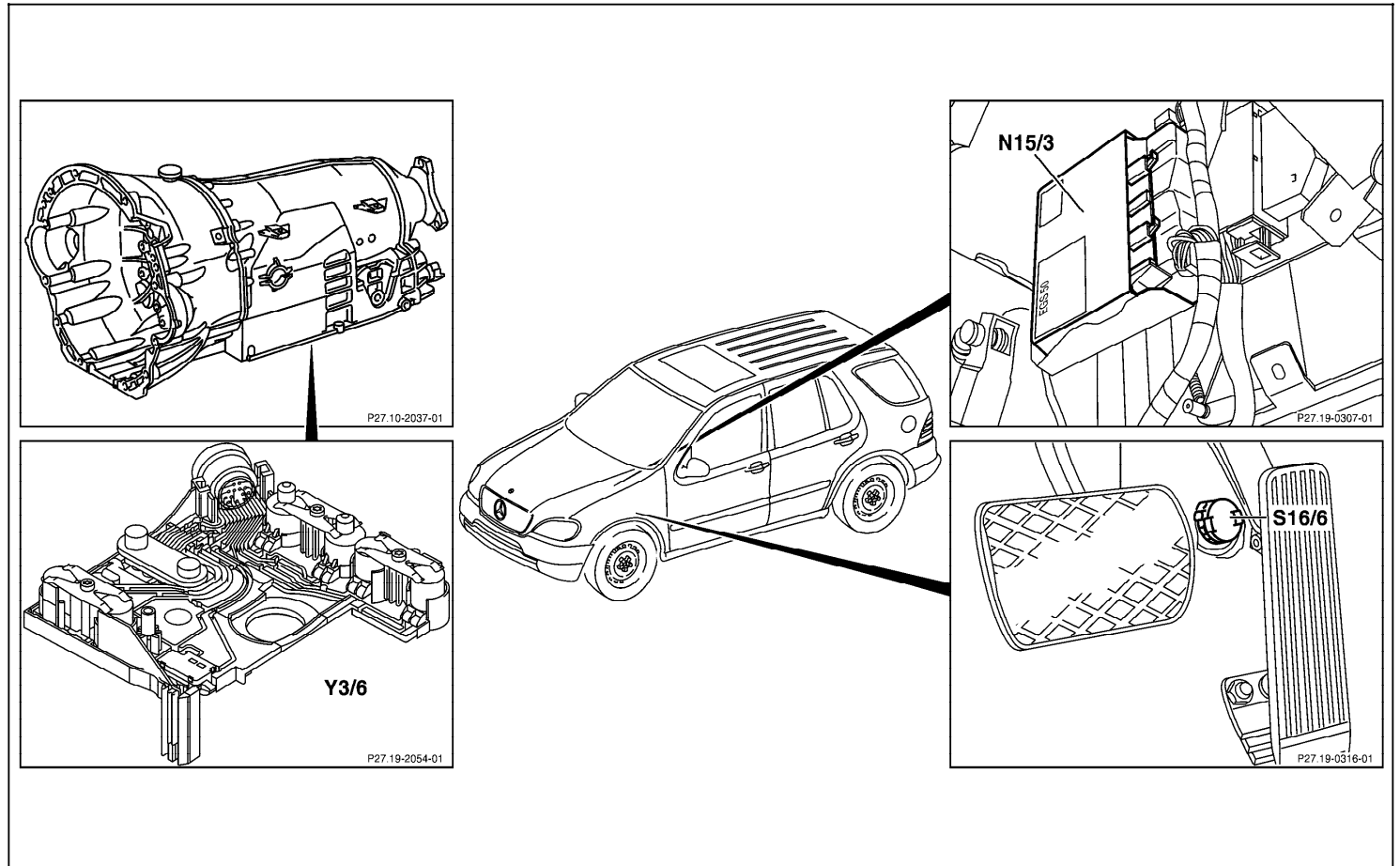
- K38/3 Starter lock-out relay module
- N15/3 ETC control module
- S16/6 Kick-down switch
- Y3/6 Valve unit (ETC)

P27.19-2131-09

P27.19-2131-09

Electrical Test Program – Component Locations

Model 163

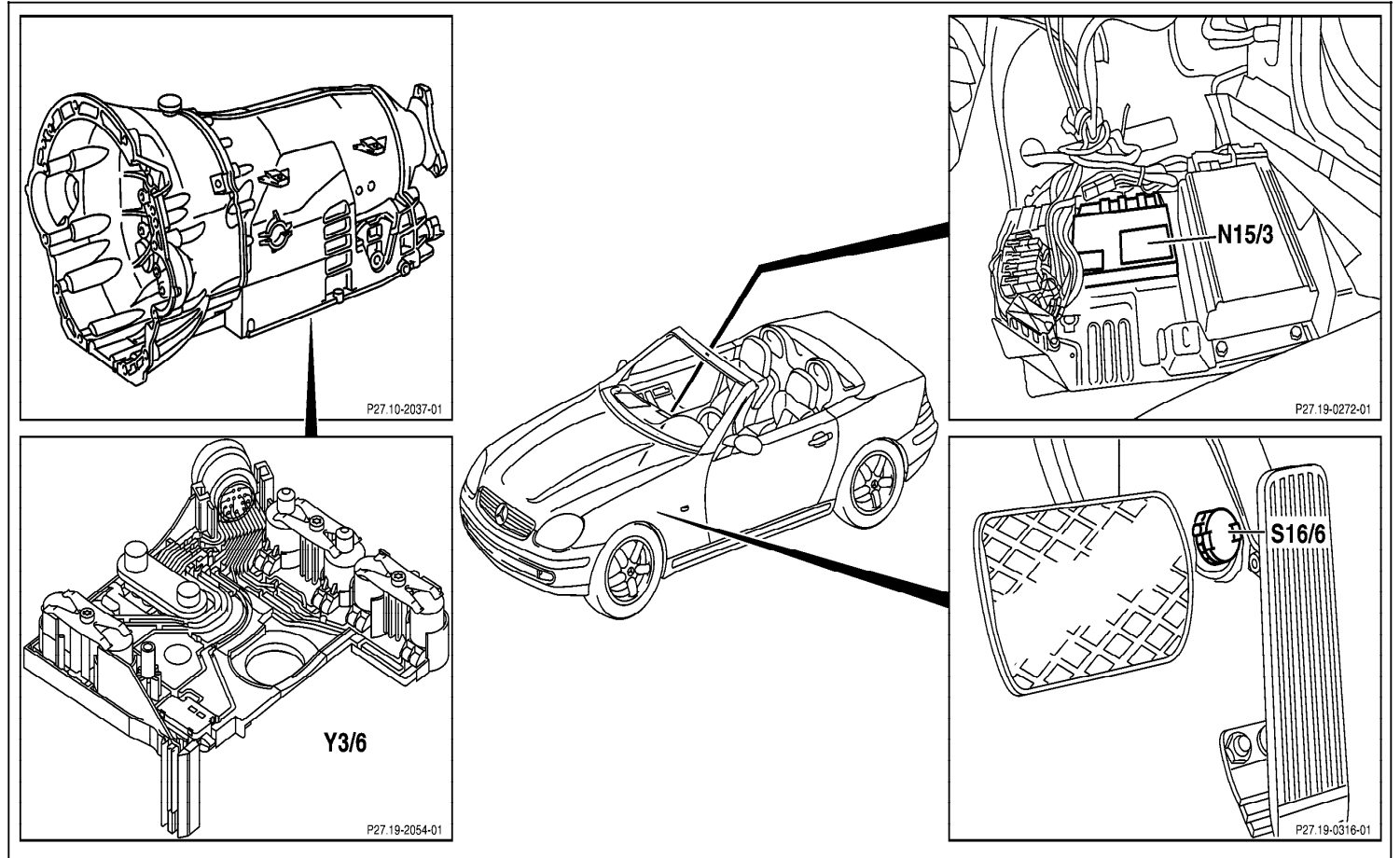


- N15/3 ETC control module
- S16/6 Kick-down switch
- Y3/6 Valve unit (ETC)

P27.19-2056-09

Electrical Test Program – Component Locations

Model 170

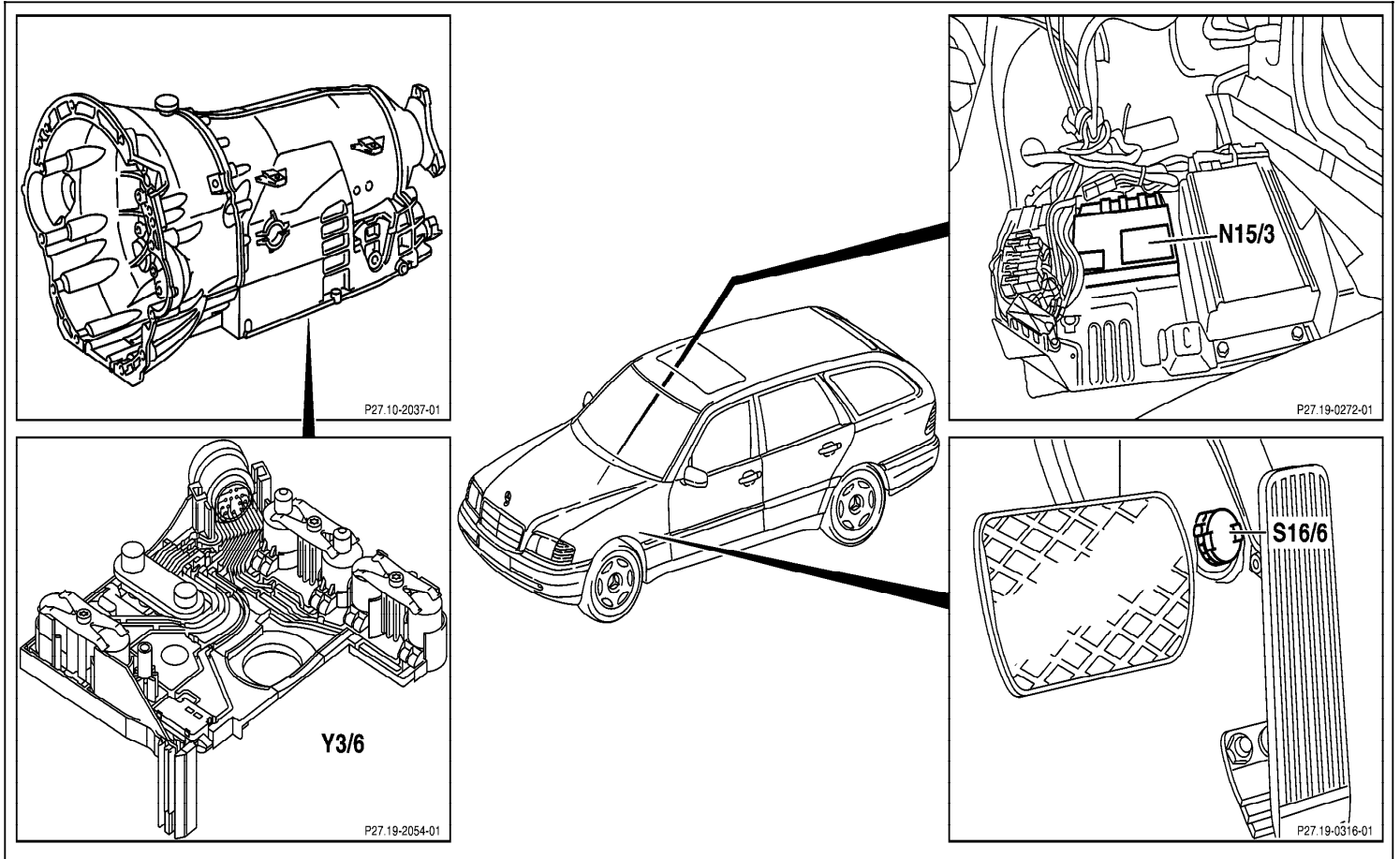


N15/3 ETC control module
S16/6 Kick-down switch
Y3/6 Valve unit (ETC)

P27.19-2057-09

Electrical Test Program – Component Locations

Model 202
(Wagen shown)
(not USA)

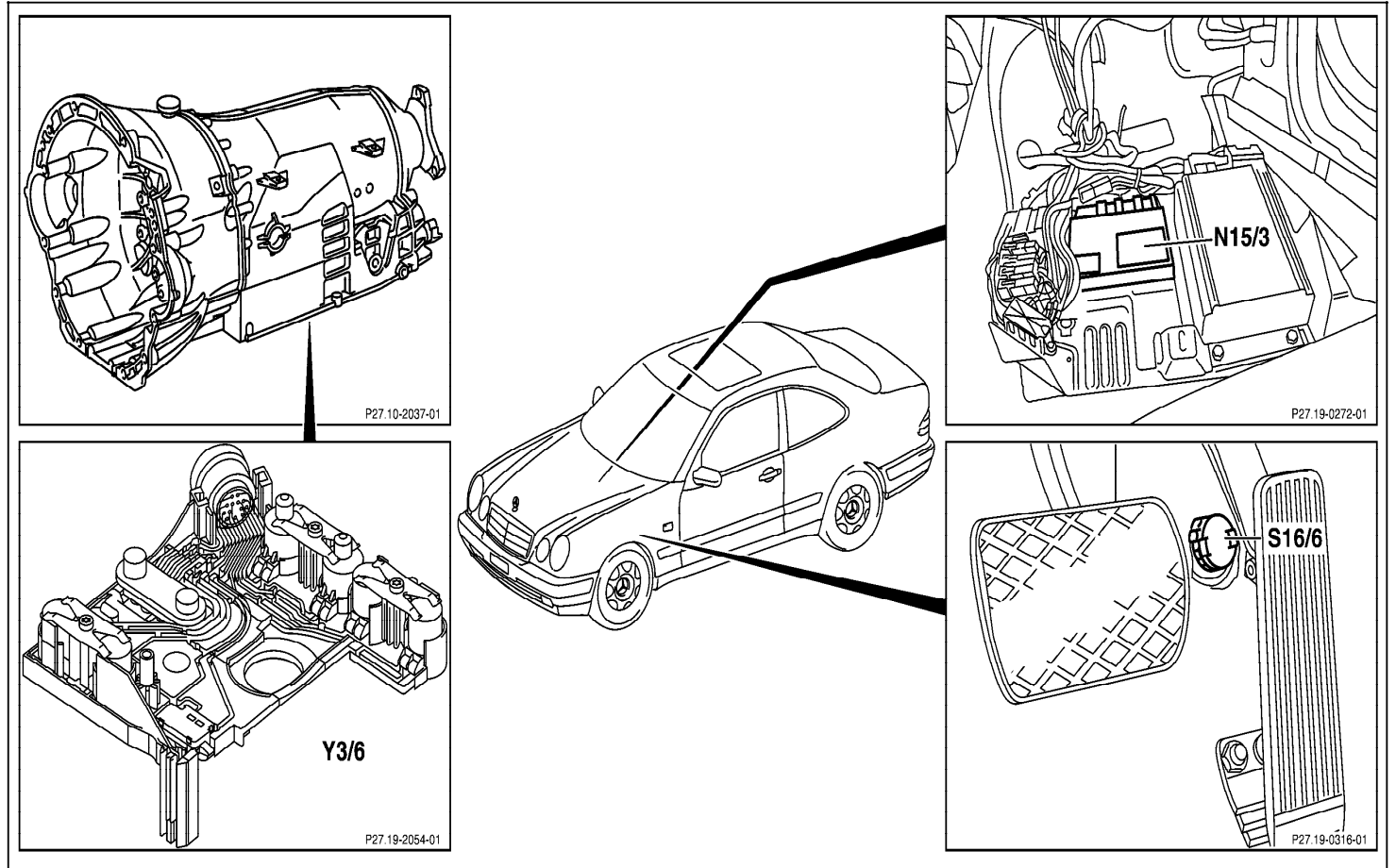


N15/3 ETC control module
S16/6 Kick-down switch
Y3/6 Valve unit (ETC)

P27.19-2058-09

Electrical Test Program – Component Locations

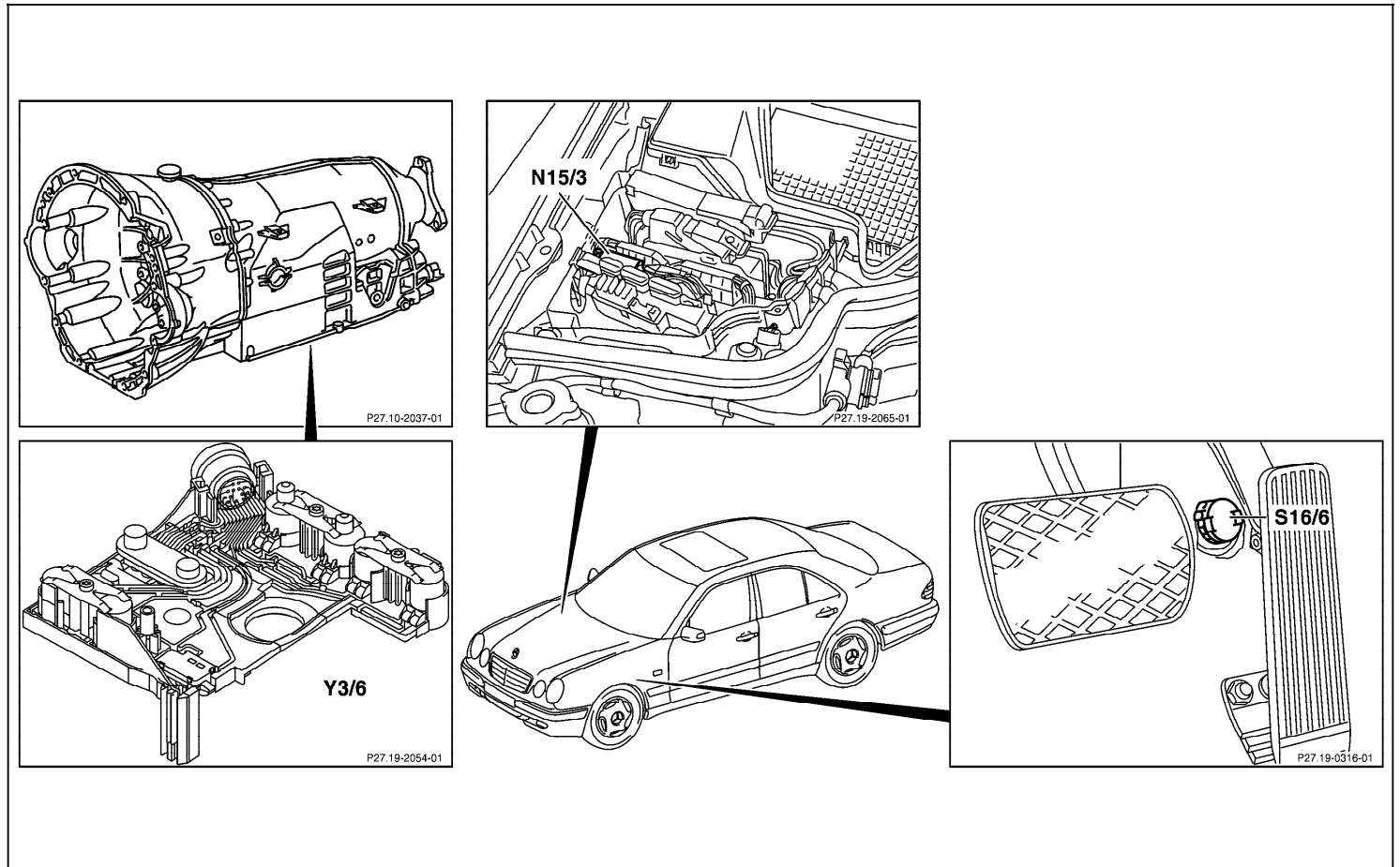
Model 208



P27.19-2059-09

Electrical Test Program – Component Locations

Model 210



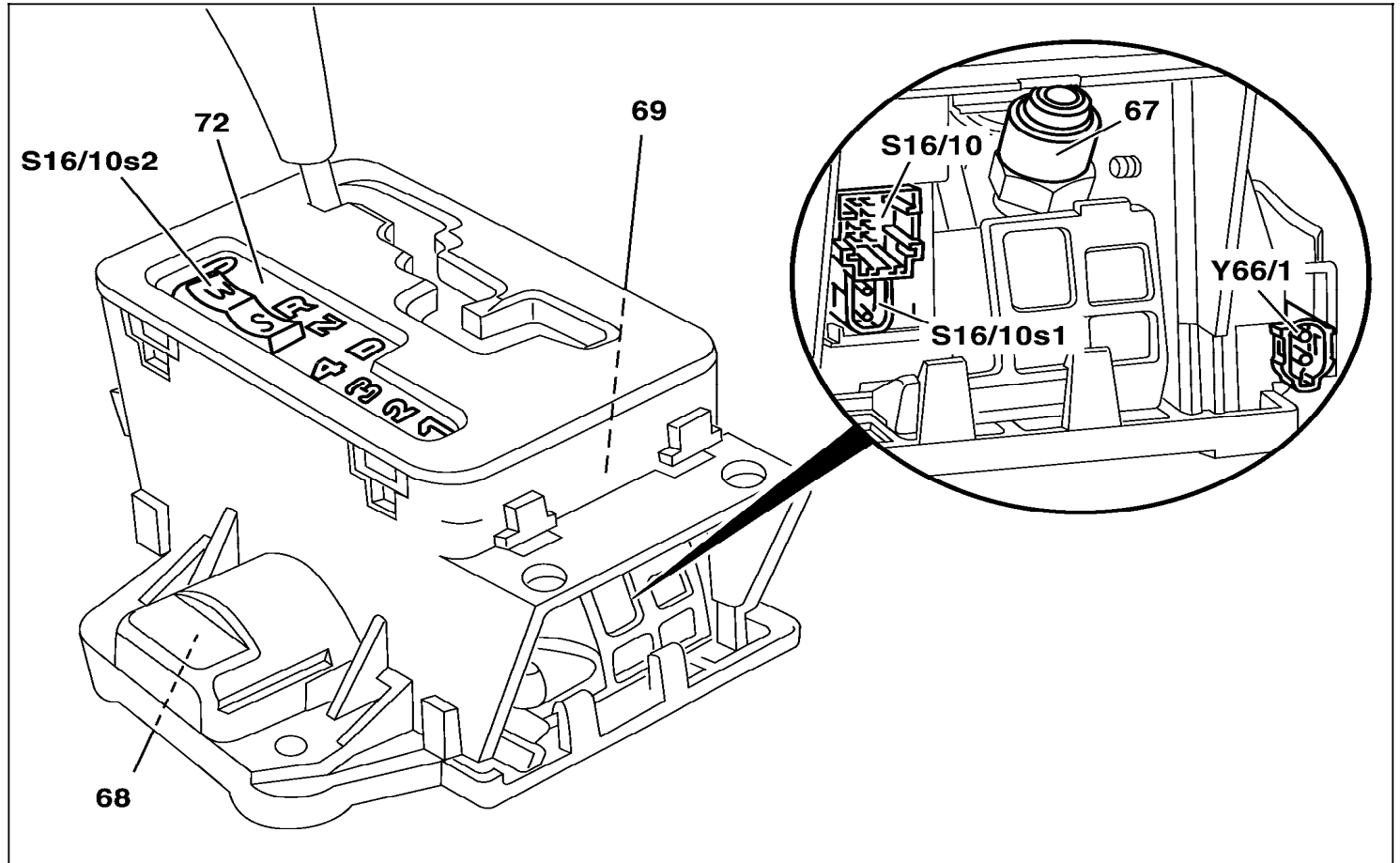
- N15/3 ETC control module
- S16/6 Kick-down switch
- Y3/6 Valve unit (ETC)

P27.19-2060-09

Electrical Test Program – Component Locations

Components of the Center Console Shift Gate

Models 129, 140, 170, 202, 208, 210 without "Touch Shift" shown

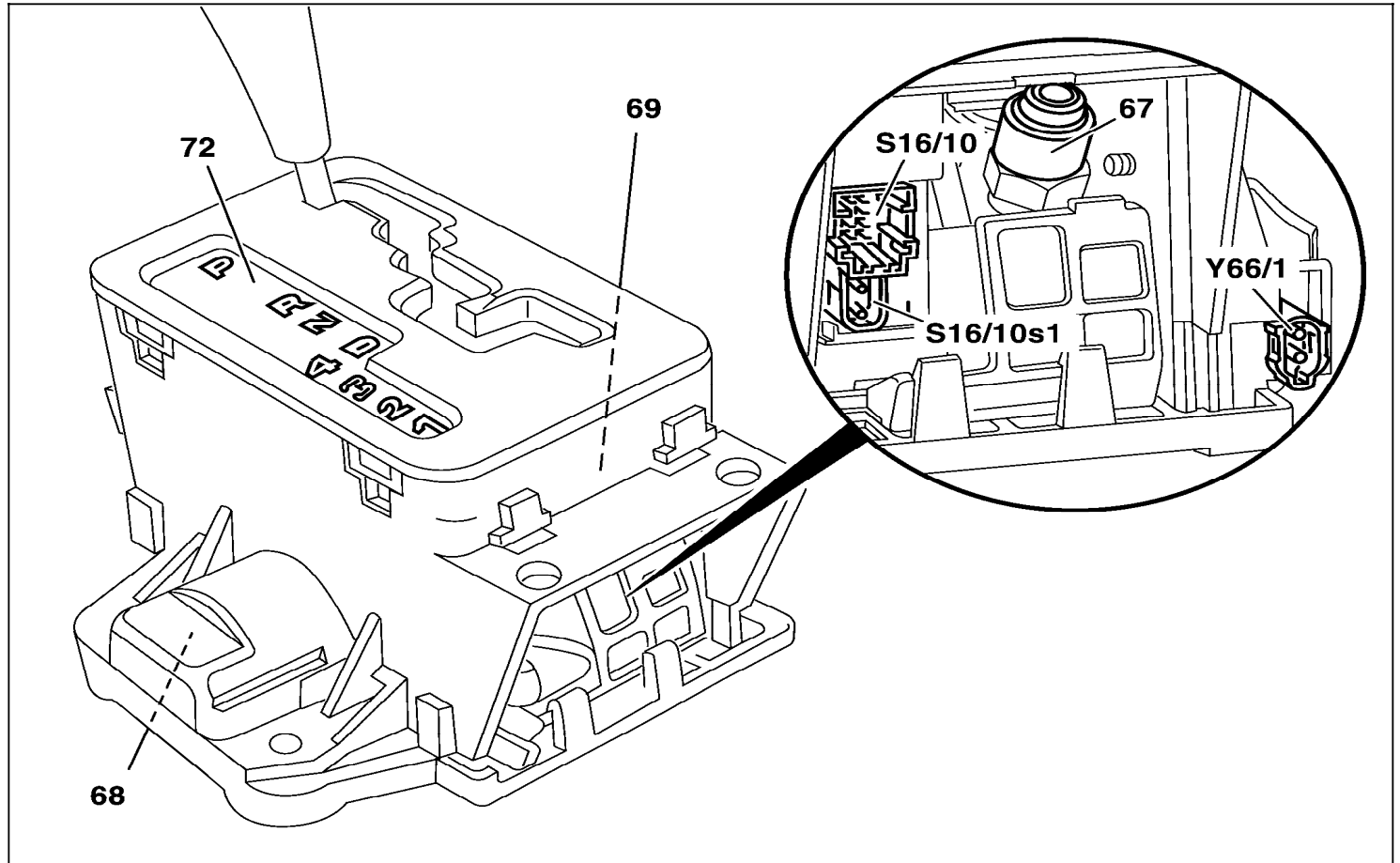


- 67 Shift stop
- 68 De-coupler
- 69 R/P lock
- 72 Position indicator
- S16/10 Transmission range recognition switch
- S16/10s1 Backup lamp switch
- S16/10s2 W/S program switch
- Y66/1 R/P lock valve

P27.60-2074-06

Electrical Test Program – Component Locations

Components of the
Center Console Shift
Gate
Model 163 without
"Touch Shift" shown



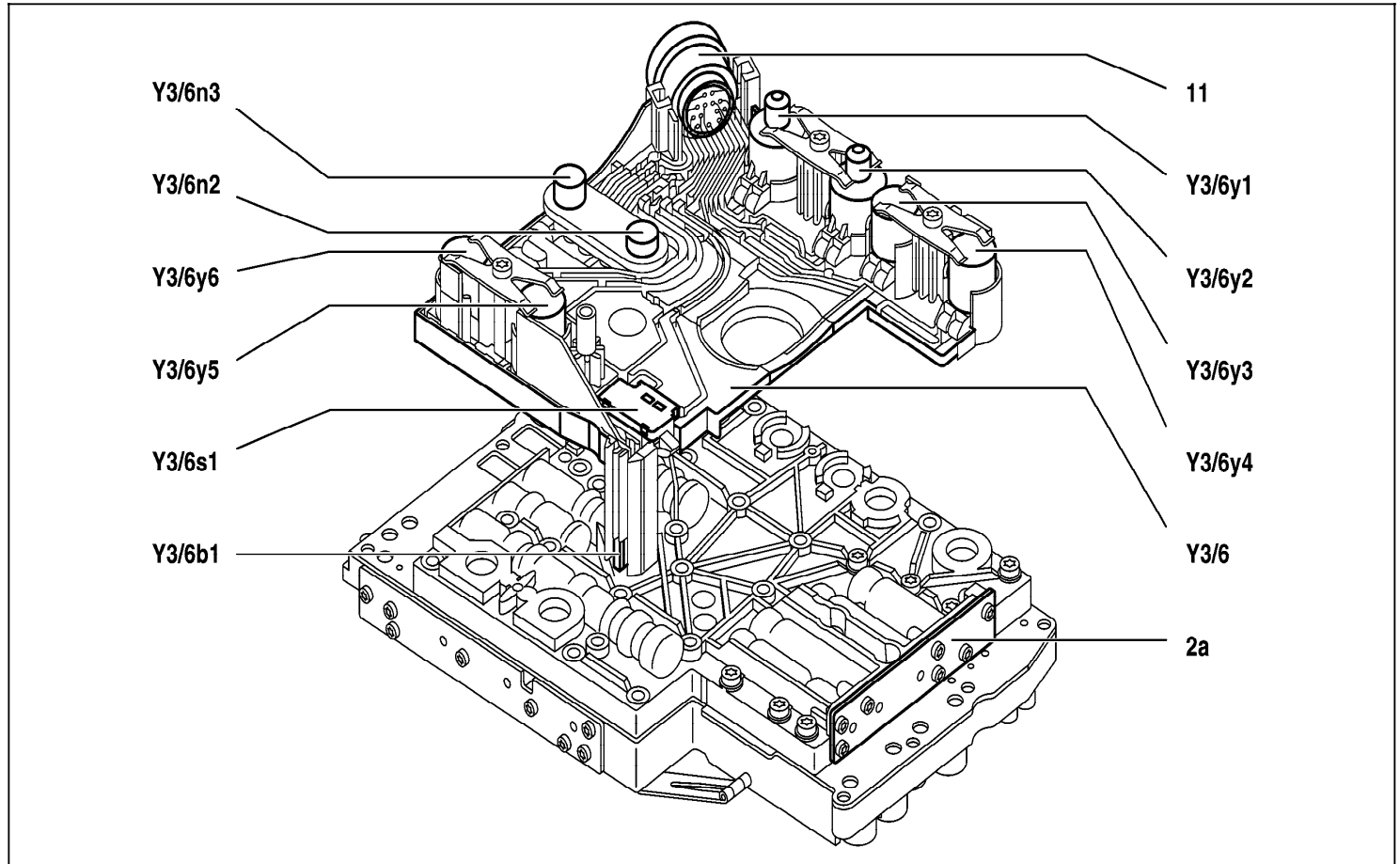
- 67 Shift stop
- 68 De-coupler
- 69 R/P lock
- 72 Position indicator
- S16/10 Transmission range recognition switch
- S16/10s1 Backup lamp switch
- Y66/1 R/P lock valve

P27.60-2076-06

Electrical Test Program – Component Locations

Electrical/Electronic components shown

- 2a Electrical conductor plate
- 11 Harness connector
- Y3/6 Valve unit (ETC)
- Y3/6y1 Modulating pressure regulating solenoid valve
- Y3/6y2 Shift pressure regulating solenoid valve
- Y3/6y3 1-2/4-5 shift solenoid valve
- Y3/6y4 3-4 shift solenoid valve
- Y3/6y5 2-3 shift solenoid valve
- Y3/6y6 PWM solenoid valve (torque convertor lock-up)
- Y3/6n2 RPM sensor 2
- Y3/6n3 RPM sensor 3
- Y3/6s1 Starter lock-out contact
- Y3/6b1 Transmission oil temperature sensor



P27.10-0340-79