

Diagnosis - Function Test

Component Locations

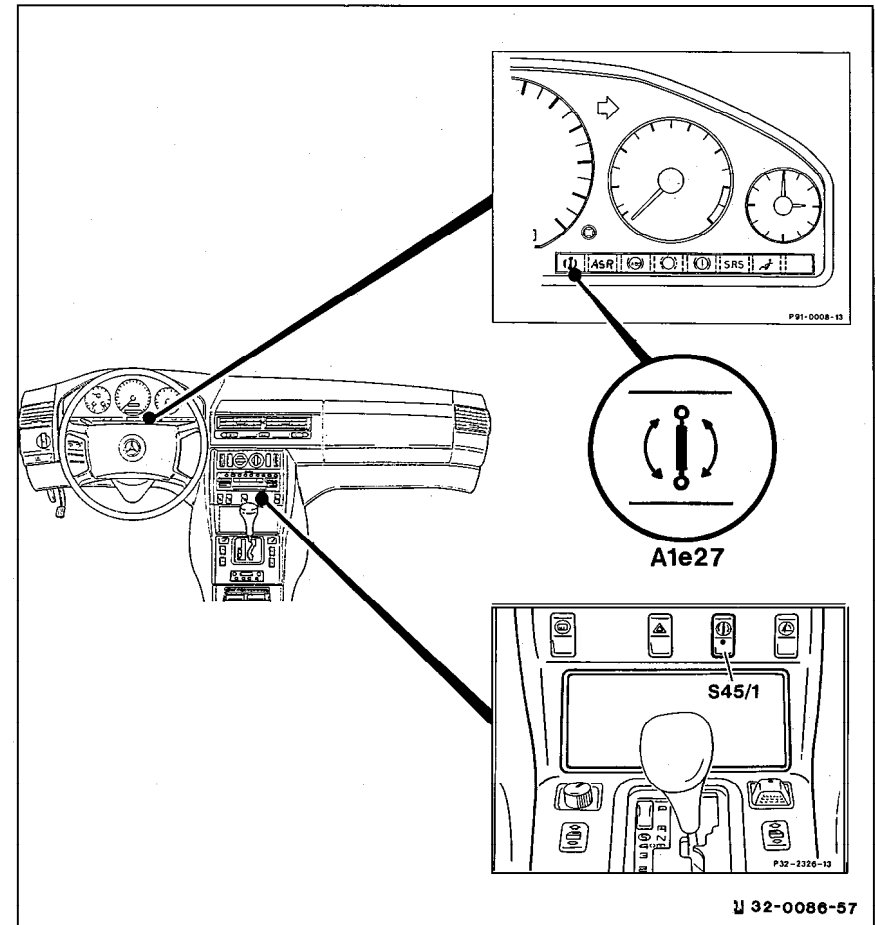


Figure 1

- A1e27 ADS MIL
- S45/1 Comfort/sport switch (ADS)

U32-0086-57

Diagnosis - Function Test

Test step/Test sequence	Test condition	Nominal value	Possible cause/Remedy ¹⁾
⇒ 1.0 ADS MIL (A1e27)	Ignition: ON Engine: at Idle	A1e27 comes on. A1e27 goes out.	Wiring, A1e27 23 ⇒ 6.0, ADS control module (N51) 23⇒ 1.0 Steering angle sensor (N49) not initialized, turn steering wheel from right to left stop, DTC stored in memory, read out DTC 12, Wiring, ADS control module (N51), Circuit 61 23 ⇒ 2.0
⇒ 2.0 <i>Not for U.S.A. Vehicles</i>			
⇒ 3.0 <i>Not for U.S.A. Vehicles</i>			
⇒ 4.0 Comfort/sport switch (S45/1)	Switch (S45/1) set to: Sport Comfort	Indicator lamp in switch (S45/1): ON OFF	Wiring, S45/1 23 ⇒ 11.0.

¹⁾ Observe Preparation for Test, see 22.