

Electrical Test Program - Component Locations

Components in Passenger Compartment

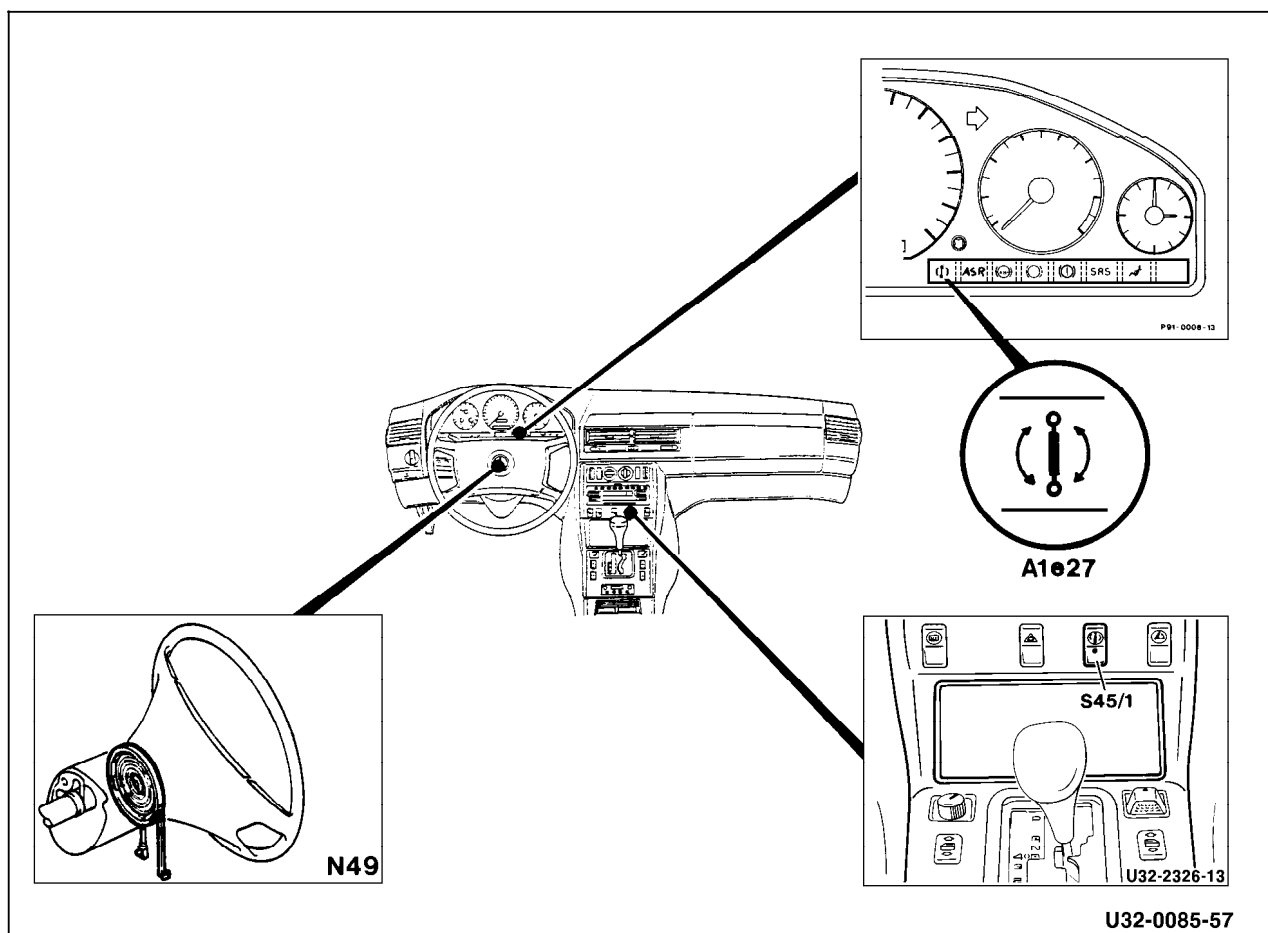


Figure 1

A1e27	ADS MIL
N49	Steering angle sensor
S45/1	Comfort/sport switch

Electrical Test Program - Component Locations

Components on Front Axle and in Engine Compartment

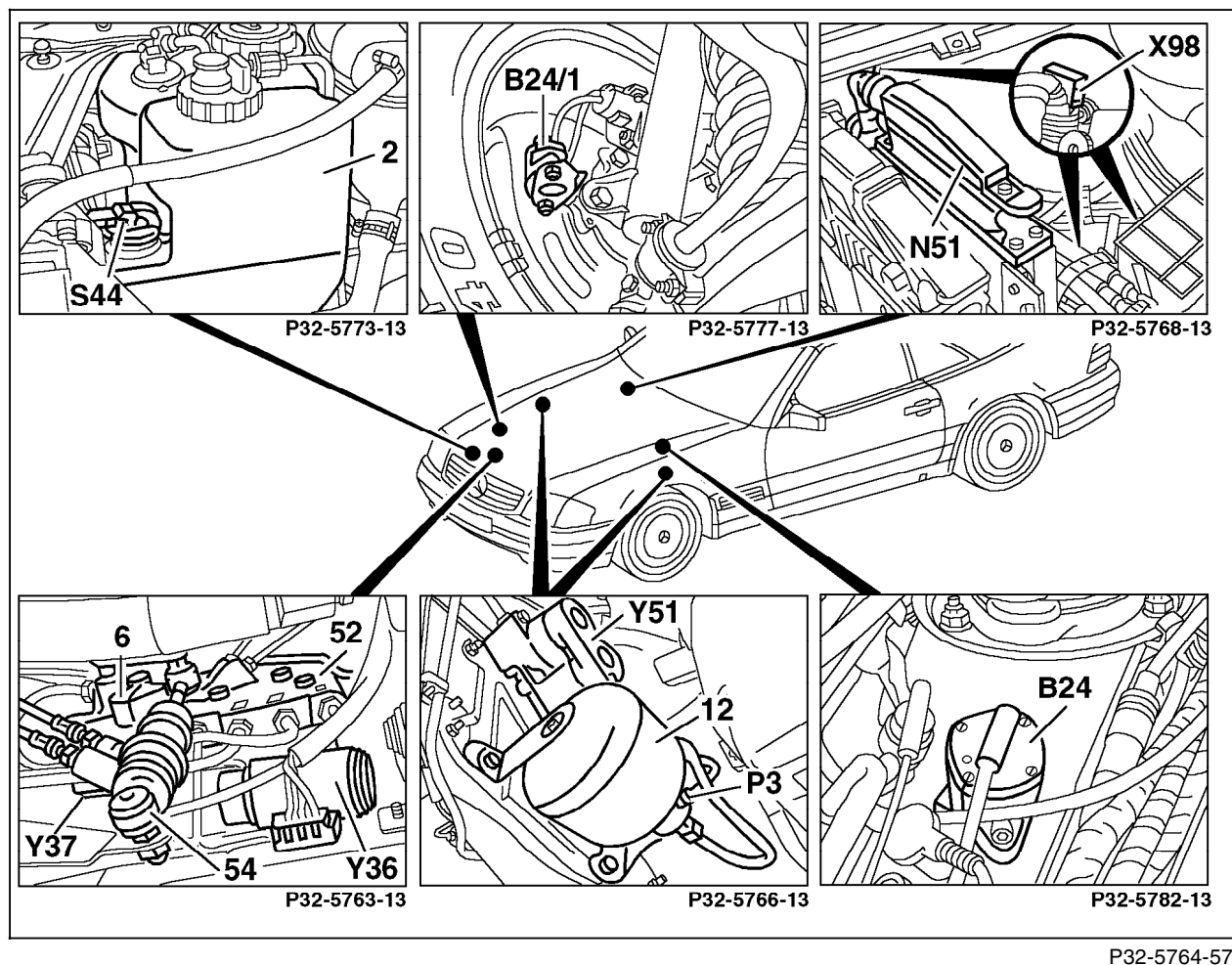
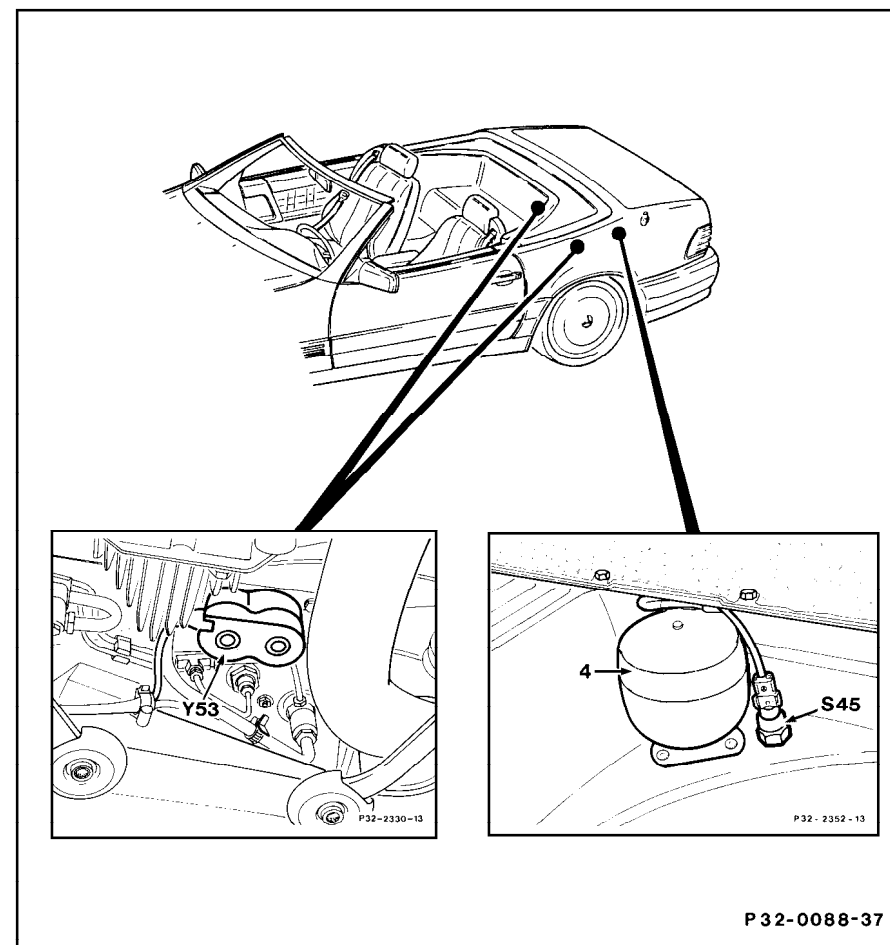


Figure 2

- B24 Body acceleration sensor
- B24/1 Wheel acceleration sensor
- N51 ADS control module
- S44 Oil level switch
- X98 Comfort/sport switchover test connector (2-pole)
- Y51 Left front axle damper valve assembly
- Y52 Right front axle damper valve assembly

Electrical Test Program - Component Locations

Components in Rear of Vehicle



P32-0088-37