

#### Hydraulic Test Program - Hydraulic Oil Pump Test

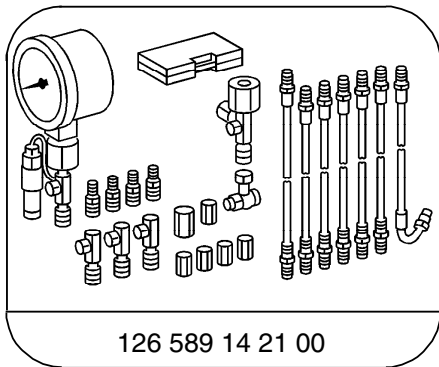
##### Preparation for Test

1. Check oil level in oil reservoir, correct if necessary.
2. Unscrew connecting rods (54, 55) at front and rear leveling valve levers (set levers to neutral position).
3. Depressurize rear axle hydraulic system by slowly opening bleeder screw (3p). Connect drain hose and place into container.
4. Connect test gauge to rear axle leveling valve bleeder screw (S2).
5. Set both leveling valve levers to position "F" (fill).
6. Open pressure supply screw (50a) by maximum of 1 turn.
7. Disconnect return line (T) at oil reservoir (2) and using a suitable hose, hold it in a measuring glass.

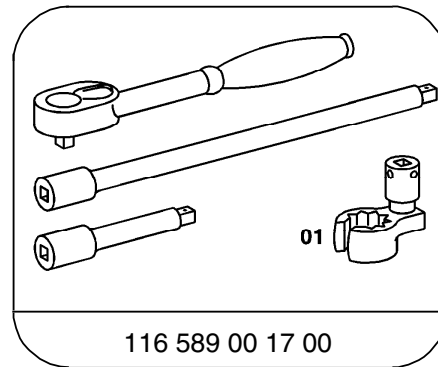


To perform this test, the oil fill quantity must be increased by 0.5 liters. If the oil reservoir was empty, the hydraulic oil pump must first be bled by disconnecting the high pressure flexible hose at the steel line. Run the engine and hold the hose into a container until the oil exits free of bubbles.

##### Special Tools



Tester



Box wrench

#### Hydraulic Test Program - Hydraulic Oil Pump Test

**Component Locations**  
Model 129

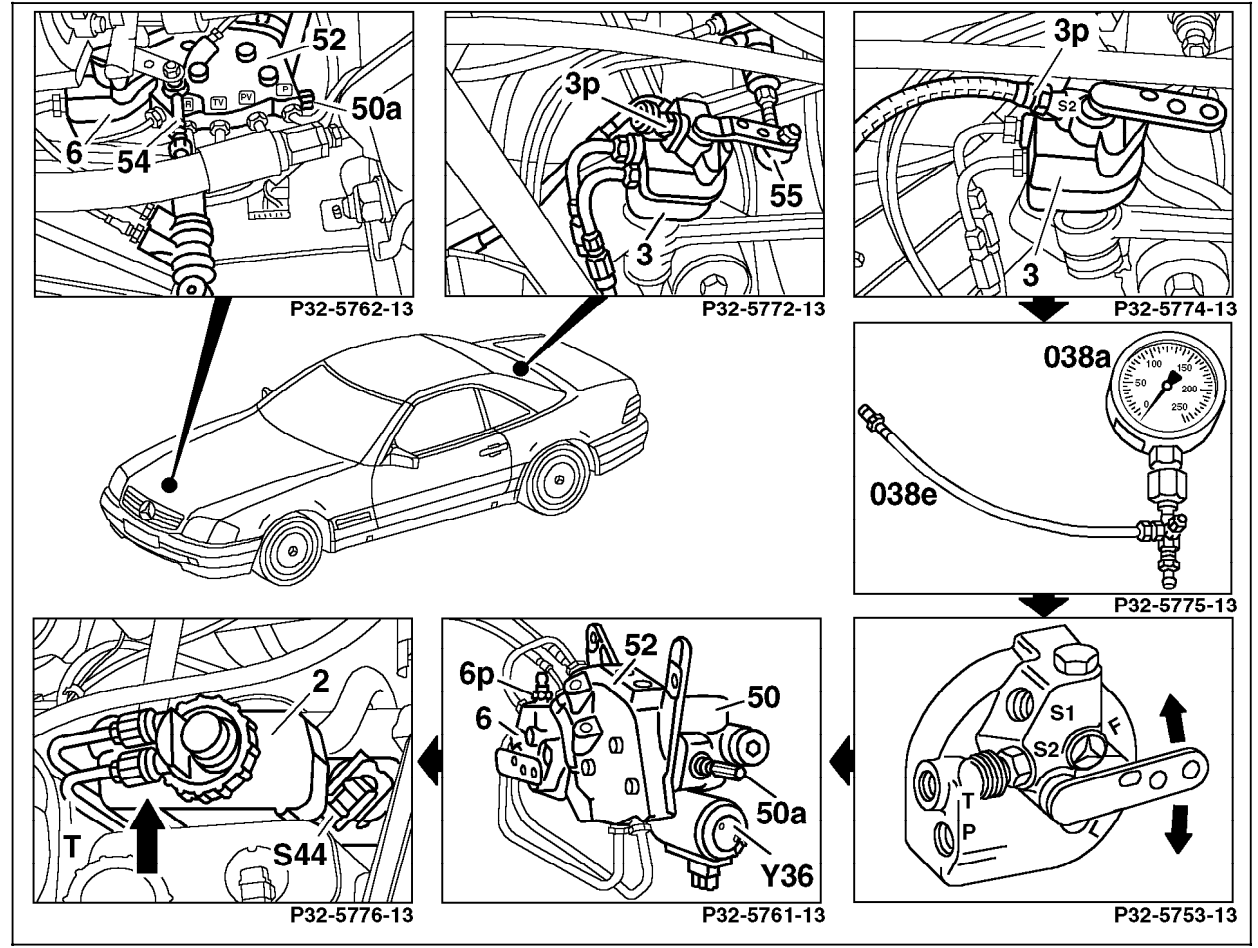


Figure 1

- 2 Hydraulic oil reservoir
- 3 Rear axle leveling valve
- 3p Bleeder screw
- 6 Front axle leveling valve
- 6p Bleeder screw
- 50a Pressure supply screw
- 54 Front axle connecting rod
- 55 Rear axle connecting rod
- T Return line - oil reservoir distributor/valve unit

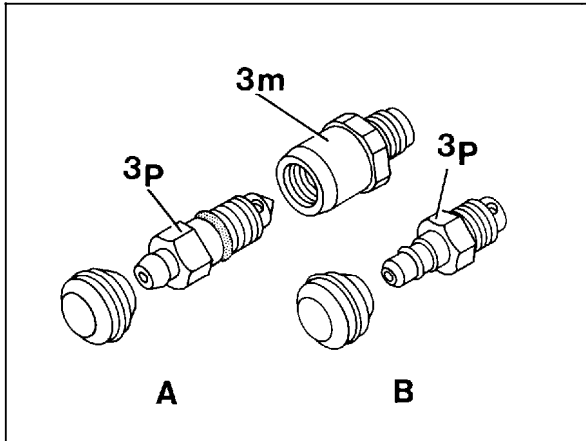
P32-5756-57

#### Hydraulic Test Program - Hydraulic Oil Pump Test

Test step	Test scope	Test connection	Test condition	Nominal value	Possible cause/Remedy <sup>1)</sup>
⇒ 1.0	<b>Delivery pressure</b>  <b>⚠ WARNING!</b> High pressure	⚡ 250 bar Connect test gague to rear axle leveling valve connection S2	Engine: <b>at Idle</b> Set leveling valve lever(s) to position "F" (fill). Observe test gauge needle until pressure no longer increases.	> 133 bar  Delivery capacity at idle > 0.2 l/min.	Delivery pressure < 133 bar, Delivery capacity < 0.2 l/min: Replace hydraulic oil pressure pump (SMS, Job No. 32-640)  Delivery pressure < 133 bar, Delivery capacity > 0.2 l/min: see 34

<sup>1)</sup> Observe Preparation for Test, see 22.

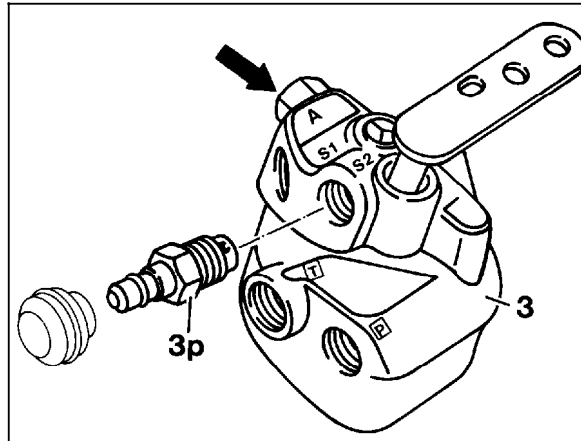
#### Hydraulic Test Program - Hydraulic Oil Pump Test



P32-5561-13

Figure 2

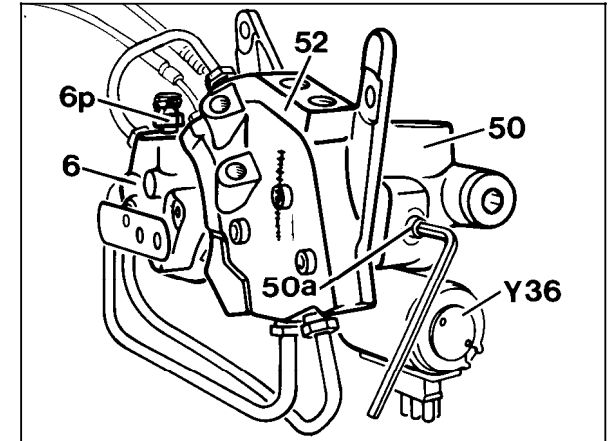
- A**     **Version → 09/92**  
 3m Connection fitting  
 3p Bleeder screw
- B**     **Version 10/92 →**  
 3p Bleeder screw



P32-5568-13

Figure 3

- Version 10/92 →**  
 3 Rear axle leveling valve  
 3p Bleeder screw  
 Arrow Closing screw



P32-2333-13a

Figure 4

- Version → 08/90**  
 50a Pressure supply screw