

Hydraulic Test Program - Leveling Valve Function Test

Preparation for Test

1. Check oil level in oil reservoir, correct if necessary.
2. Unscrew connecting rods (54, 55) at leveling valve levers (set lever to neutral position).



When the system is empty (i.e.: after repair work) the pressure supply screw (50a) must be loosened by approximately one turn to allow both leveling valves to fill.

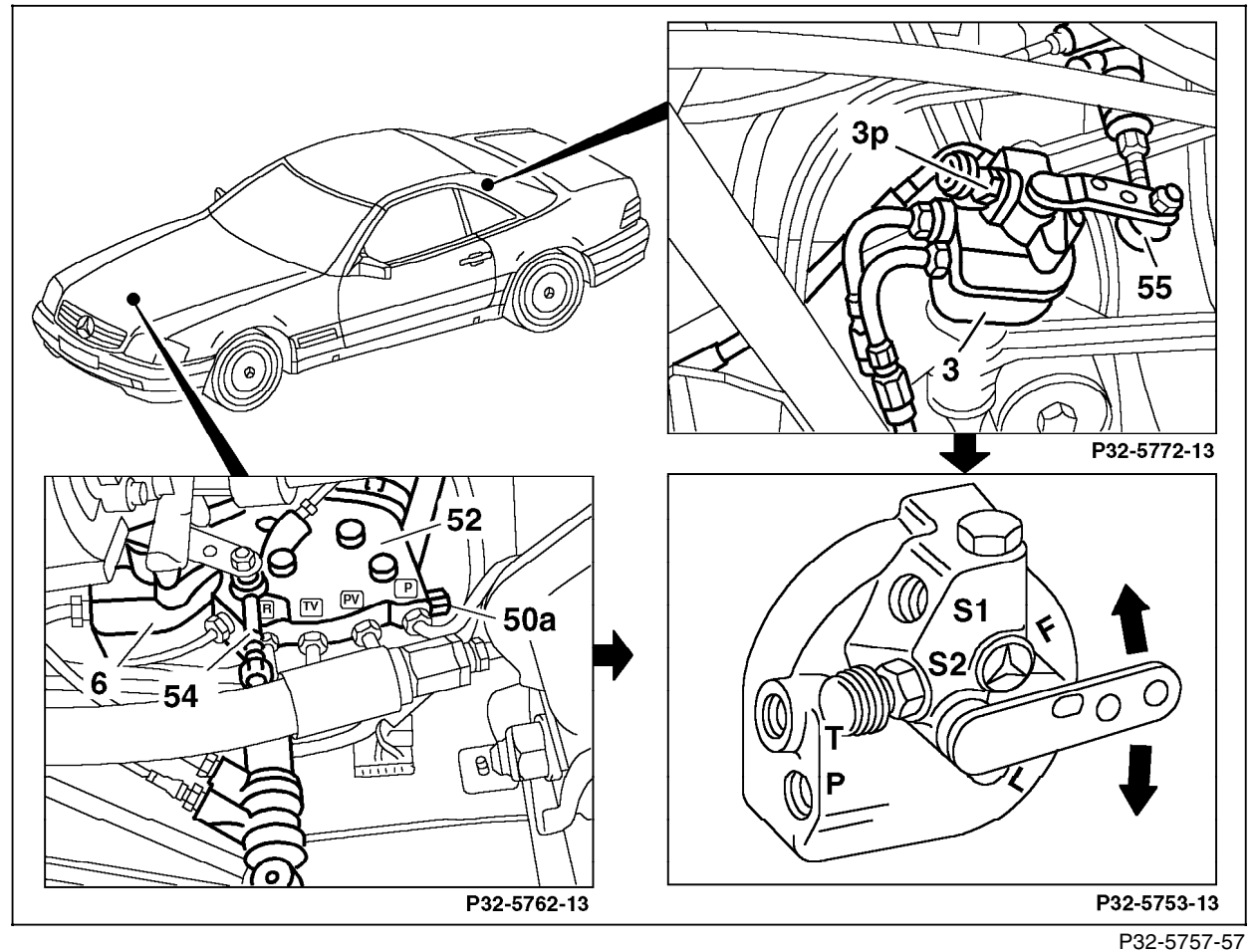


Figure 1

- 3 Rear axle leveling valve
- 6 Front axle leveling valve
- 50a Pressure supply screw
- 54 Front axle connecting rod
- 55 Rear axle connecting rod

Hydraulic Test Program - Leveling Valve Function Test

Test step	Test scope	Test connection	Test condition	Nominal value	Possible cause/Remedy
⇒ 1.0	Control function Leveling valve	—	Engine: at Idle Set leveling valve lever to position "F" (fill).	Vehicle must raise at respective axle.	34, 35