

Hydraulic Test Program – Hydraulic Oil Pump Test

Preparation for Test

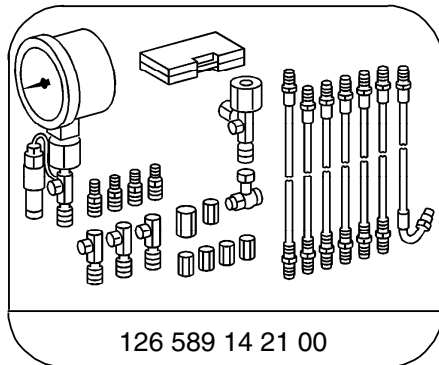
1. Check oil level in oil reservoir, correct if necessary.
2. **Model 129**
Unscrew connecting rods (54, 55) at front and rear leveling valve levers (set levers to neutral position).
- Model 140**
Unscrew connecting rod at leveling valve lever (3a).
3. Depressurize rear axle hydraulic system by slowly opening bleeder screw (3p). Connect drain hose and place into container.
4. Connect test gauge (038a) to rear axle leveling valve bleeder screw (S2).

5. **Model 129**
Set both leveling valve levers to position “F” (fill).
6. **Model 129**
Open pressure supply screw (50a) by maximum of 1 turn.
7. Disconnect return line (T) at oil reservoir (2) and using a suitable hose, hold it in a measuring glass.

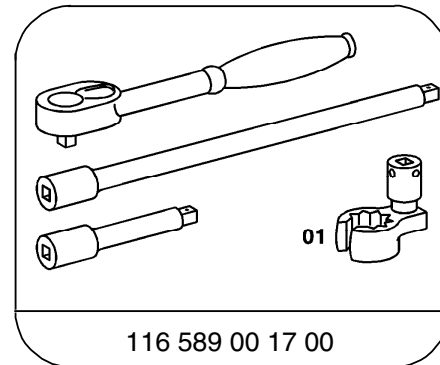


To perform this test, the oil fill quantity must be increased by 0.5 liters. If the oil reservoir was empty, the hydraulic oil pump must first be bled by disconnecting the high pressure flexible hose at the steel line. Run the engine and hold the hose into a container until the oil exits free of bubbles.

Special Tools



Tester



Box wrench

Hydraulic Test Program – Hydraulic Oil Pump Test

Model 129

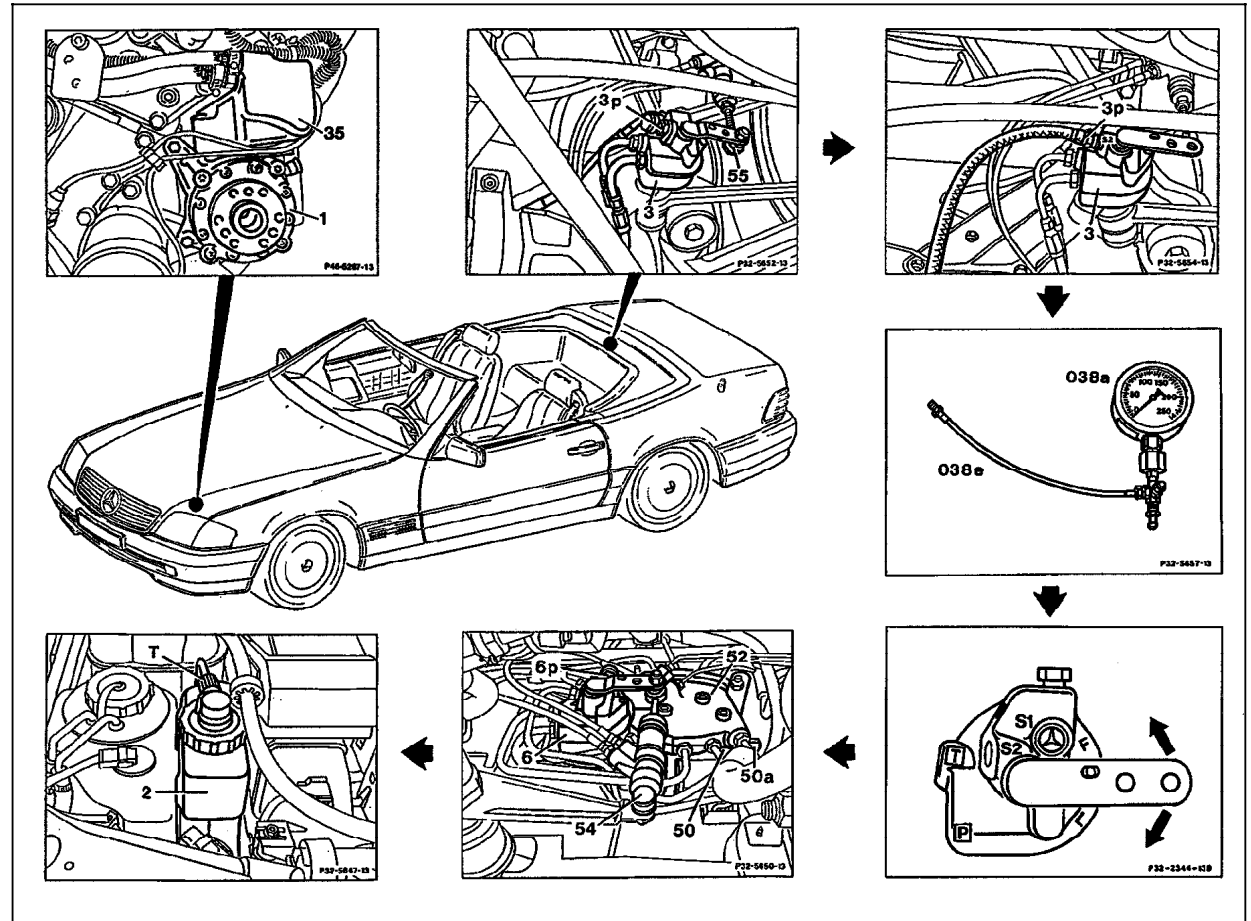


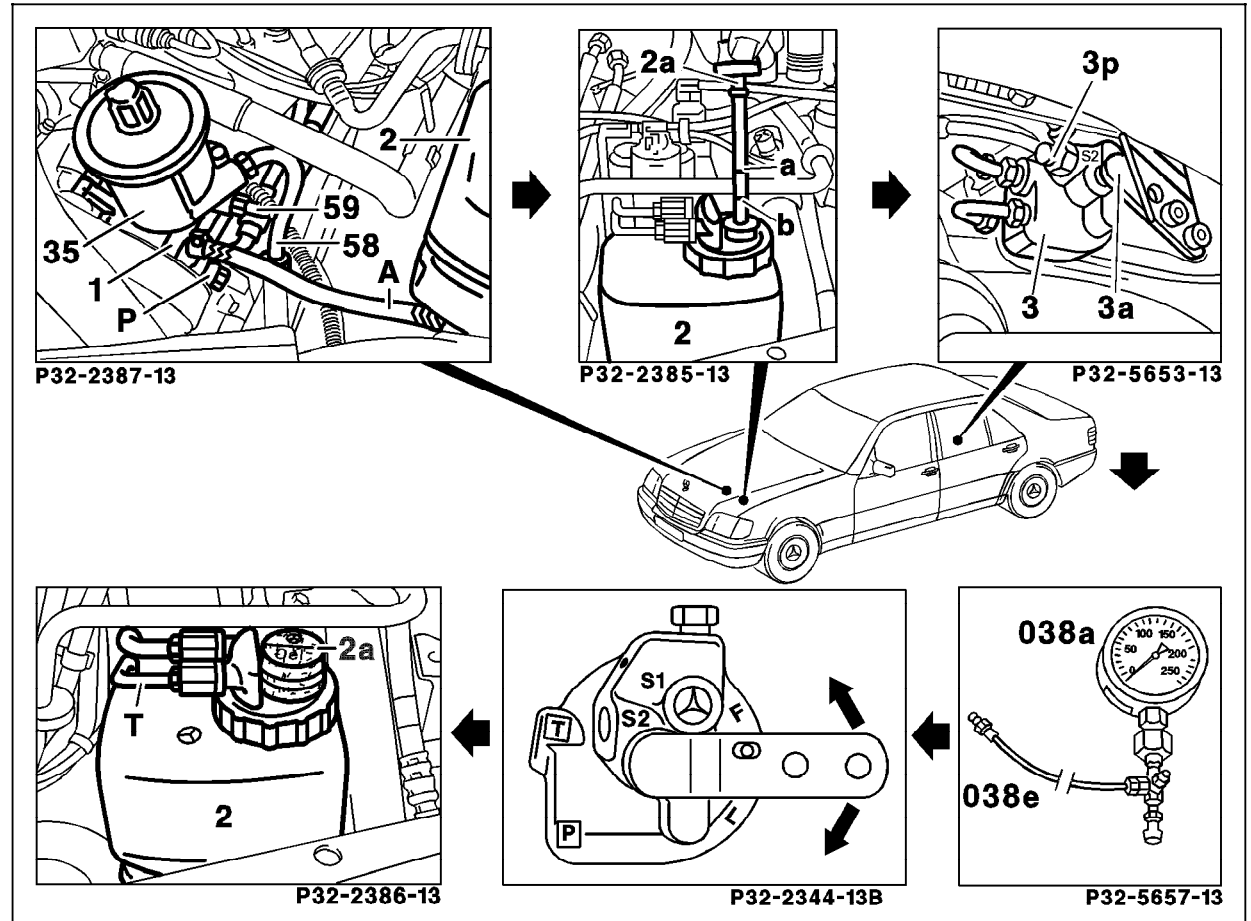
Figure 1

- 1 Hydraulic oil pump
- 2 Hydraulic oil reservoir
- 3 Rear axle leveling valve
- 3p Bleeder screw
- 6 Front axle leveling valve
- 6p Bleeder screw
- 50a Pressure supply screw
- 54 Front axle connecting rod
- 55 Rear axle connecting rod
- T Return line - oil reservoir distributor/valve unit

P32-5635-57

Hydraulic Test Program – Hydraulic Oil Pump Test

Model 140





P32-5636-57

Figure 2

- 1 Hydraulic oil pump
- 2 Hydraulic oil reservoir
- 3 Rear axle leveling valve
- 3a Connecting lever
- 3p Bleeder screw
- 7 Rear axle connecting rod

Hydraulic Test Program – Hydraulic Oil Pump Test

Test step	Test scope	Test connection	Test condition	Nominal value	Possible cause/Remedy ¹⁾
⇒ 1.0	Delivery pressure  WARNING! High pressure	 250 bar Connect test gauge to rear axle leveling valve connection S2	Engine: at Idle Set leveling valve lever(s) to position “F” (fill). Observe test gauge needle until pressure no longer increases.	> 133 bar Delivery capacity at idle > 0.2 l/min.	Delivery pressure < 133 bar, Delivery capacity < 0.2 l/min: Replace hydraulic oil pressure pump (SMS, Job No. 32-640) Delivery pressure < 133 bar, Delivery capacity > 0.2 l/min: see 34

¹⁾ Observe Preparation for Test, see 22.