

Hydraulic Test Program – Leveling Valve Function Test

Preparation for Test

Model 129

1. Check oil level in oil reservoir, correct if necessary.
2. Unscrew connecting rods (54, 55) at leveling valve levers (set lever to neutral position).

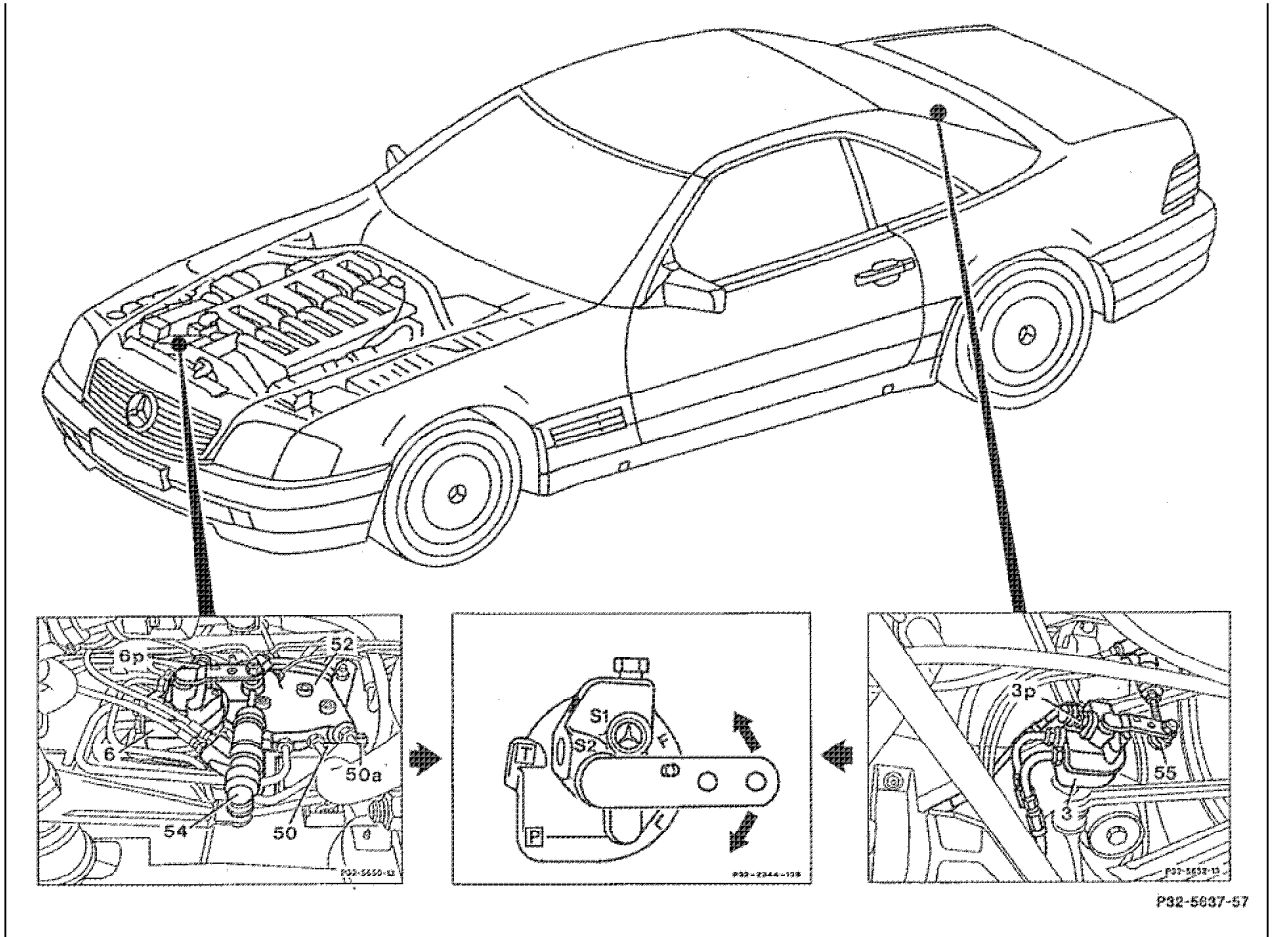


Figure 1

- 3 Rear axle leveling valve
- 6 Front axle leveling valve
- 54 Front axle connecting rod
- 55 Rear axle connecting rod

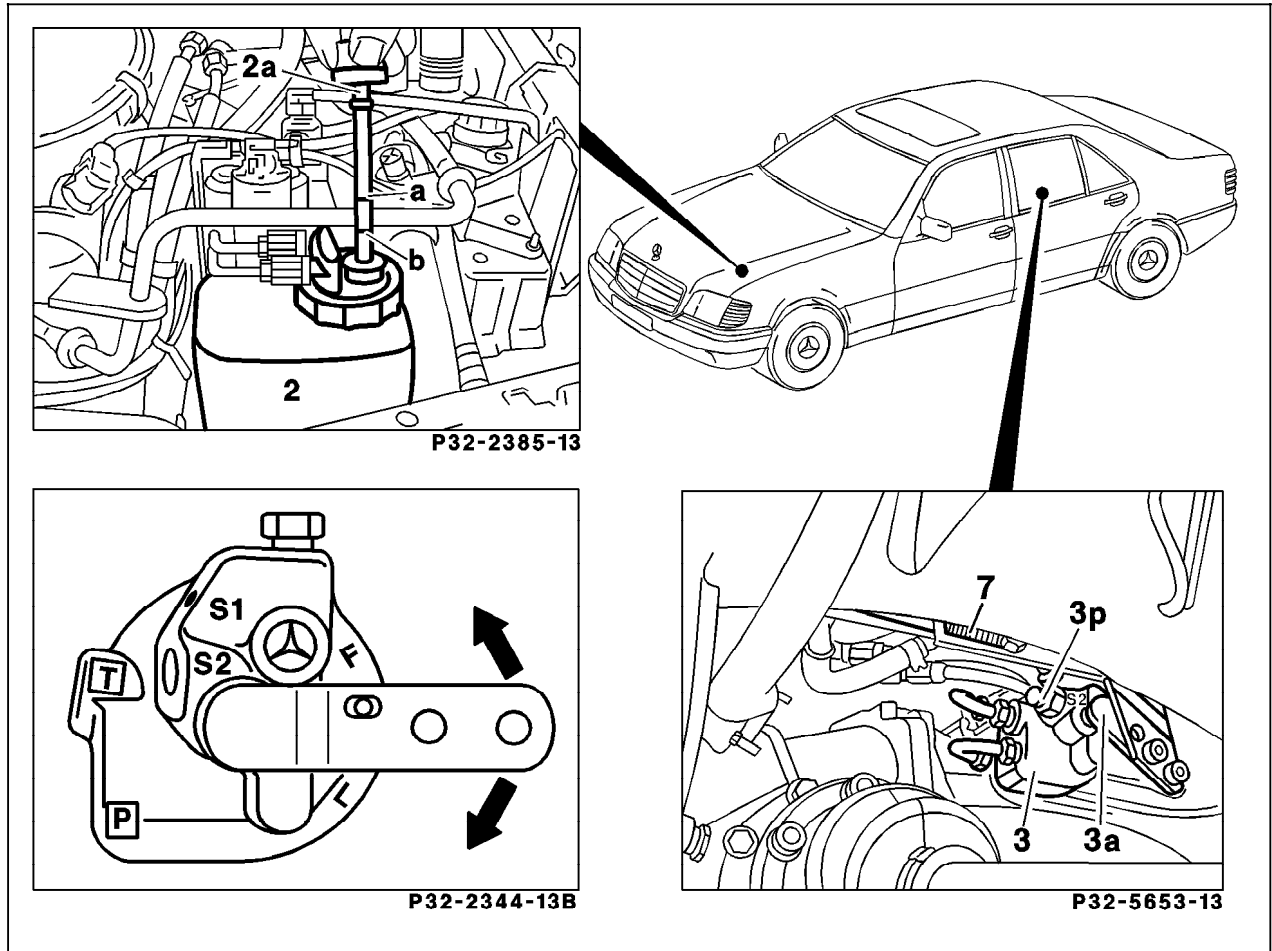
P32-5637-57

Hydraulic Test Program – Leveling Valve Function Test

Preparation for Test

Model 140

1. Check oil level in oil reservoir, correct if necessary.
2. Unscrew connecting rod at leveling valve lever (3a) (set lever to neutral position).



P32-2385-13

P32-2344-13B

P32-5653-13

P32-5638-57

Figure 2

- 3 Rear axle leveling valve
- 3a Leveling valve lever
- 7 Connecting rod

Hydraulic Test Program – Leveling Valve Function Test

Test step	Test scope	Test connection	Test condition	Nominal value	Possible cause/Remedy
⇒ 1.0	Control function Leveling valve	—	Engine: at Idle Set leveling valve lever to position “F” (fill).	Vehicle must raise at respective axle.	34, Model 129 35