

3.3 Adaptive Damping System (ADS II)

Hydraulic Test Program - Hydraulic Oil Pump Test

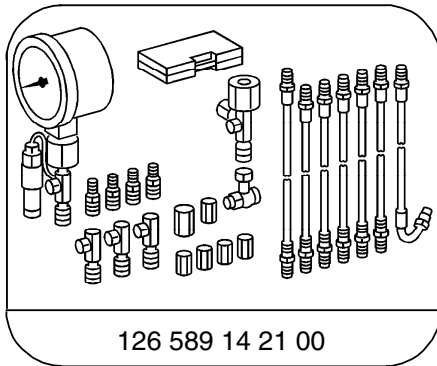
Preparation for Test

1. Check oil level in oil reservoir, correct if necessary.
2. Unscrew connecting rod at leveling valve lever (3a).
3. Depressurize rear axle hydraulic system by slowly opening bleeder screw (3p), connect drain hose and place into container, remove bleeder screw (3p).
4. Connect test gauge (038a, 038e) to rear axle leveling valve bleeder connection (S2).
5. Set both leveling valve levers to position "F" (fill).
6. Disconnect return line (T) at oil reservoir (2) and using a suitable hose, hold it in a measuring glass.

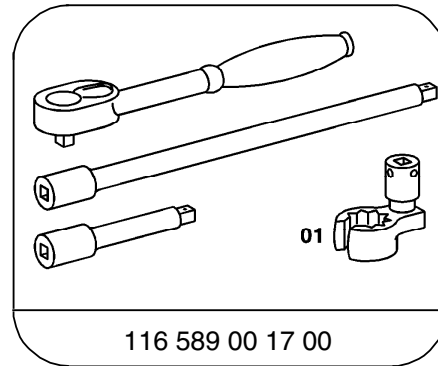


To perform this test, the oil fill quantity must be increased by 0.5 liters. If the oil reservoir was empty, the hydraulic oil pump must first be bled by disconnecting the high pressure flexible hose at the steel line. Run the engine and hold the hose into a container until the oil exits free of bubbles.

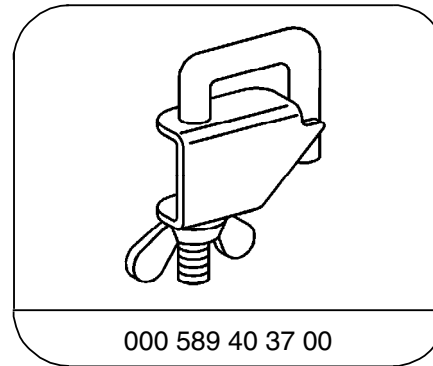
Special Tools



Tester



Box wrench



Clamp

3.3 Adaptive Damping System (ADS II)

Hydraulic Test Program - Hydraulic Oil Pump Test

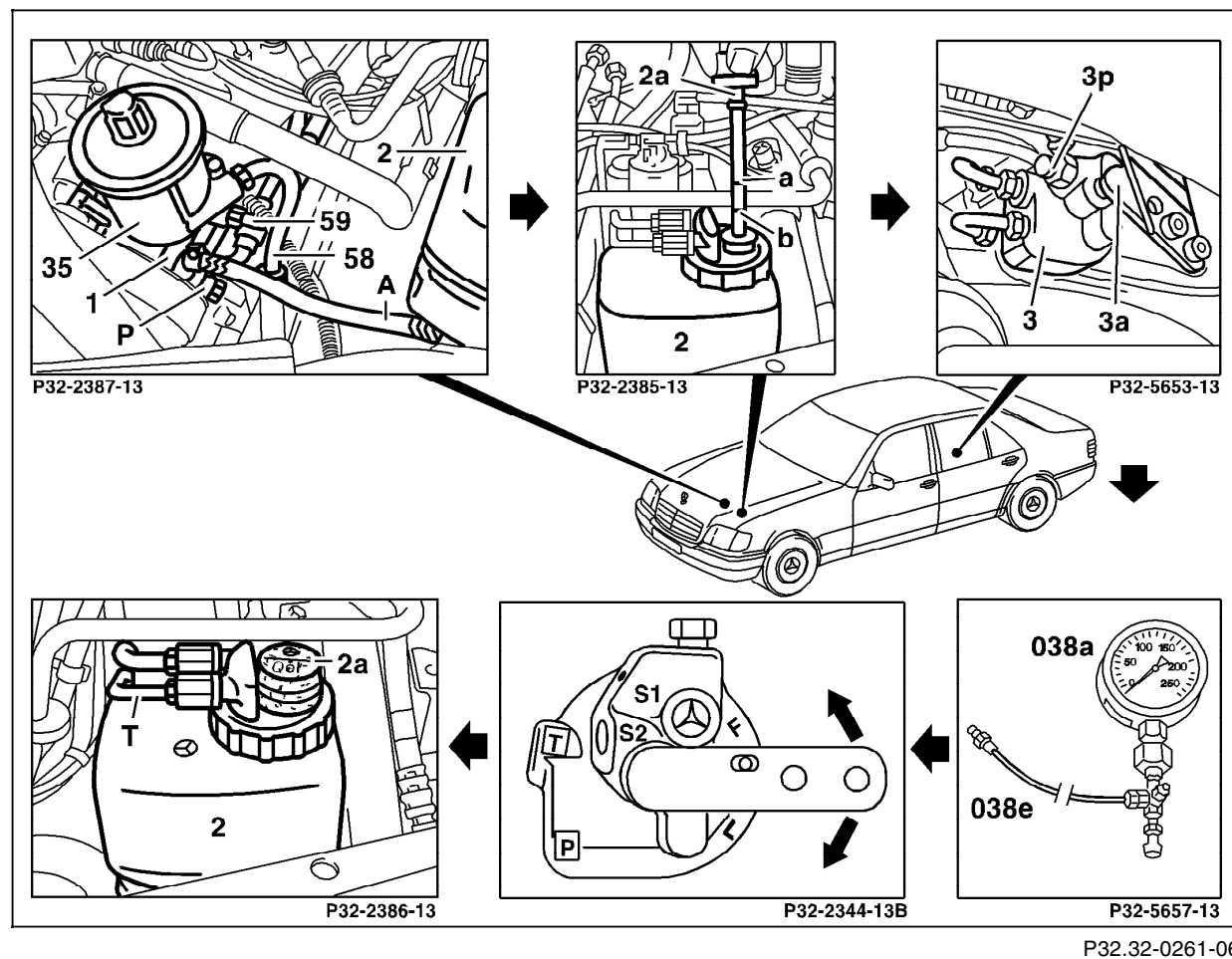




Figure 1

- 1 Hydraulic oil pump
- 2 Hydraulic oil reservoir
- 3 Leveling valve
- 3a Connecting lever
- 3p Bleeder screw
- 038a Test gauge
- T Retrun line from leveling valve

3.3 Adaptive Damping System (ADS II)

Hydraulic Test Program - Hydraulic Oil Pump Test

⇒		Test scope	Test connection	Test condition	Nominal value	Possible cause/Remedy
1.0		Delivery pressure  WARNING! High pressure	 250 bar Connect test gauge to rear axle leveling valve connection S2	Engine: at Idle Set leveling valve lever(s) to position "F" (fill). Observe test gauge needle until pressure no longer increases.	> 120 bar Delivery capacity at idle > 0.2 l/min.	Delivery pressure < 120 bar, Delivery capacity < 0.2 l/min: Replace hydraulic oil pressure pump Delivery pressure < 120 bar, Delivery capacity > 0.2 l/min: Replace rear axle leveling valve. Delivery pressure > 153 bar, Replace rear axle leveling valve.