

3.3 Adaptive Damping System (ADS II)

Hydraulic Test Program - Leveling Valve Function Test

Function Test

Model 140

1. Check oil level in oil reservoir, correct if necessary.
2. Unscrew connecting rod at leveling valve lever (3a) (set lever to neutral position).

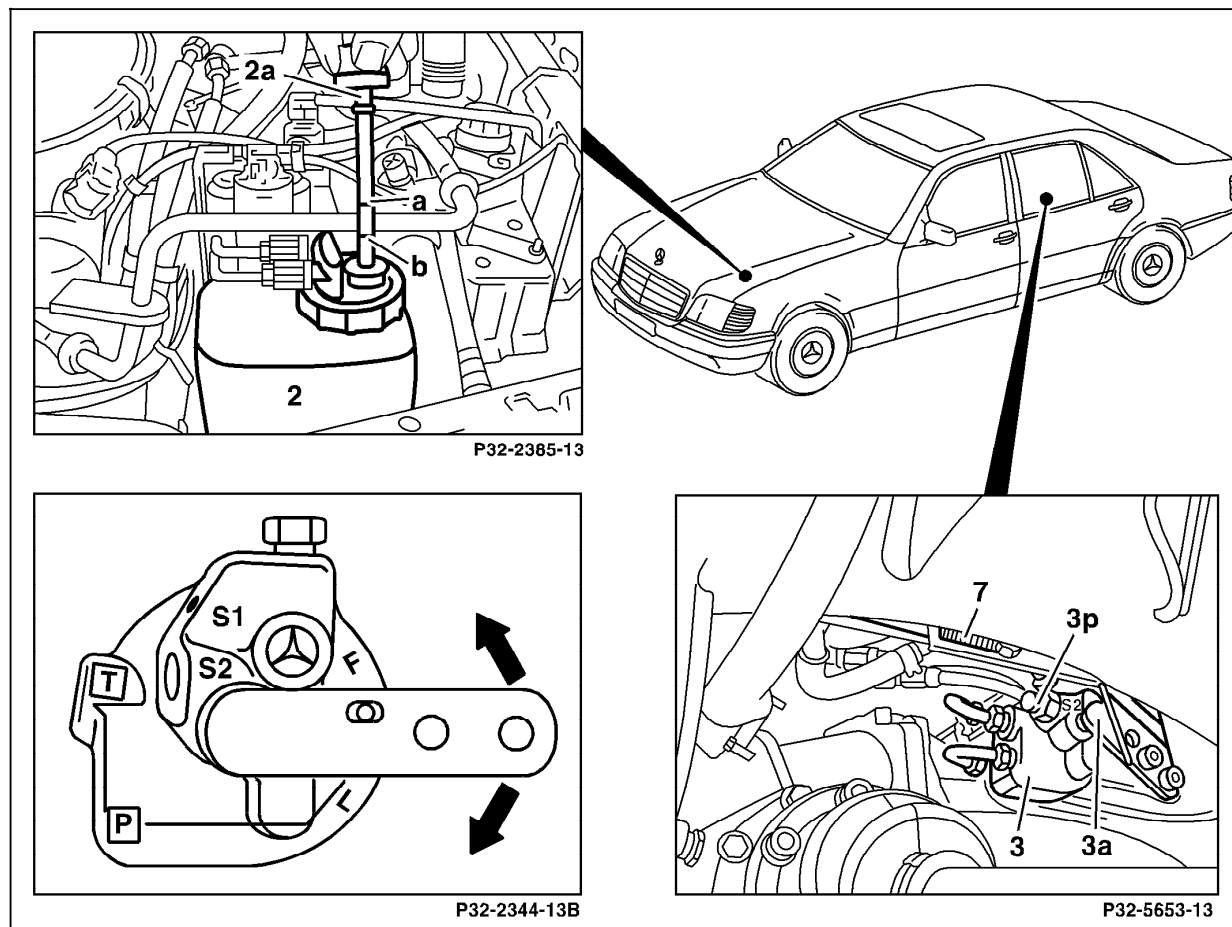


Figure 1

- 3 Leveling valve
3a Leveling valve lever
7 Connecting rod

P32.32-0263-06

3.3 Adaptive Damping System (ADS II)

Hydraulic Test Program - Leveling Valve Function Test

⇒		Test scope	Test connection	Test condition	Nominal value	Possible cause/Remedy
1.0		Leveling valve Control function		Engine: at Idle Set leveling valve lever to position "F" (fill).	Vehicle must raise at rear axle.	34