

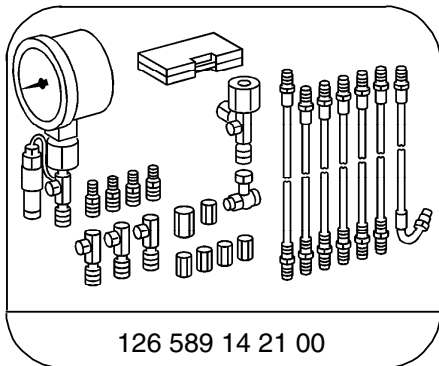
3.3 Adaptive Damping System (ADS II)

Hydraulic Test Program - Leveling Valve Pressure Test

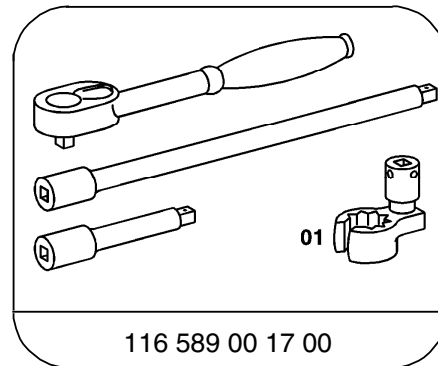
Preparation for Test

1. Check oil level in oil reservoir, correct if necessary.
2. Unscrew connecting rod at leveling valve levers (set levers to neutral position).
3. Depressurize hydraulic system by slowly opening bleeder screw (3p), connect drain hose and place into container, remove bleeder screw (3p).
4. Connect test gauge to leveling valve connection (S2).

Special Tools



Tester



Box wrench

3.3 Adaptive Damping System (ADS II)

Hydraulic Test Program - Leveling Valve Pressure Test

Pressure Test Model 140

1. Check oil level in oil reservoir, correct if necessary.
2. Unscrew connecting rod at leveling valve lever (3a) (set lever to neutral position).

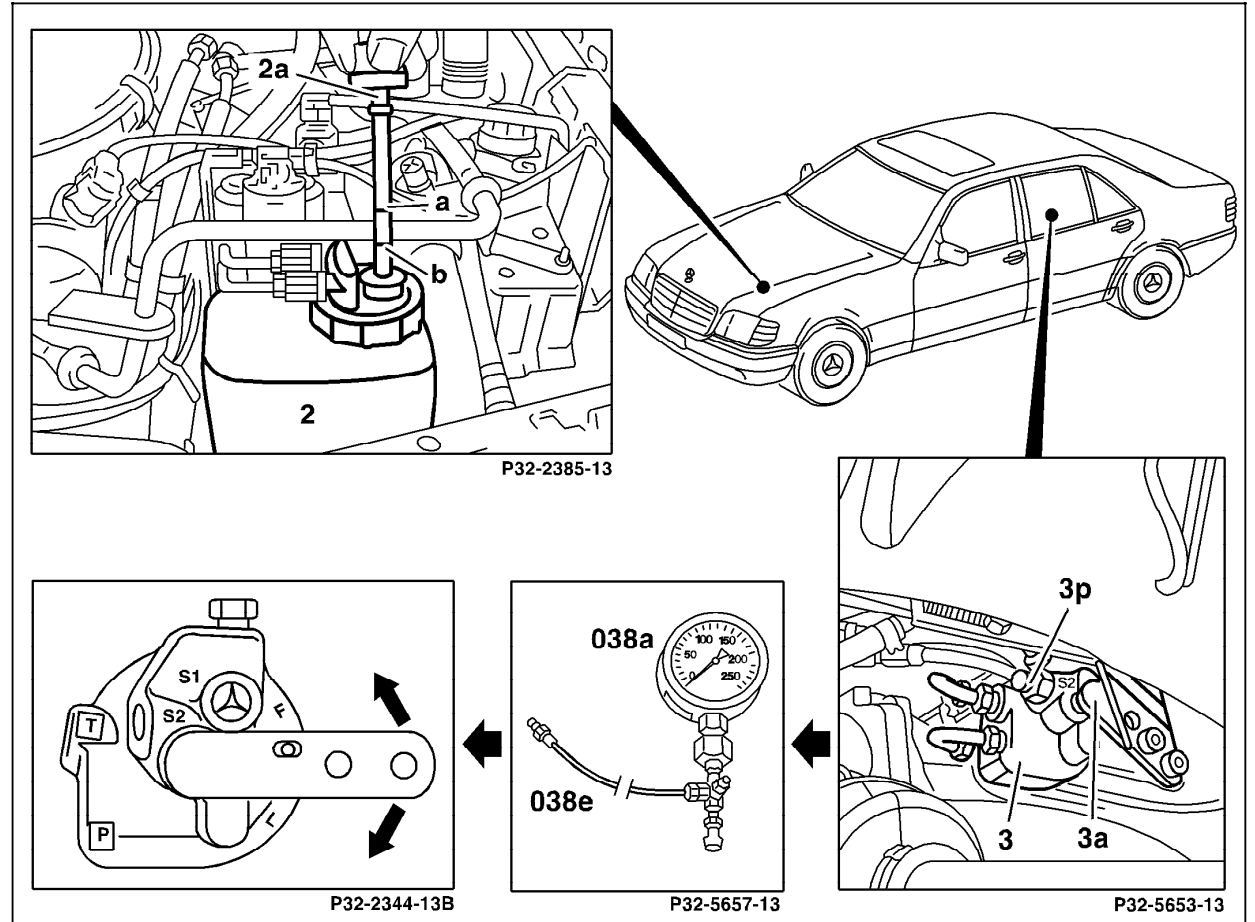





Figure 2

- 2 Oil reservoir
- 3 Leveling valve
- 3a Leveling valve lever
- 3p Oil drain screw

P32.32-0264-06

3.3 Adaptive Damping System (ADS II)

Hydraulic Test Program - Leveling Valve Pressure Test

⇒		Test scope	Test connection	Test condition	Nominal value	Possible cause/Remedy
1.0		Opening pressure of relief valve  WARNING! High Pressure	 250 Connect test gauge to S2.	Engine: at Idle Set leveling valve lever to "F" (fill).	120 – 153 bar	> 153 bar Replace leveling valve. < 120 bar Replace hydraulic oil pump, see 32
2.0		Overflow valve function	 250 Connect test gauge to S2.	Engine: at Idle Set leveling valve lever to "F" (fill) until gauge indicates approximately 80 bar. Set leveling valve lever to "L" (empty)	30 – 36 bar	Rear axle, Replace leveling valve.