

Hydraulic Test Program - Preparation for Test

Preparation for Test

1. Ignition: **OFF**
2. Check oil level in oil reservoir, correct if necessary.
3. Disconnect ASD control module (N30/2).
4. Remove plastic cover.
5. **ASD with pressure reservoir (→ 05/93)**
Release system pressure by loosening pressure release screw approximately 1/4 turn.
Connect pressure gauge to:
 - Vehicles up to VIN A004652, test connection (M) on hydraulic unit.
 - Vehicles as of VIN A004653, pressure release screw (83c) on hydraulic unit.

6. **ASD without pressure reservoir (06/93 →)**
Connect pressure gauge to ring cylinder according to connection diagram.

Note:

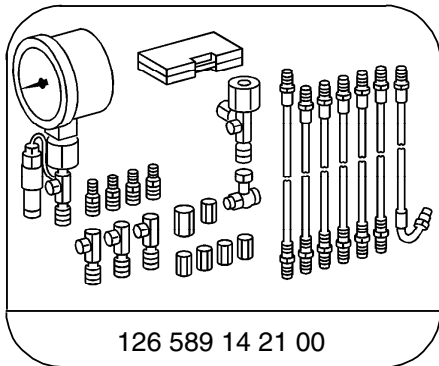
For easier accessibility the pressure gauge can be connected to the left ring cylinder (vent screw) or right ring cylinder (HS line).

7. Connect socket box with contact module 4 (22) and bridge sockets 2 and 27.

Note:

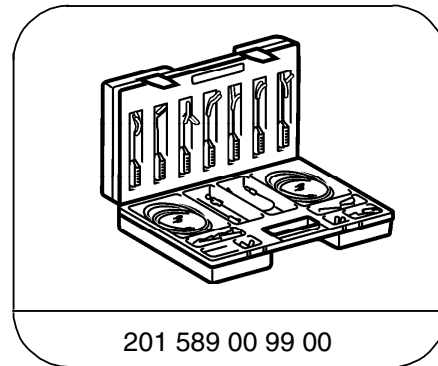
Checking hydraulic pump: 3.2 32 (ADS)

Special Tools



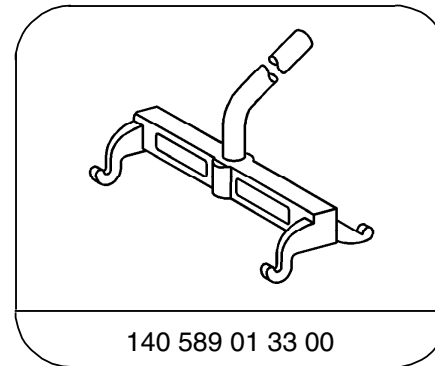
126 589 14 21 00

Tester



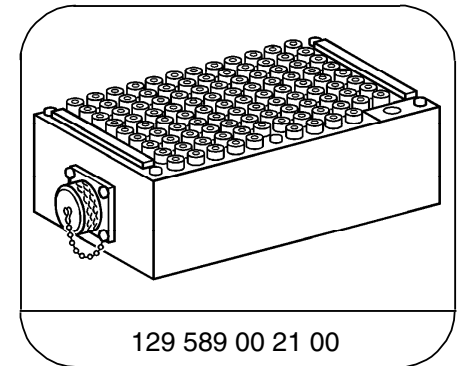
201 589 00 99 00

Electrical connecting set



140 589 01 33 00

Mounting lever

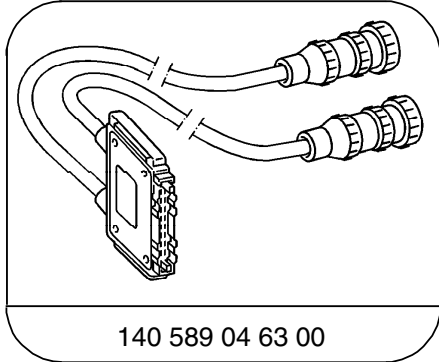


129 589 00 21 00

126-pin socket box

Hydraulic Test Program - Preparation for Test

Special Tools



140 589 04 63 00

Contacting module 4

Hydraulic Test Program - Preparation for Test

Connection Diagram - Pressure Gauge
ASD with pressure reservoir

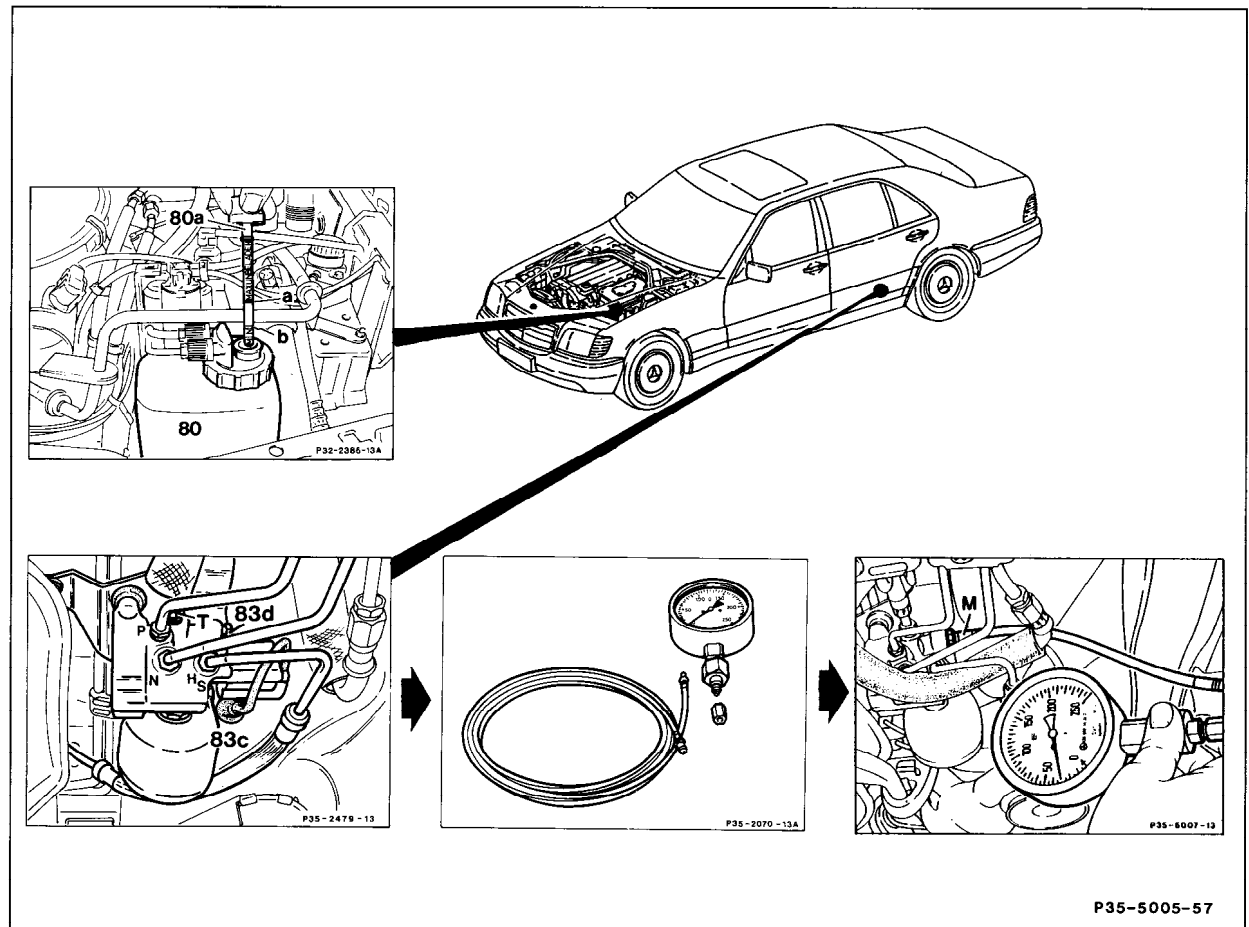


Figure 1

- 80 Hydraulic oil reservoir
- 80a Oil dipstick
- 83c Pressure release screw
- 83d Closing screw on tst connection (M)
- a Maximum oil level
- b Minimum oil level

P35-5005-57

Hydraulic Test Program - Preparation for Test

Connection Diagram - Pressure Gauge
ASD without pressure reservoir

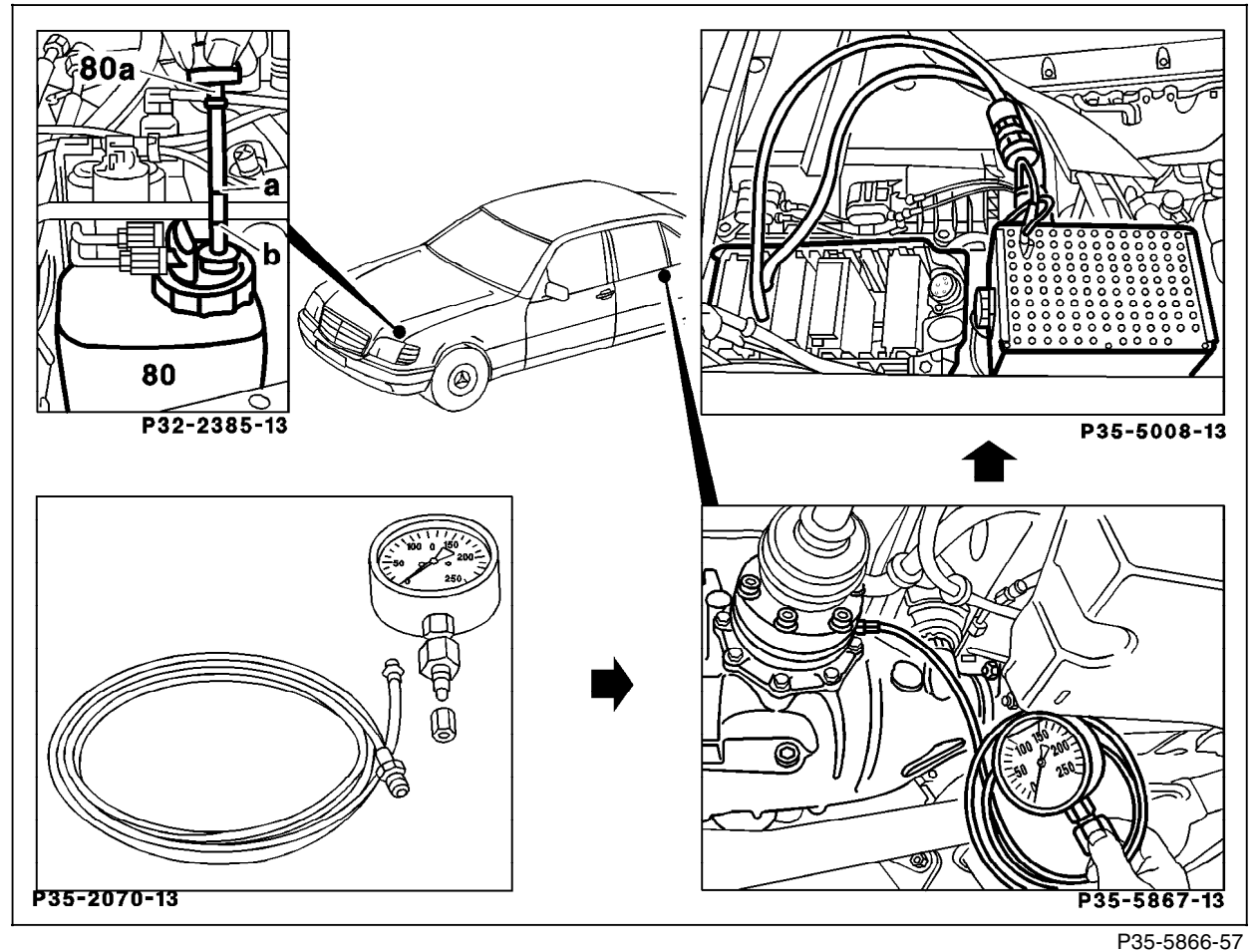


Figure 2

- 80 Hydraulic oil reservoir
- 80a Oil dipstick
- a Maximum oil level
- b Minimum oil level