

Electrical Test Program – ESP Hydraulic Component Locations

Model 129, 202, 208  
 Model 210  
 (with engine 112, 113, 606)

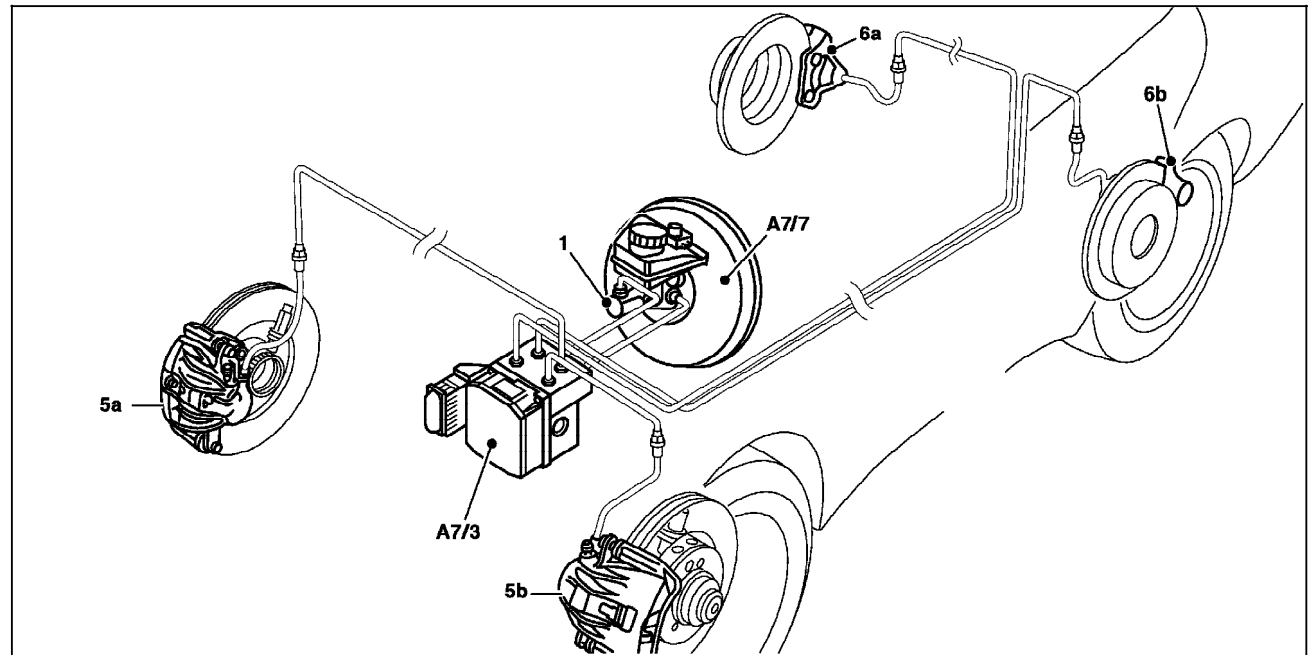


Figure 1

- 1 Tandem master cylinder
- 5a Right front brake caliper
- 5b Left front brake caliper
- 6a Right rear brake caliper
- 6b Left rear brake caliper
- A7/3 ASR/ETS/ESP hydraulic pump
- A7/7 Brake booster (BAS)

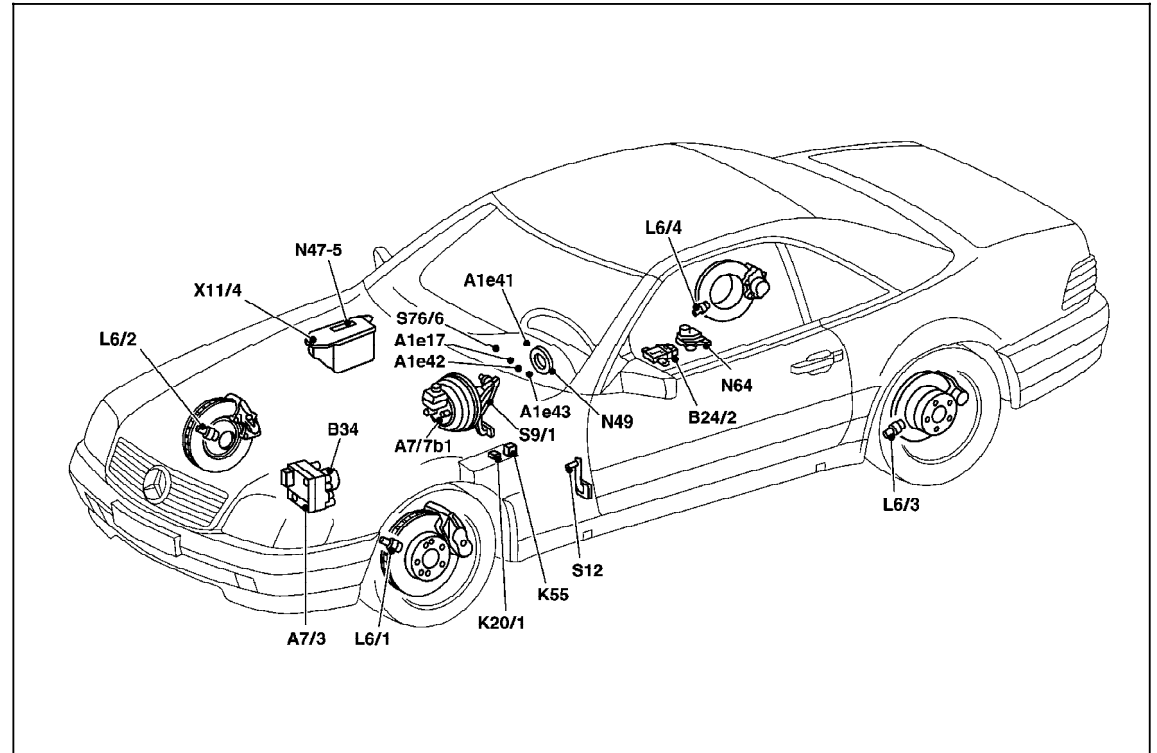
P42.45-0278-09

### Electrical Test Program – ESP Component Locations

#### Model 129 with engine 113

Figure 2

- A1e17 ABS MIL
- A1e41 ESP warning lamp
- A1e42 ESP MIL (without BAS)
- A1e43 ECP MIL (deleted as of 06/96)
- A1e47 BAS/ESP MIL
- A7/3 ASR/ETS/ESP hydraulic unit
- B24/2 ABS lateral acceleration sensor
- B34 ESP brake pressure sensor
- F23/1 Control module box
- K20/1 High-pressure/return pump relay
- K40/4 Passenger-side fuse and relay module box
- K55 Stop lamp suppression relay module
- L6/1 Left front axle VSS sensor
- L6/2 Right front axle VSS sensor
- L6/3 Left rear axle VSS sensor
- L6/4 Right rear axle VSS sensor
- N47-5 ESP/SPS control module
- N49 Steering angle sensor
- N64 ESP yaw sensor
- S9/1 Stop lamp switch (4-pole)
- S12 Parking brake switch
- S76/6 ESP Off switch
- X11/4 Data link connector (DTC readout)



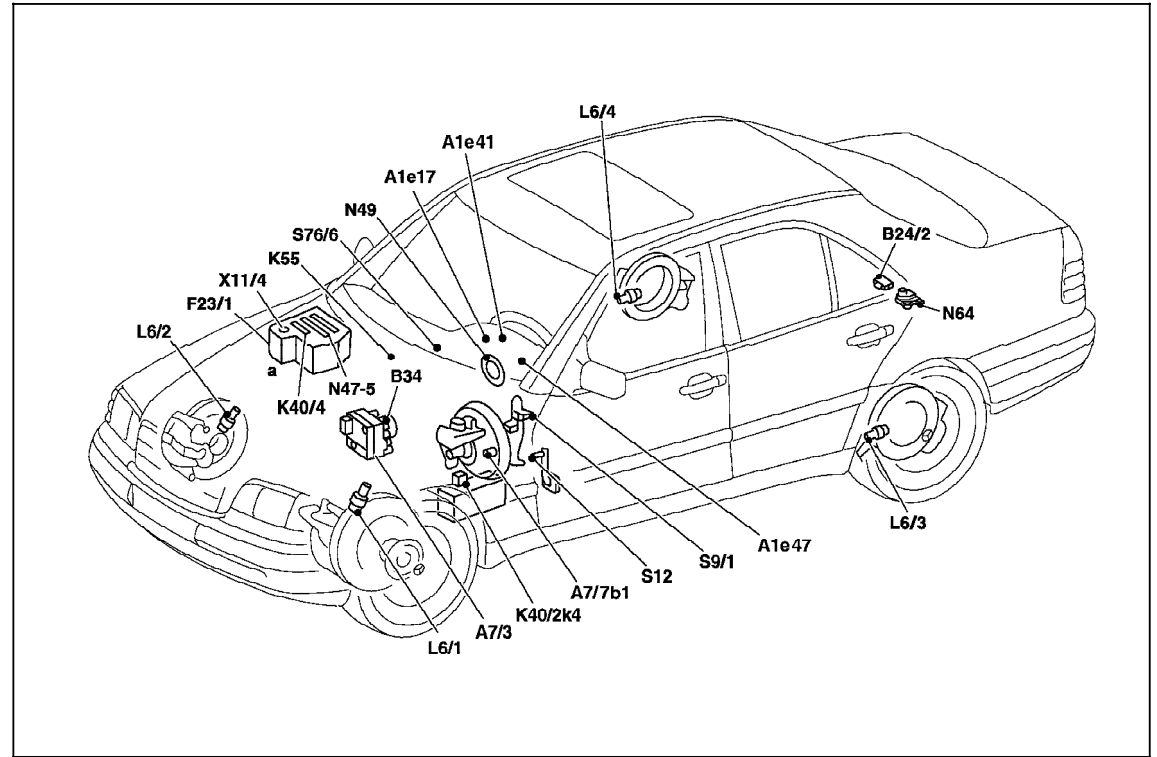
P42.45-2223-09

Electrical Test Program – ESP Component Locations

Model 202, 208  
 Model 202 shown

Figure 2

- A1e17 ABS MIL
- A1e41 ESP warning lamp
- A1e47 BAS/ESP MIL
- A7/3 ASR/ETS/ESP hydraulic unit
- A7/7 Brake booster
- b1 Membrane travel sensor
- B24/2 ABS lateral acceleration sensor
- B34 ESP brake pressure sensor
- F23/1 Control module box
- K40/2 Driver-side fuse and relay module box
- k4 High pressure/return pump relay module
- K40/4 Passenger-side fuse and relay module box
- K55 Stop lamp suppression relay module
- L6/1 Left front axle VSS sensor
- L6/2 Right front axle VSS sensor
- L6/3 Left rear axle VSS sensor
- L6/4 Right rear axle VSS sensor
- N47-5 ESP/SPS control module
- N49 Steering angle sensor
- N64 ESP yaw sensor
- S9/1 Stop lamp switch (4-pole)
- S12 Parking brake switch
- S76/6 ESP Off switch
- X11/4 Data link connector (DTC readout)
- a Control module box



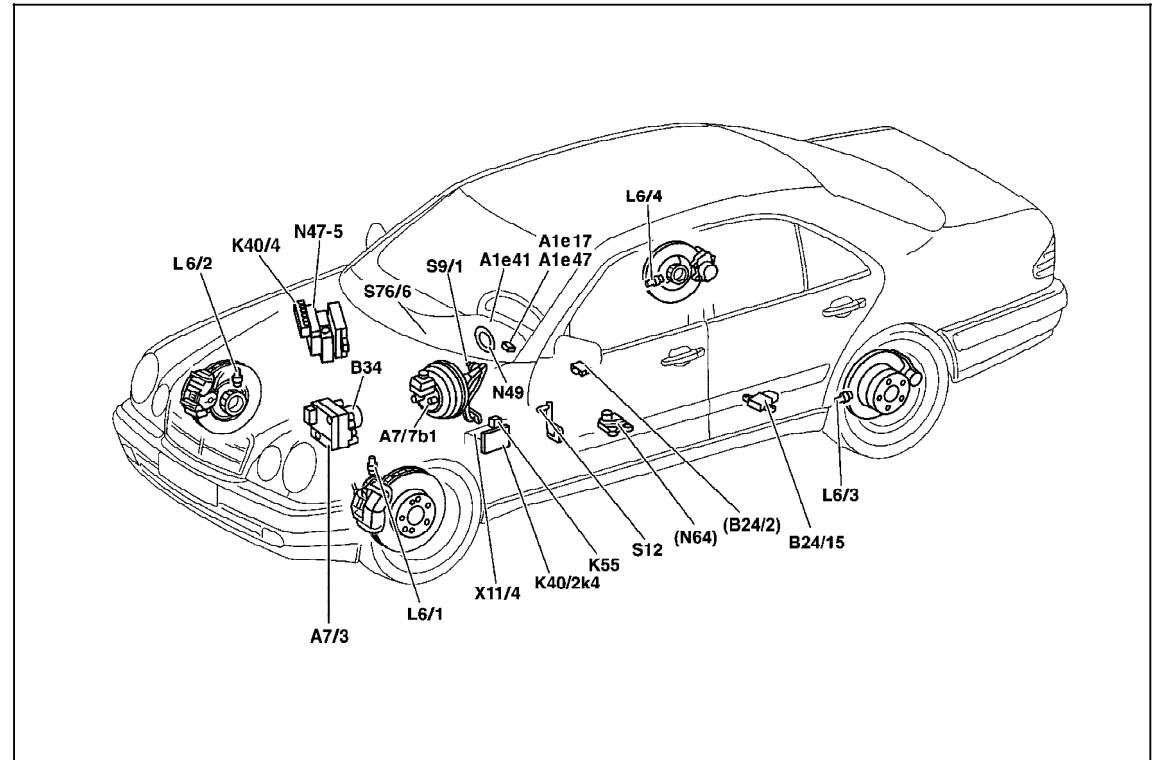
P42.45-0277-09

### Electrical Test Program – ESP Component Locations

#### Model 210 with engine 112, 113, 606

Figure 3

- A1e17 ABS MIL
- A1e41 ESP warning lamp
- A1e47 BAS/ESP MIL
- A7/3 ASR/ETS/ESP hydraulic unit
- A7/7 Brake booster
- b1 Membrane travel sensor
- B24/2 ABS lateral acceleration sensor
- B24/15 (non-USA)
- B34 ESP brake pressure sensor
- K40/2 Driver-side fuse and relay module box
- k4 High pressure/return pump relay module
- K40/4 Passenger-side fuse and relay module box
- K55 Stop lamp suppression relay module
- L6/1 Left front axle VSS sensor
- L6/2 Right front axle VSS sensor
- L6/3 Left rear axle VSS sensor
- L6/4 Right rear axle VSS sensor
- N47-5 ESP/SPS control module
- N49 Steering angle sensor
- N64 ESP yaw sensor
- S9/1 Stop lamp switch (4-pole)
- S12 Parking brake switch
- S76/6 ESP Off switch
- X11/4 Data link connector (DTC readout)



P42.45-0276-09