

## 10.5 Electronic Stability Program (ESP)

Models 170, 202 (with engine 111) as of M.Y. 2000

### Electrical Test Program – ESP Hydraulic Component Locations

Model 202 with engine 111 shown

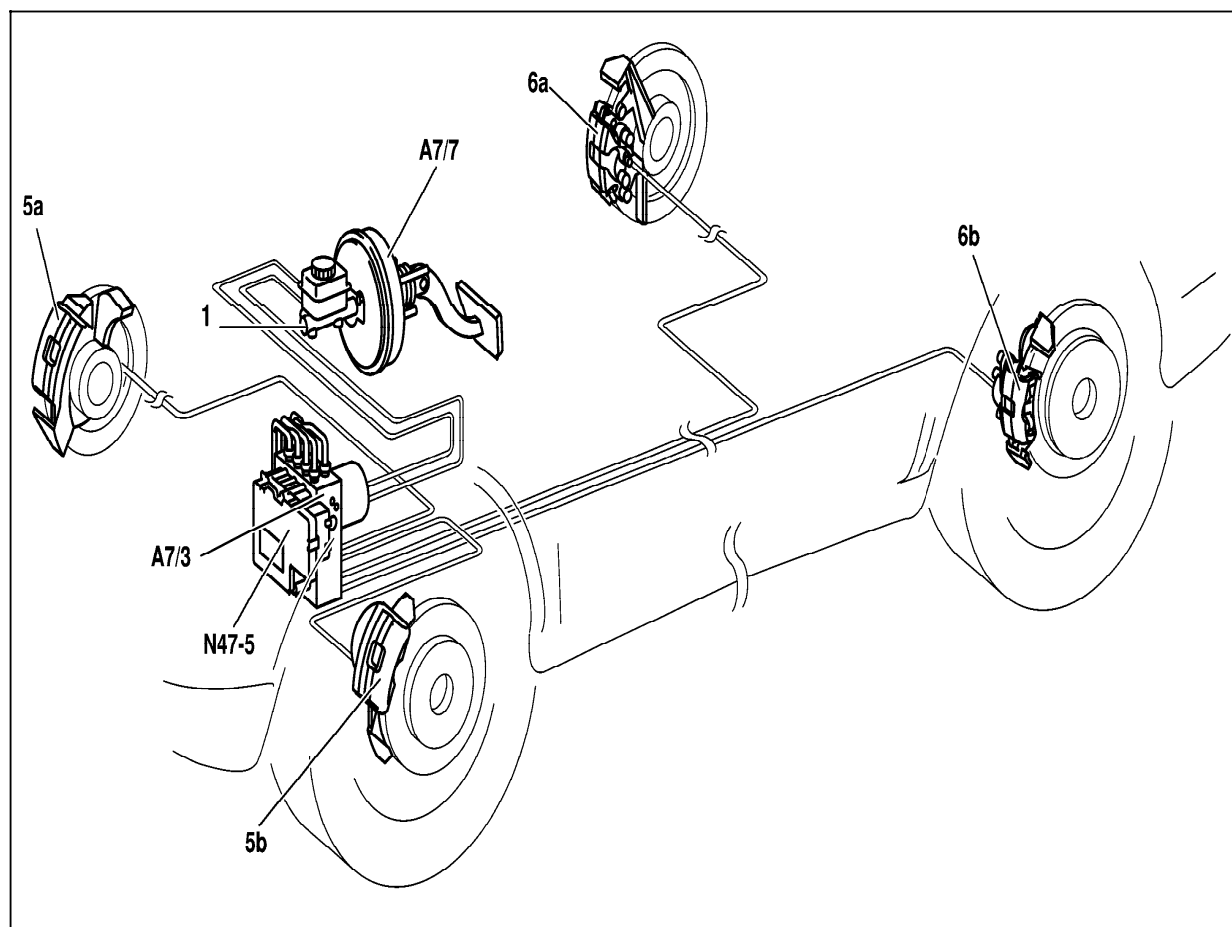


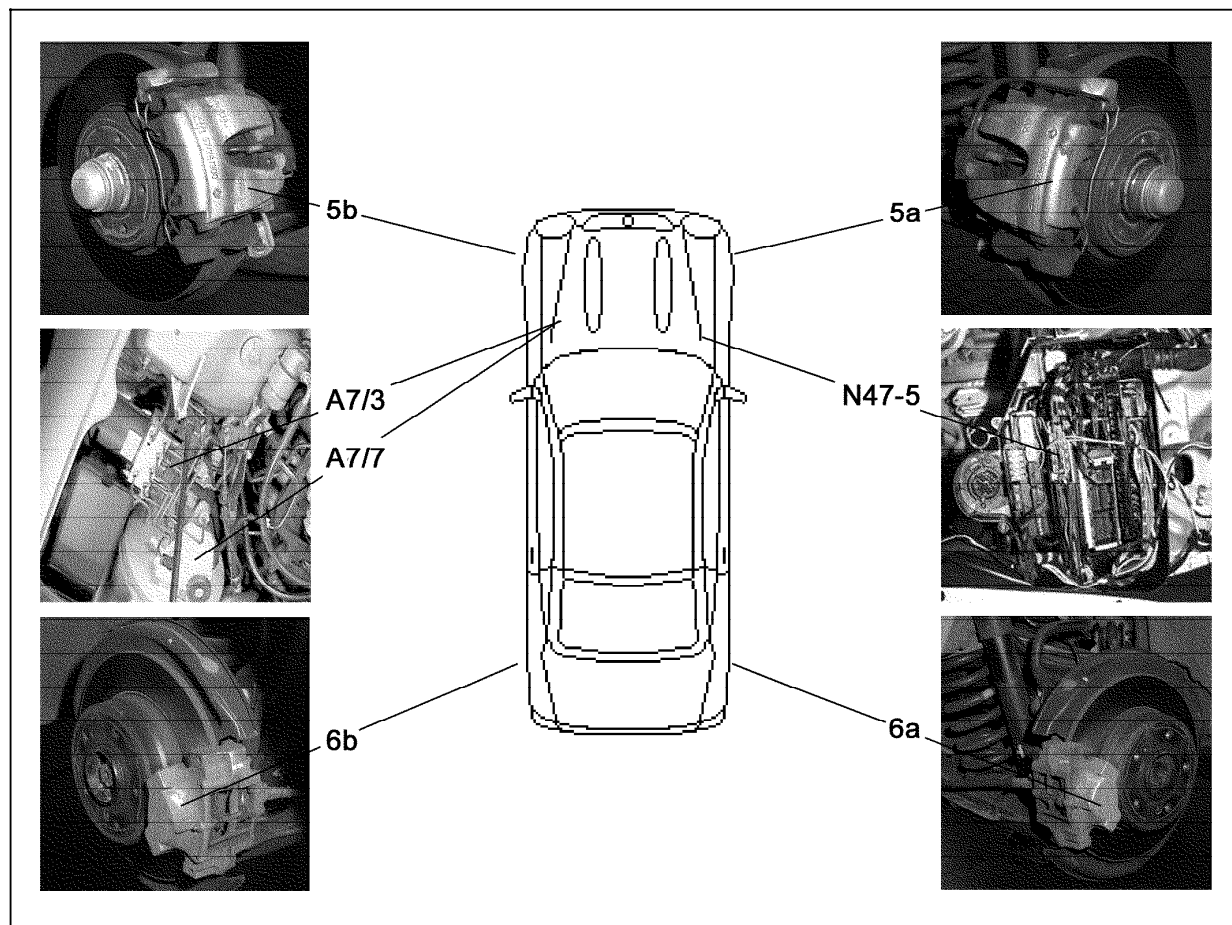
Figure 1

- 1 Tandem master cylinder
- 5a Right front brake caliper
- 5b Left front brake caliper
- 6a Right rear brake caliper
- 6b Left rear brake caliper
- A7/3 ASR/ETS/ESP hydraulic unit for traction systems
- A7/7 Brake booster (BAS)

P42.45-2198-09

### Electrical Test Program – ESP Hydraulic Component Locations

Model 170 with engine 111 shown



P42.45-1504-06x

Figure 2

## 10.5 Electronic Stability Program (ESP)

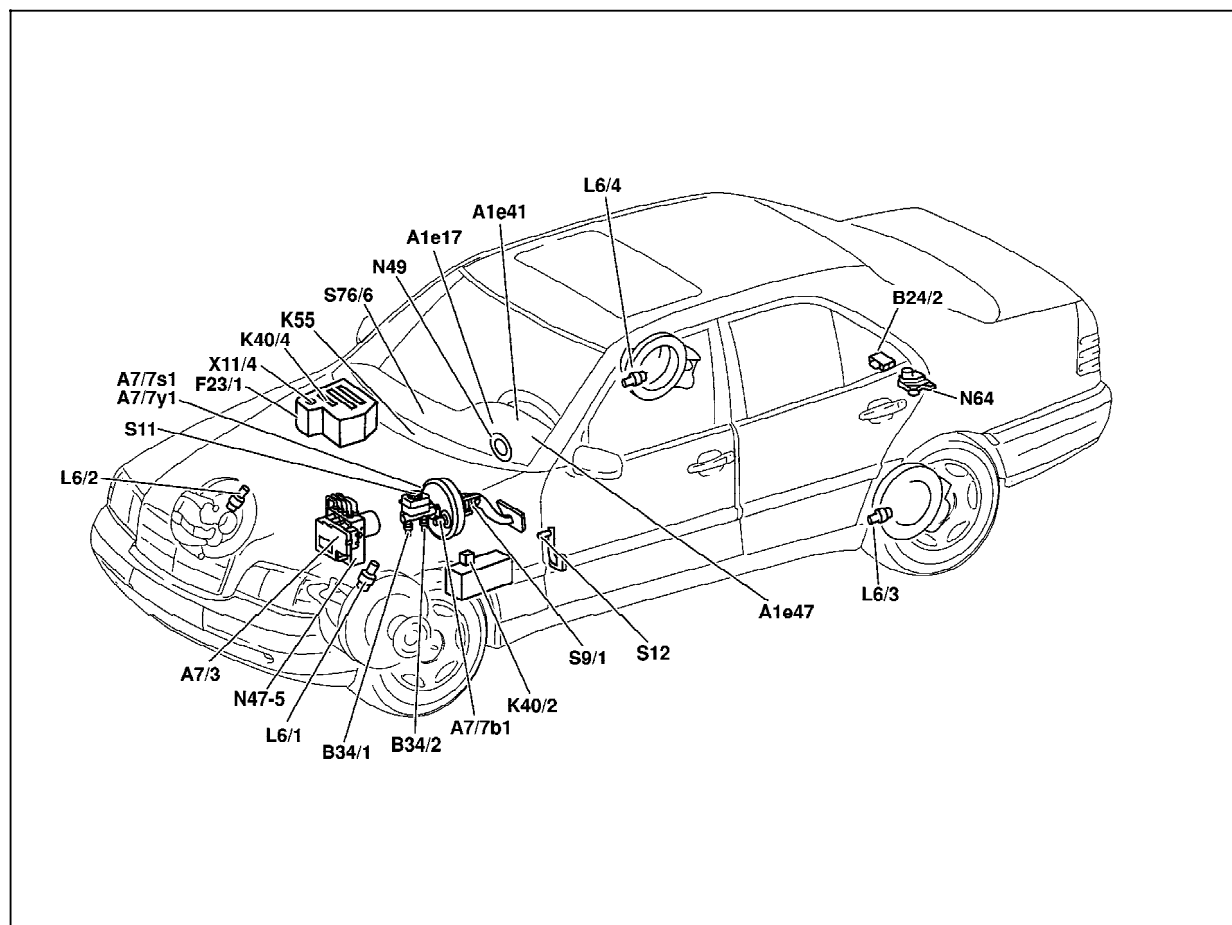
Models 170, 202 (with engine 111) as of M.Y. 2000

### Electrical Test Program – ESP Electronic Component Locations

Model 202 shown

Figure 3

A1e17	ABS MIL
A1e41	ESP warning lamp
A1e47	BAS/ESP MIL
A7/3	ASR/ETS/ESP hydraulic unit
A7/7b1	Membrane travel sensor (BAS)
A7/7s1	Release switch (BAS)
A7/7y1	Solenoid valve (BAS)
B24/2	ABS lateral acceleration sensor
B34/1	ESP brake pressure sensor 1
B34/2	ESP brake pressure sensor 2
F23/1	Control module box
K40/2	Driver's side fuse and relay module box
K40/4	Passenger-side fuse and relay module box
K55	Stop lamp suppression relay module
L6/1	Left front VSS
L6/2	Right front VSS
L6/3	Left rear VSS
L6/4	Right rear VSS
N47-5	ESP/BAS control module
N64	ESP yaw rate sensor
N49	Steering angle sensor
S9/1	Stop lamp switch (4-pole)
S11	Brake fluid level switch
S12	Parking brake switch
S76/6	ESP OFF switch
X11/4	Data link connector (DTC readout)



P42.45-2199-09