

Vacuum Line Routing

Engine 606.912, Model 210 (USA)

Figure 1

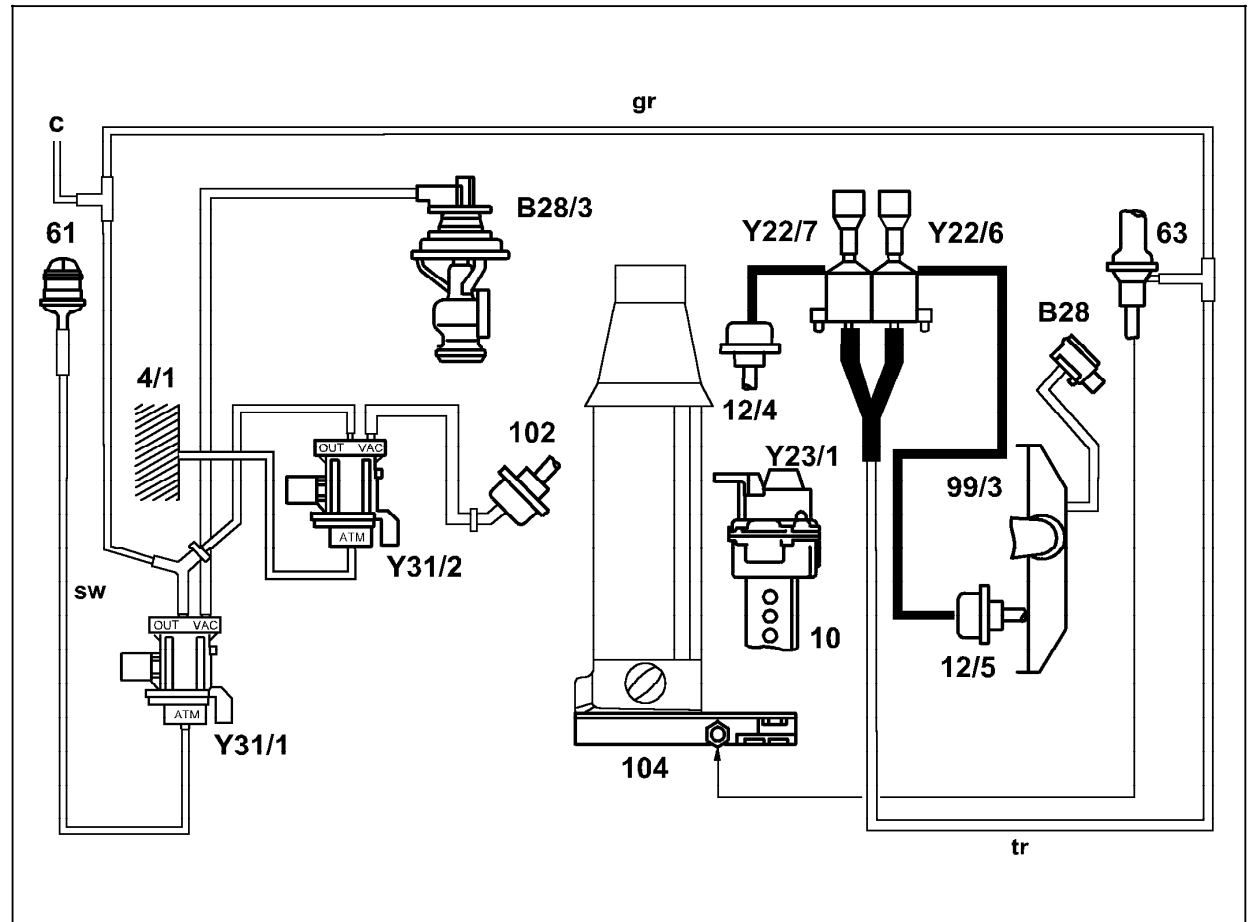
- 4/1 Air filter upper housing
- 10 In-line fuel injection pump
- 12/4 Resonance intake line vacuum element
- 12/5 Resonance intake manifold vacuum element
- 61 Filter
- 63 Check valve with orifice 0.8 mm
- 99/3 Resonance intake manifold
- 102 Pressure control flap vacuum element
- 104 Vacuum pump

- ATM Vent to component compartment
- OUT Outlet from vacuum transducer (Y31/2)
- VAC Vacuum supply from vacuum pump

- B28 Pressure sensor
- B28/3 EGR lifting sender
- Y22/6 Resonance intake manifold switchover valve
- Y22/7 Resonance intake line switchover valve
- Y23/1 Fuel quantity actuator
- Y31/1 EGR valve pressure transducer
- Y31/2 Pressure control flap vacuum transducer

- gr grey
- tr transparent
- sw black

- c Remaining consumers



P07.12-0344-06