

B 2 Closed Throttle Position (Idle) Test

Operation No. of Text Description and Time Allowance 07-2053 or 2056

Test Steps

1	Test equipment	connect/disconnect according to connection diagram.
2.0	Throttle control linkage	check for free movement and condition.
2.1	CTP (idle) stop (a)	check.
3	Run engine to operating temperature	>60 °C
4	Shift selector lever position	HHT display: P/N
5	Engine speed (CTP)	check, (Test and Adjustment Data, section A)
6	Engine running at CTP	check with selector lever in position “D” (parking and service brake applied) and consumers turned on.

B 2 Closed Throttle Position (Idle) Test

Connection Diagram – Engine 606.912 IFI

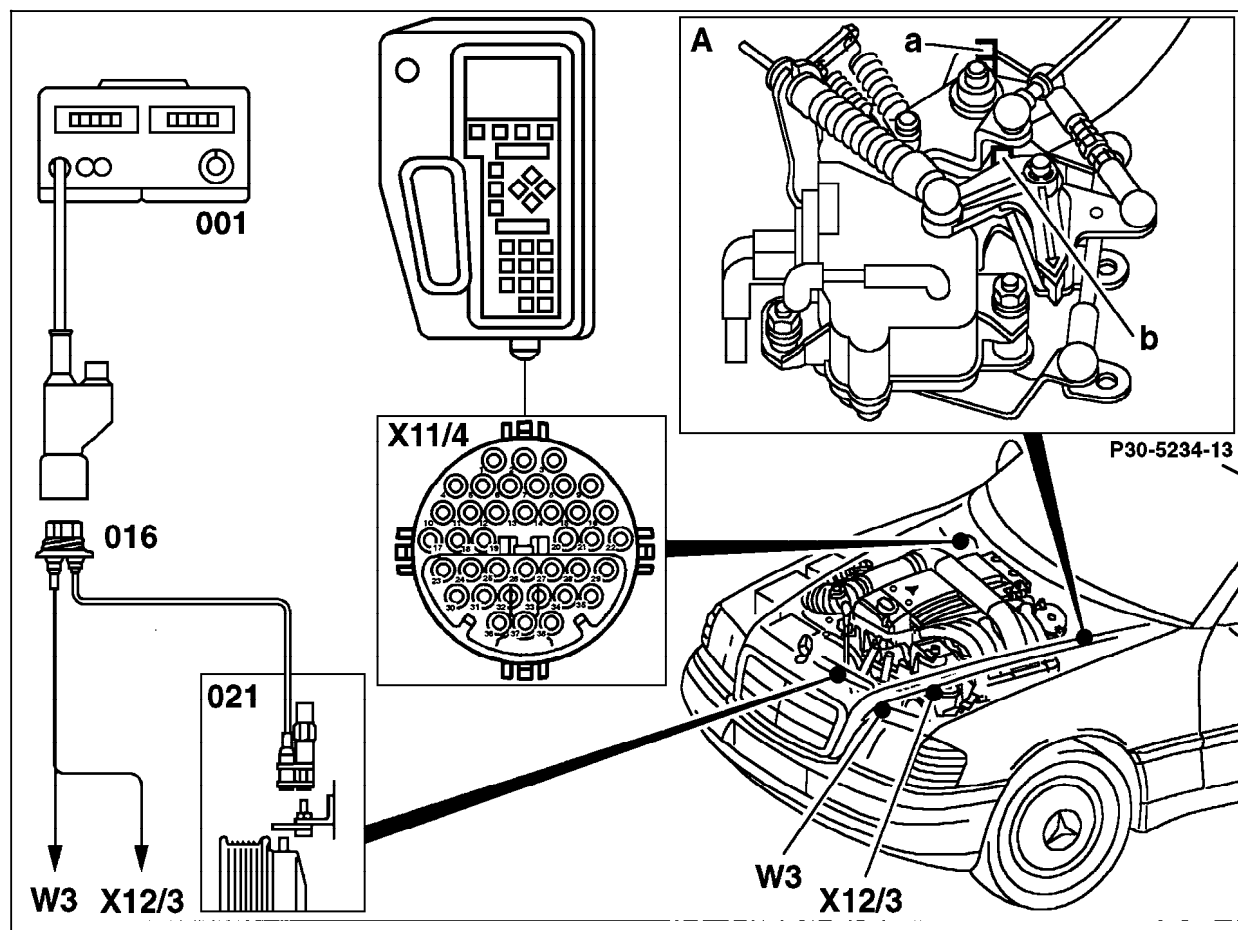
Figure 1

- 001 Digital tester
- 016 Diagnostic socket
- 021 TDC impulse sensor
- 087 Hand-Held Tester (HHT)

- W3 Ground (left front wheelhousing)
- X11/4 Data link connector (DTC readout)
on Model 210 in left front fuse box
- X12/3 Terminal block (circuit 30)

- A Throttle control unit

- a Closed throttle position stop
- b Wide open throttle stop

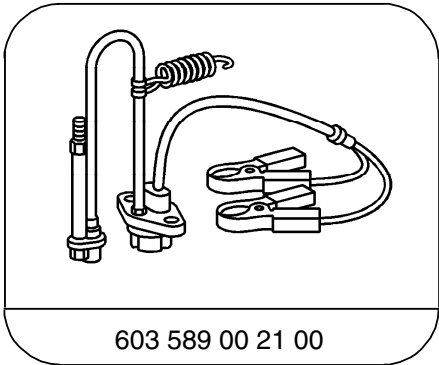


P07-6339-57

B 2

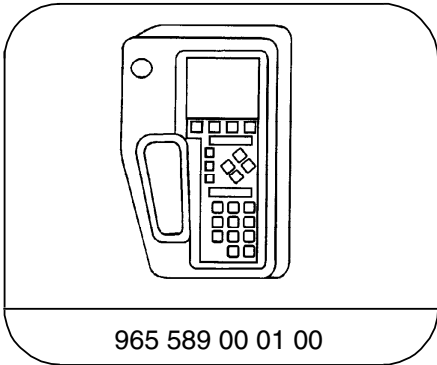
Closed Throttle Position (Idle) Test

Special Tools



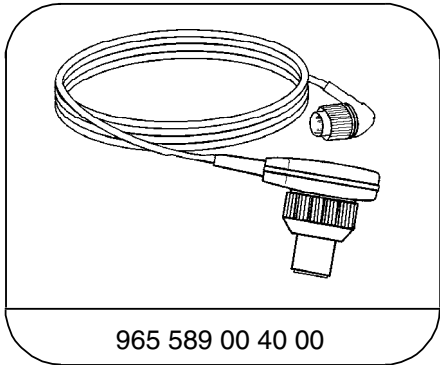
603 589 00 21 00

TDC sensor



965 589 00 01 00

Hand-Held-Tester



965 589 00 40 00

Test cable

Conventional tools, test equipment

Description	Brand, model, etc.
Multimeter ¹⁾	Fluke models 23, 83, 85, 87
Engine analyzer ¹⁾	Bear DACE

¹⁾ Available through the MBUSA Standard Equipment Program.