

B 8 Automatic Transmission Vacuum Control Valve Test and Adjustment

Operation No. of Text Description and Time
Allowance 27-0035 or 27-0037 or 27-0038

Test Conditions

- 1 Vacuum tester (019) on vacuum control valve (65) with Y-fitting connect, disconnect
- 2 Run engine at **CTP** : Vacuum > 400 mbar
- 3 Turn engine off, move throttle linkage to full load 0 mbar
- 4 Vacuum control valve adjust by loosening nuts (65/1), move throttle linkage to full load position and turn vacuum control valve clockwise against throttle linkage. Tighten nuts (65/1).

B 8 Automatic Transmission Vacuum Control Valve Test and Adjustment

Connection Diagram – Engine 606.912 IFI

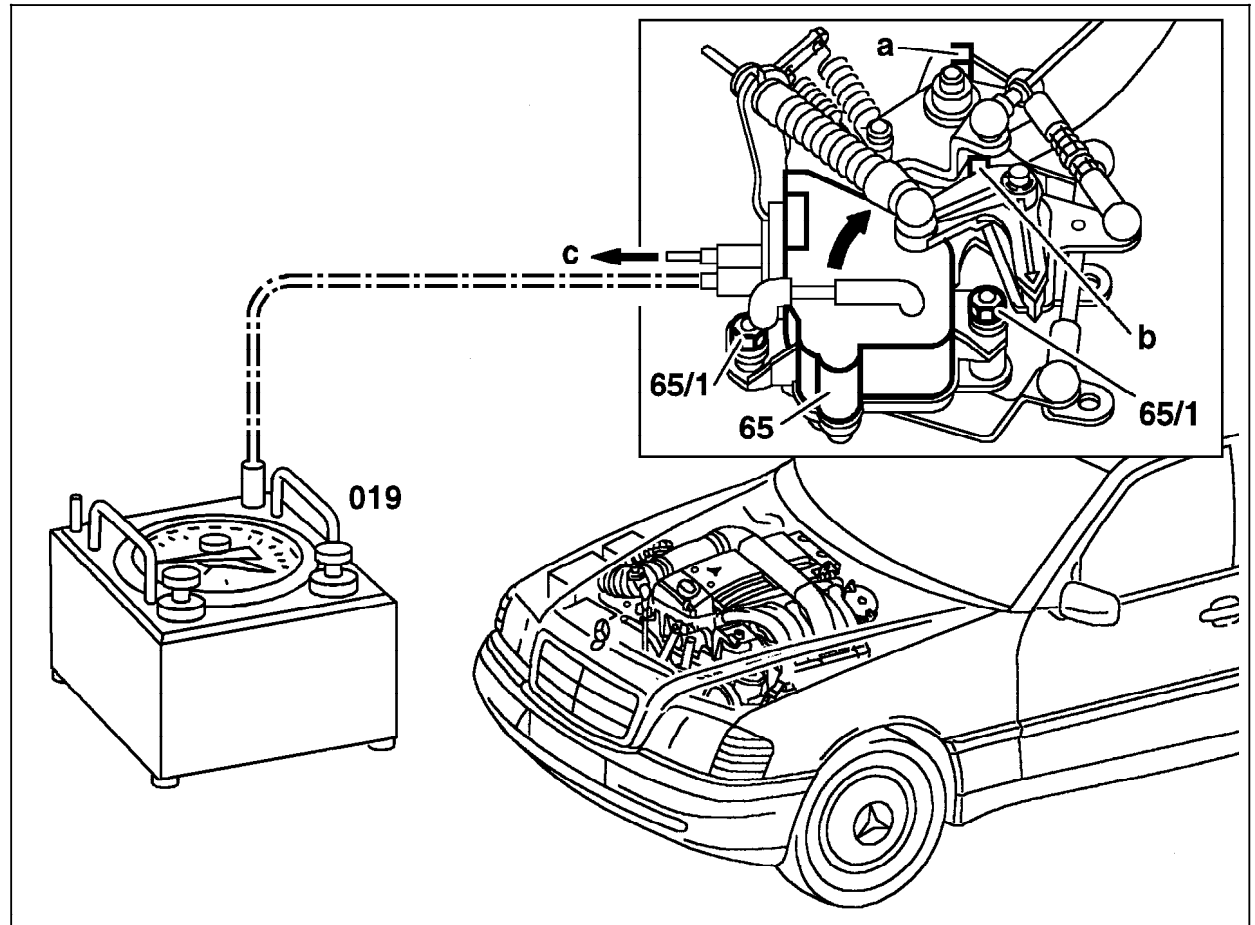


Figure 1

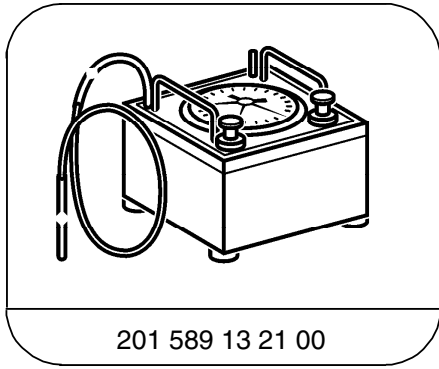
- 019 Vacuum tester
- 65 Vacuum control valve
- 65/1 Vacuum control valve nut

- a Closed throttle position stop
- b Wide open throttle position stop
- c to vacuum pump

P07-6350-57

B 8 Automatic Transmission Vacuum Control Valve Test and Adjustment

Special Tools



201 589 13 21 00

Tester