

**Diagnosis – Ignition Coil Test****Bear engine analyzer only!**

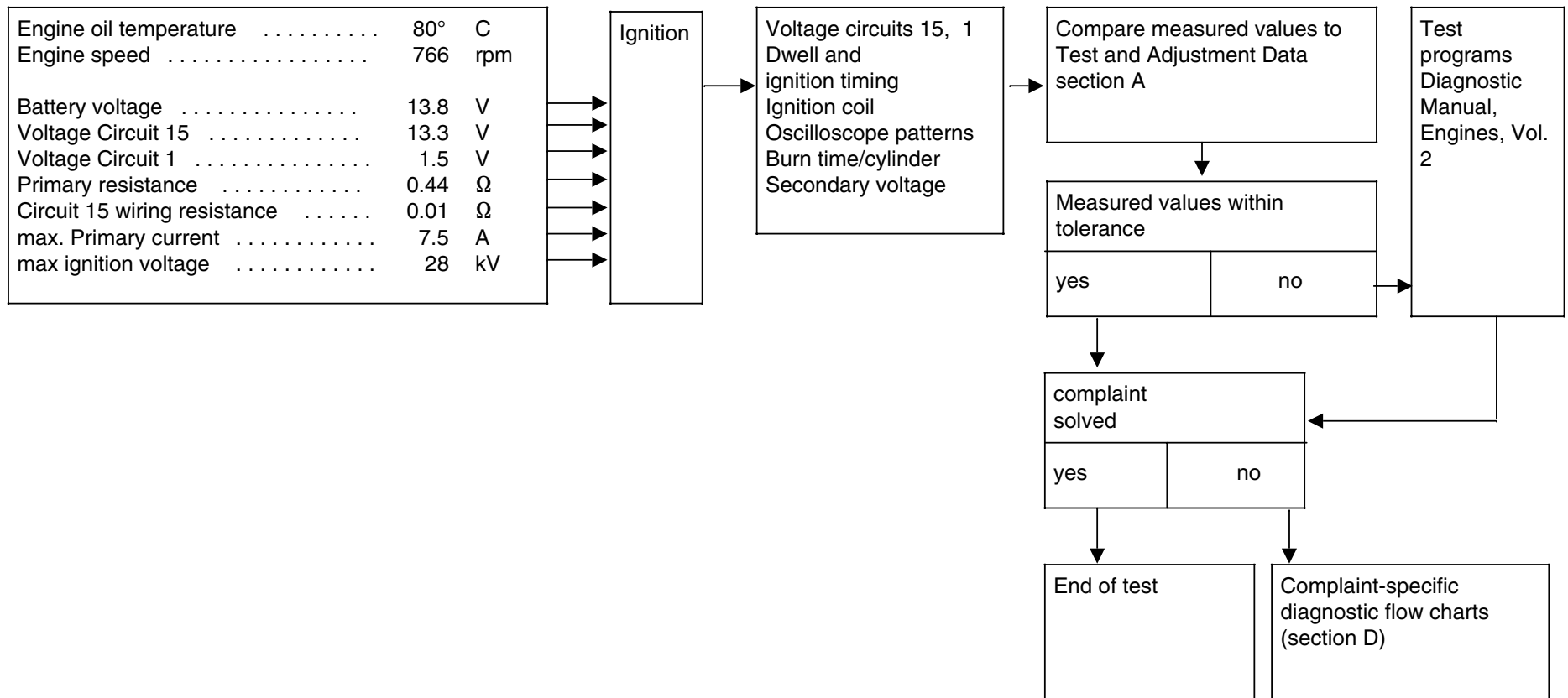
Single/dual ignition systems

- Perform ignition coil test only at idle rpm.
- In addition, the ignition coil must be checked against the oscilloscope pattern in the single display mode, see pages 48/7 and 48/8.
- Program selection “engine electrical ignition coil test.”
- Test and adjustment data see section A.

Diagnosis – Ignition Coil Test

**Bear engine analyzer only!**

Single/dual ignition systems



**Note:**  
The specifications shown are for a 4 cylinder engine and can not be compared directly.