

Electrical Test Program - Component Locations

Engine 111

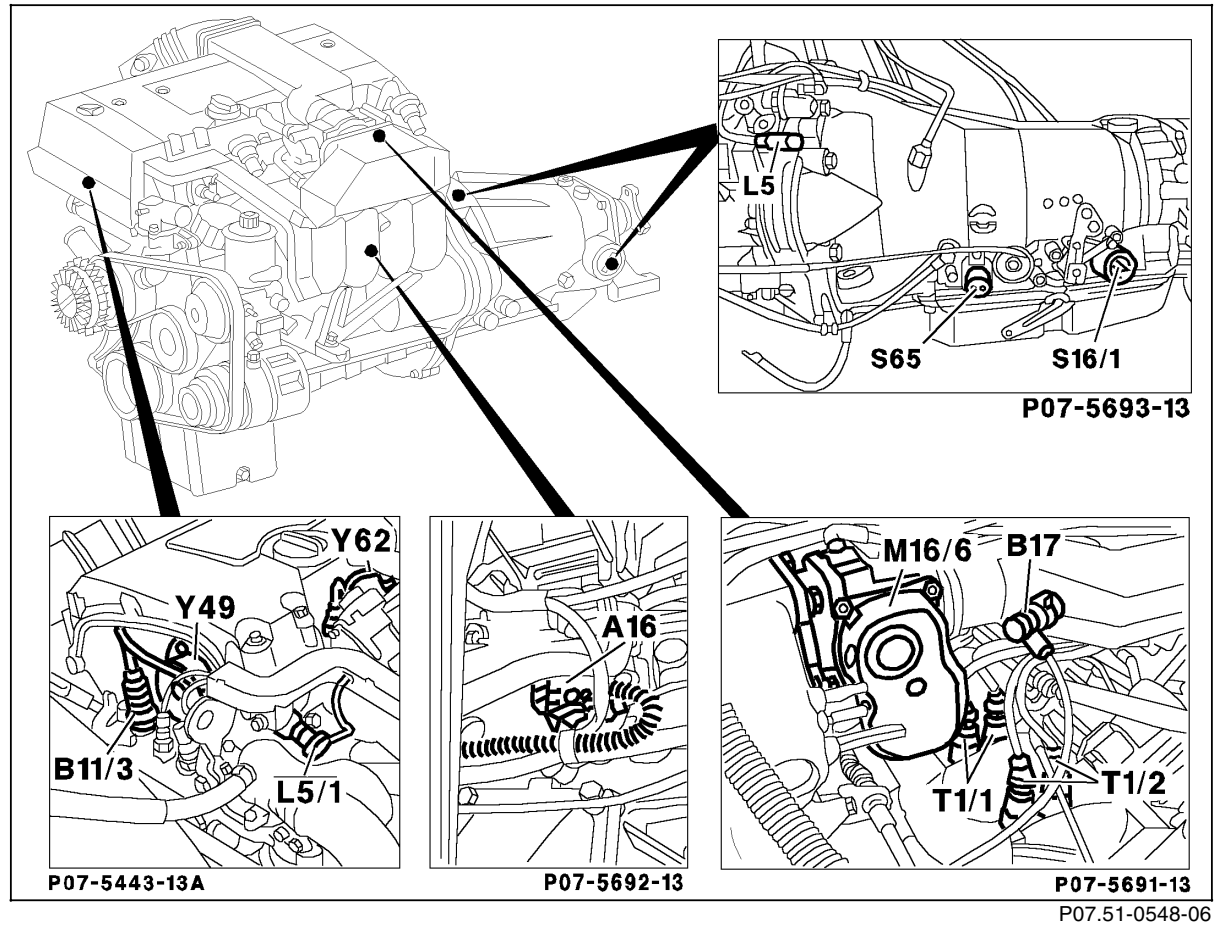
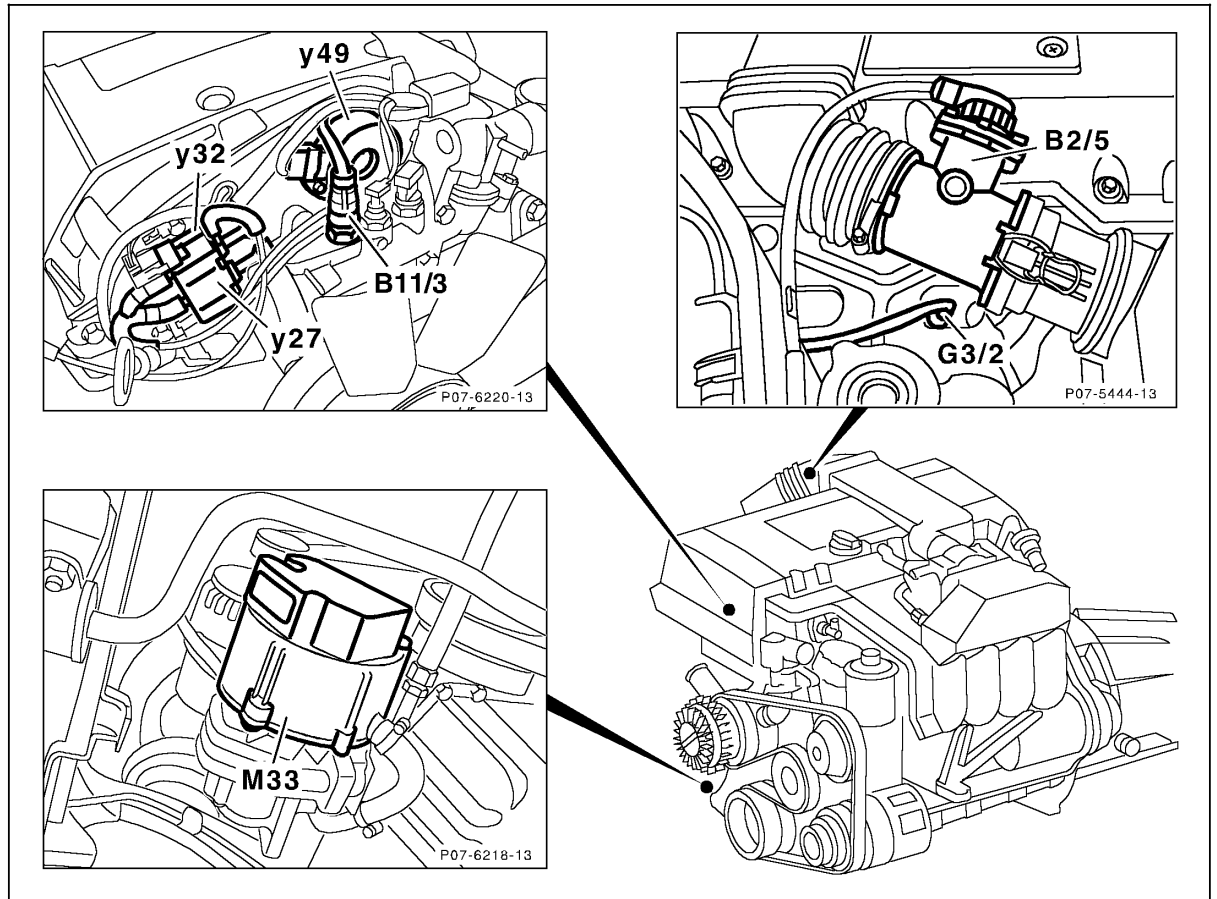


Figure 1

- A16 Knock sensors
- B11/3 ECT sensor
- B17 IAT sensor
- L5 CKP sensor
- L5/1 CMP sensor
- M16/6 ISC actuator
- S16/1 Starter lock-out/backup lamp switch
- T1/1 Ignition coil (cylinders 1 and 4)
- T1/2 Ignition coil (cylinders 2 and 3)
- Y49 Adjustable camshaft timing solenoid
- Y62 Injectors

Electrical Test Program - Component Locations

Engine 111



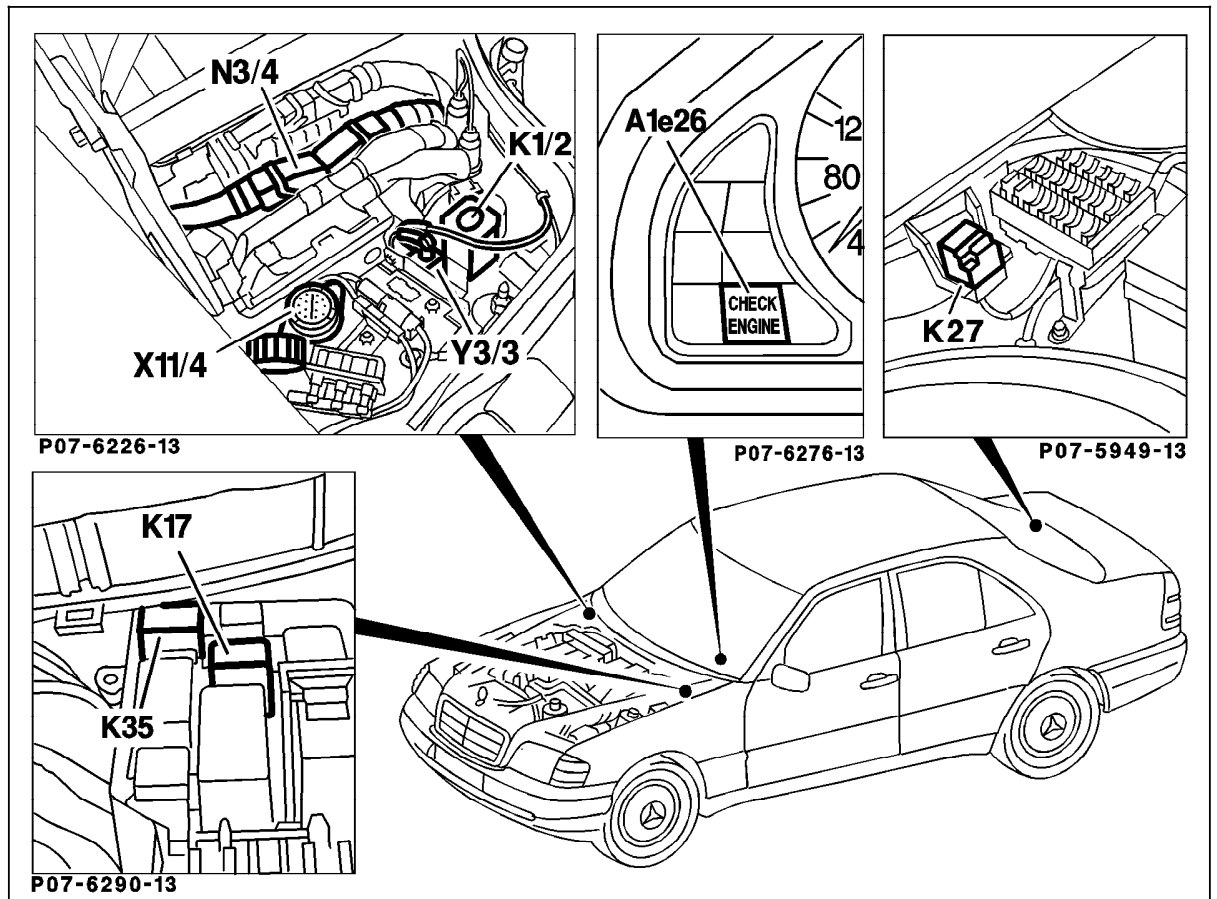
P07-51-0549-06

Figure 2

- B2/5 Hot film mass air flow sensor
- G3/2 O2S 1 (before TWC)
- M33 AIR pump
- Y27 EGR switchover valve
- Y32 AIR pump switchover valve

Electrical Test Program - Component Locations

Engine Compartment
Model 202



P07-6291-57

Figure 3

- A1e26 "CHECK ENGINE" MIL
- K1/2 Overvoltage protection relay module (9-pole)
- K17 AIR relay module
- K27 FP relay module
- K35 O2S 2 (after TWC) heater relay module
- N3/4 Engine control module (HFM-SFI)
- X11/4 Data link connector (DTC readout)
- Y3/3 Upshift delay switchover valve

Electrical Test Program - Component Locations

Engine Compartment
Model 202

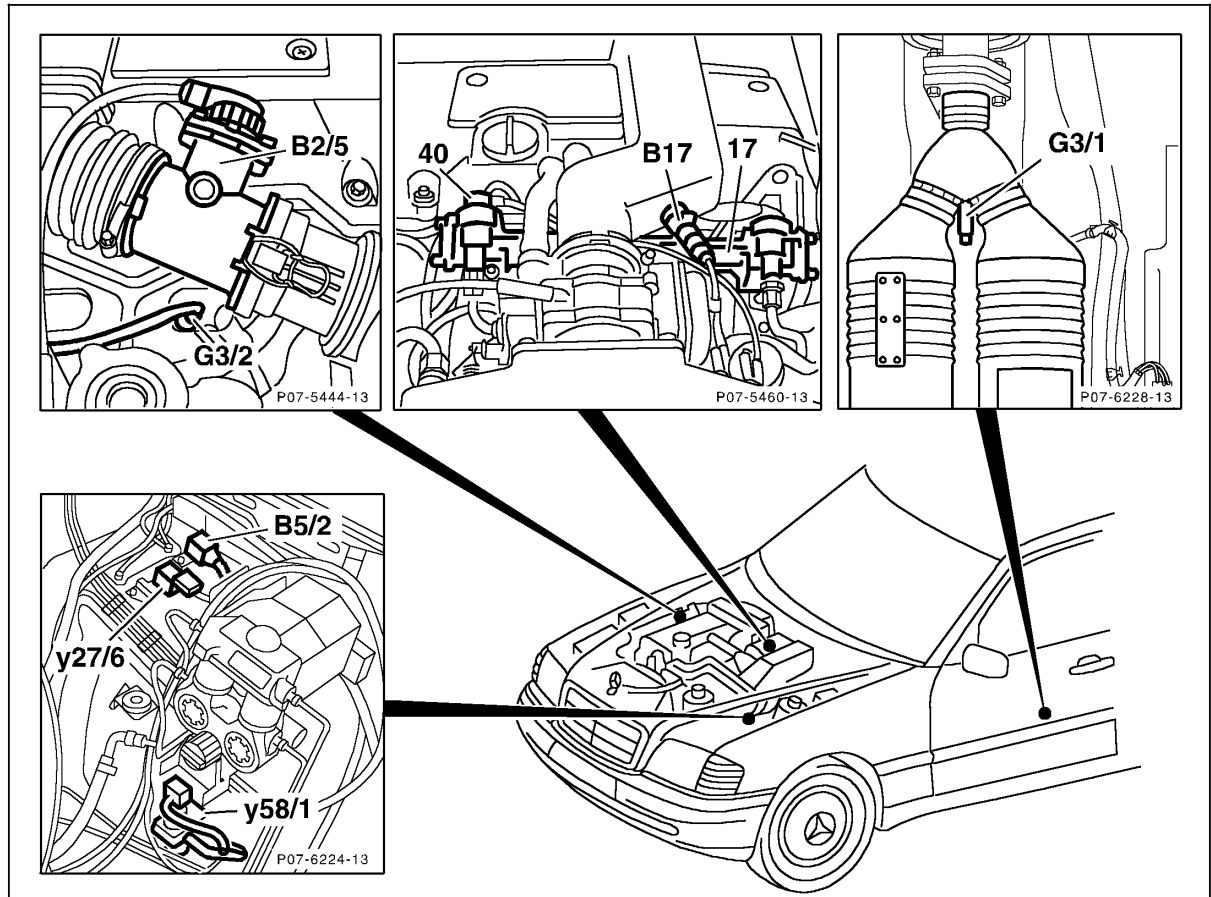


Figure 4

- B5/2 DM pressure sensor
- B17 IAT sensor
- G3/1 O2S 2 (after TWC)
- G3/2 O2S 1 (before TWC)
- Y58/1 Purge control valve

P07.51-0552-06

Electrical Test Program - Component Locations

Engine Compartment
Model 202

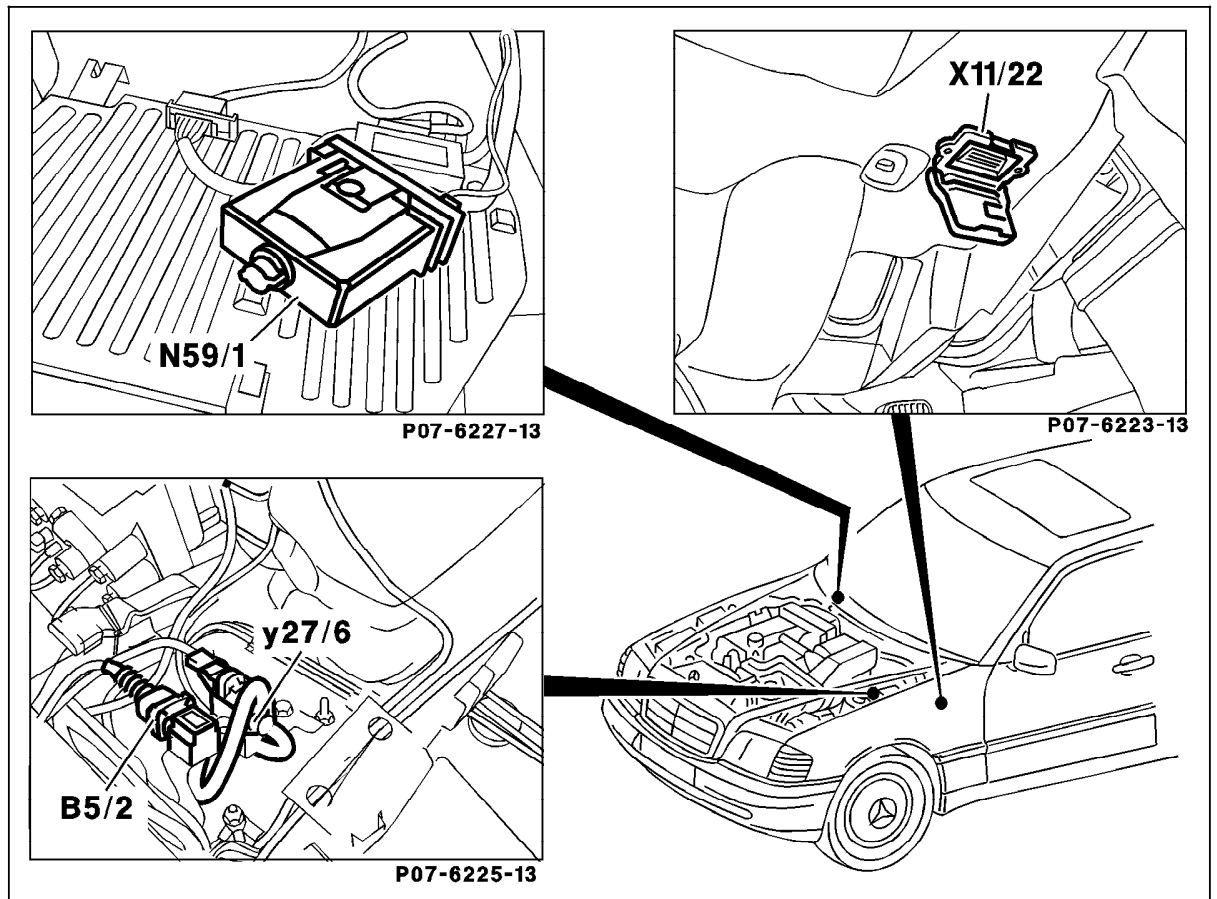


Figure 5

- B5/2 DM pressure sensor (HFM-SFI)
- N59/1 Diagnostic module (OBD II)
- X11/22 Diagnostic module (OBD II) generic scan tool connector
- Y27/6 Purge flow switchover valve

P07-6293-57