

Hydraulic Test Program - Preparation for Test (Injector Test)

Preparation for Test

1. Connect socket box to engine control module (N3/4).
2. Unplug 2-pole connectors on injectors.
3. Remove fuel rail with injectors, thereby **not** disconnecting the fuel feed and return lines.
4. Connect self-made harness (048) one after another to each injector.
5. Hold each injector one after another in measuring glass.

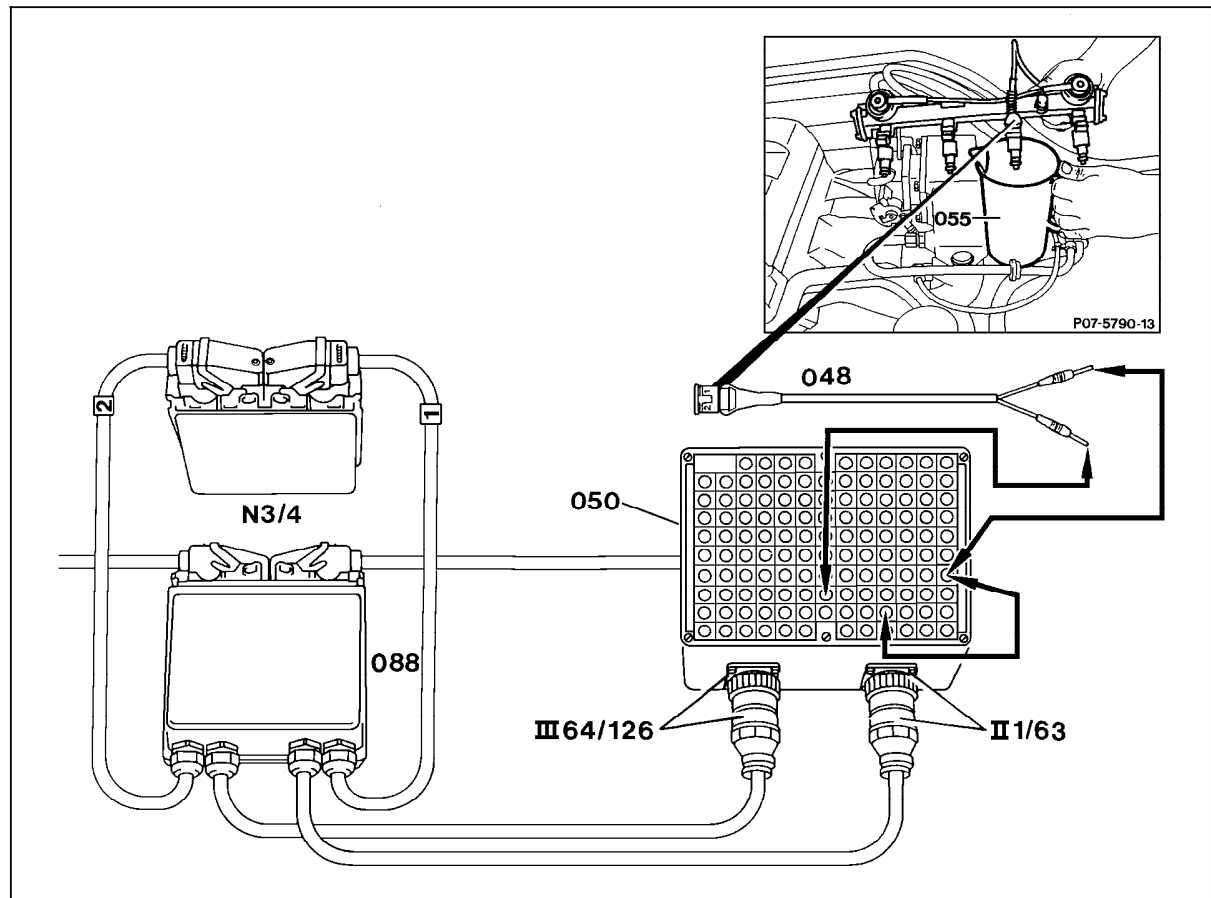


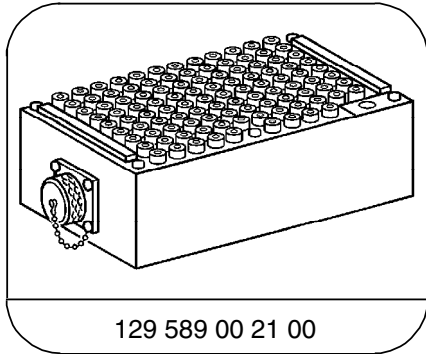
Figure 1

- N3/4 Engine control module (HFM-SFI)
- 048 Self-made harness
- 050 Socket box (126-pole)
- 055 Measuring glass
- 088 Test cable

P07-5706-57A

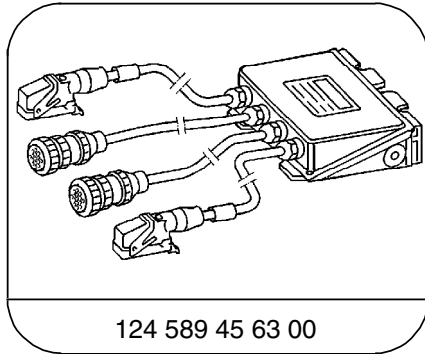
Hydraulic Test Program - Preparation for Test (Injector Test)

Special Tools



129 589 00 21 00

126-pin socket box



124 589 45 63 00

82-pin test cable CAN

Equipment

| | |
|-----------------------------------|----------------|
| Measuring glass (1 liter minimum) | local purchase |
|-----------------------------------|----------------|

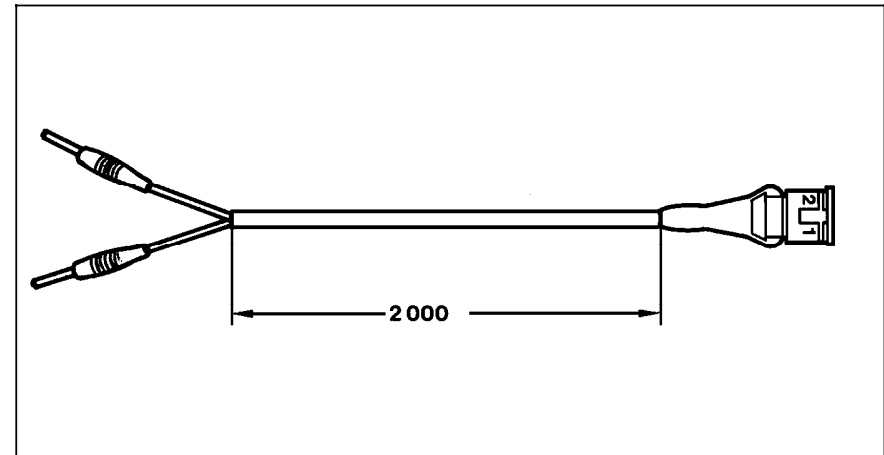
Hydraulic Test Program - Preparation for Test (Injector Test)

Self-made Tool

Test harness consisting of:

- 1X Connector 140 545 35 28
- 2X Contact spring 004 545 56 26
- 1X Banana plug (red)
- 1X Banana plug (black)
- 2.2 m Wire (red, 1.5 mm dia.)
- 2.2 m Wire (brown, 1.5 mm dia.)
- 2 m Harness tubing (6 mm dia.)

Connector layout
Position 1 = red
Position 2 = brown



P07-0625-33