

Electrical Test Program – Component Locations

Model 124

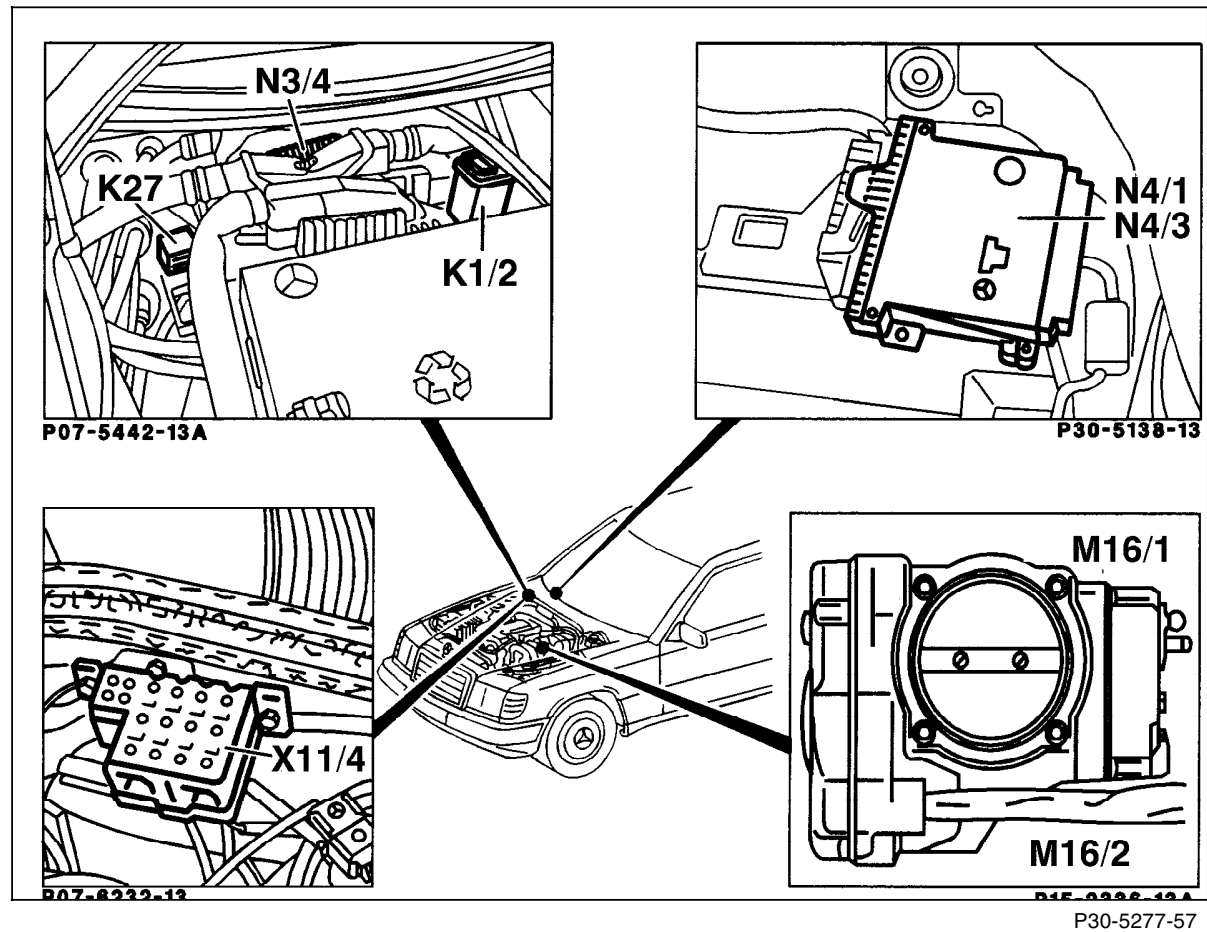
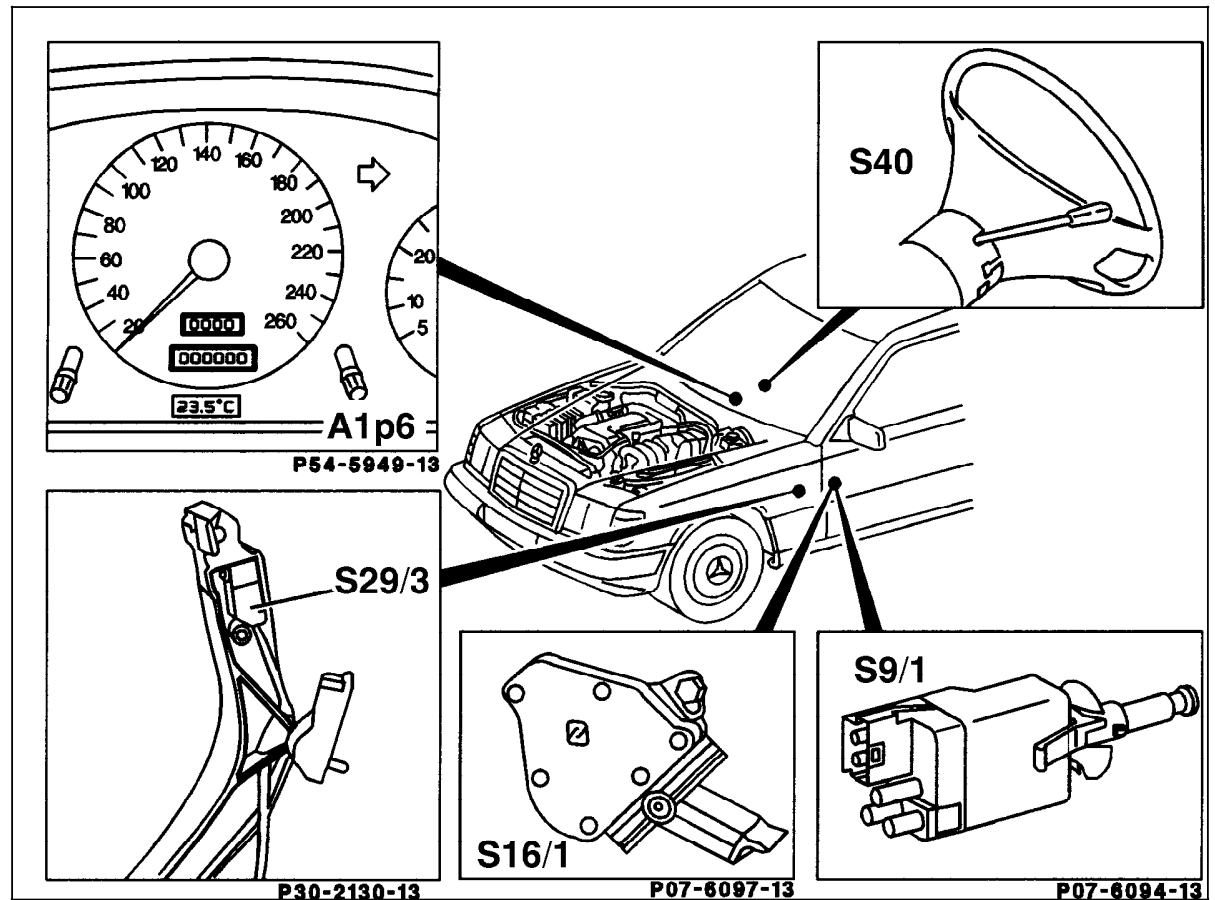


Figure 1

- K1/2 Overvoltage protection relay module (9-pole)
- M16/1 EA/CC/ISC actuator
- N3/4 Engine control module (HFM-SFI)
- N4/1 EA/CC/ISC control module
- X11/4 Data link connector (DTC readout)

Electrical Test Program – Component Locations

Model 124



P30-5276-57

Figure 2

- A1p8 Electronic speedometer
- S9/1 Stop lamp switch (ASR) (4-pole)
- S16/1 Starter lock-out/backup lamp switch
- S29/3 CTP switch
- S40 CC switch
- V Decelerate/set
- B Accelerate/set
- SP Resume
- A Off

Electrical Test Program – Component Locations

Models 129, 140

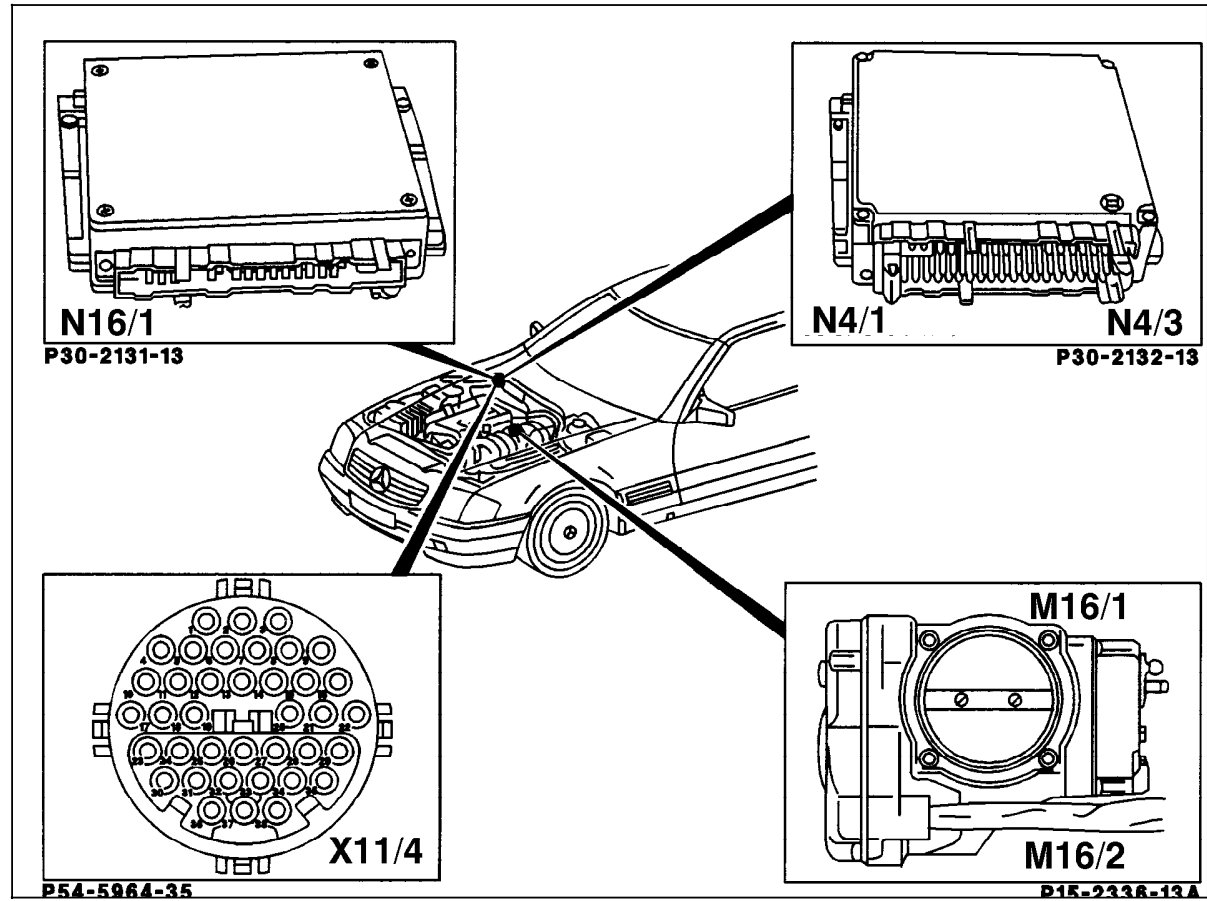
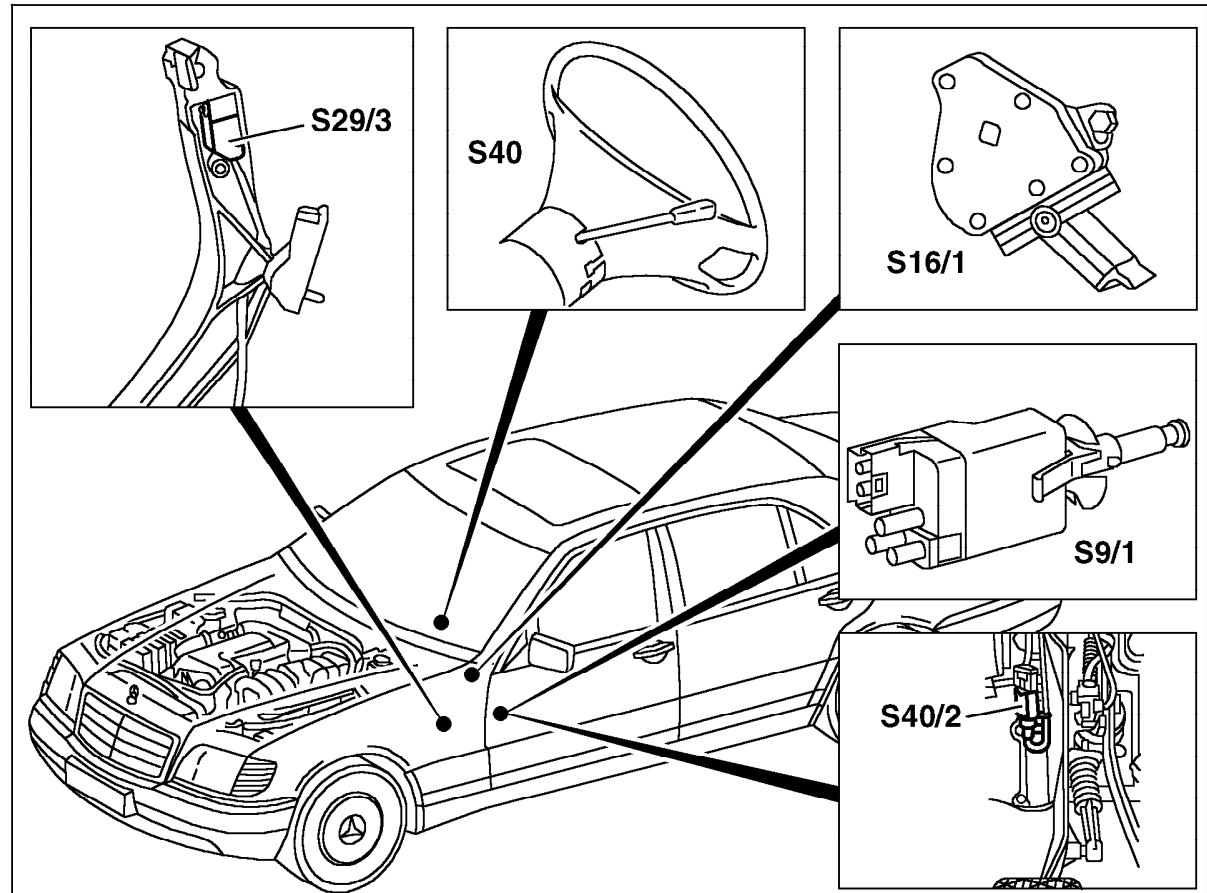


Figure 3

- M16/1 EA/CC/ISC actuator
- N4/1 EA/CC/ISC control module
- N16/1 Base module (BM)
- X11/4 Data link connector (DTC readout)

Electrical Test Program – Component Locations

Models 140, 202



P30.20-0209-57

Figure 4

- S9/1 Stop lamp switch (4-pole)
- S16/1 Starter lock-out/backup lamp switch
- S29/3 CTP switch
- S40 CC switch
 - V Decelerate/set
 - B Accelerate/set
 - SP Resume
 - A Off

Electrical Test Program – Component Locations

Model 202

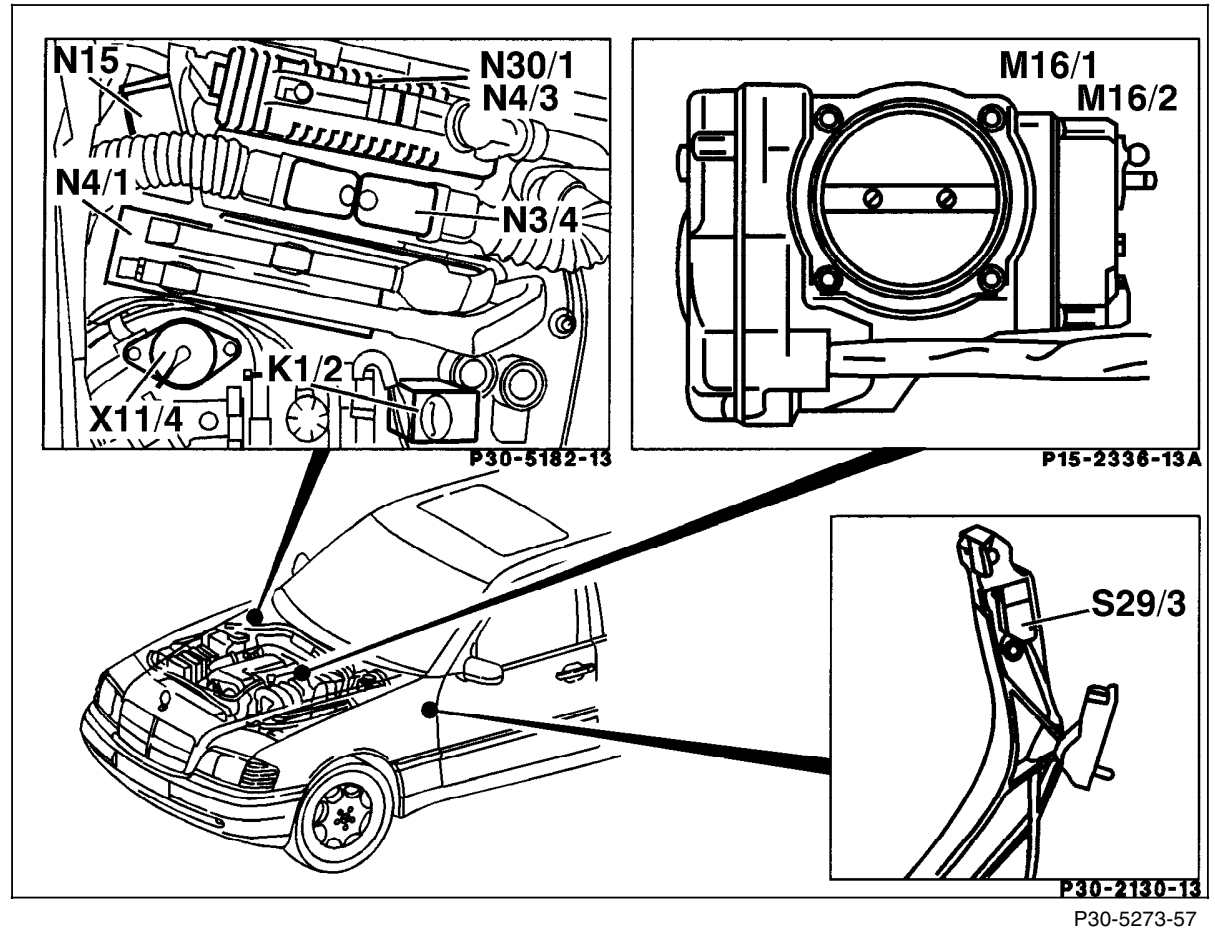


Figure 5

- K1/2 Overvoltage protection relay module (9-pole)
- M16/1 EA/CC/ISC actuator
- N3/4 Engine control module (HFM-SFI)
- N4/1 EA/CC/ISC control module
- N15 Kickdown cut-out relay module
- N30/1 ASR control module
- S29/3 CTP switch
- X11/4 Data link connector (DTC readout)

Electrical Test Program – Component Locations

Model 202

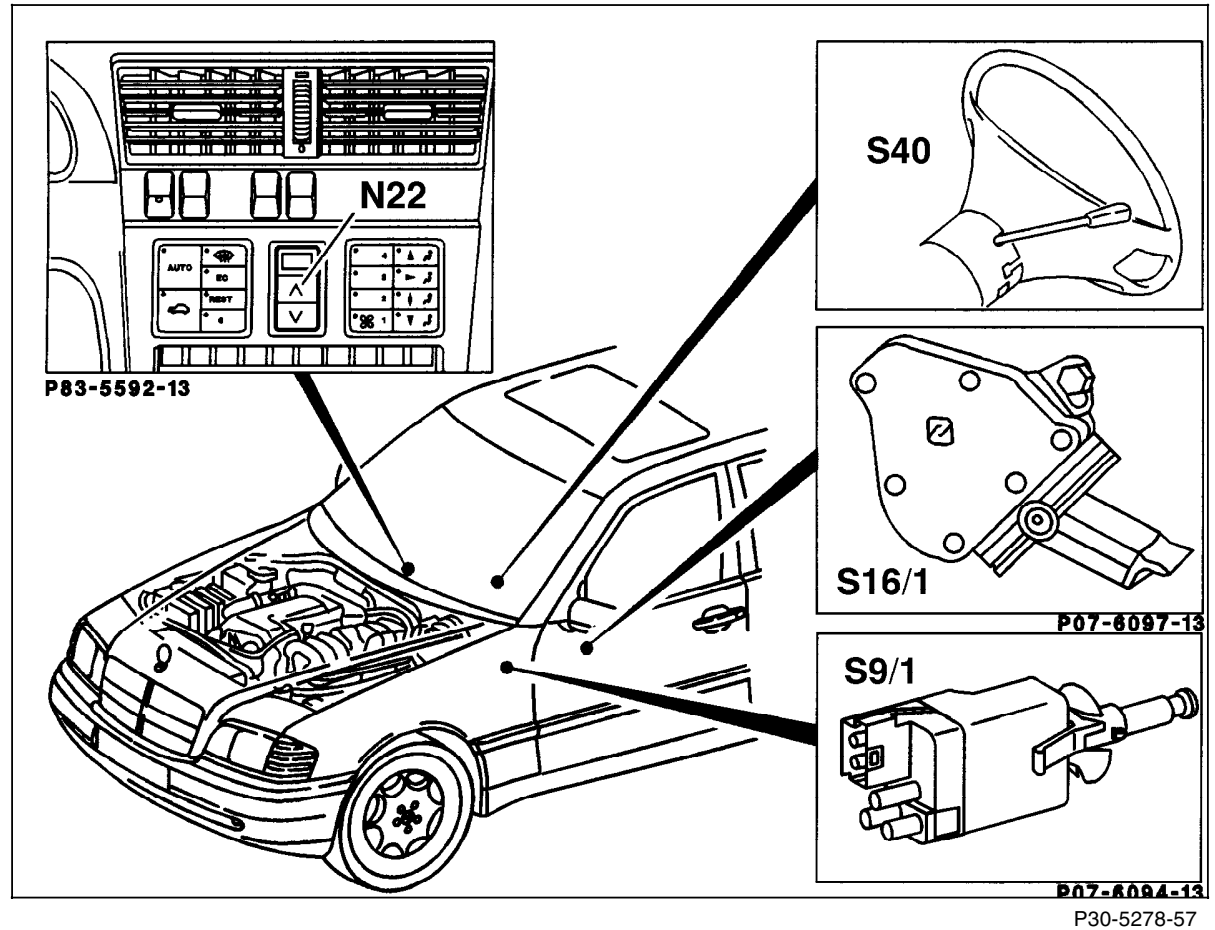


Figure 6

- N22 A/C pushbutton control module (Automatic A/C)
- S9/1 Stop lamp switch (4-pole)
- S16/1 Starter lock-out/backup lamp switch
- S40 CC switch
- V Decelerate/set
- B Accelerate/set
- SP Resume
- A Off

Electrical Test Program – Component Locations

Model 210

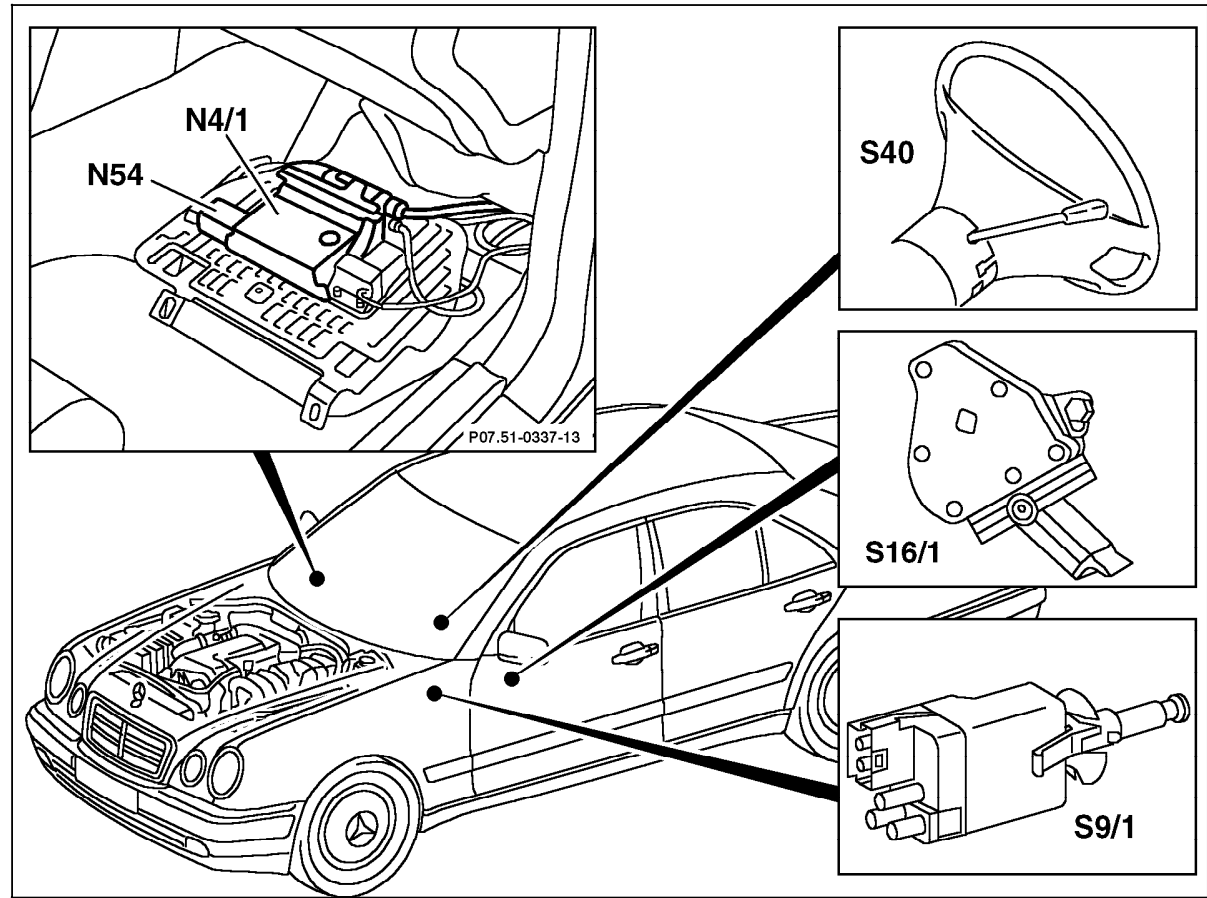


Figure 7

- N4/1 EA/CC/ISC control module
- S9/1 Stop lamp switch (4-pole)
- S16/1 Starter lock-out/backup lamp switch
- S40 CC switch
- V Decelerate/set
- B Accelerate/set
- SP Resume
- A Off

P30.20-0208-57