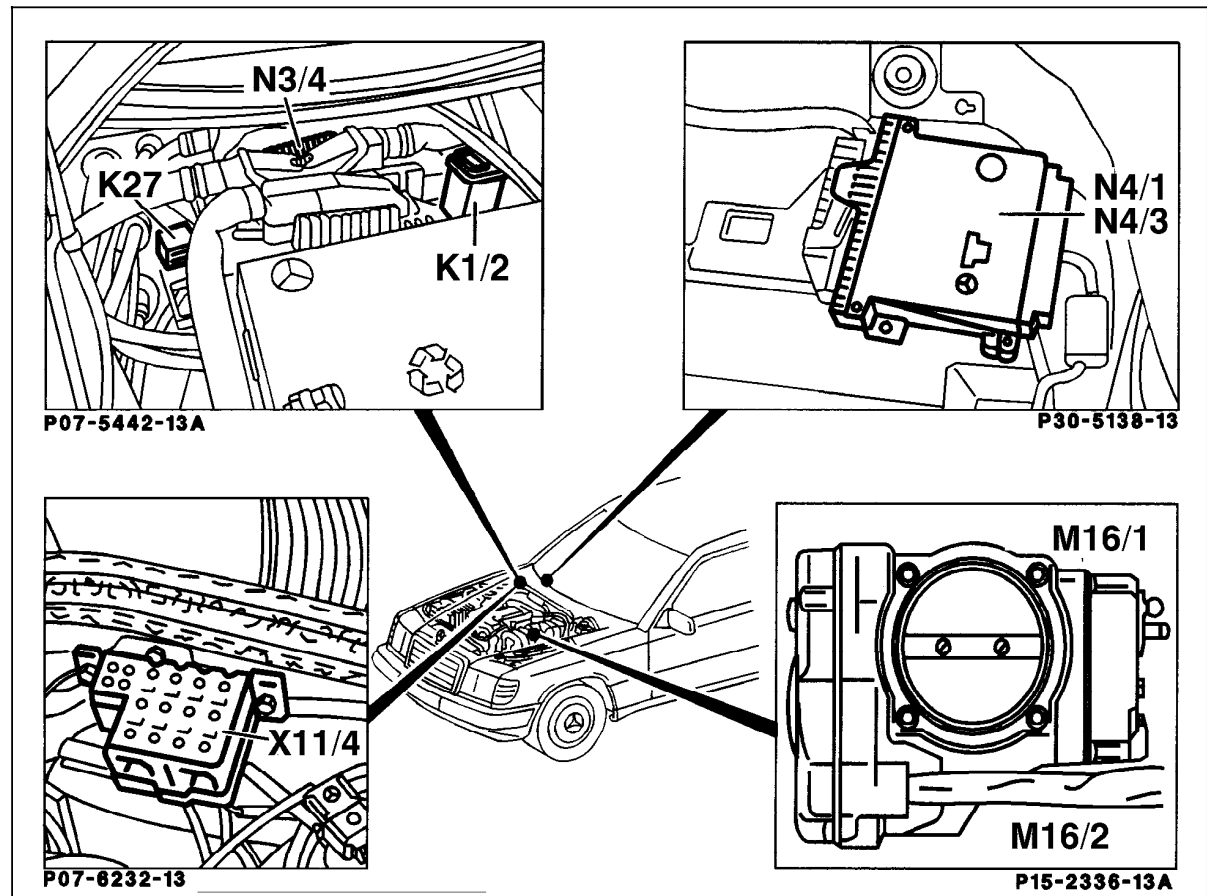


Electrical Test Program – Component Locations

Model 124



P30-5277-57

Figure 1

- K1/2    Overvoltage protection relay module (9-pole)
- M16/2    CC/ISC actuator
- N3/4    Engine control module (HFM-SFI)
- N4/3    CC/ISC control module
- X11/4    Data link connector (DTC readout)

Electrical Test Program – Component Locations

Model 124

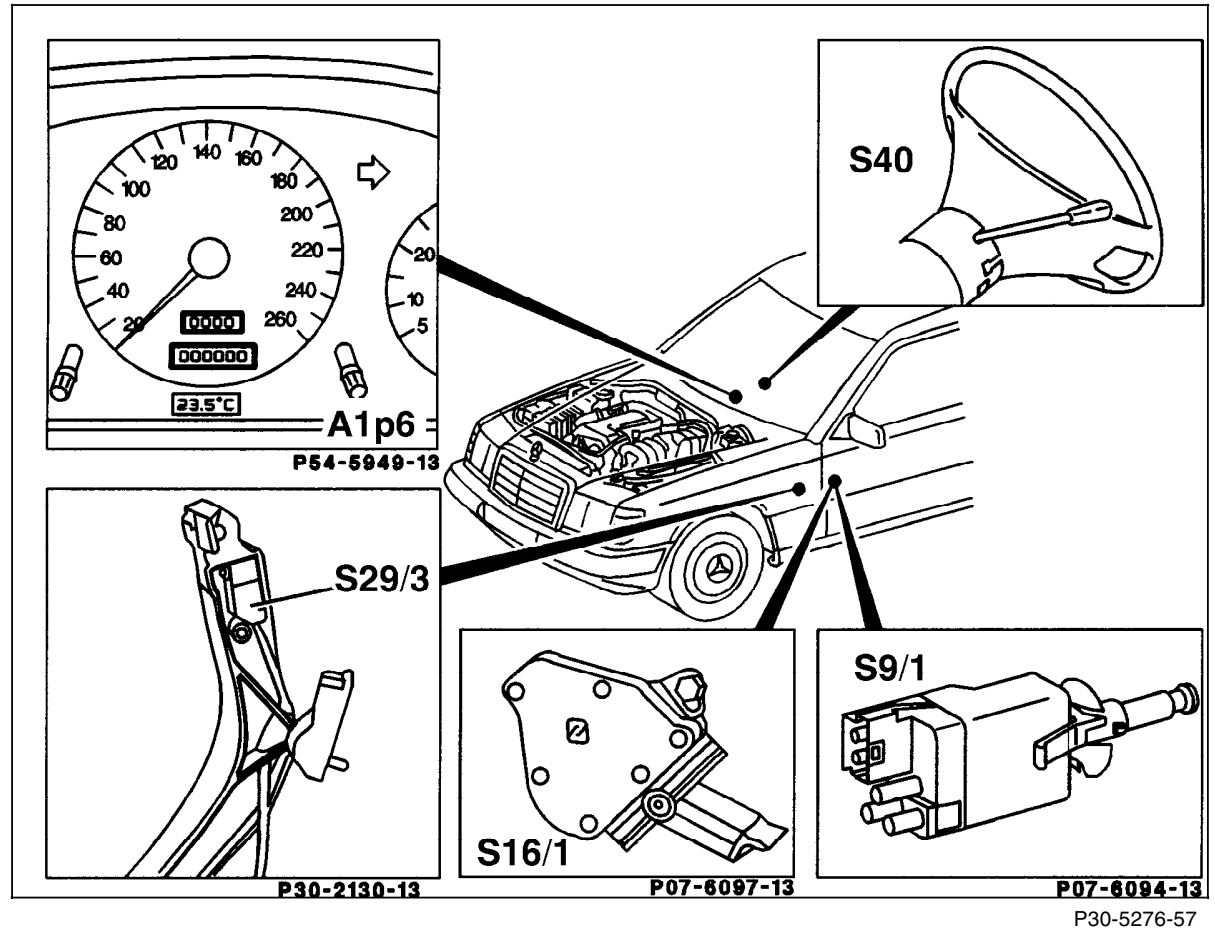
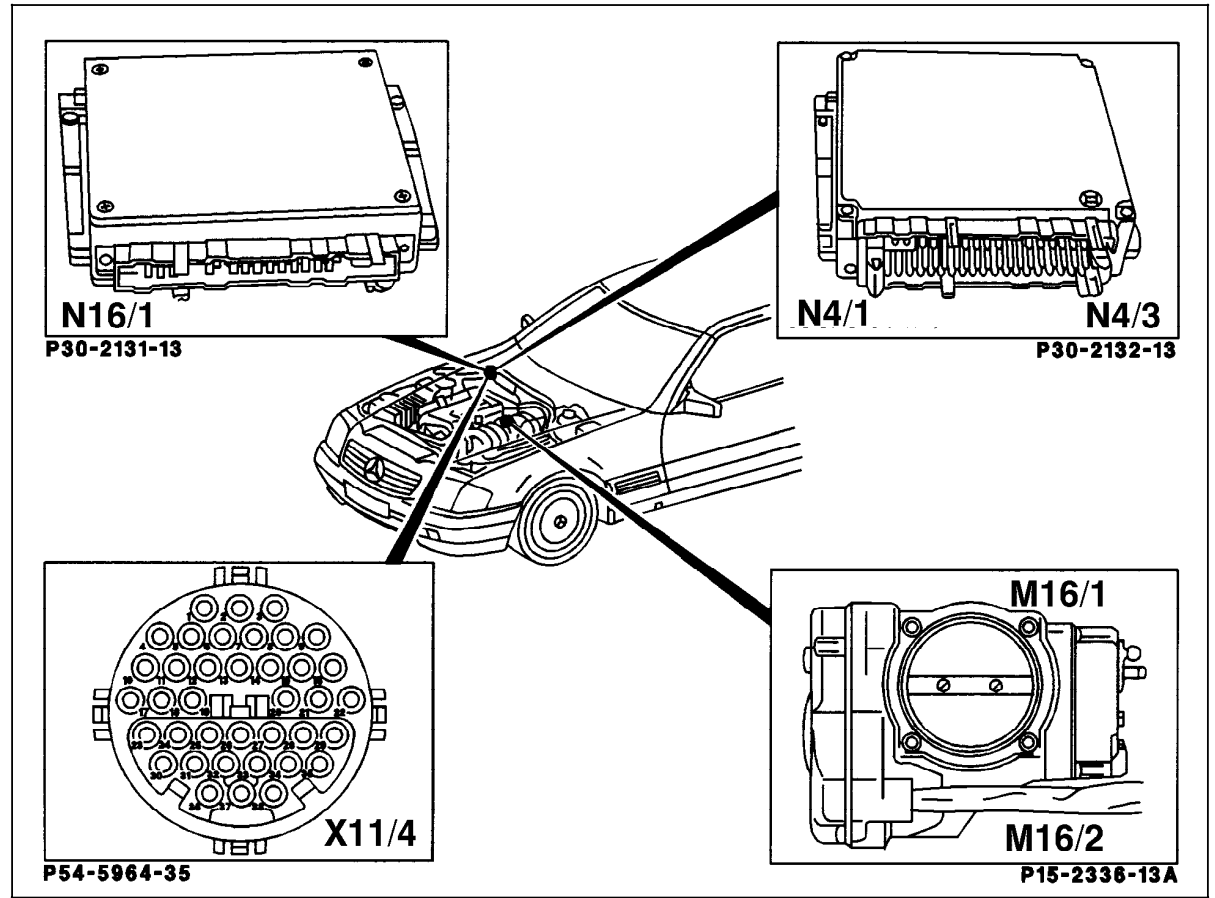


Figure 2

- A1p8 Electronic speedometer
- S9/1 Stop lamp switch
- S16/1 Starter lock-out/backup lamp switch
- S40 CC switch

Electrical Test Program – Component Locations

Models 129, 140



P30-5275-57

Figure 3

- M16/2 CC/ISC actuator
- N4/3 CC/ISC control module
- N16/1 Base module (BM)
- X11/4 Data link connector (DTC readout)

Electrical Test Program – Component Locations

Models 129, 140

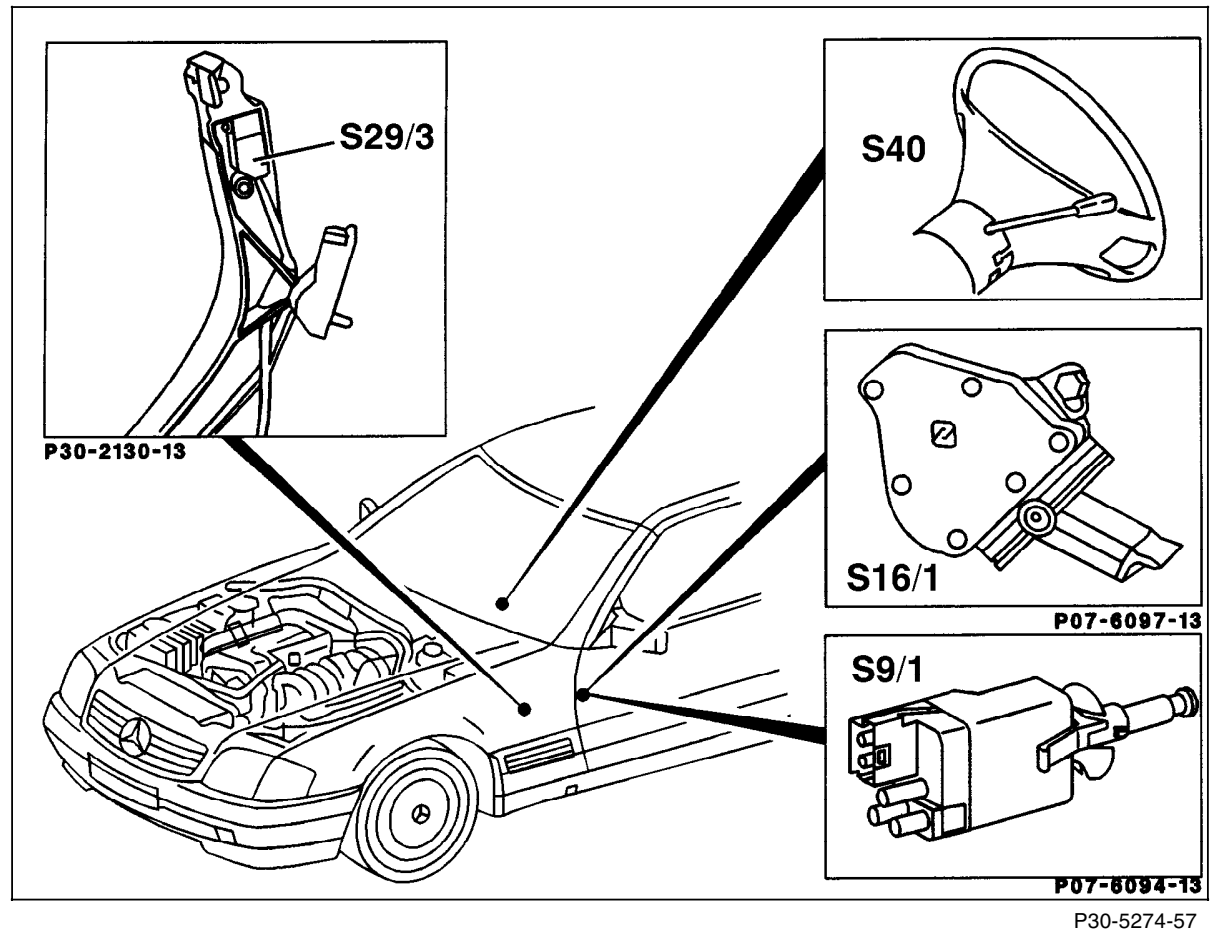


Figure 4

- S9/1 Stop lamp switch
- S16/1 Starter lock-out/backup lamp switch
- S40 CC switch
- V Decelerate/set
- B Accelerate/set
- SP Resume
- A Off

Electrical Test Program – Component Locations

Model 202

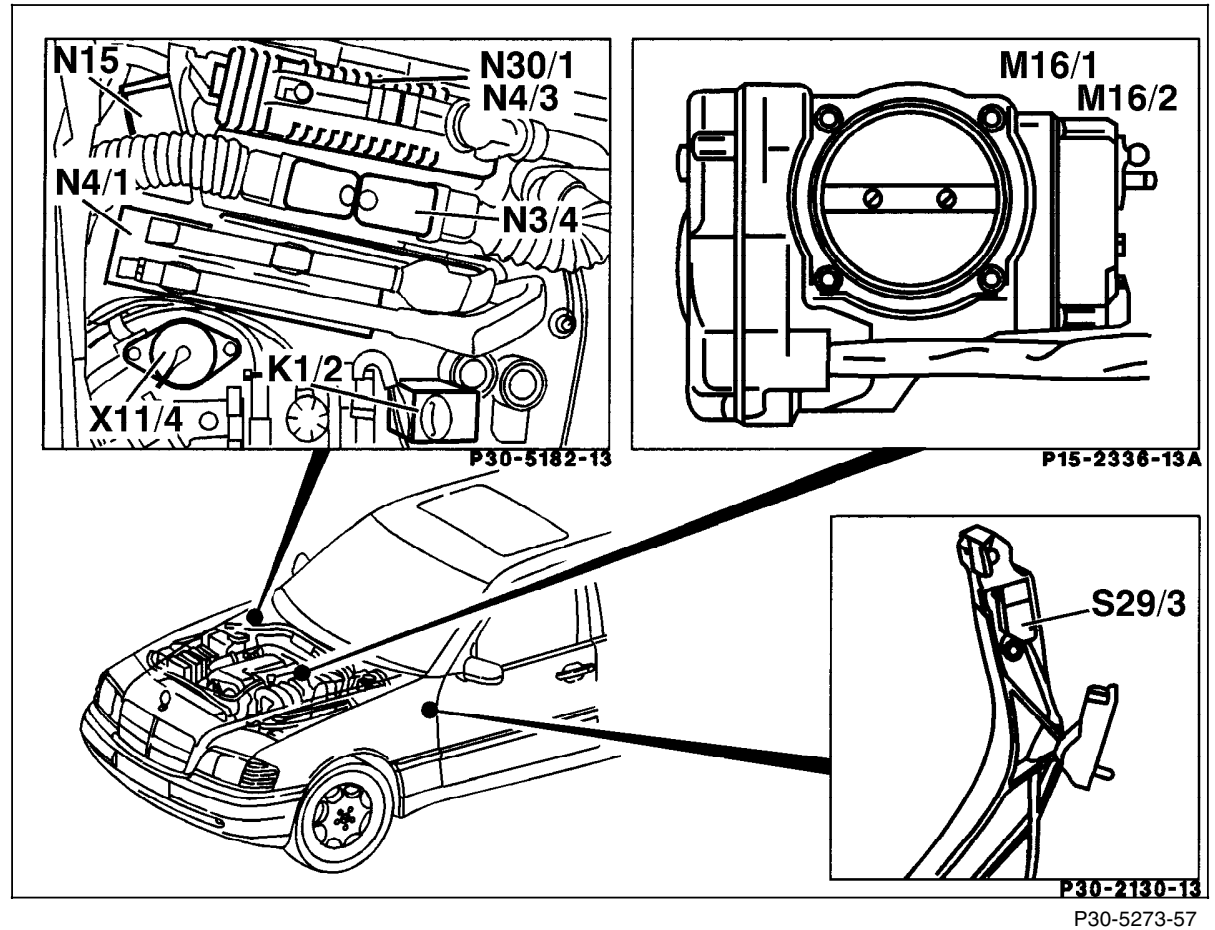


Figure 5

- K1/2    Overvoltage protection relay module
- M16/2    CC/ISC actuator
- N3/4    Engine control module (HFM-SFI)
- N4/3    CC/ISC control module
- N15    Kickdown cut-out relay module
- S29/3    CTP switch
- X11/4    Data link connector (DTC readout)

Electrical Test Program – Component Locations

Model 202

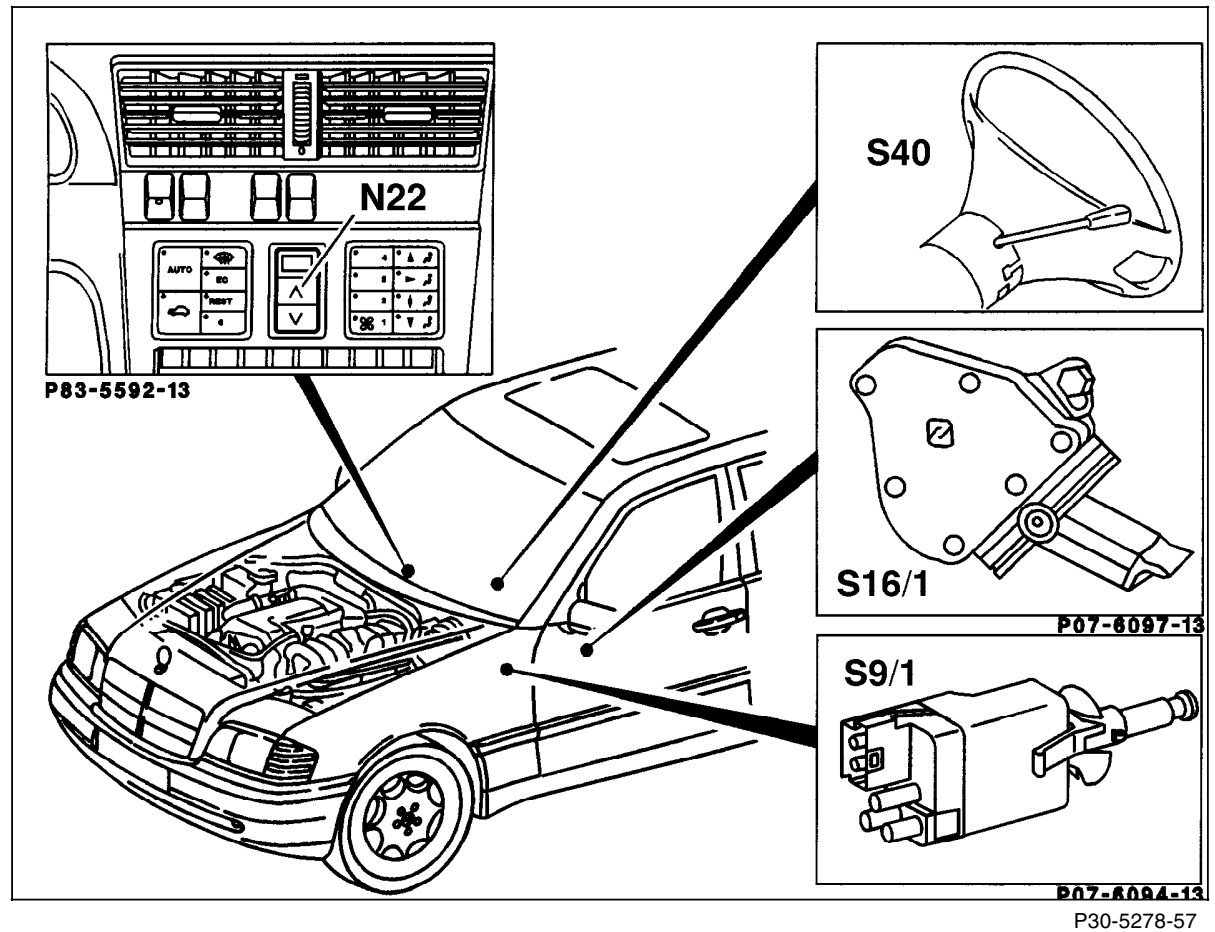


Figure 6

- N22 A/C pushbutton control module
- S9/1 Stop lamp switch
- S16/1 Starter lock-out/backup lamp switch
- S40 CC switch
- V Decelerate/set
- B Accelerate/set
- SP Resume
- A Off