

Electrical Test Program – Component Locations

Components on engine
Model 129

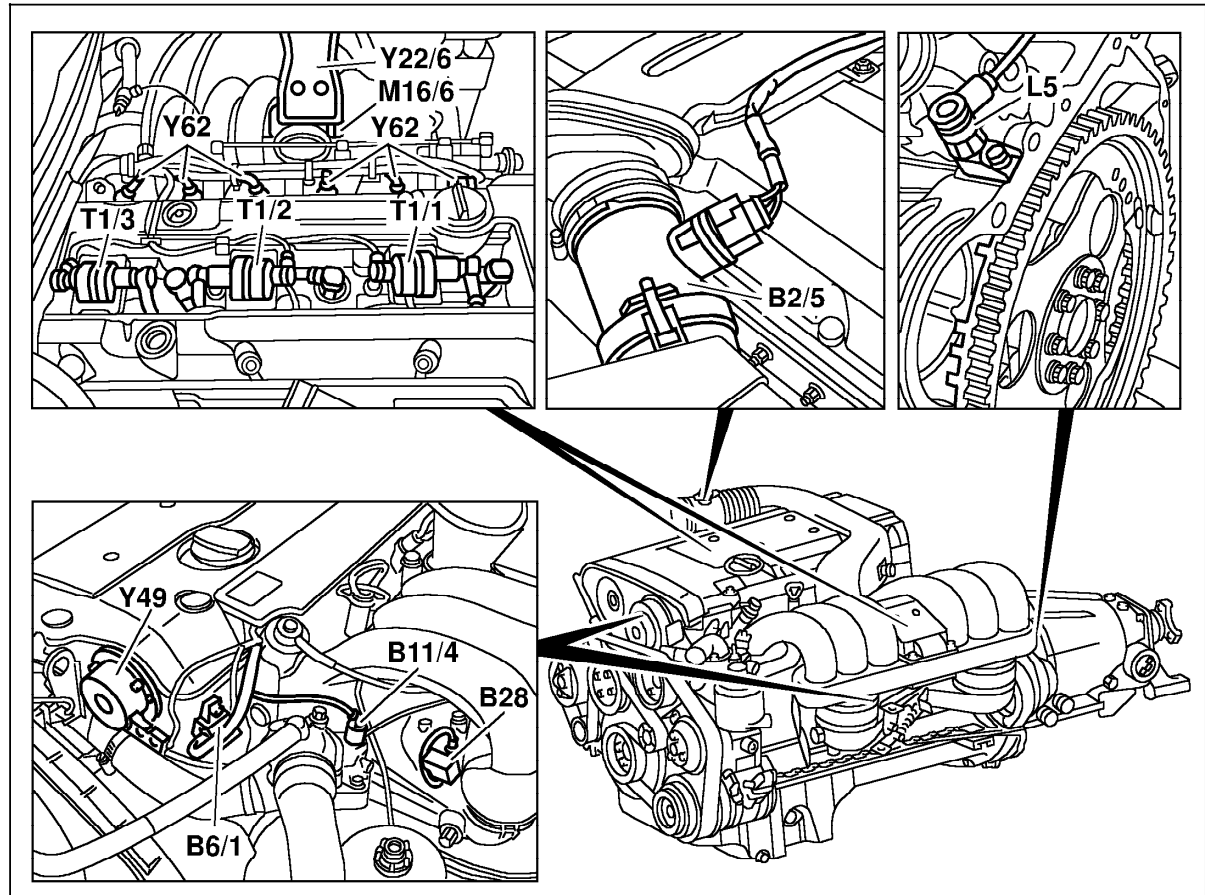


Figure 1

- B2/5 Hot film MAF sensor
- B6/1 Camshaft Hall-effect sensor
- B11/4 ECT sensor
- B28 Pressure sensor (only USA)
- L5 CKP sensor
- M16/1 EA/CC/ISC actuator
- T1/1 Ignition coil cylinders 2 and 5
- T1/2 Ignition coil cylinders 3 and 4
- T1/3 Ignition coil cylinders 1 and 6
- Y22/6 Resonance intake manifold switchover valve
- Y49 Adjustable camshaft timing solenoid
- Y62 Injectors

P07.61-0281-06

Electrical Test Program – Component Locations

Components on engine
Model 129

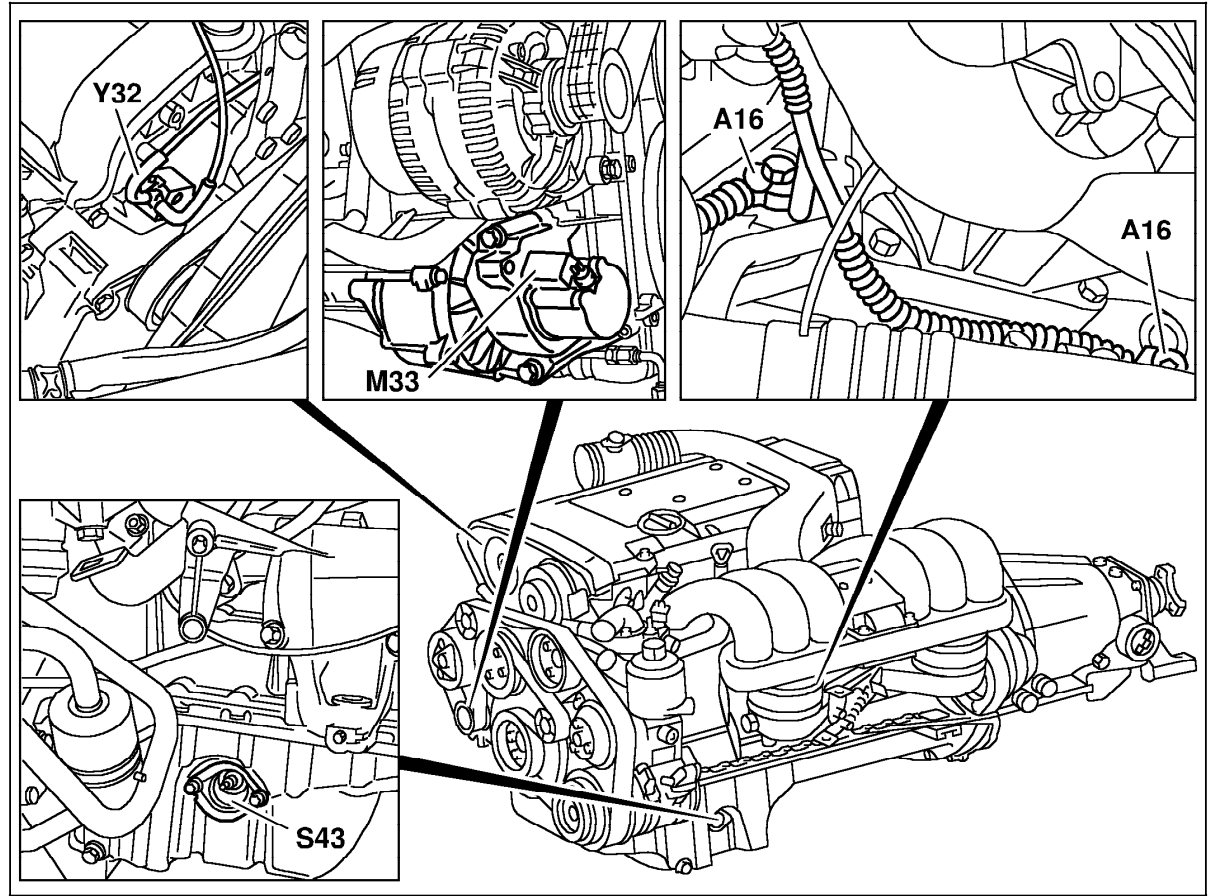


Figure 2

- A16 Knock sensors
- M33 AIR pump (only USA J TAW ROK)
- S43 Oil level switch
- Y32 AIR pump switchover valve (only USA J TAW ROK)

P07.61-0280-06

Electrical Test Program – Component Locations

Engine Compartment
Model 129

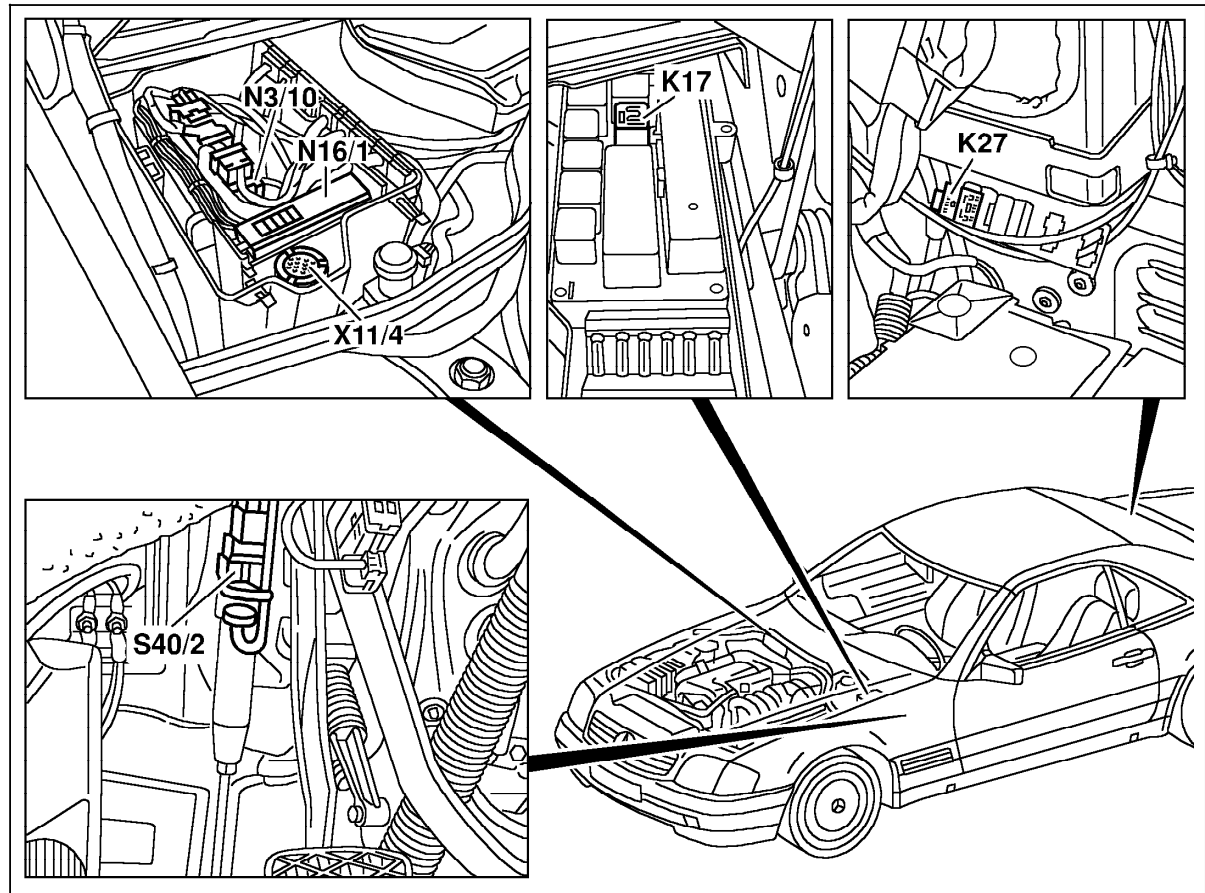


Figure 3

- K17 AIR relay module (only **USA** **J** **TAW** **ROK**)
- K27 FP relay module
- N3/10 Engine control module (ME-SFI)
- N16/1 Base module (BM)
- S40/2 Clutch pedal switch (not **USA**)
- X11/4 Data link connector (DTC readout) (38-pole)

P07.61-0285-06

Electrical Test Program – Component Locations

Engine Compartment
Model 129

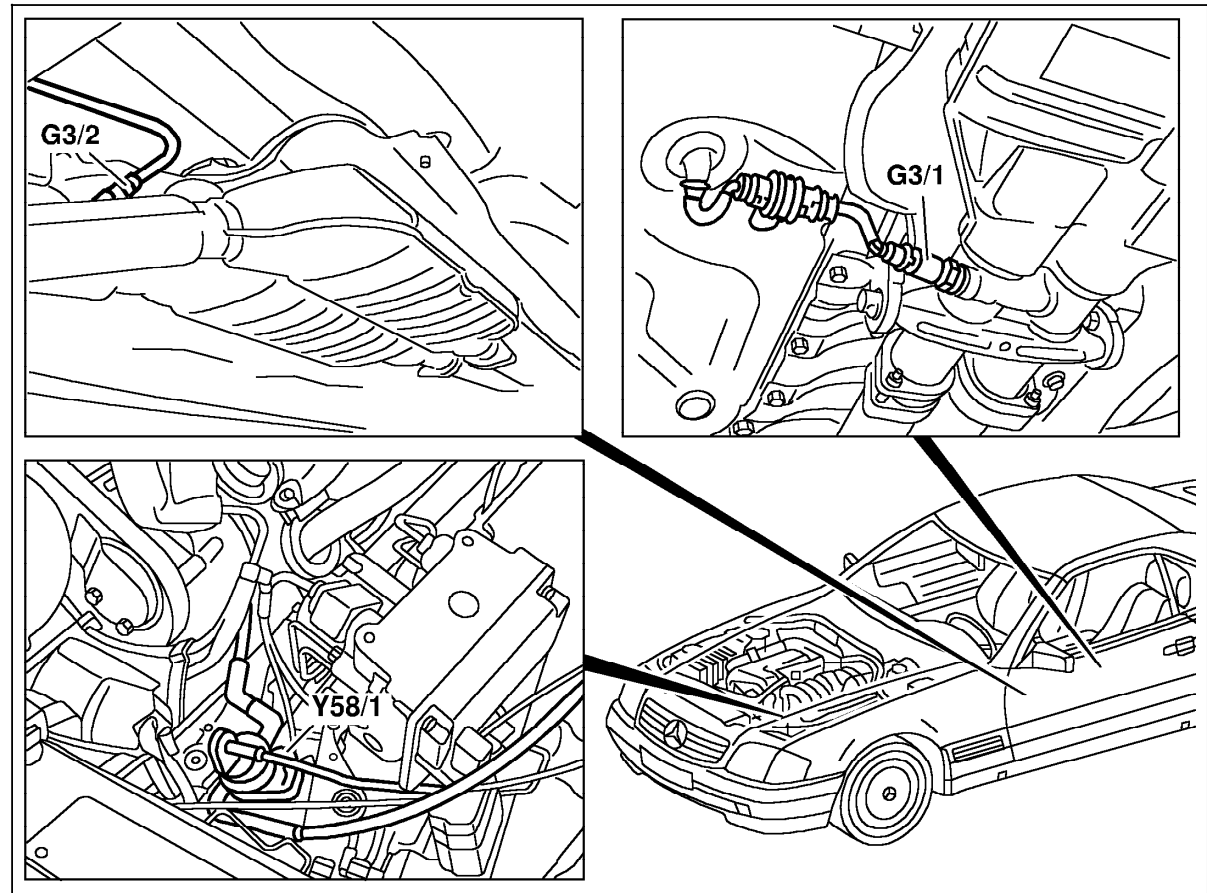


Figure 4

- G3/1 O2S 2 (after TWC) (only USA)
- G3/2 O2S 1 (before TWC)
- Y58/1 Purge control valve

P07.61-0286-06

Electrical Test Program – Component Locations

Engine Compartment
Model 129

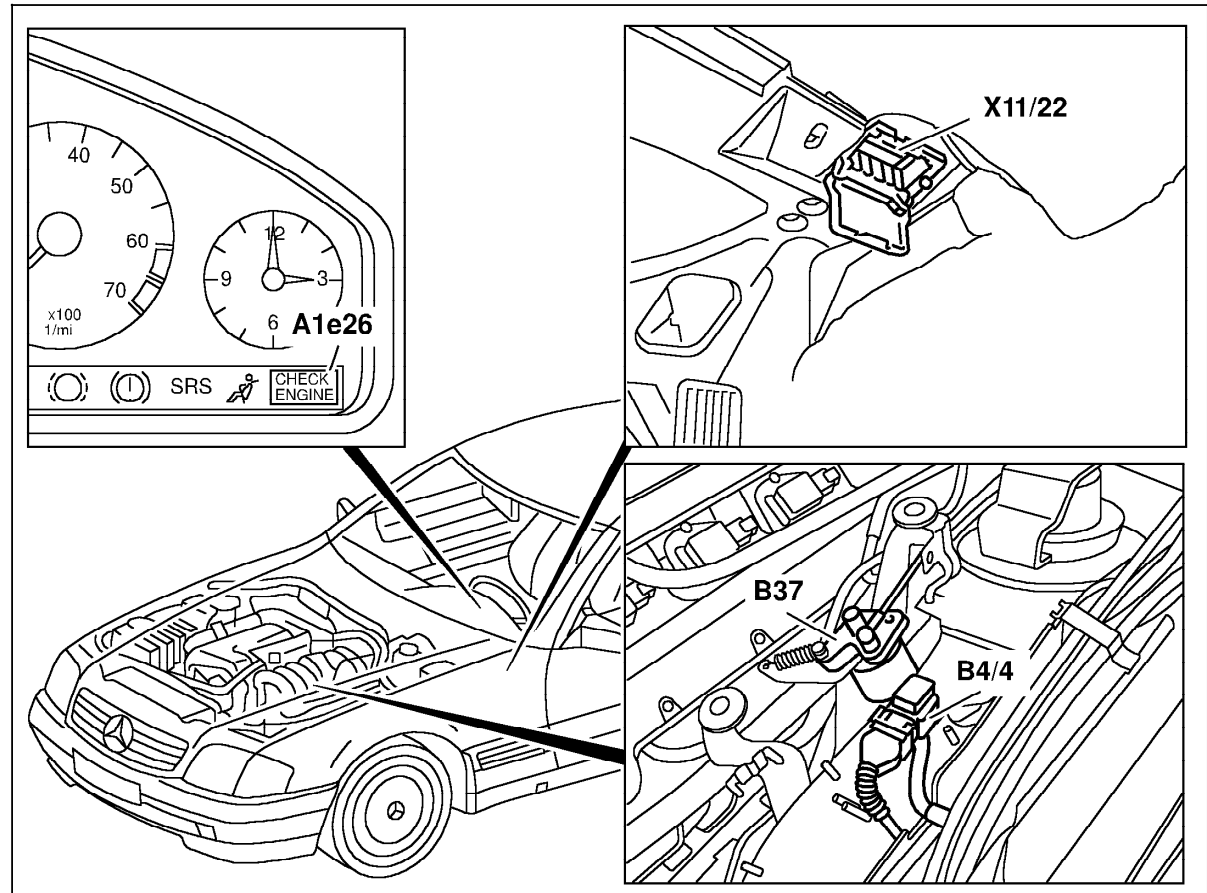


Figure 5

- A1e26 "CHECK ENGINE" MIL (only USA)
- B4/4 Purge monitoring pressure sensor (only USA, up to 08/97)
- B37 Pedal value sensor
- X11/22 Diagnostic module (OBD II) generic scan tool connector (only USA)

P07.61-0287-06

Electrical Test Program – Component Locations

Trunk area
Model 129

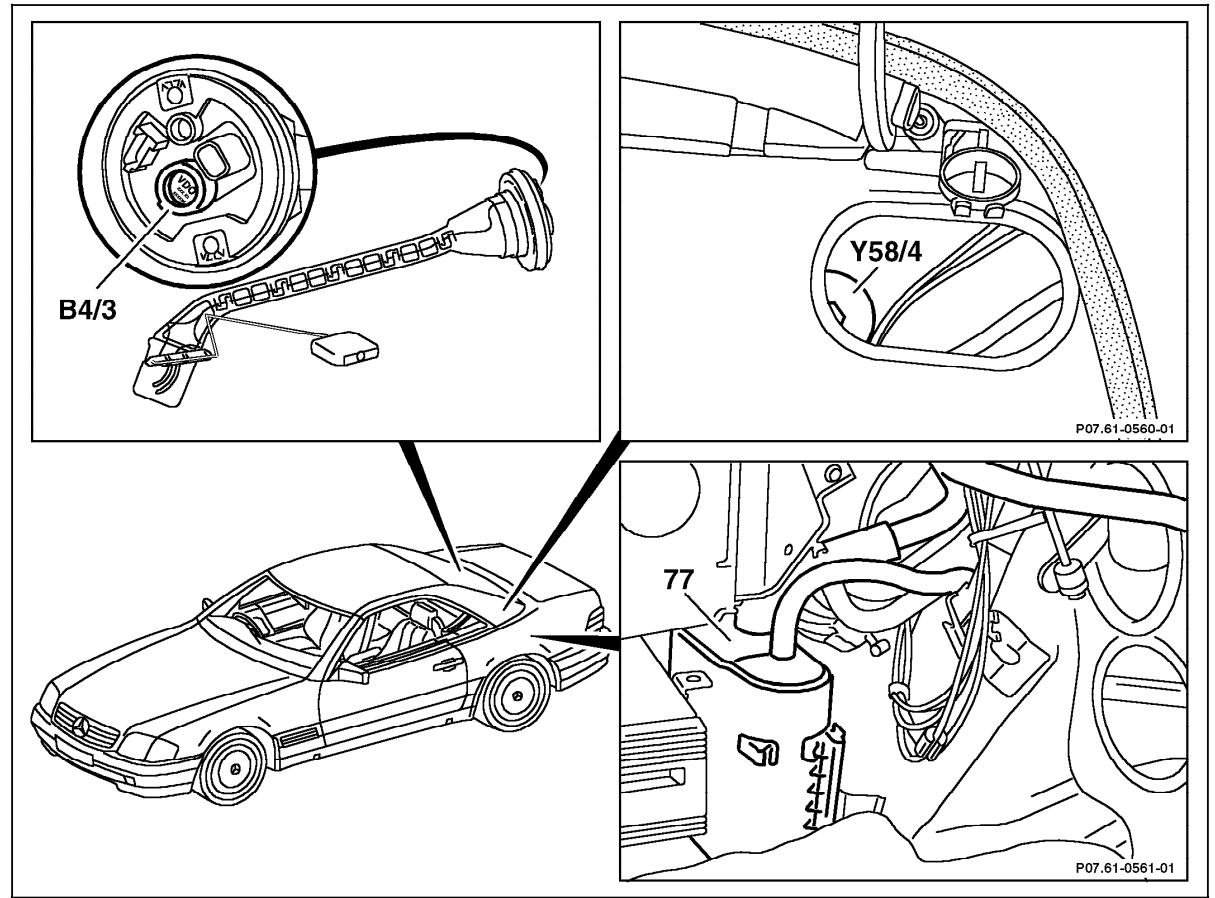


Figure 6

- B4/3 Fuel tank pressure sensor (only USA)
- Y58/4 Activated charcoal canister shut-off valve
(only USA) (as of 09/97)
- 77 Active charcoal canister

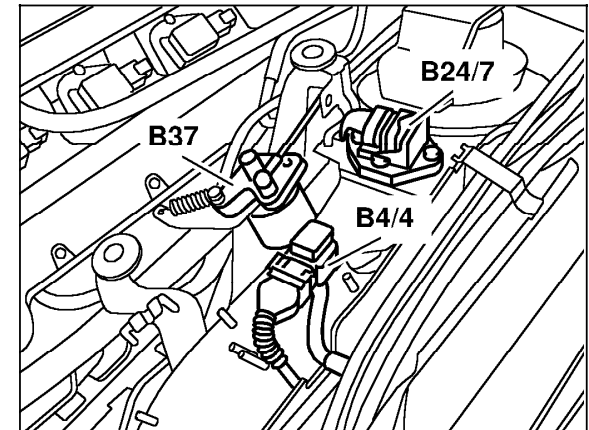
P07.61-0552-06

Electrical Test Program – Component Locations

Trunk area
Model 129

Figure 7

- B4/4 Fuel tank emissions monitoring pressure sensor (only USA)
- B24/7 Body acceleration sensor (up to 05/96) (only USA)
- B37 Pedal value sensor (only USA)



P07.61-0576-01

Electrical Test Program – Component Locations

Components on engine
Model 140

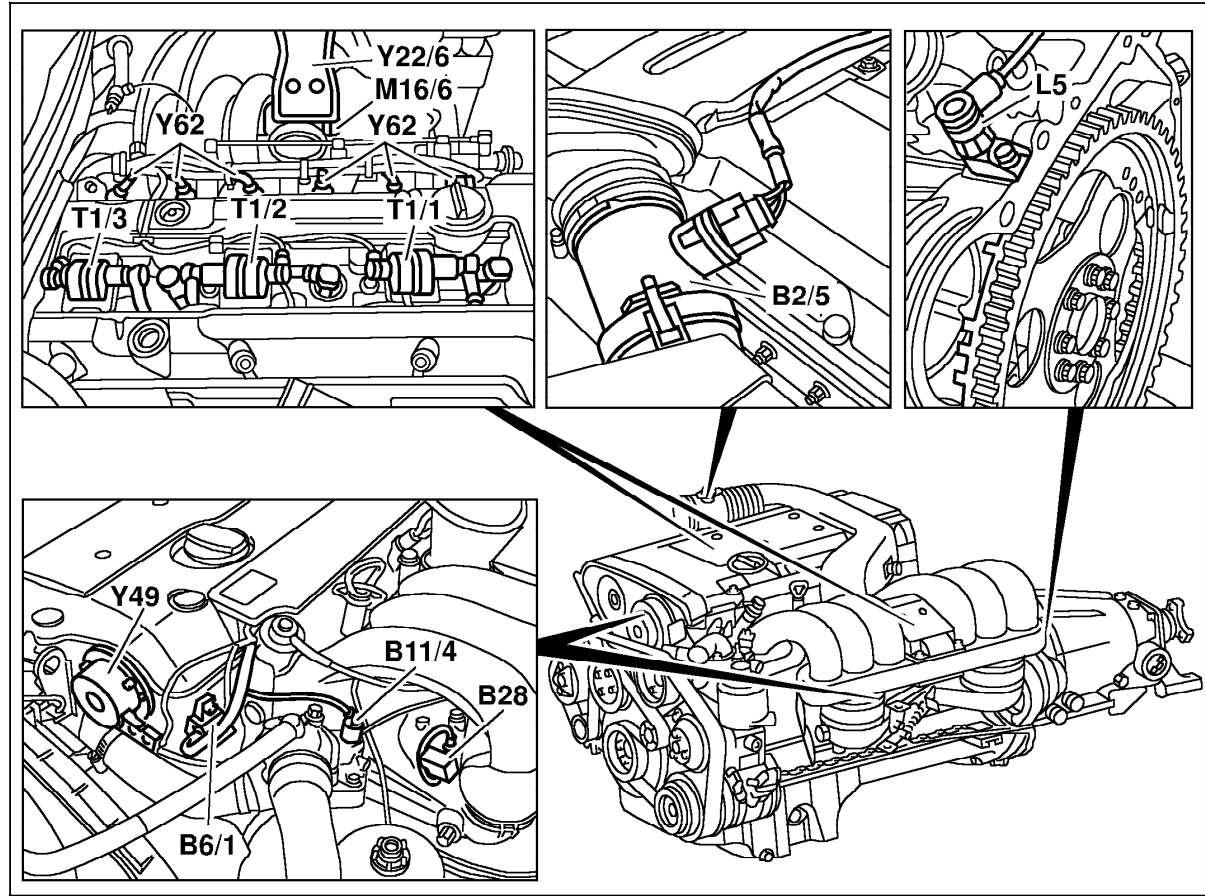


Figure 8

- B2/5 Hot film MAF sensor
- B6/1 Camshaft Hall-effect sensor
- B11/4 ECT sensor
- B28 Pressure sensor (only USA)
- L5 CKP sensor
- M16/1 EA/CC/ISC actuator
- T1/1 Ignition coil cylinders 2 and 5
- T1/2 Ignition coil cylinders 3 and 4
- T1/3 Ignition coil cylinders 1 and 6
- Y22/6 Resonance intake manifold switchover valve
- Y49 Adjustable camshaft timing solenoid
- Y62 Injectors

P07.61-0281-06

Electrical Test Program – Component Locations

Components on engine
Model 140

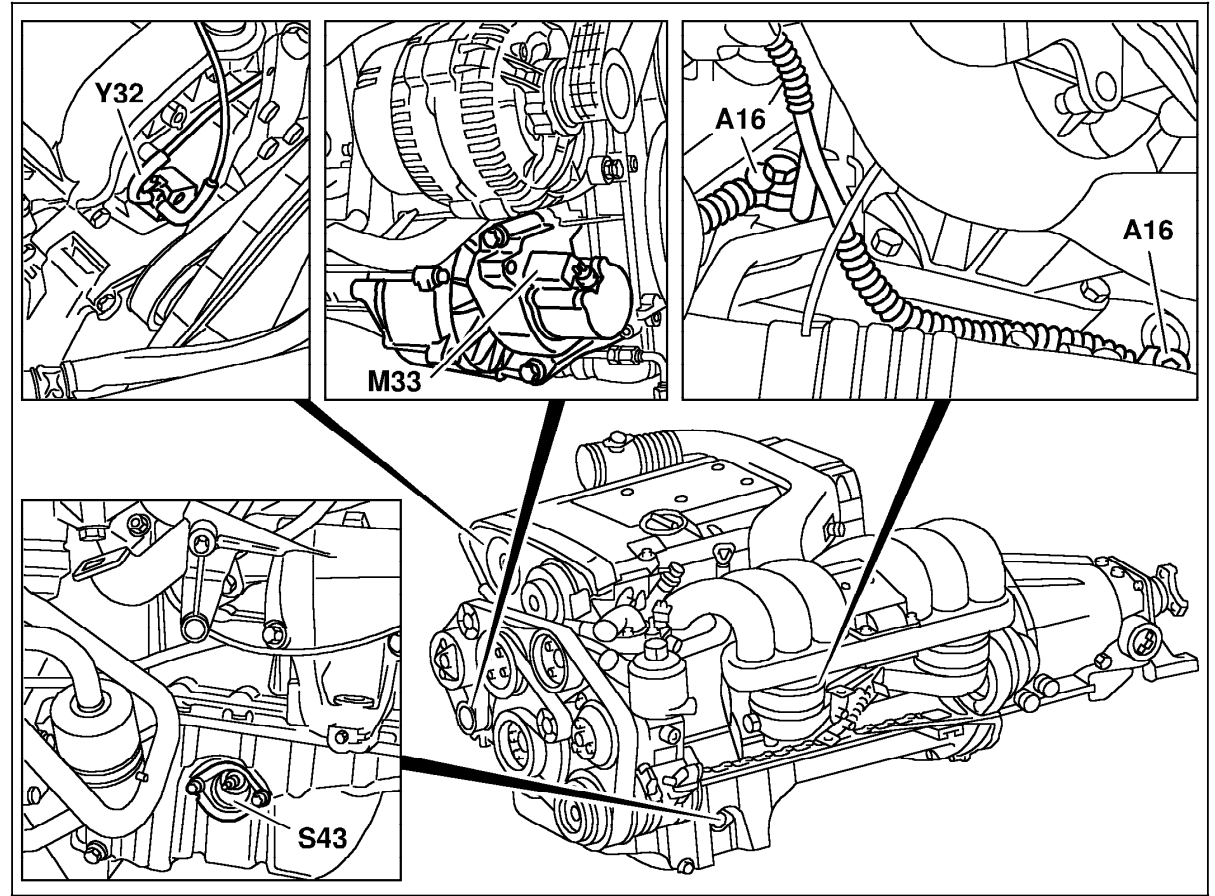


Figure 9

- A16 Knock sensors
- M33 AIR pump (only USA J TAW ROK)
- S43 Oil level switch
- Y32 AIR pump switchover valve (only USA J TAW ROK)

P07.61-0280-06

Electrical Test Program – Component Locations

Engine Compartment
Model 140

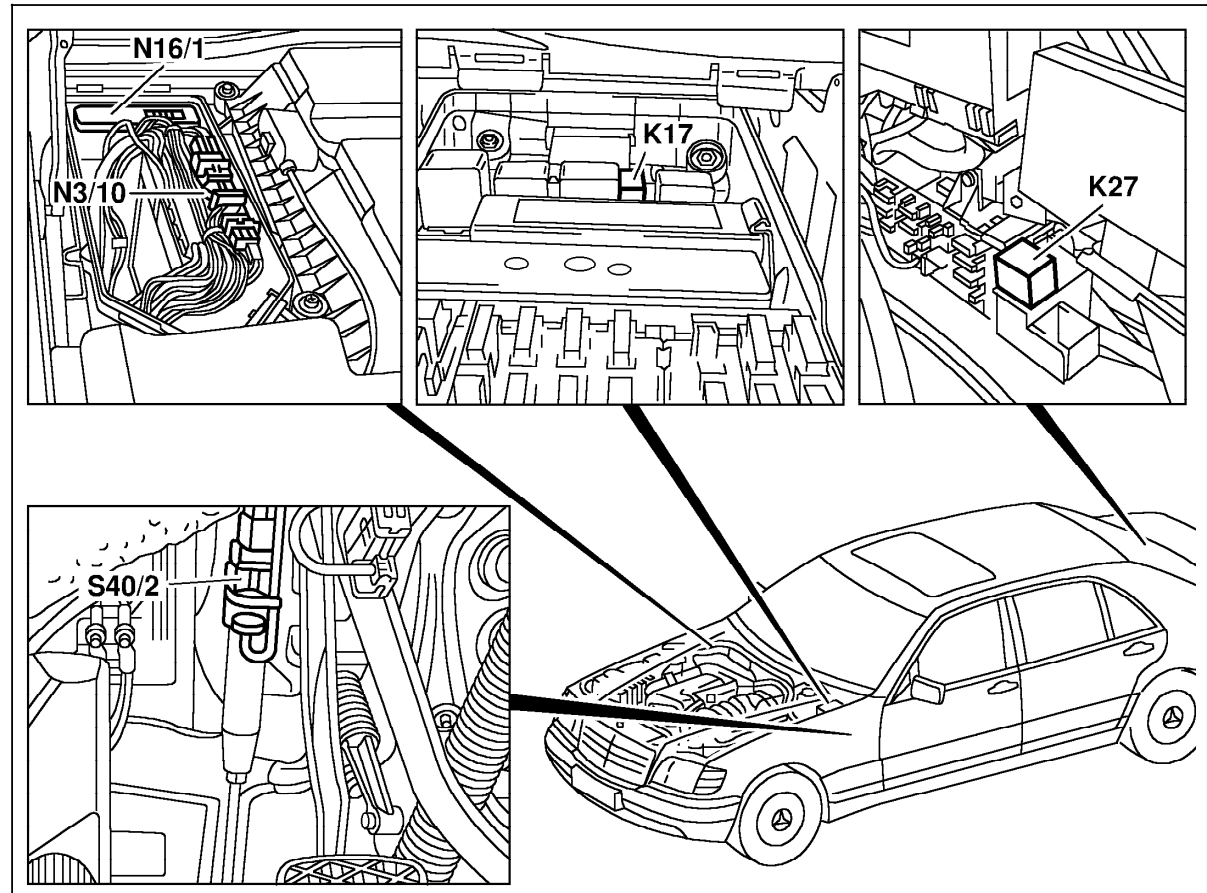


Figure 10

- K17 AIR relay module (only USA)
- K27 FP relay module
- N3/10 Engine control module (ME-SFI)
- N16/1 Base module (BM)
- S40/2 Clutch pedal switch (not USA)

P07.61-0282-06

Electrical Test Program – Component Locations

Engine Compartment
Model 140

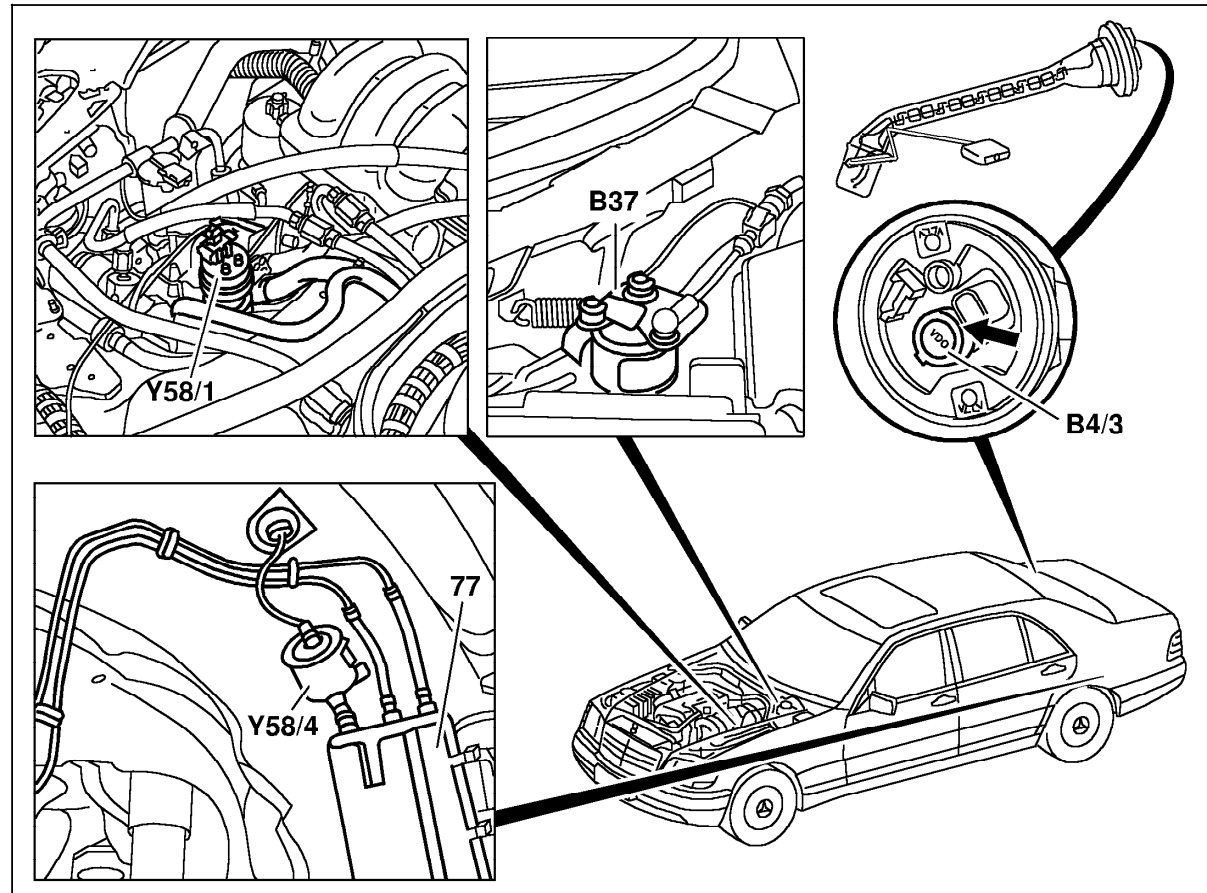


Figure 11

- B4/3 Fuel tank pressure sensor (only USA)
- B37 Pedal value sensor
- Y58/1 Purge control valve
- Y58/4 Activated charcoal canister shut-off valve (only USA)
- 77 Active charcoal canister

P07.61-0283-06

Electrical Test Program – Component Locations

Engine Compartment
Model 140

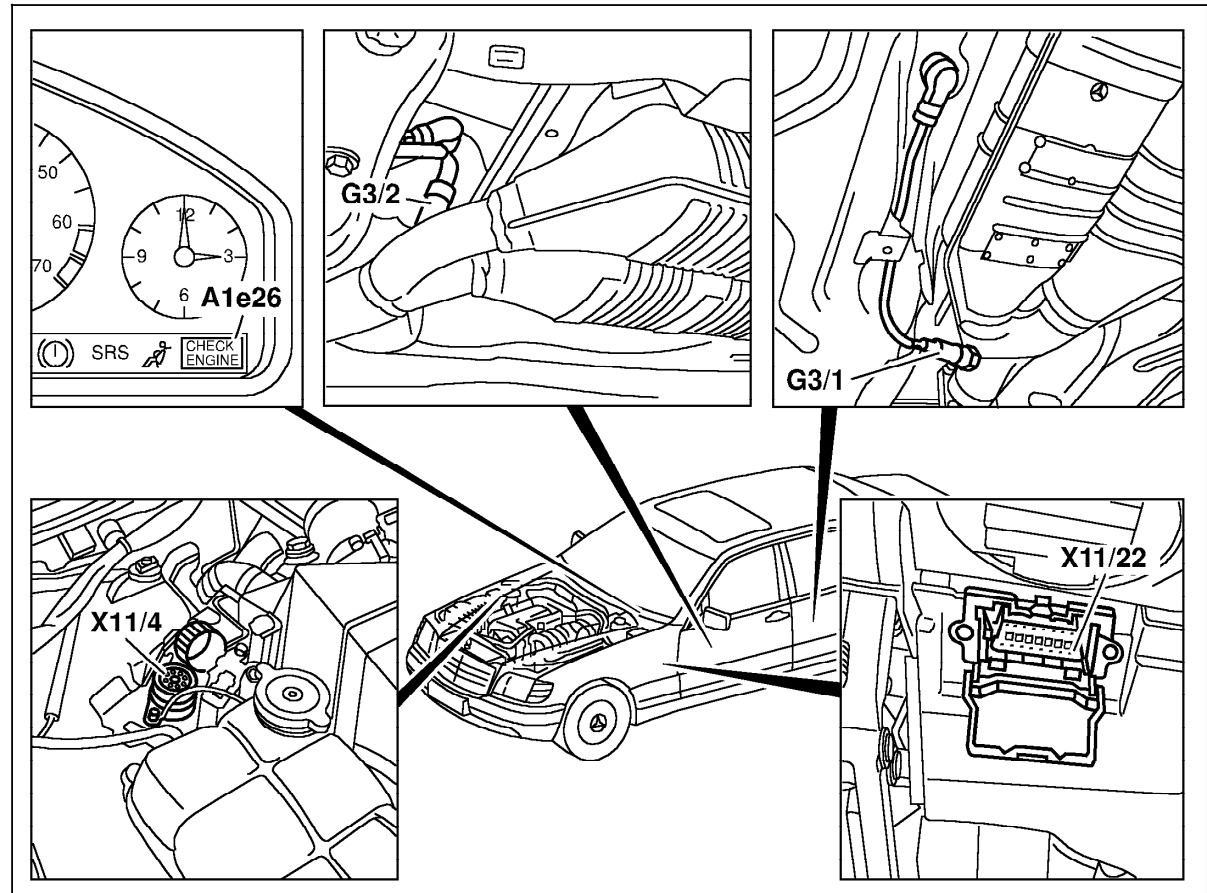


Figure 12

- A1e26 CHECK ENGINE MIL (only USA)
- G3/1 O2S 2 (after TWC) (only USA)
- G3/2 O2S 1 (before TWC)
- X11/4 Data link connector (DTC readout)
- X11/22 Diagnostic module (OBD II) generic scan tool connector (only USA)

P07.61-0284-06

Electrical Test Program – Component Locations

Trunk area
Model 140

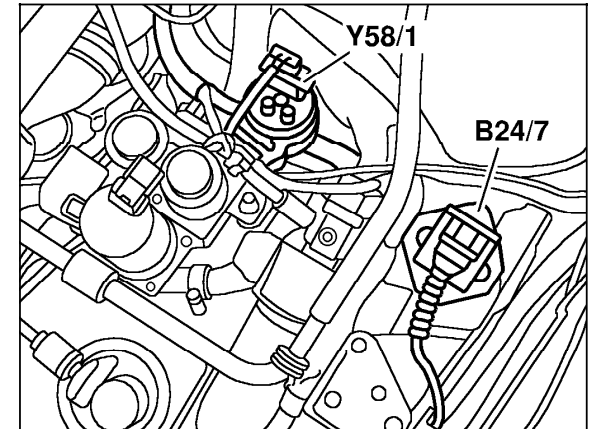


Figure 13

B24/7 Body acceleration sensor (up to 05/96)
Y58/1 Purge control valve

P07.61-0577-01

Electrical Test Program – Component Locations

Components on engine
Model 202

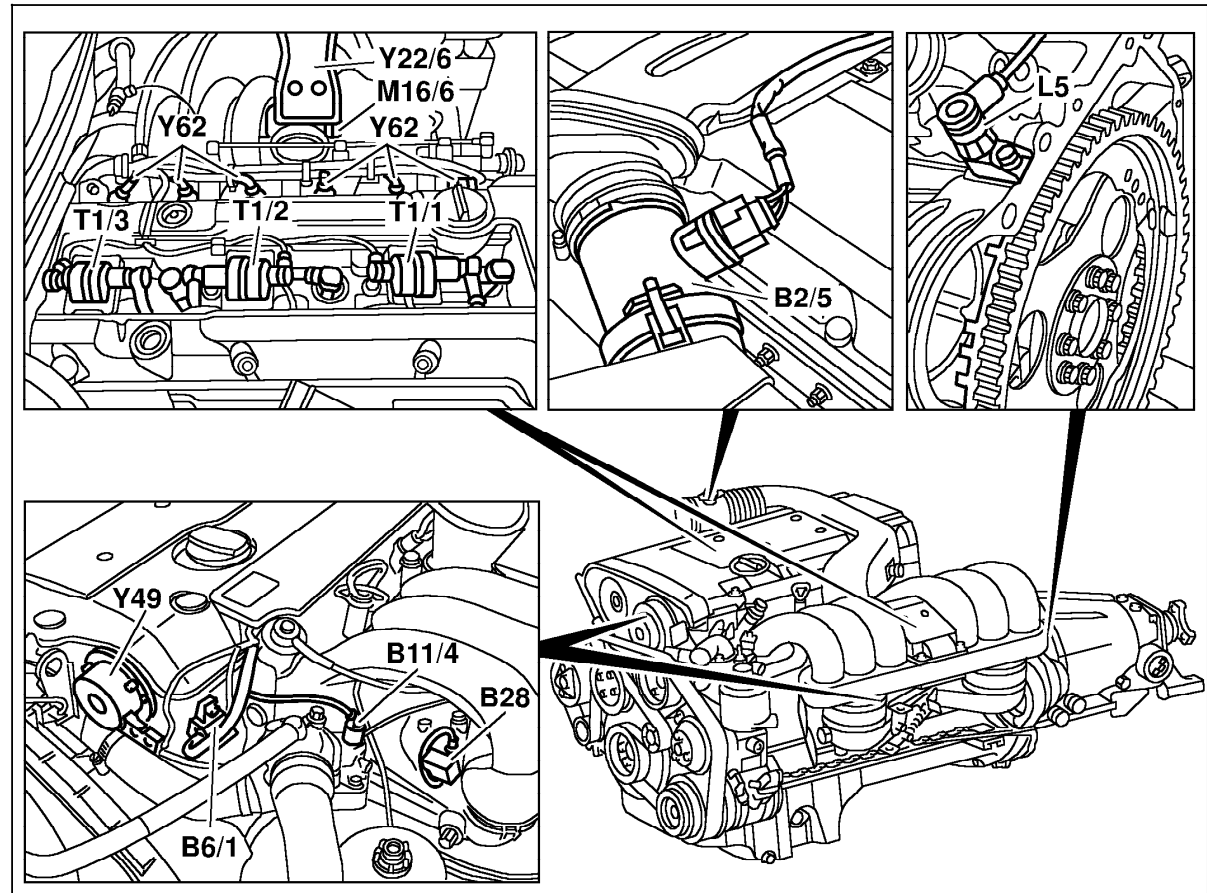


Figure 14

- B2/5 Hot film MAF sensor
- B6/1 Camshaft Hall-effect sensor
- B11/4 ECT sensor
- B28 Pressure sensor (only USA)
- L5 CKP sensor
- M16/1 EA/CC/ISC actuator
- T1/1 Ignition coil cylinders 2 and 5
- T1/2 Ignition coil cylinders 3 and 4
- T1/3 Ignition coil cylinders 1 and 6
- Y22/6 Resonance intake manifold switchover valve
- Y49 Adjustable camshaft timing solenoid
- Y62 Injectors

P07.61-0281-06

Electrical Test Program – Component Locations

Components on engine
Model 202

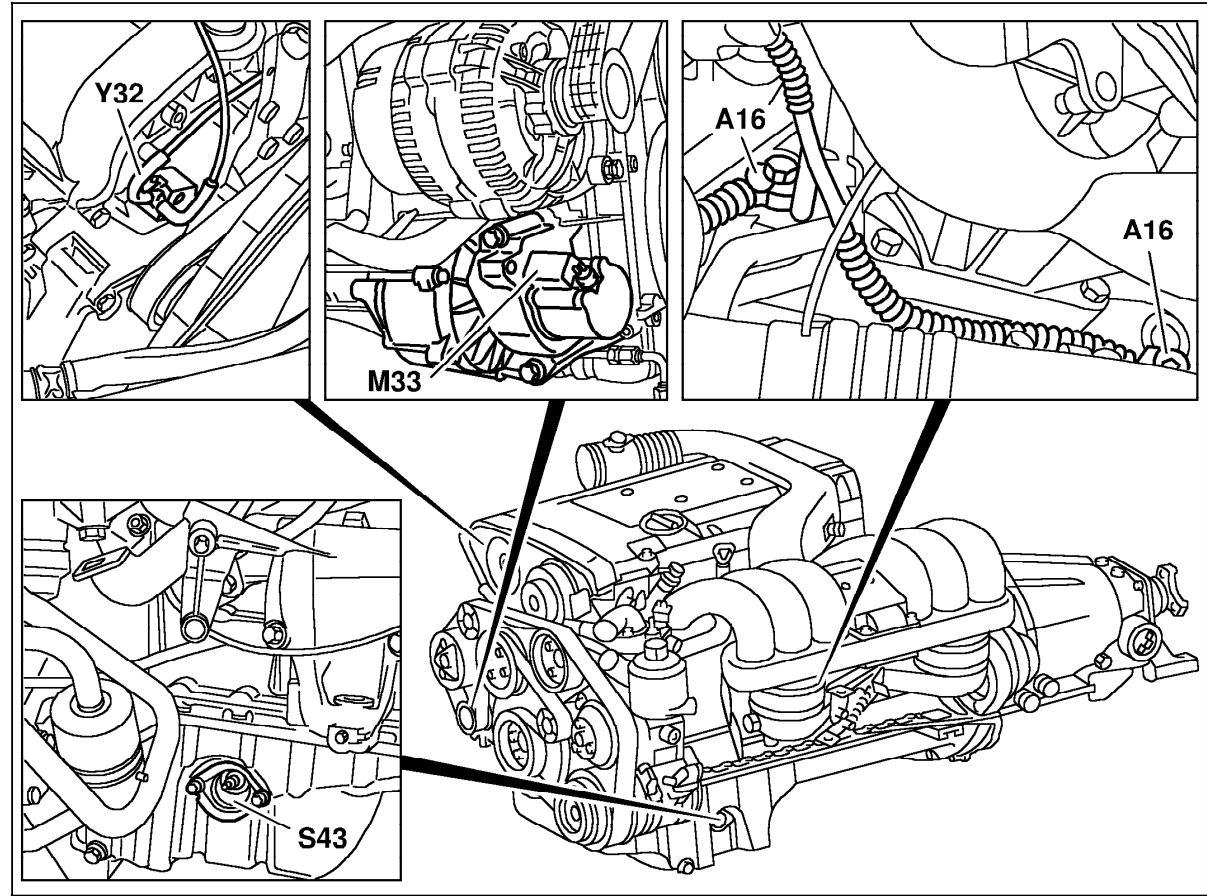


Figure 15

- A16 Knock sensors
- M33 AIR pump (only USA J TAW ROK)
- S43 Oil level switch
- Y32 AIR pump switchover valve (only USA J TAW ROK)

P07.61-0280-06

Electrical Test Program – Component Locations

Engine Compartment
Model 202

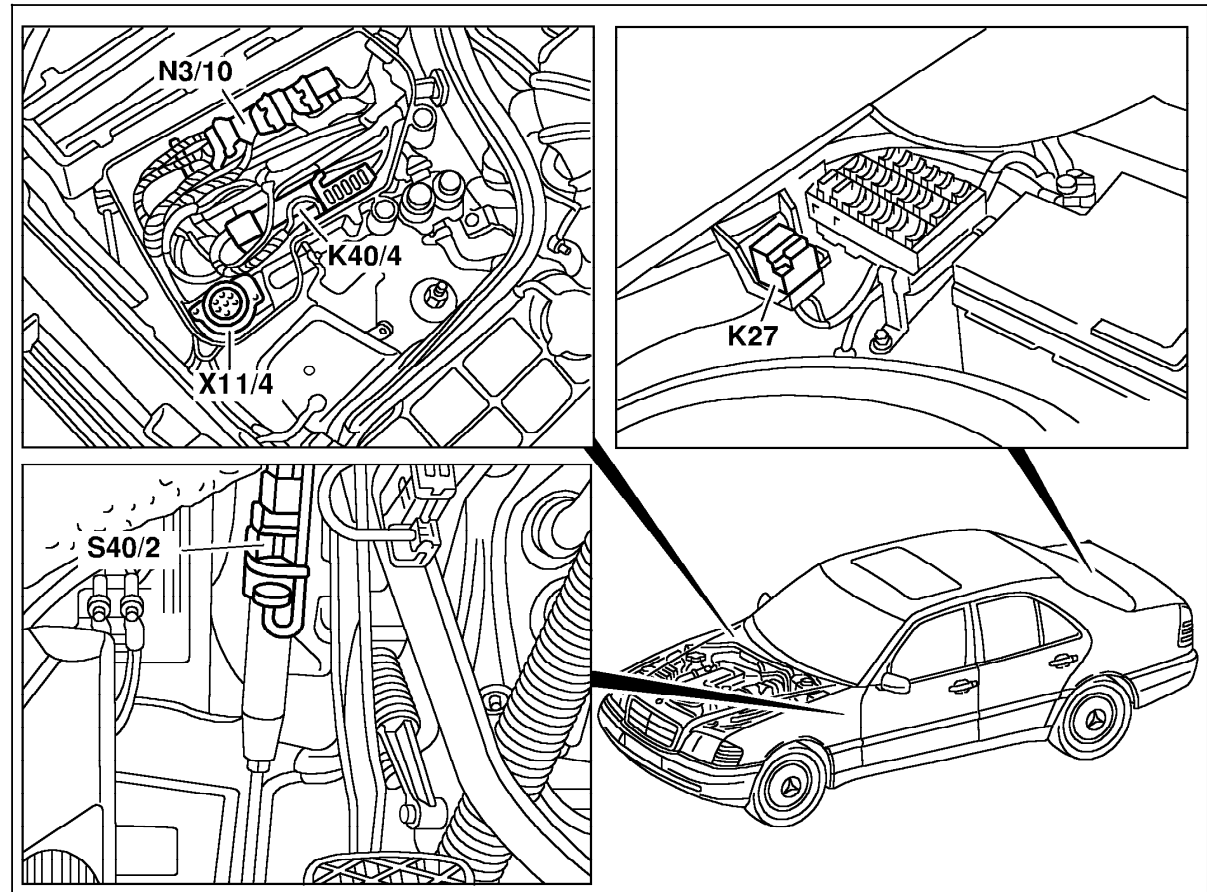


Figure 16

- K27 FP relay module
- K40/4 Passenger-side fuse and relay module box with:
Starter relay
Relay module, AIR pump (only USA)
- N3/10 Engine control module (ME-SFI)
- S40/2 Clutch pedal switch (MT only) (not USA)
- X11/4 Data link connector (DTC readout)

P07.61-0301-06

Electrical Test Program – Component Locations

Engine Compartment
Model 202

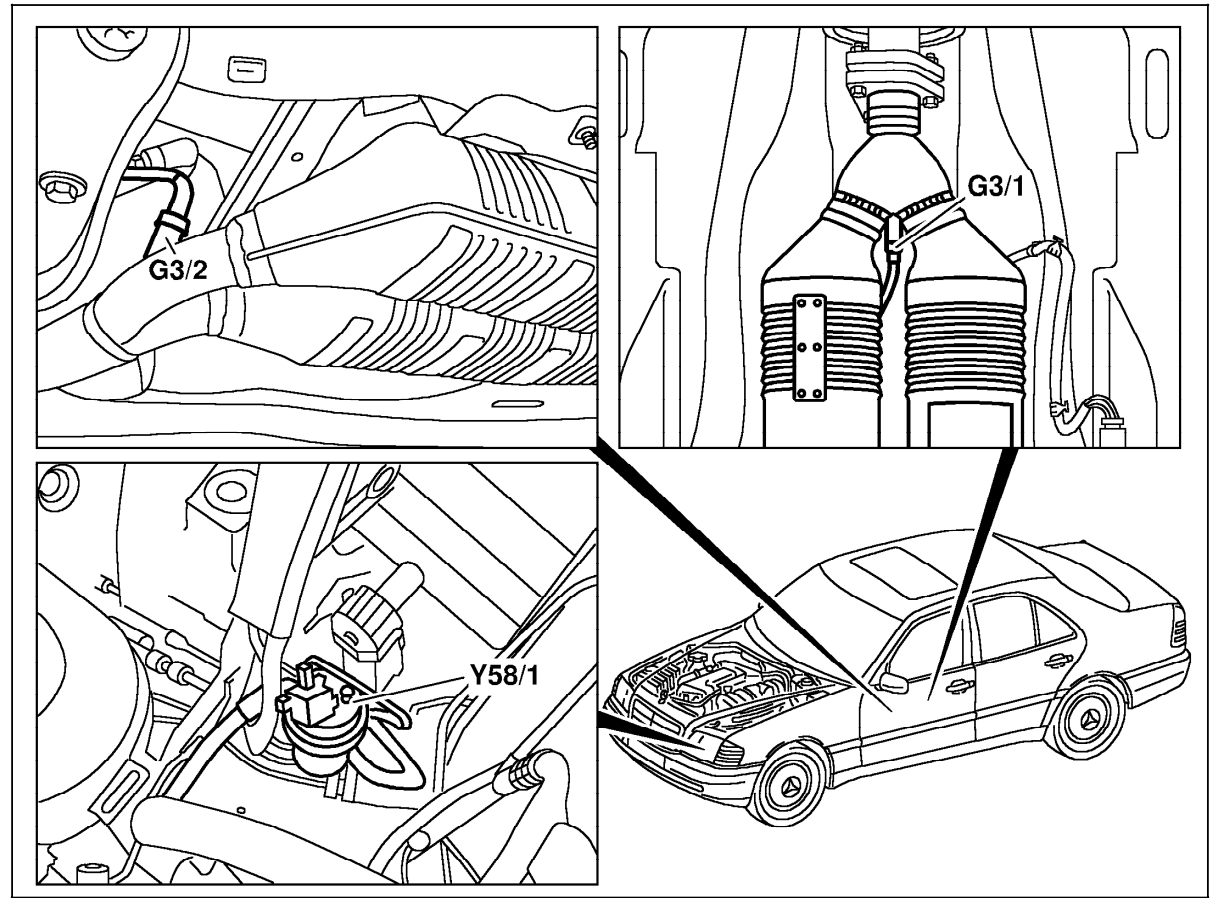


Figure 17

- G3/1 O2S 2 (after TWC) (only USA)
- G3/2 O2S 1 (before TWC)
- Y58/1 Purge control valve

P07.61-0302-06

Electrical Test Program – Component Locations

Engine Compartment
Model 202

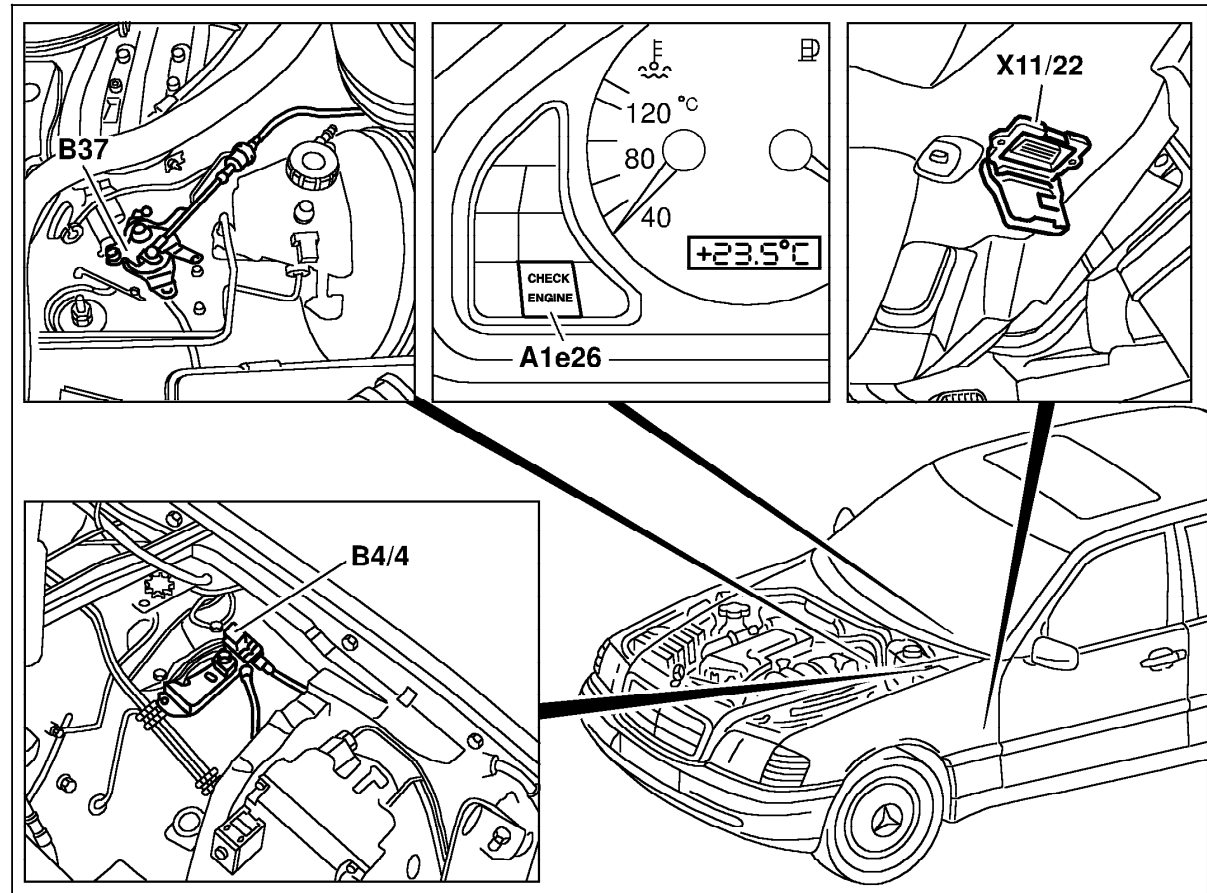


Figure 18

A1e26 "CHECK ENGINE" MIL (only USA)

B4/4 Fuel tank emissions monitoring pressure sensor (only USA)

B37 Pedal valve sensor

X11/22 Diagnostic module (OBD II) generic scan tool connector (only USA)

P07.61-0303-06

Electrical Test Program – Component Locations

Components on engine
Model 210

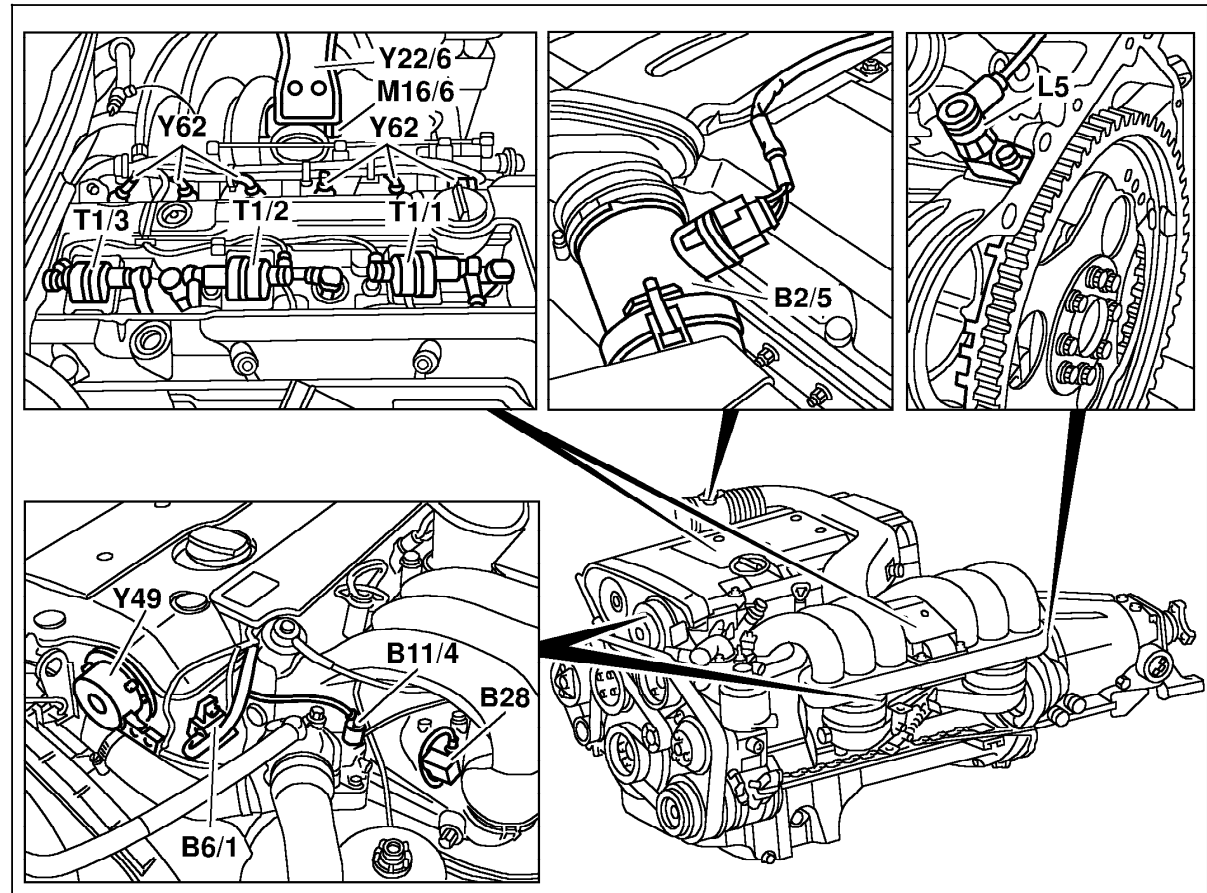


Figure 19

- B2/5 Hot film MAF sensor
- B6/1 Camshaft Hall-effect sensor
- B11/4 ECT sensor
- B28 Pressure sensor (only USA)
- L5 CKP sensor
- M16/1 EA/CC/ISC actuator
- T1/1 Ignition coil cylinders 2 and 5
- T1/2 Ignition coil cylinders 3 and 4
- T1/3 Ignition coil cylinders 1 and 6
- Y22/6 Resonance intake manifold switchover valve
- Y49 Adjustable camshaft timing solenoid
- Y62 Injectors

P07.61-0281-06

Electrical Test Program – Component Locations

Components on engine
Model 210

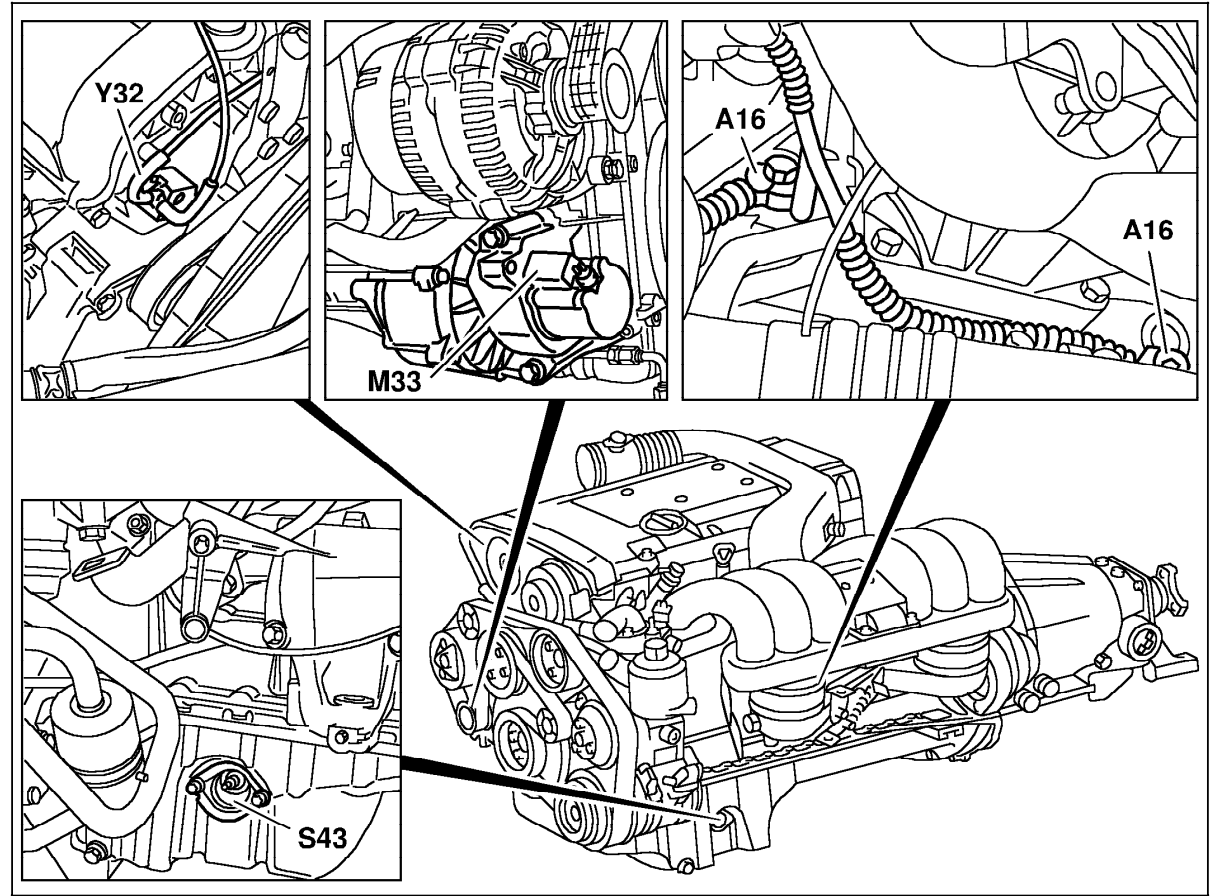


Figure 20

- A16 Knock sensors
- M33 AIR pump (only USA J TAW ROK)
- S43 Oil level switch
- Y32 AIR pump switchover valve (only USA J TAW ROK)

P07.61-0280-06

Electrical Test Program – Component Locations

Engine Compartment
Model 210 (USA only)

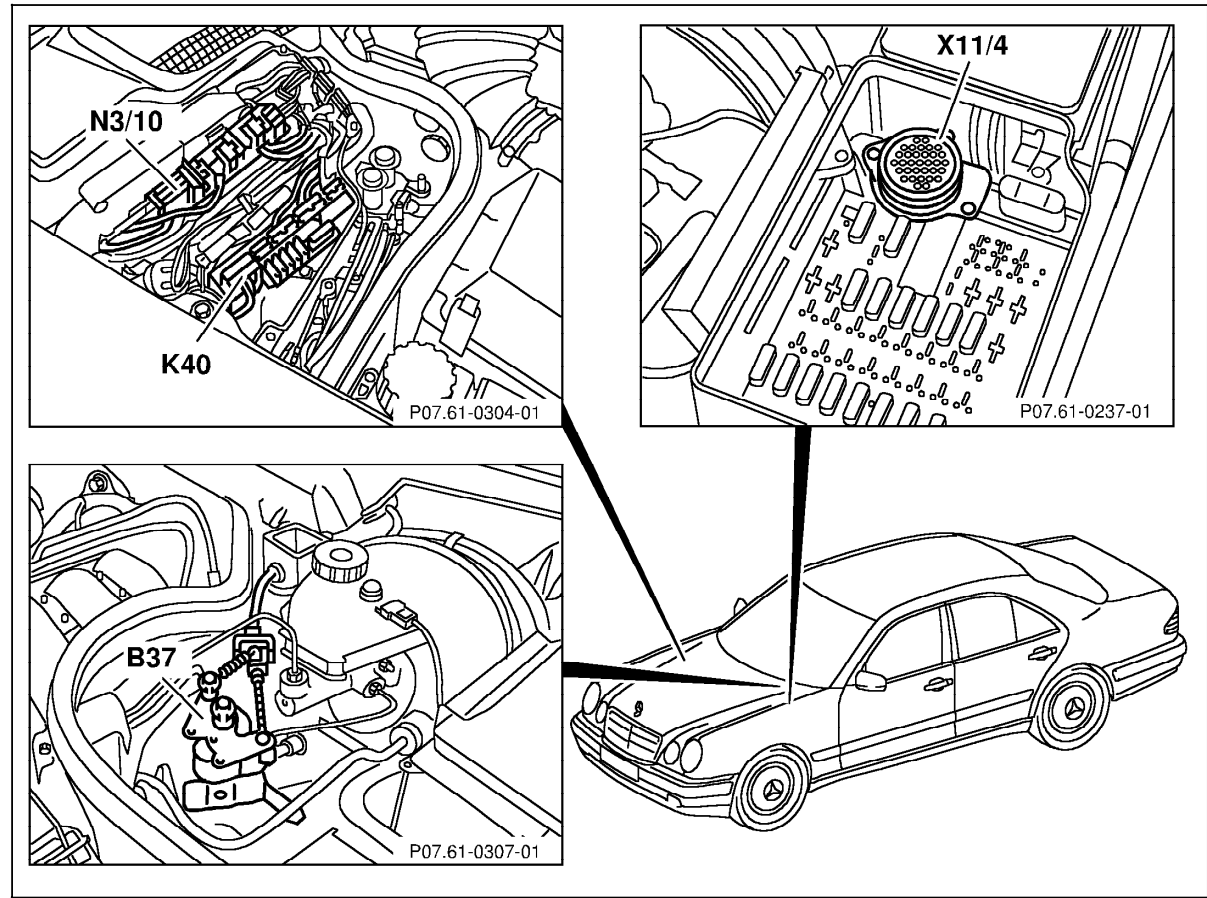


Figure 21

- B37 Pedal value sensor
- K40 Relay module with:
FP relay
AIR pump relay
- N3/10 Engine control module (ME-SFI)
- X11/4 Data link connector (DTC readout)

Electrical Test Program – Component Locations

Engine Compartment
Model 210 (USA only)

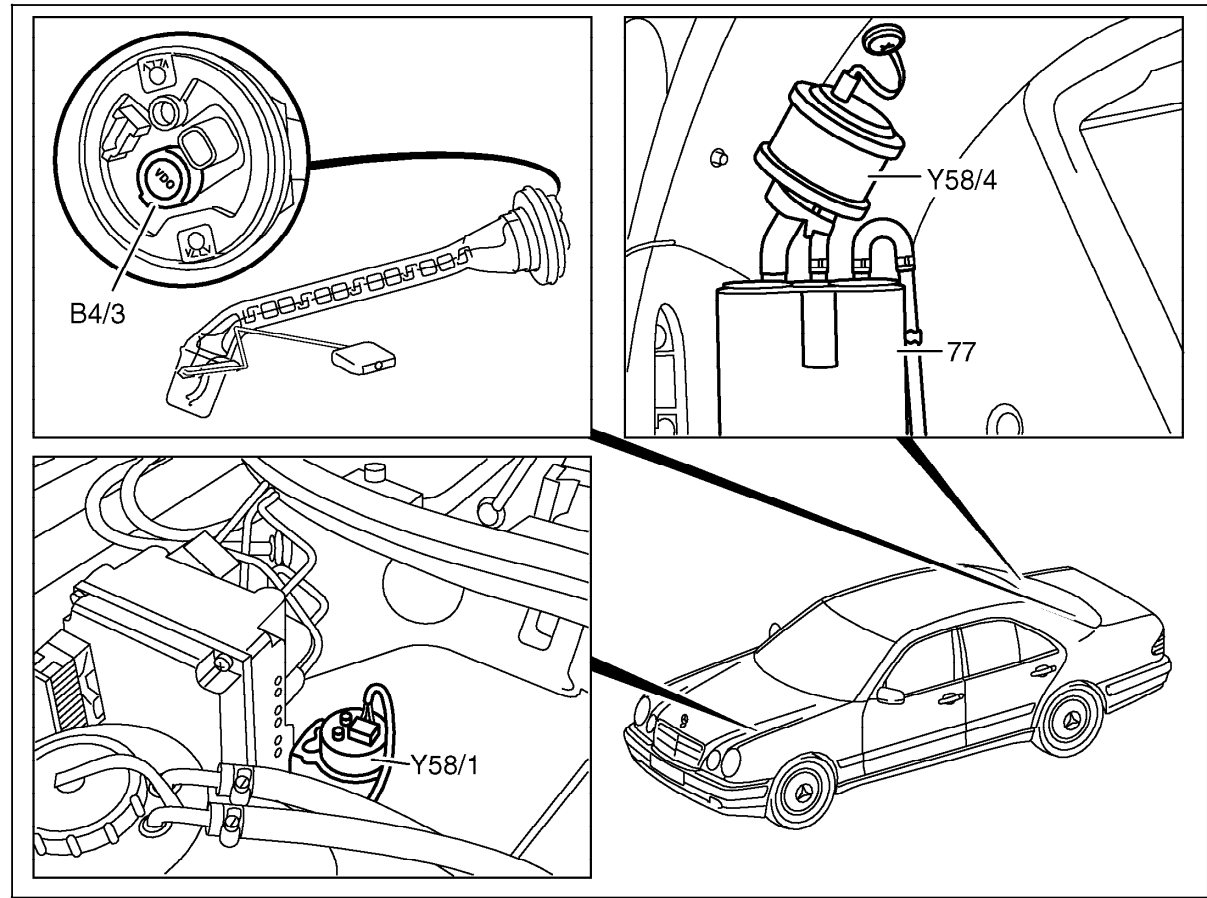


Figure 22

- B4/3 Fuel tank pressure sensor (only USA)
- Y58/1 Purge control valve
- Y58/4 Activated charcoal canister shut-off valve (only USA)
- 77 Activated charcoal canister

P07.61-0288-06

Electrical Test Program – Component Locations

Engine Compartment
Model 210 (USA only)

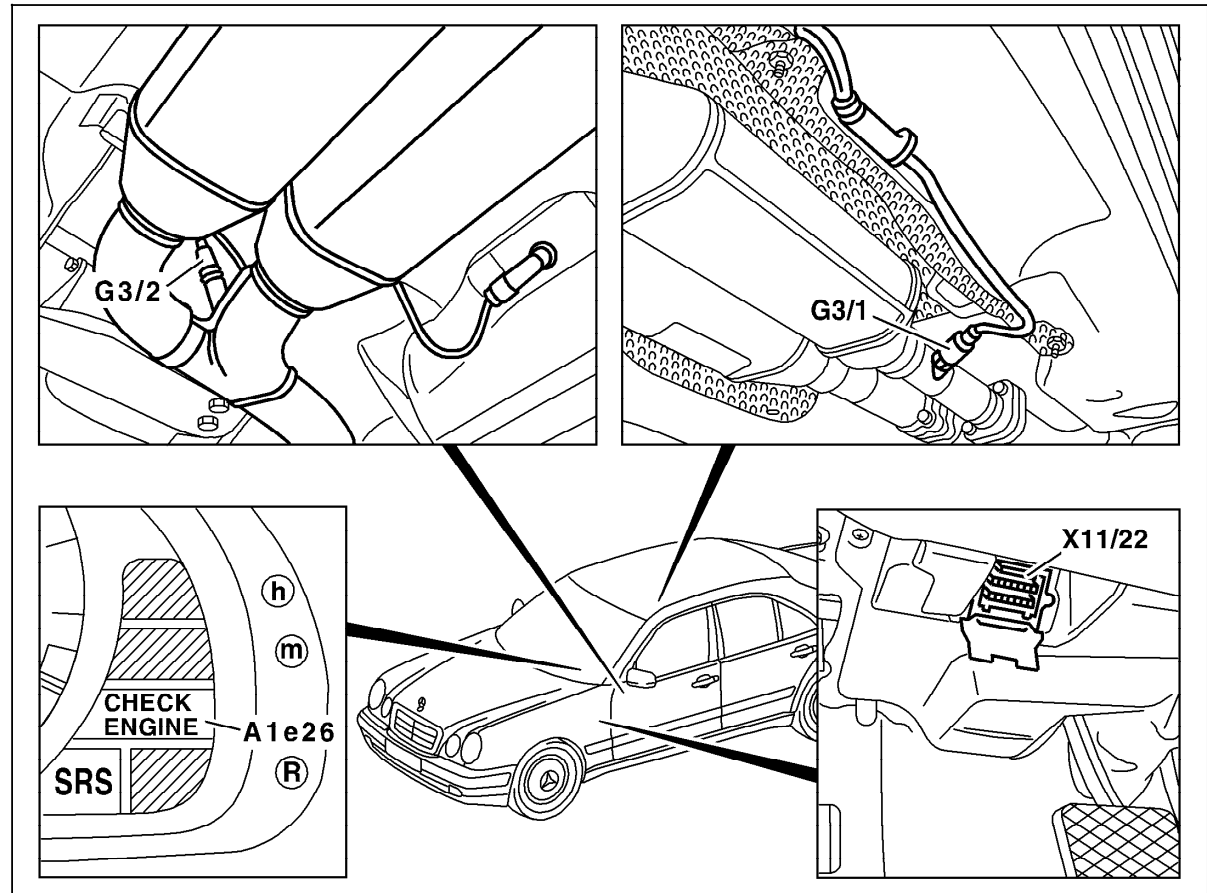


Figure 23

- A1e26 "CHECK ENGINE" MIL (only USA)
- G3/1 O2S 2 (after TWC) (only USA)
- G3/2 O2S 1 (before TWC)
- X11/22 Diagnostic module (OBD II) generic scan tool connector (only USA)

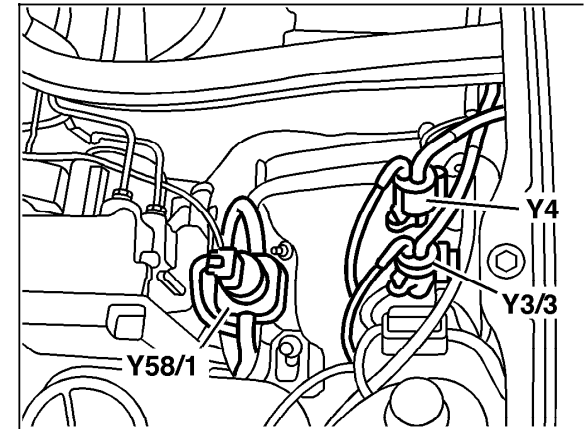
P07.61-0289-06

Electrical Test Program – Component Locations

Engine compartment
Model 210

Figure 24

- Y3/3 Upshift delay switchover valve
- Y4 Transmission mode switchover valve
- Y58/1 Purge control valve



P07.51-0336-01