

Electrical Test Program – Component Locations

Components on engine  
Model 170

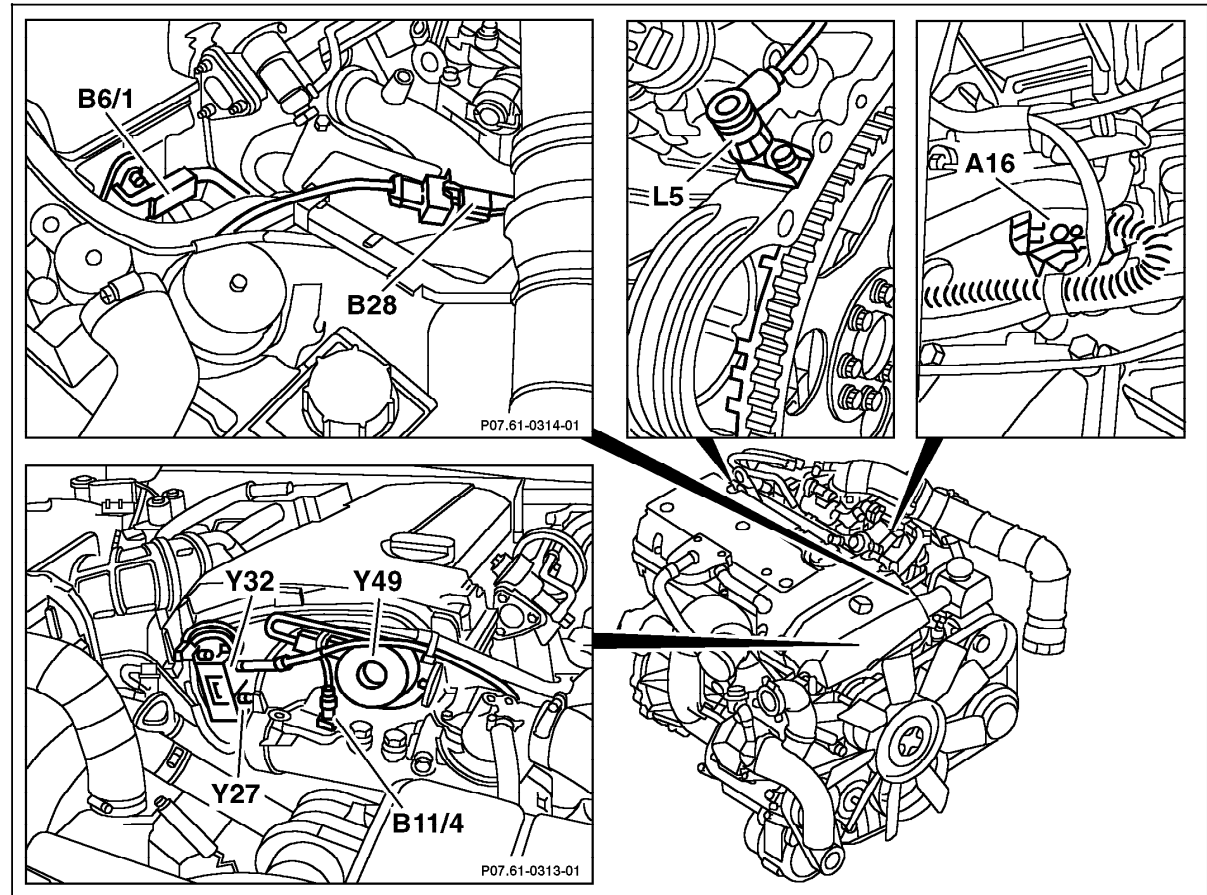


Figure 1

- A16 Knock sensor
- B6/1 Camshaft Hall-effect sensor
- B11/4 ECT sensor
- B28 Pressure sensor (only USA)
- L5 CKP sensor
- Y27 EGR switchover valve (Model 202 only) (only USA)
- Y32 AIR pump switchover valve (Model 170/202 only) (only USA)
- Y49 Adjustable camshaft timing solenoid

P07.61-0335-06

Electrical Test Program – Component Locations

Components on engine  
Model 170

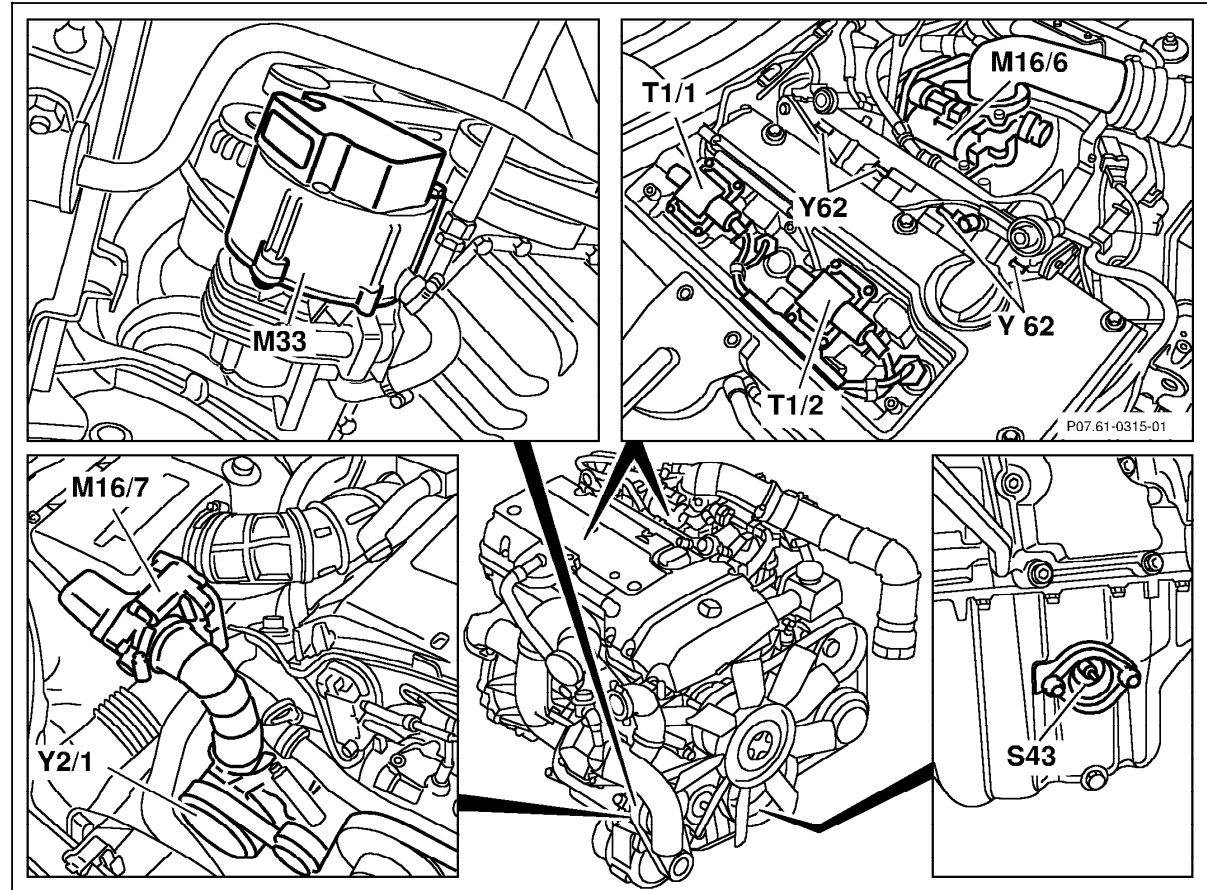


Figure 2

- M16/6 ISC actuator
- M16/7 Air flap/air filter actuator (for supercharger only)
- M33 AIR pump (model 202 [only USA], without supercharger)
- S43 Oil level switch
- T1/1 Ignition coil, cylinder 1 and 4
- T1/2 Ignition coil, cylinder 2 and 3
- Y2/1 Magnetic super charger clutch (for supercharger only)
- Y62 Injectors

P07.61-0336-06

Electrical Test Program – Component Locations

Engine Compartment  
Model 170

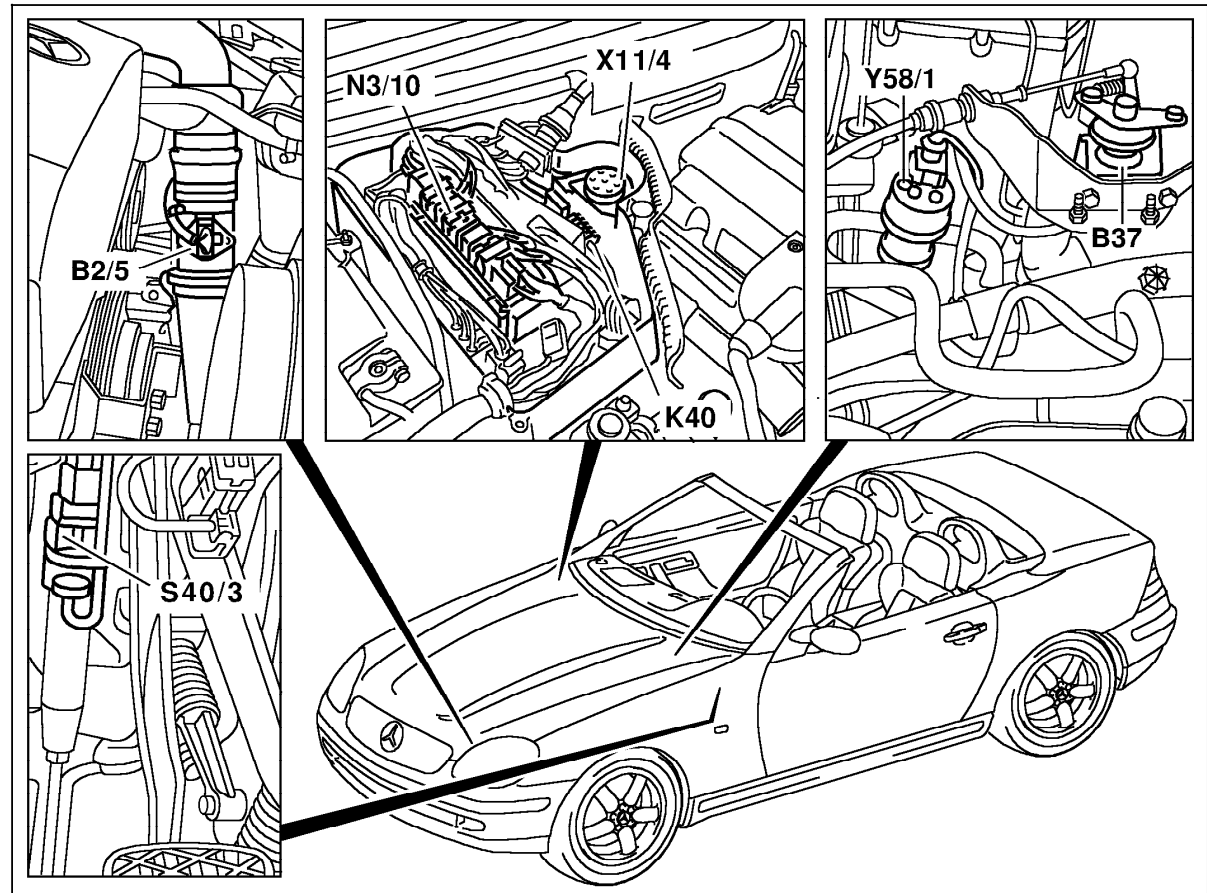


Figure 3

- B2/5 Hot film MAF sensor
- B37 Pedal valve sensor
- K40 Relay module with:  
FP relay  
AIR pump relay (only USA)
- N3/10 Engine control module (ME-SFI)
- S40/3 Clutch pedal switch (not USA)
- X11/4 Data link connector (DTC readout) (38-pole)
- Y58/1 Purge control valve

P07.61-0337-06

Electrical Test Program – Component Locations

Engine Compartment  
Model 170

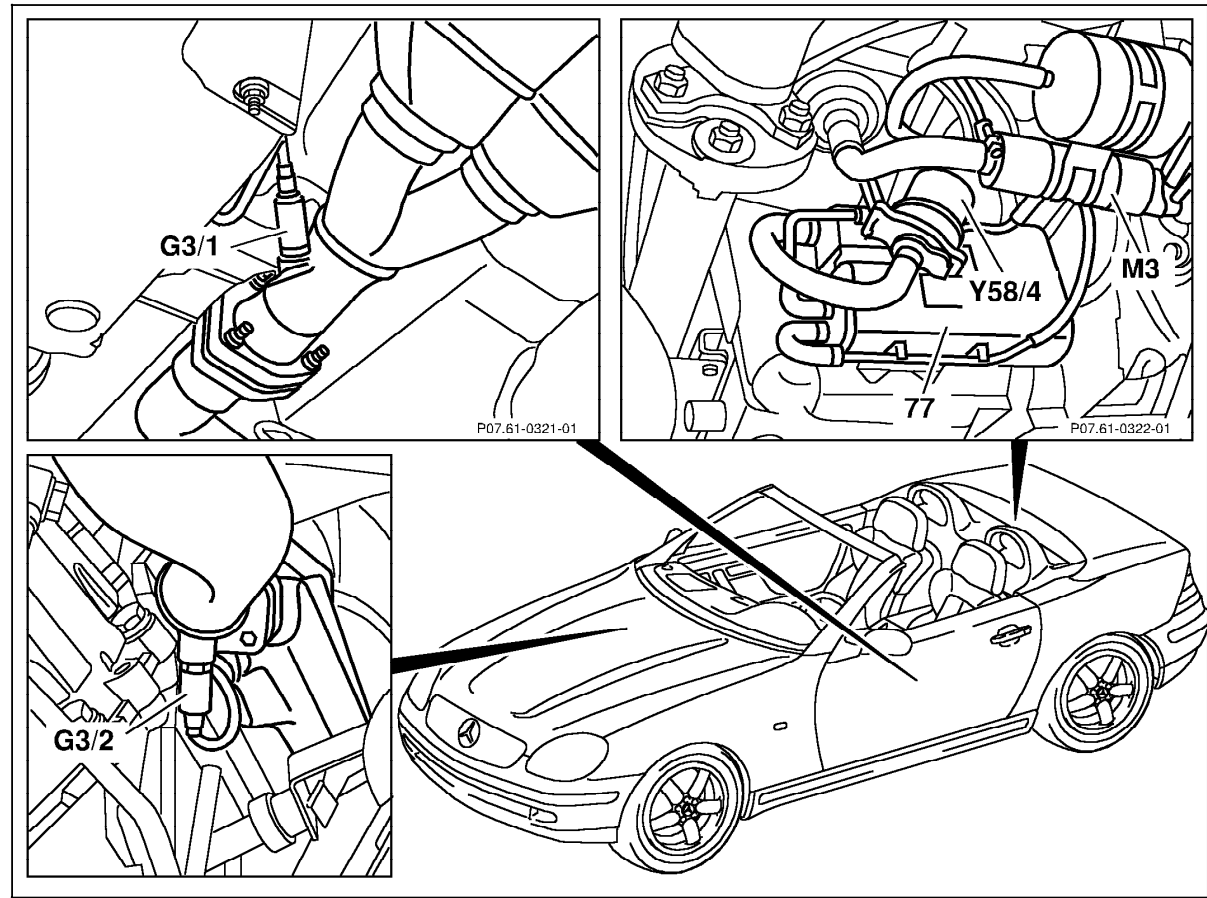


Figure 4

- G3/1 O2S 2 (after TWC) (only USA)
- G3/2 O2S 1 (before TWC)
- M3 Fuel pump
- Y58/4 Activated charcoal canister shut-off valve (only USA)
- 77 Activated charcoal canister (only USA)

P07.61-0338-06

Electrical Test Program – Component Locations

Model 170

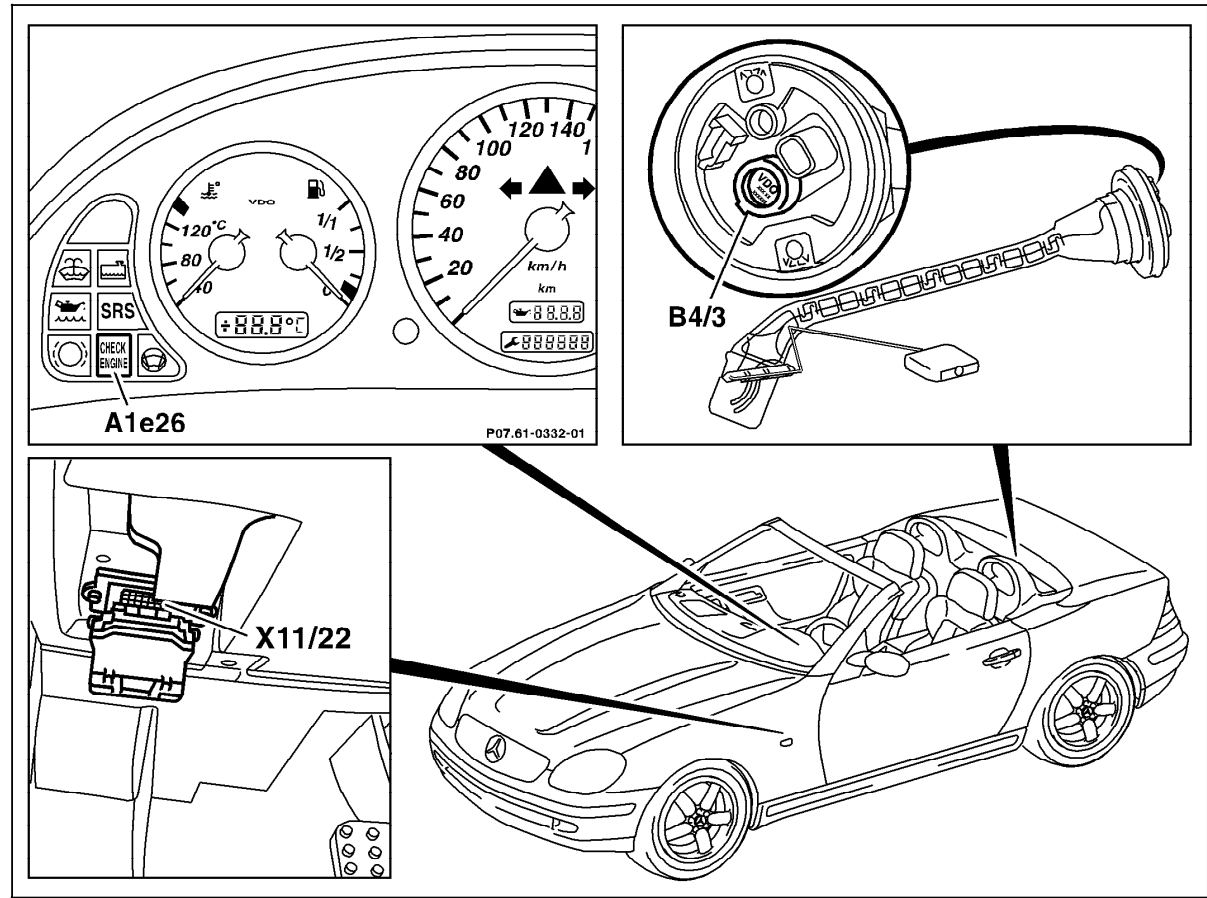


Figure 5

- A1e26 "CHECK ENGINE" MIL (only USA)
- B4/3 Fuel tank pressure sensor (only USA)
- X11/22 Diagnostic module (OBD II) generic scan tool connector (only USA)

P07.61-0339-06

Electrical Test Program – Component Locations

Components on engine  
Model 202

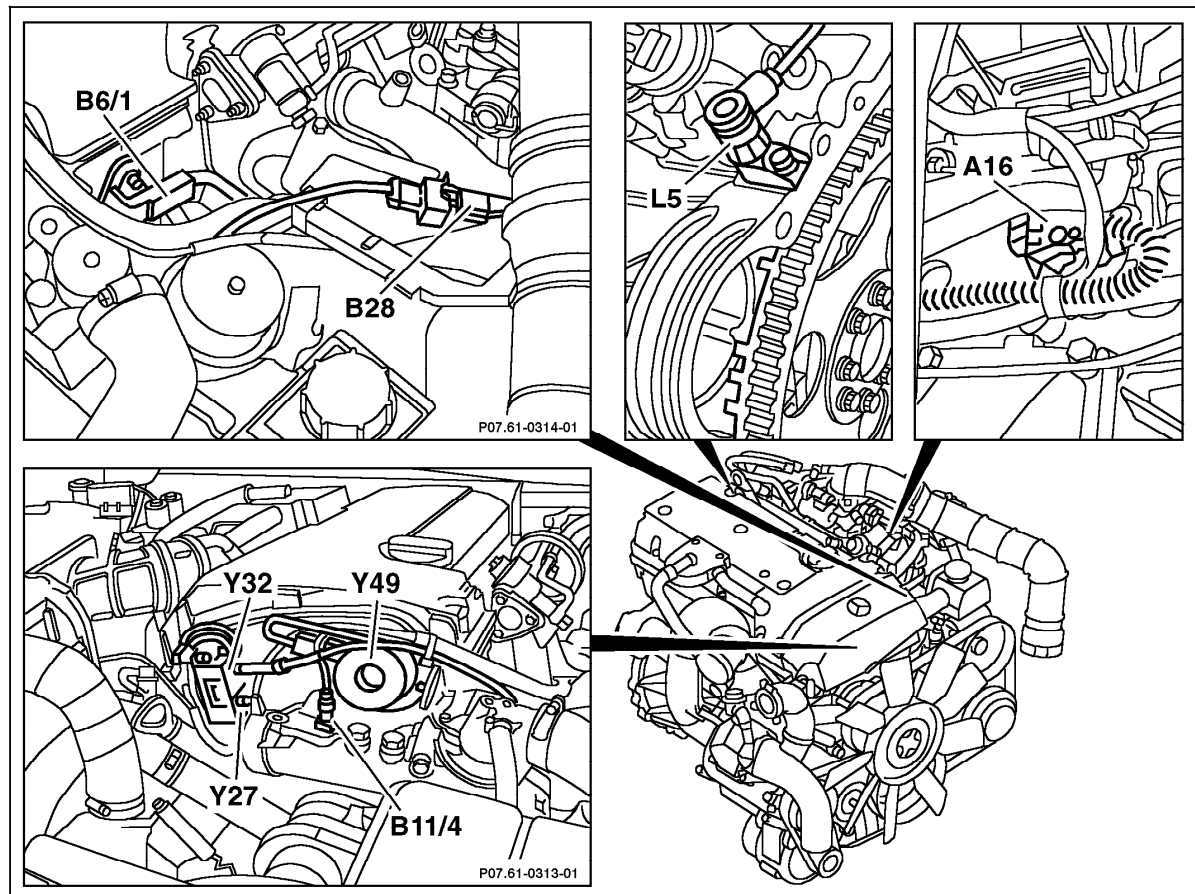


Figure 6

- A16 Knock sensor
- B6/1 Camshaft Hall-effect sensor
- B11/4 ECT sensor
- B28 Pressure sensor (only USA)
- L5 CKP sensor
- Y27 EGR switchover valve (Model 202 [only USA], without supercharger)
- Y32 AIR pump switchover valve (Model 170/202 only) (only USA)
- Y49 Adjustable camshaft timing solenoid

P07.61-0335-06

Electrical Test Program – Component Locations

Components on engine  
Model 202

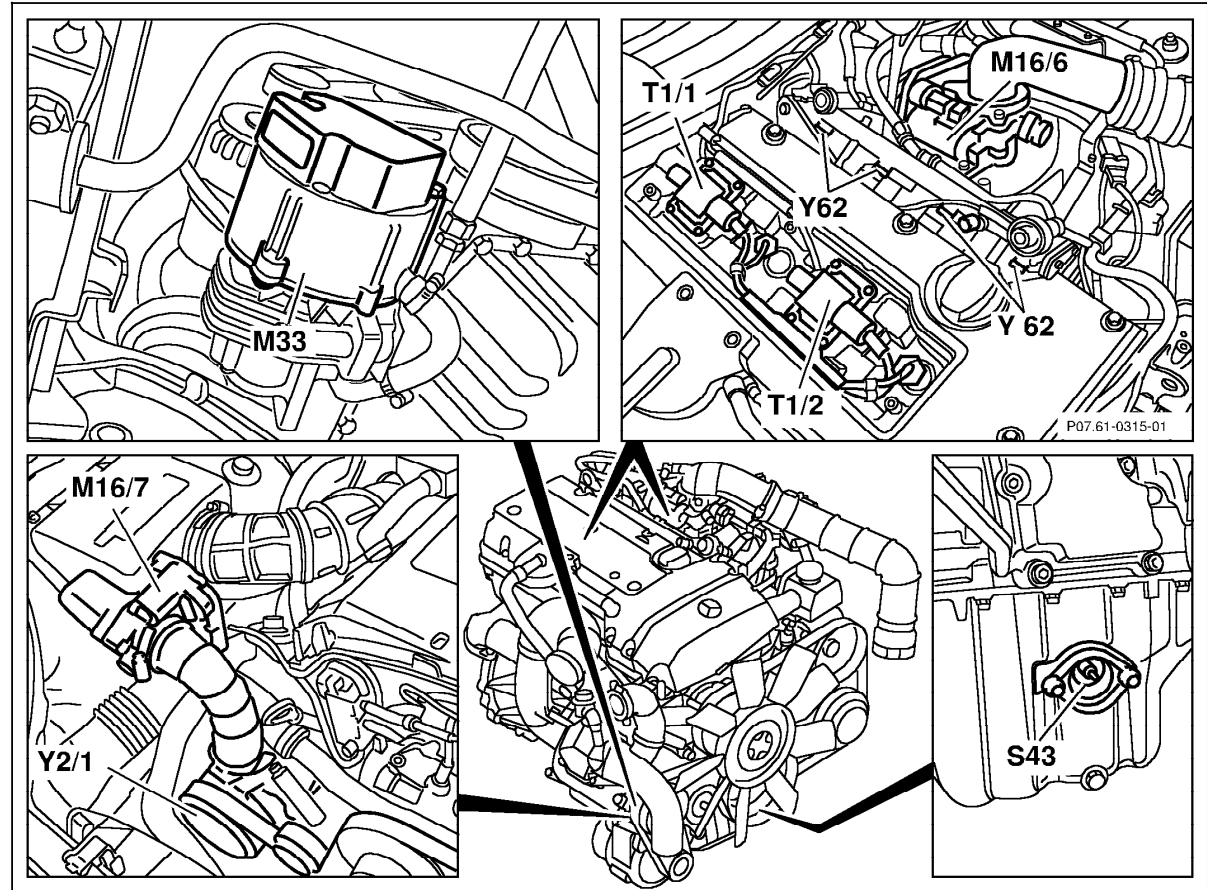


Figure 7

- M16/6 ISC actuator
- M16/7 Air flap/air filter actuator (for supercharger only)
- M33 AIR pump (Model 202 [only USA], without supercharger)
- S43 Oil level switch
- T1/1 Ignition coil, cylinder 1 and 4
- T1/2 Ignition coil, cylinder 2 and 3
- Y2/1 Magnetic supercharger clutch (for supercharger only)
- Y62 Injectors

P07.61-0336-06

Electrical Test Program – Component Locations

Engine Compartment  
Model 202

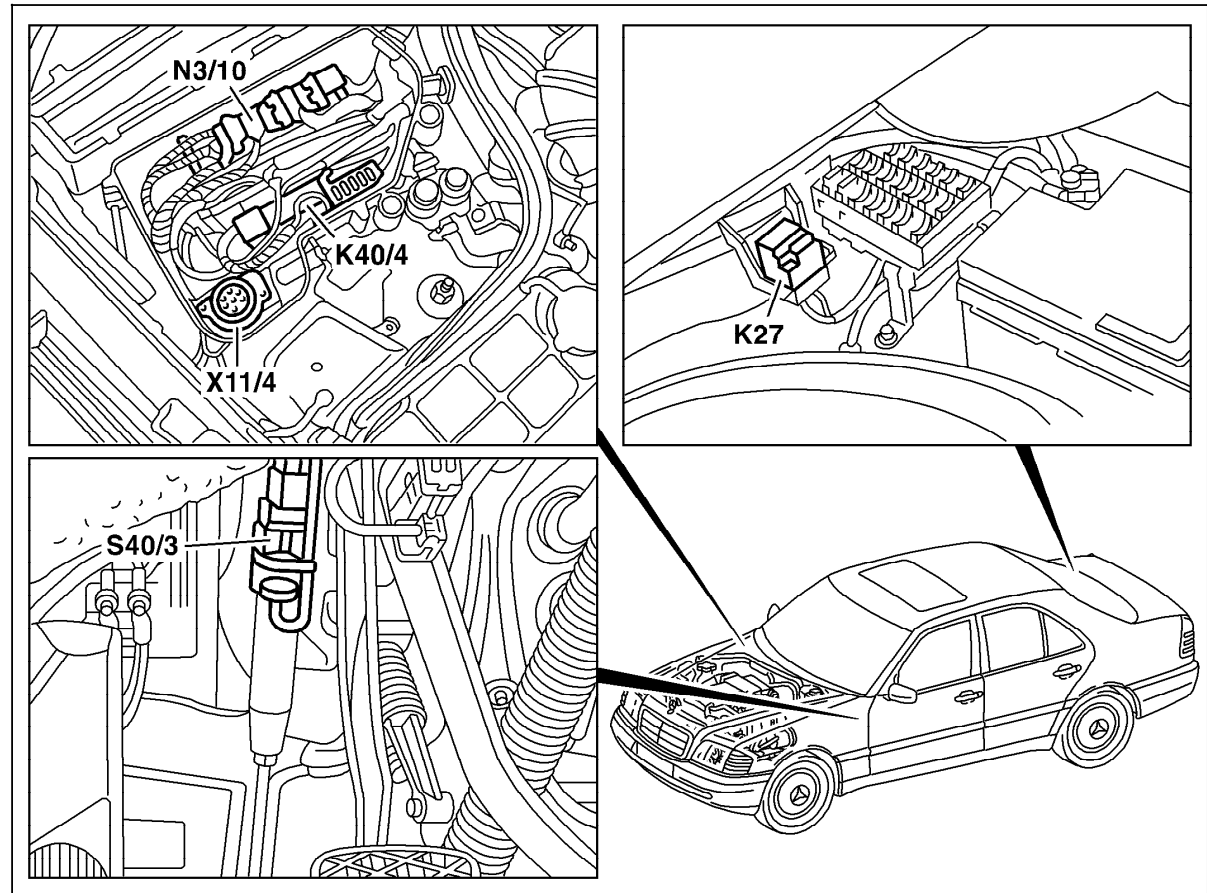


Figure 8

- K27 FP relay module
- K40/4 Passenger-side fuse and relay module box with:  
Starter relay  
Relay module, AIR pump  
(model 202 [only USA], without supercharger)
- N3/10 Engine control module (ME-SFI)
- S40/3 Clutch pedal switch (not USA)
- X11/4 Data link connector (DTC readout)

P07.61-2038-06



Electrical Test Program – Component Locations

Engine Compartment  
Model 202

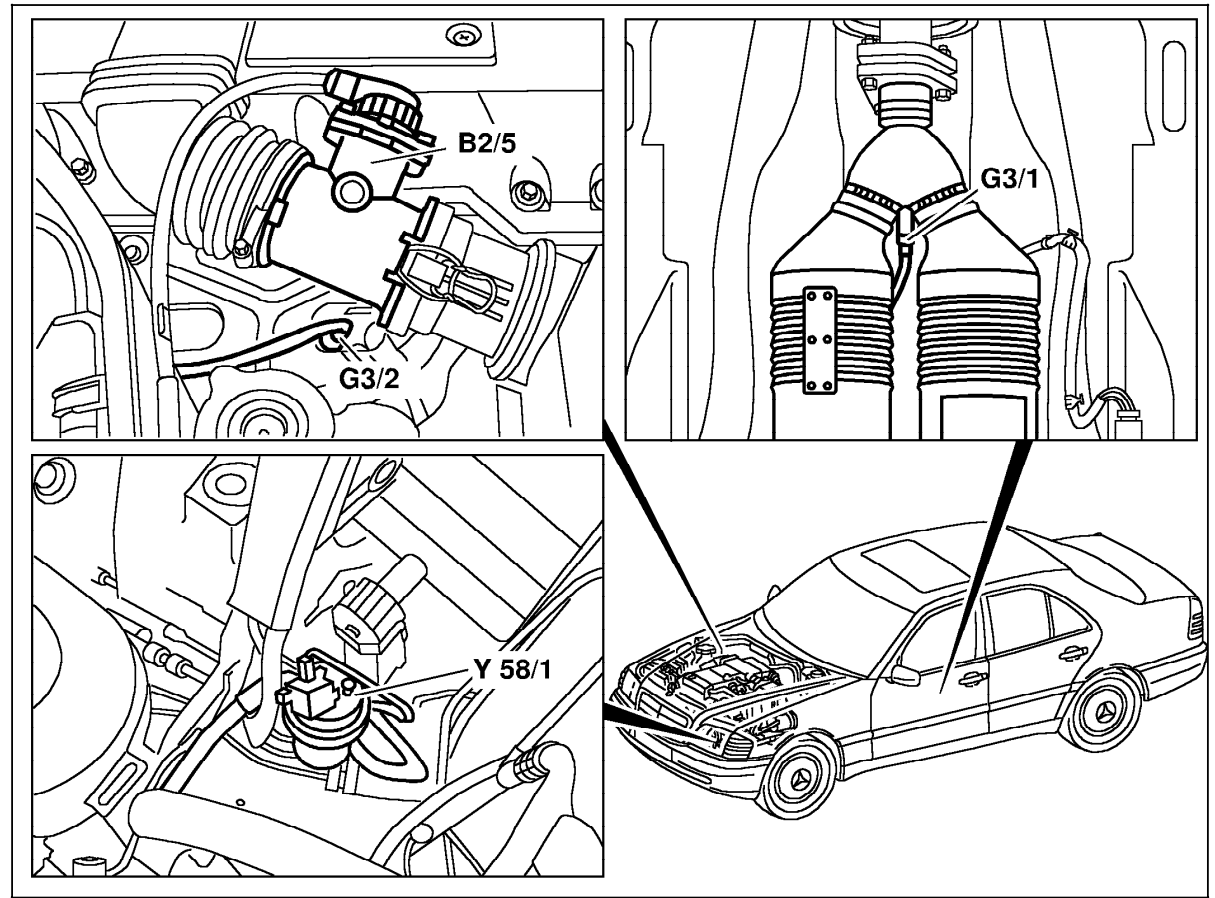


Figure 9

- B2/5 Hot film MAF sensor
- G3/1 O2S 2 (after TWC) (only USA)
- G3/2 O2S 1 (before TWC)
- Y58/1 Purge control valve

P07.61-0326-06

Electrical Test Program – Component Locations

Engine Compartment  
Model 202

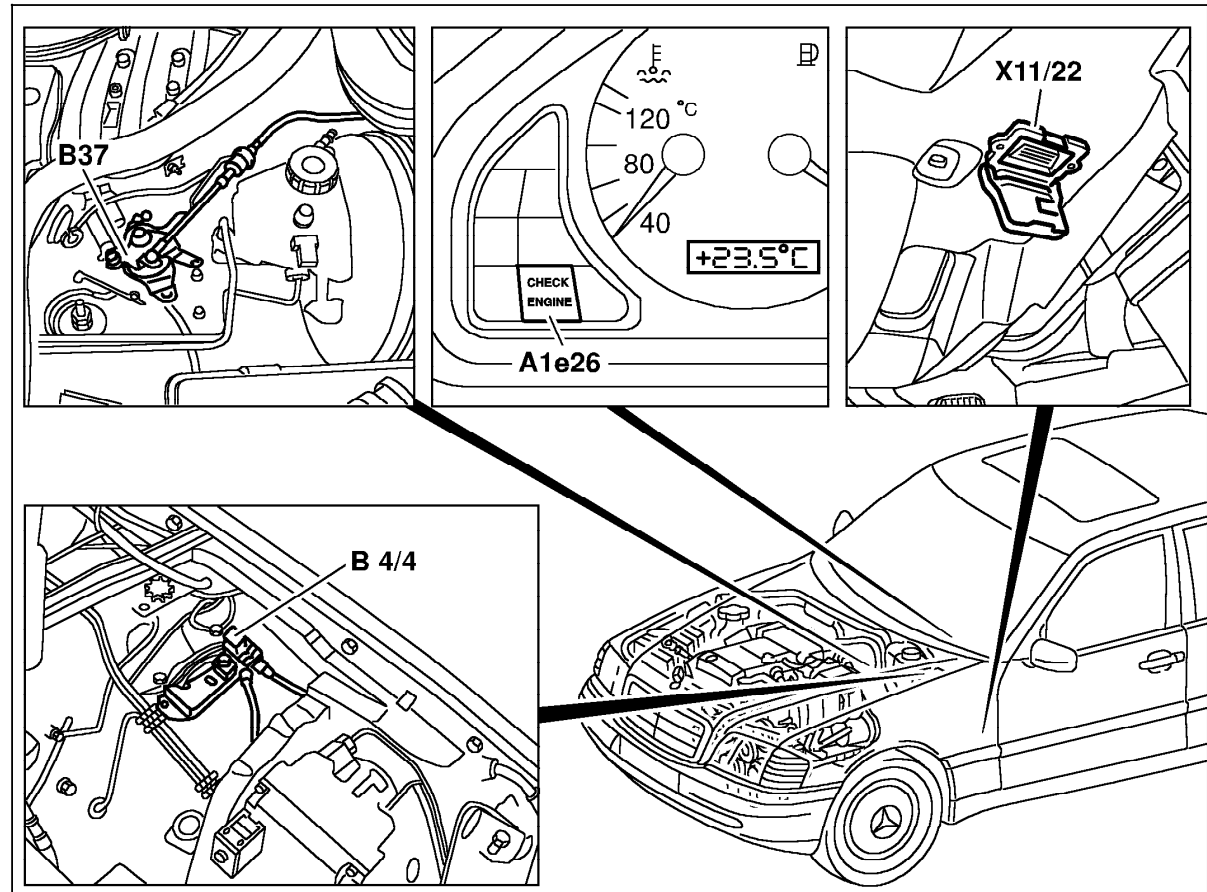


Figure 10

- A1e26 "CHECK ENGINE" MIL (only USA)
- B4/4 Fuel tank emissions monitoring pressure sensor (only USA, up to 08/97)
- B37 Pedal valve sensor
- X11/22 Diagnostic module (OBD II) generic scan tool connector (only USA)

P07.61-0328-06

Electrical Test Program – Component Locations

Purge control valve  
Model 202

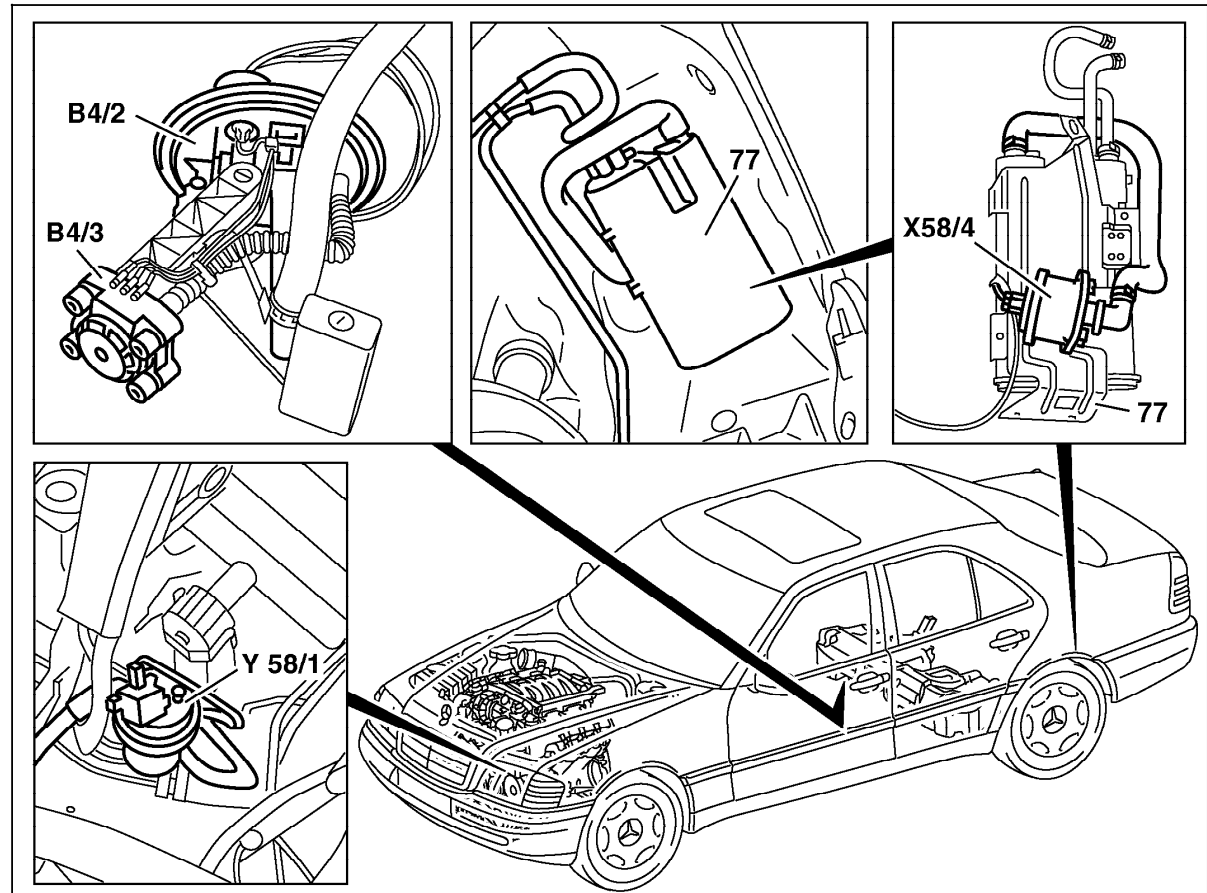


Figure 11

- B4/2 Right fuel level sensor
- B4/3 Fuel tank pressure sensor (USA as of 09/97)
- Y58/4 Activated charcoal canister shut-off valve (USA as of 09/97)
- Y58/1 Purge control valve
- 77 Activated charcoal canister

P07.61-0550-06