

Electrical Test Program – Component Locations

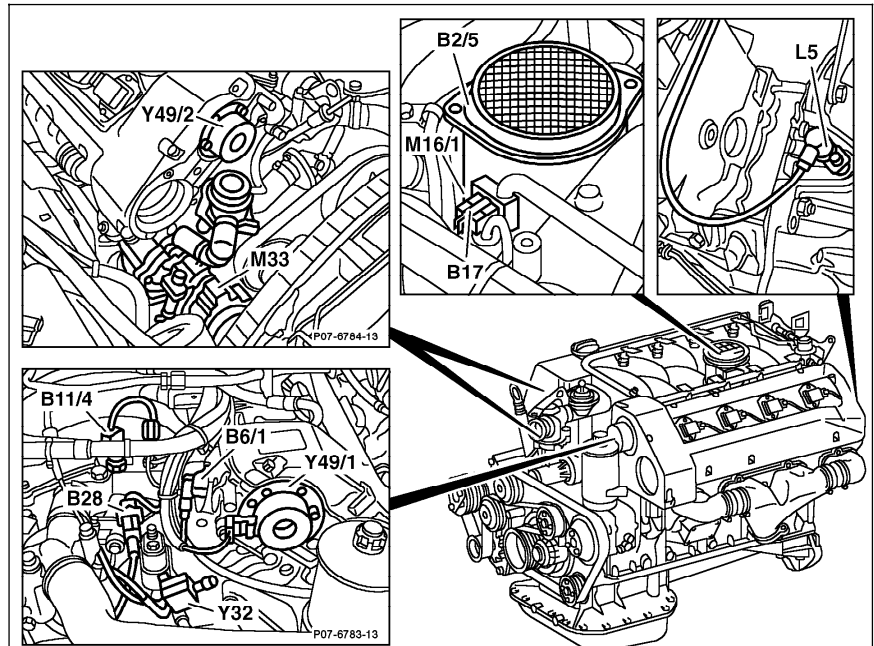


Figure 1

- B2/5 Hot film MAF sensor
- B6/1 Camshaft Hall-effect sensor
- B11/4 ECT sensor
- B17 IAT sensor
- B28 Pressure sensor (only USA)
- L5 CKP sensor
- M16/1 EA/CC/ISC actuator
- M33 AIR pump (only USA)
- Y32 AIR pump switchover valve (only USA)
- Y49/1 Left adjustable camshaft timing solenoid
- Y49/2 Right adjustable camshaft timing solenoid

P07.51-0359-57

Electrical Test Program – Component Locations

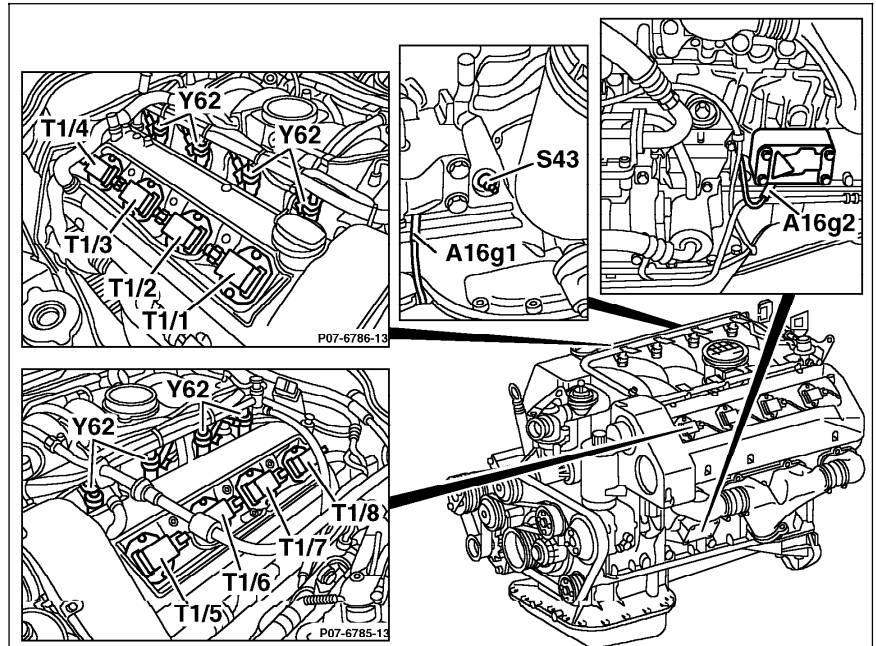


Figure 2

- A16g1 KS 1 (right side of engine)
- A16g2 KS 2 (left side of engine)
- T1/1 Ignition coil 1
- T1/2 Ignition coil 2
- T1/3 Ignition coil 3
- T1/4 Ignition coil 4
- T1/5 Ignition coil 5
- T1/6 Ignition coil 6
- T1/7 Ignition coil 7
- T1/8 Ignition coil 8
- S43 Oil level switch
- Y62 Injectors

P07.51-0358-57

Electrical Test Program – Component Locations

Engine Compartment  
Model 129

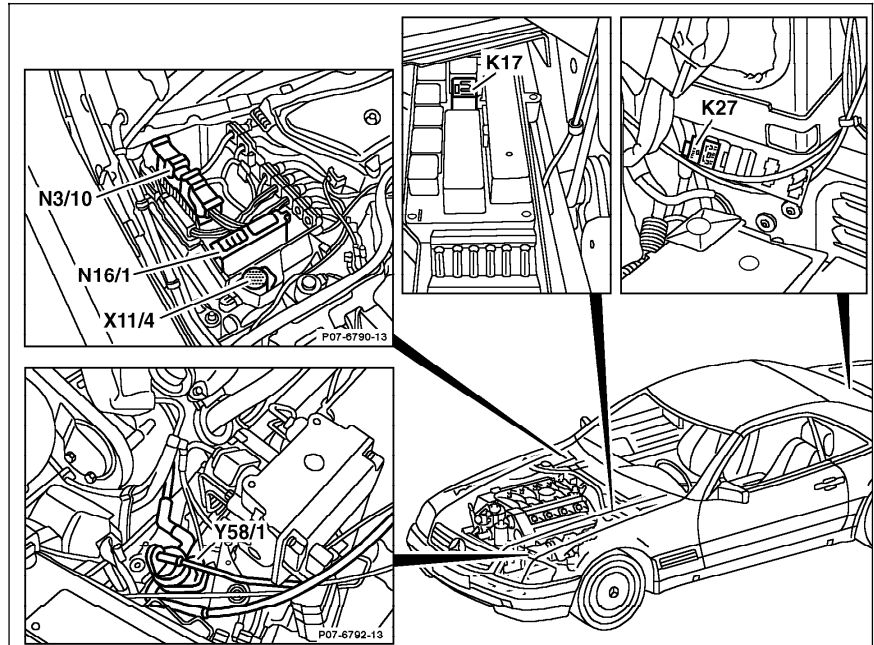


Figure 3

- K17 AIR relay module (only )
- K27 FP relay module
- N3/10 Engine control module (ME-SFI)
- N16/1 Base module (BM)
- X11/4 Data link connector (DTC readout) (38-pole)
- Y58/1 Purge control valve

P07.51-0360-57

Electrical Test Program – Component Locations

Engine Compartment  
Model 129

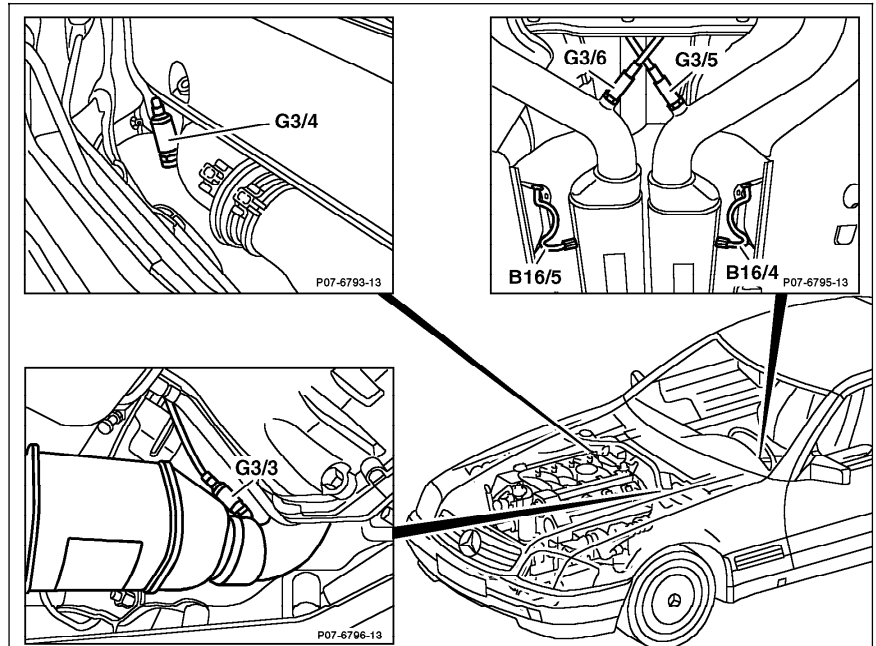


Figure 4

- G3/3 Left O2S 1 (before TWC)
- G3/4 Right O2S 1 (before TWC)
- G3/5 Left O2S 2 (after TWC) (USA)
- G3/6 Right O2S 2 (after TWC) (only USA)

P07.51-0361-57

Electrical Test Program – Component Locations

Engine Compartment  
Model 129

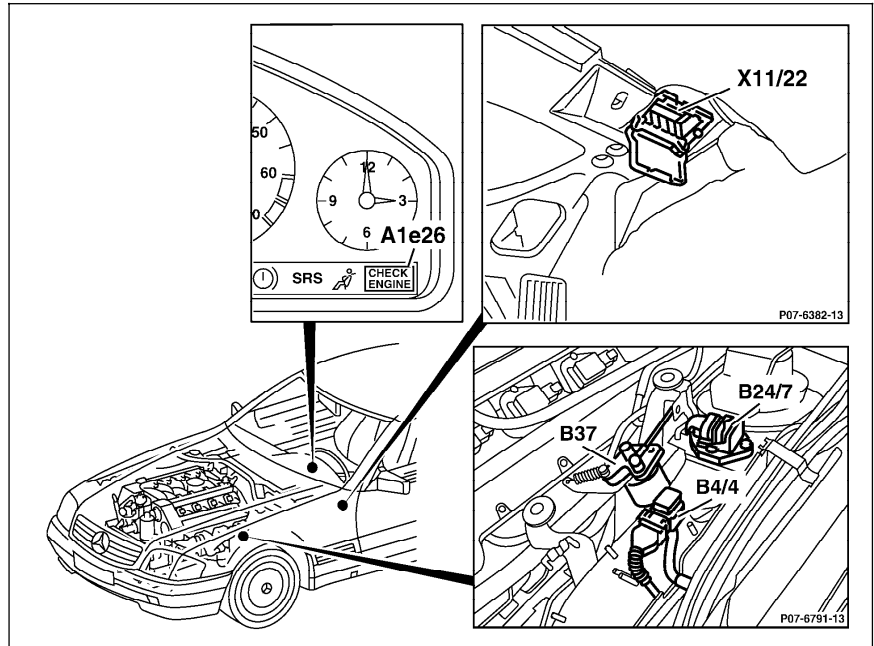


Figure 5

- A1e26 "CHECK ENGINE" MIL (only USA)
- B4/4 Purge monitoring pressure sensor (only USA, up to 08/97)
- B24 Body acceleration sensor (up to 05/96)
- B37 Pedal value sensor
- X11/22 Diagnostic module (OBD II) generic scan tool connector (only USA)

U07.51-0362-57

Electrical Test Program – Component Locations

Trunk Compartment  
Model 129

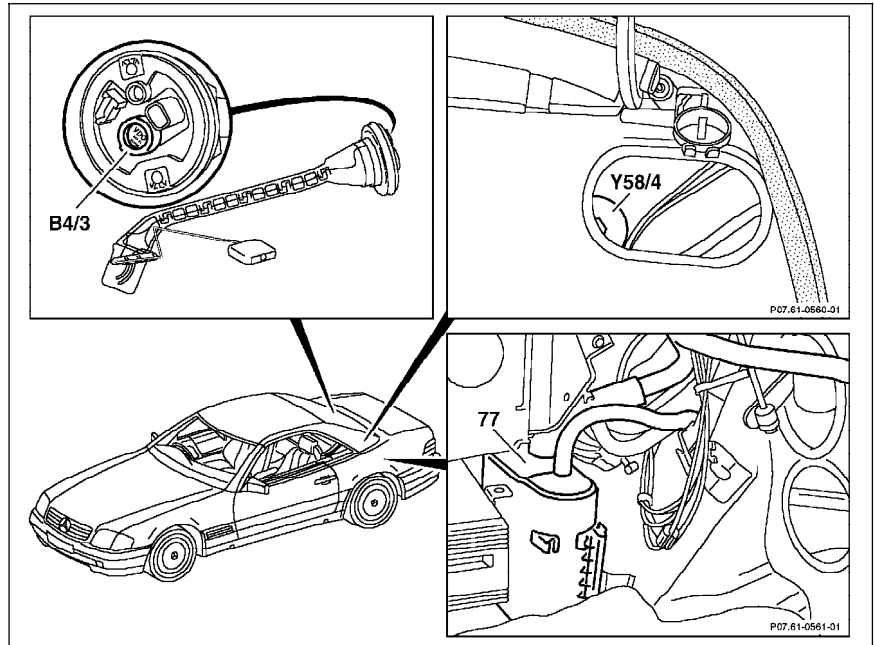


Figure 6

- B4/3 Fuel tank pressure sensor (only USA, as of 09/97)
- Y58/4 Activated charcoal canister shut-off valve (only USA, as of 09/97)
- 77 Activated charcoal canister

P07.61-0552-06

Electrical Test Program – Component Locations

Engine Compartment  
Model 140

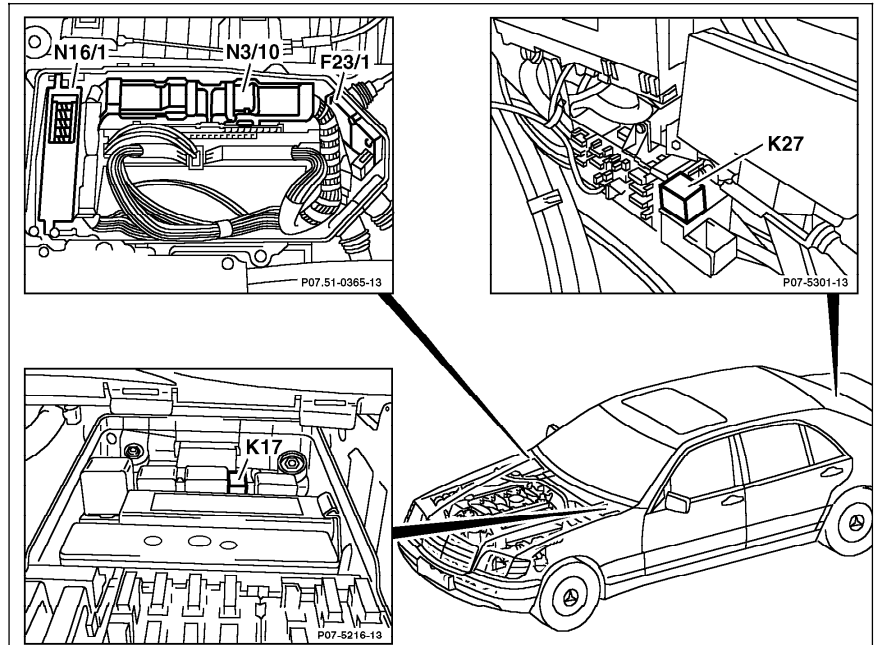


Figure 7

- F23/1 Control module box
- K17 AIR relay module (only <sup>USA</sup>, as of 12/96)
- K27 FP relay module
- N3/10 Engine control module (ME-SFI)
- N16/1 Base module (BM)

P07.51-0363-57

Electrical Test Program – Component Locations

Engine Compartment  
Model 140

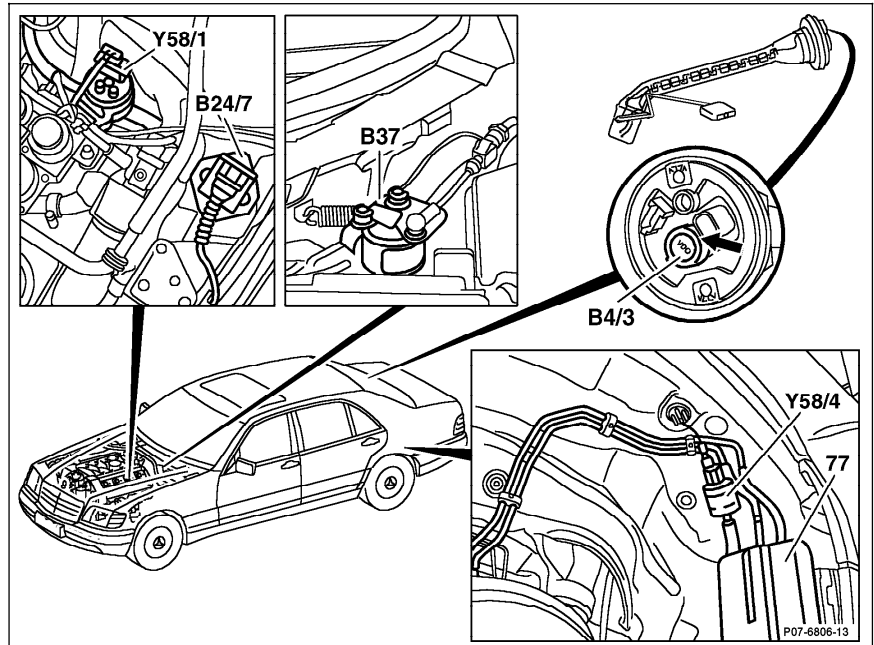


Figure 8

- B4/3 Fuel tank pressure sensor (only USA)
- B24 Body acceleration sensor (up to 05/96)
- B37 Pedal value sensor
- Y58/1 Purge control valve
- Y58/4 Activated charcoal canister shut-off valve (only USA)
- 77 Active charcoal canister

P07.61-0255-57



Electrical Test Program – Component Locations

Engine Compartment  
Model 140

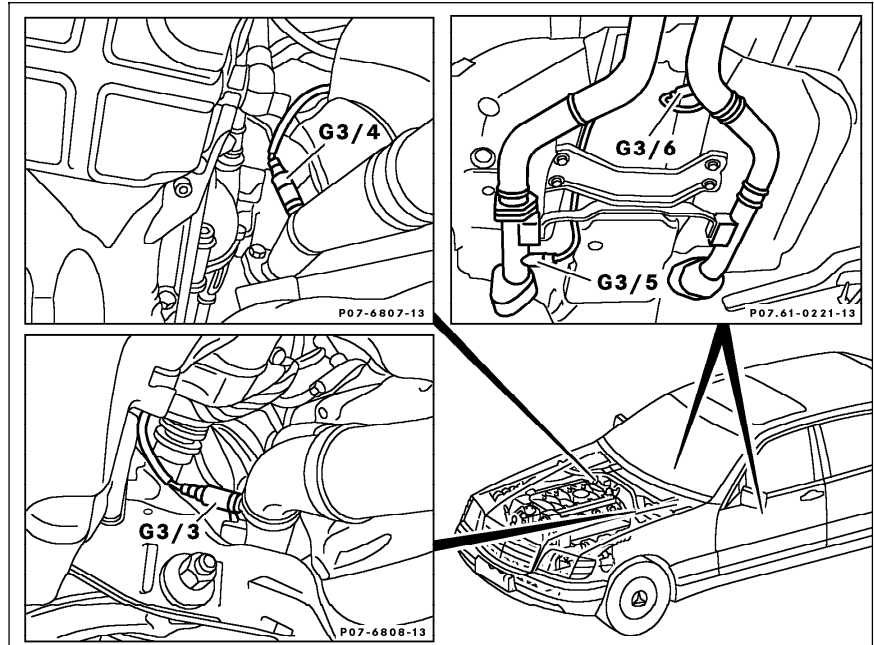


Figure 9

- G3/3 Left O2S 1 (before TWC)
- G3/4 Right O2S 1 (before TWC)
- G3/5 Left O2S 2 (after TWC) (only USA)
- G3/6 Right O2S 2 (after TWC) (only USA)

P07.61-0222-57

Electrical Test Program – Component Locations

Engine Compartment  
Model 140

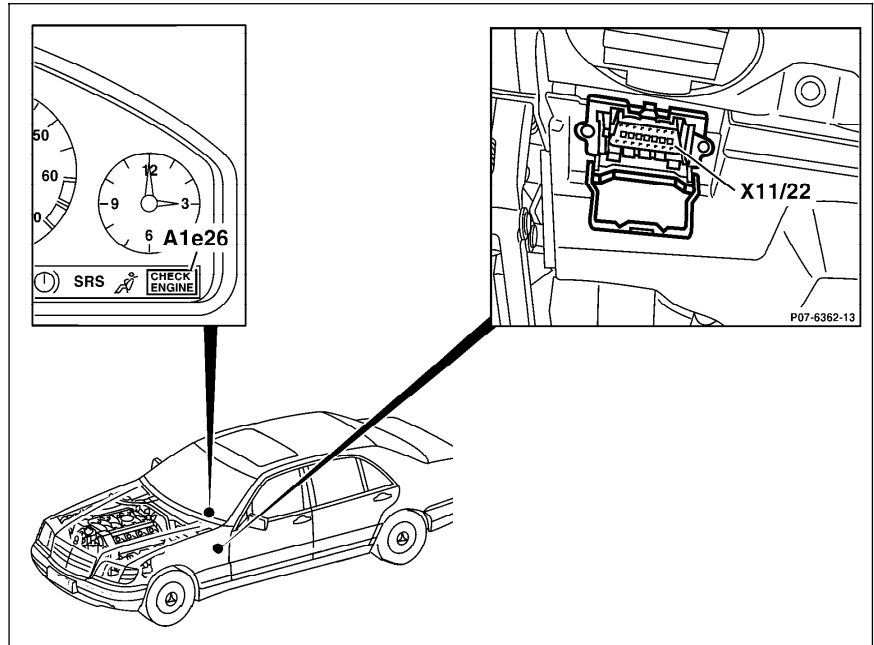


Figure 10

A1e26 "CHECK ENGINE" MIL (only USA)

X11/22 Diagnostic module (OBD II) generic scan tool connector (only USA)

U07.61-0229-57

Electrical Test Program – Component Locations

Engine Compartment  
Model 210

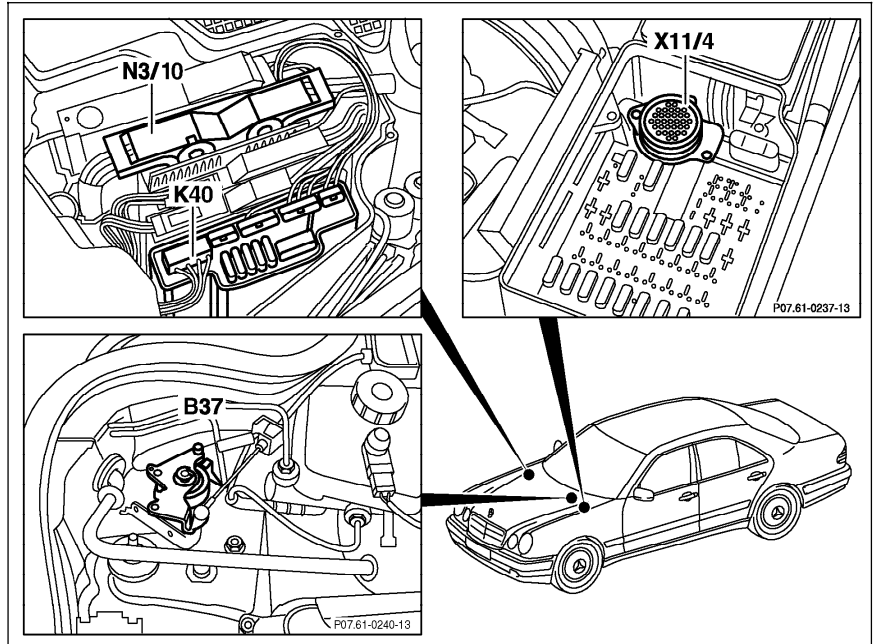


Figure 11

- B37 Pedal value sensor
- K40 Relay module with:  
AIR relay module  
FP relay module
- N3/10 Engine control module (ME-SFI)
- X11/4 Data link connector (DTC readout)

P07.61-0246-57

Electrical Test Program – Component Locations

Engine Compartment  
Model 210

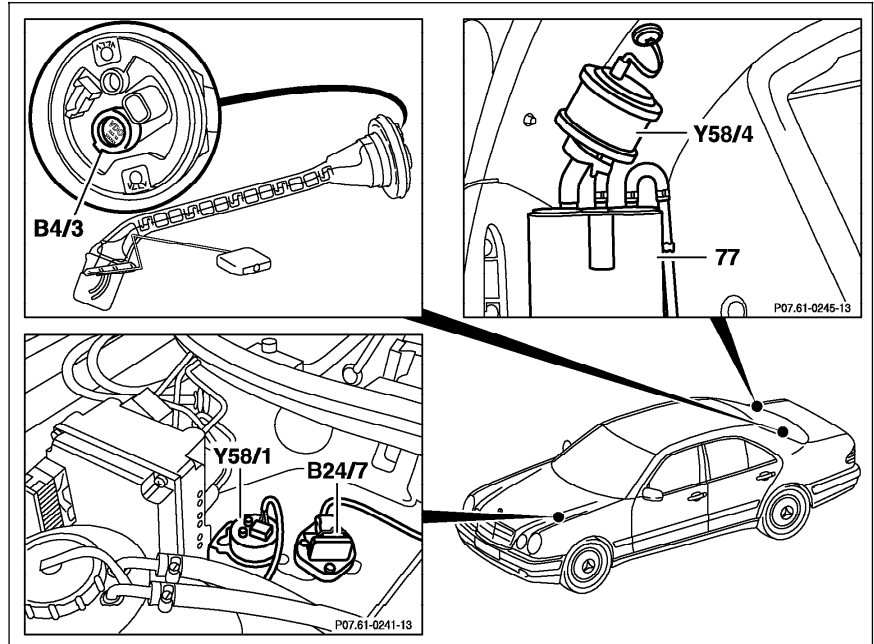


Figure 12

- B4/3 Fuel tank pressure sensor (only USA)
- B24 Body acceleration sensor (up to 05/96)
- Y58/1 Purge control valve
- Y58/4 Activated charcoal canister shut-off valve (only USA)
- 77 Activated charcoal canister

P07.61-0247-57

Electrical Test Program – Component Locations

Engine Compartment  
Model 210

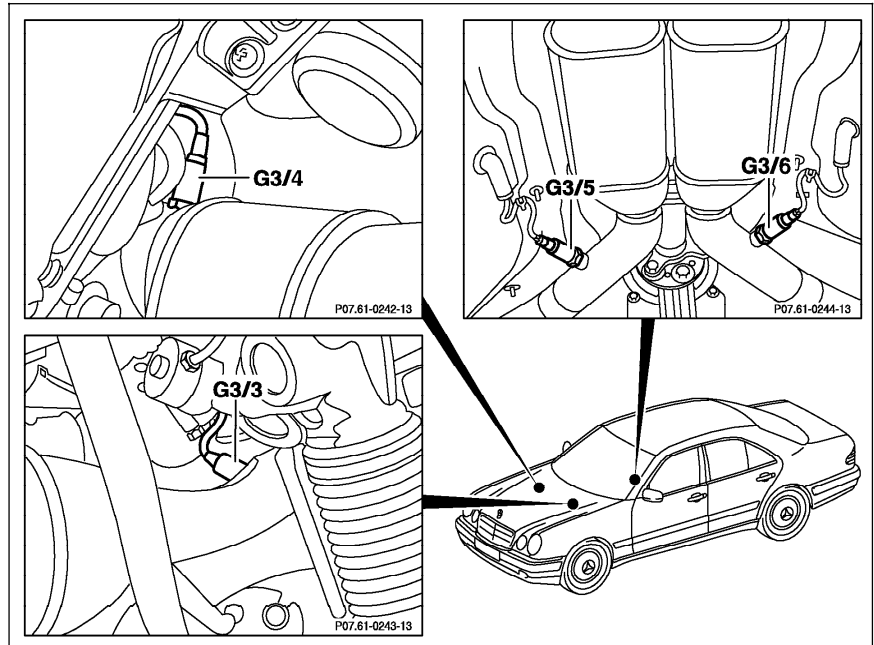


Figure 13

- G3/3 Left O2S 1 (before TWC)
- G3/4 Right O2S 1 (before TWC)
- G3/5 Left O2S 2 (after TWC) (only USA)
- G3/6 Right O2S 2 (after TWC) (only USA)

P07.61-0248-57

Electrical Test Program – Component Locations

Engine Compartment  
Model 210

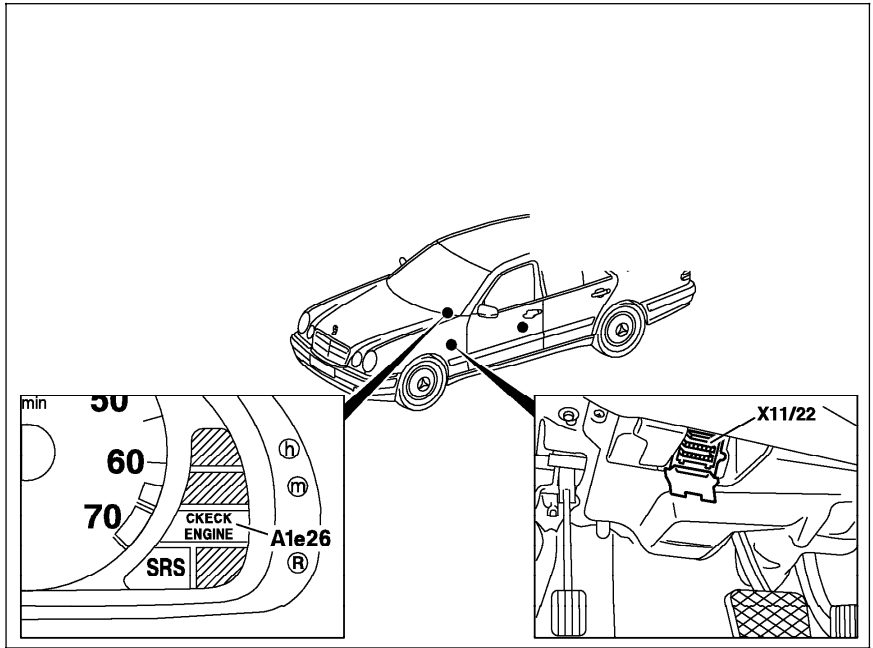


Figure 14

- A1e26 CHECK ENGINE MIL (only USA)
- X11/22 Diagnostic module (OBD II) generic scan tool connector

U07.61-0249-57