

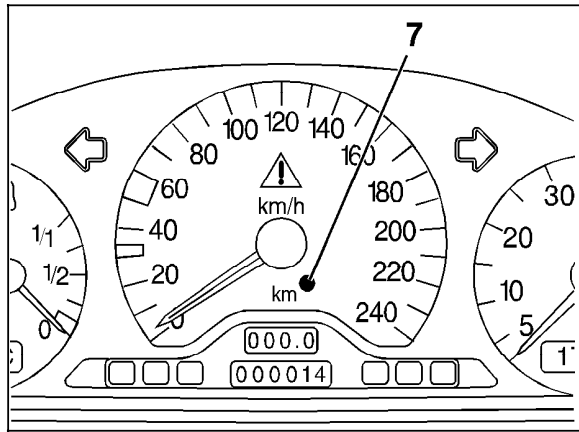
Electrical Test Program – Test

⇒	Test scope	Test connection	Test condition	Nominal value	Possible cause/Remedy
1.0	Instrument cluster (A1) Voltage supply Circuit 30		Ignition: OFF Remove instrument cluster (A1) Disconnect connector 1 (30-pole)	11 – 14 V	Fuse 4 in fuse and relay box (F1), Wiring, ⇒ 1.1
1.1	Voltage supply Circuit 15		Ignition: ON	11 – 14 V	Fuse 7 in fuse and relay box (F1), Wiring, A1
2.0	HHT interface Connection between A1 and data link connector (X11/4)		Ignition: OFF Remove A1, Disconnect connector 1 (30-pole)	5 Ω	Wiring.

Electrical Test Program – Test

⇒	Test scope	Test connection	Test condition	Nominal value	Possible cause/Remedy
3.0	ECL and windshield washer level: ECL level switch (S41), windshield washer level switch (S42) and wiring	<p>A1 12 — (1B.12) — 4 (1B.4)</p>	Ignition: OFF Coolant level and windshield washer fluid level: OK Remove instrument cluster (A1) Disconnect connector 1 (30 pole).	233 - 297 Ω	Wiring ⇒ 3.1 Values O.K.: A1
3.1	ECL switch (S41)	<p>S41 1 — — 2</p>	Ignition: OFF Remove expansion tank Disconnect connector at S41 (refer to 21/10 for component location). Coolant level OK	102 - 120 Ω	S41 Values O.K.: ⇒ 3.2
3.2	Windshield washer fluid level switch (S42)	<p>S42 1 — — 2</p>	Ignition: OFF Disconnect connector at S42 (refer to 21/10 for component location). Washer fluid level OK	145 - 185 Ω	S42

Electrical Test Program – Test



P54.30-0243-13

Figure 1
7 Photo transistor