

# 1.14 Instrument Cluster (IC) Models 129, 140, 170, 202 (as of 6/97), Models 208, 210 (as of 3/97) with FSS

## Electrical Test Program – Component Locations

Models 129, 140, 170, 202, 208, 210

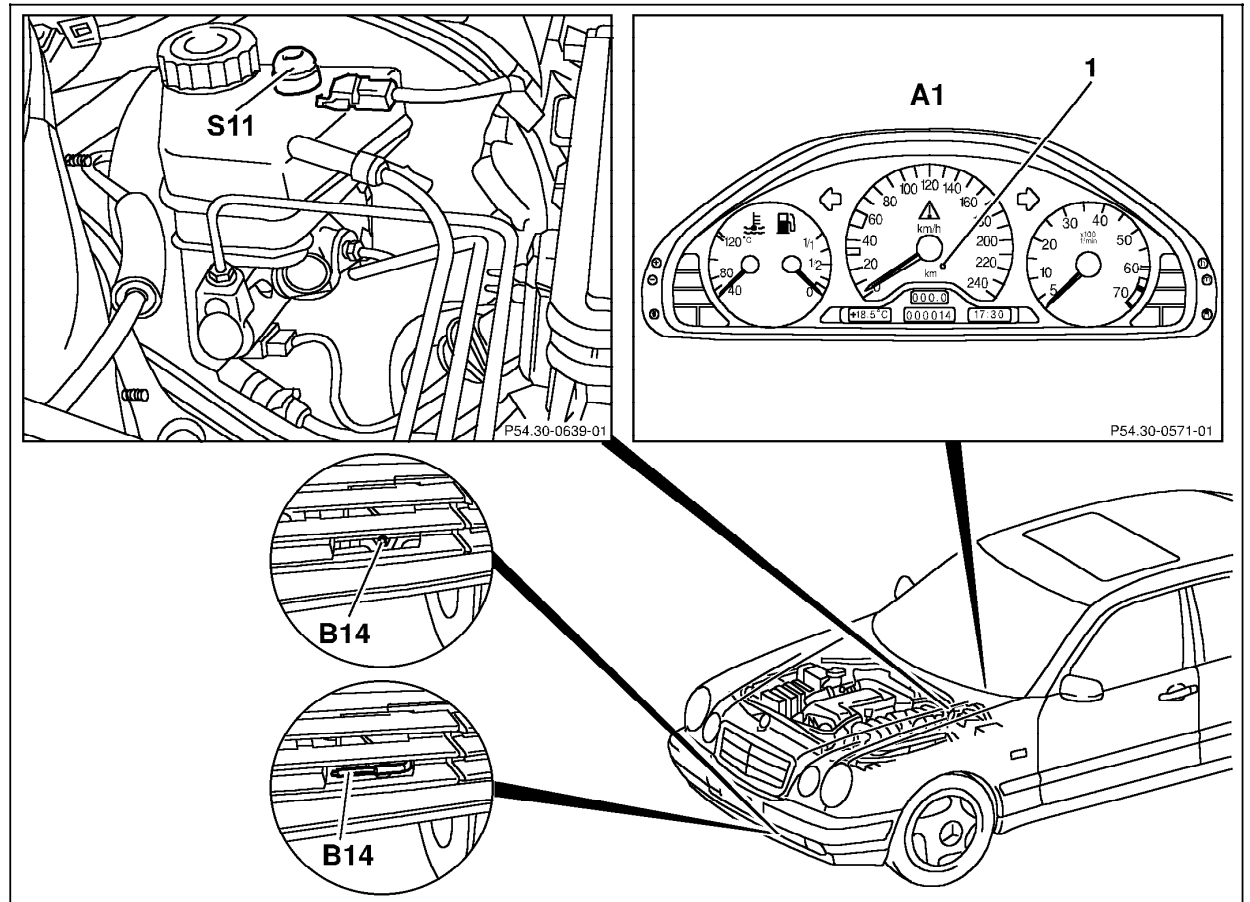


Figure 1

- 1 Phototransistor (Model 202, 208, 210)
- A1 Instrument Cluster (IC) view of multi-functional Instrument Cluster
- B14 Temperature sensor for outside temperature indicator (one or the other version installed)
- S11 Brake fluid level switch

P54.30-0635-06

# 1.14 Instrument Cluster (IC) Models 129, 140, 170, 202 (as of 6/97), Models 208, 210 (as of 3/97) with FSS

## Electrical Test Program – Component Locations

### Model 129

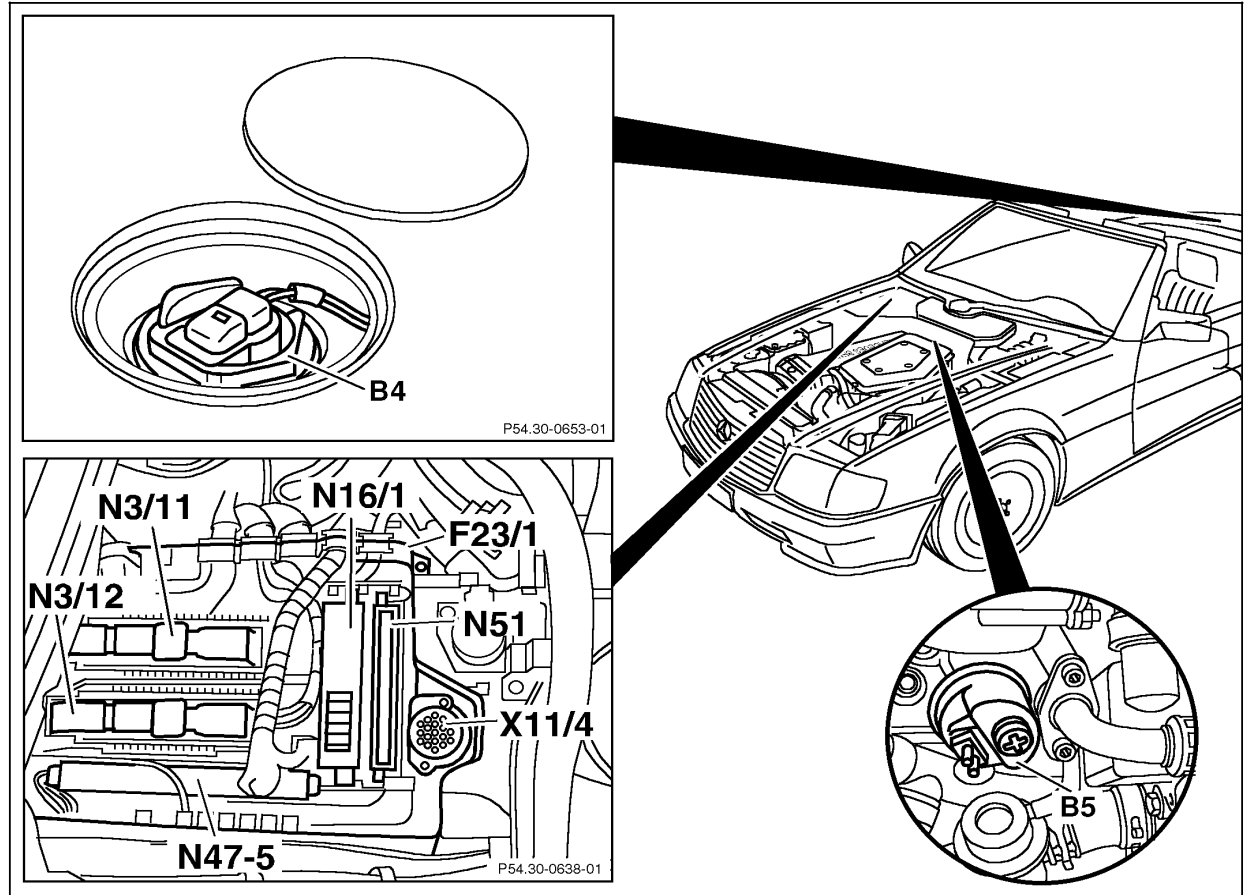


Figure 2

- B4 Fuel level sensor
- B5 Oil pressure sensor  
(Engine 119: right front;  
engine 104, 120: left rear)
- F23/1 Control module box
- N3/11 Left engine control module (ME-SFI) (12-cylinder)
- N3/12 Right engine control module (ME-SFI) (12-cylinder)
- N16/1 Base module
- N47-5 ESP - SPS control module
- N51 ADS control module
- X11/4 Data link connector

P54.30-0636-06

## 1.14 Instrument Cluster (IC) Models 129, 140, 170, 202 (as of 6/97), Models 208, 210 (as of 3/97) with FSS

### Electrical Test Program – Component Locations

#### Model 140

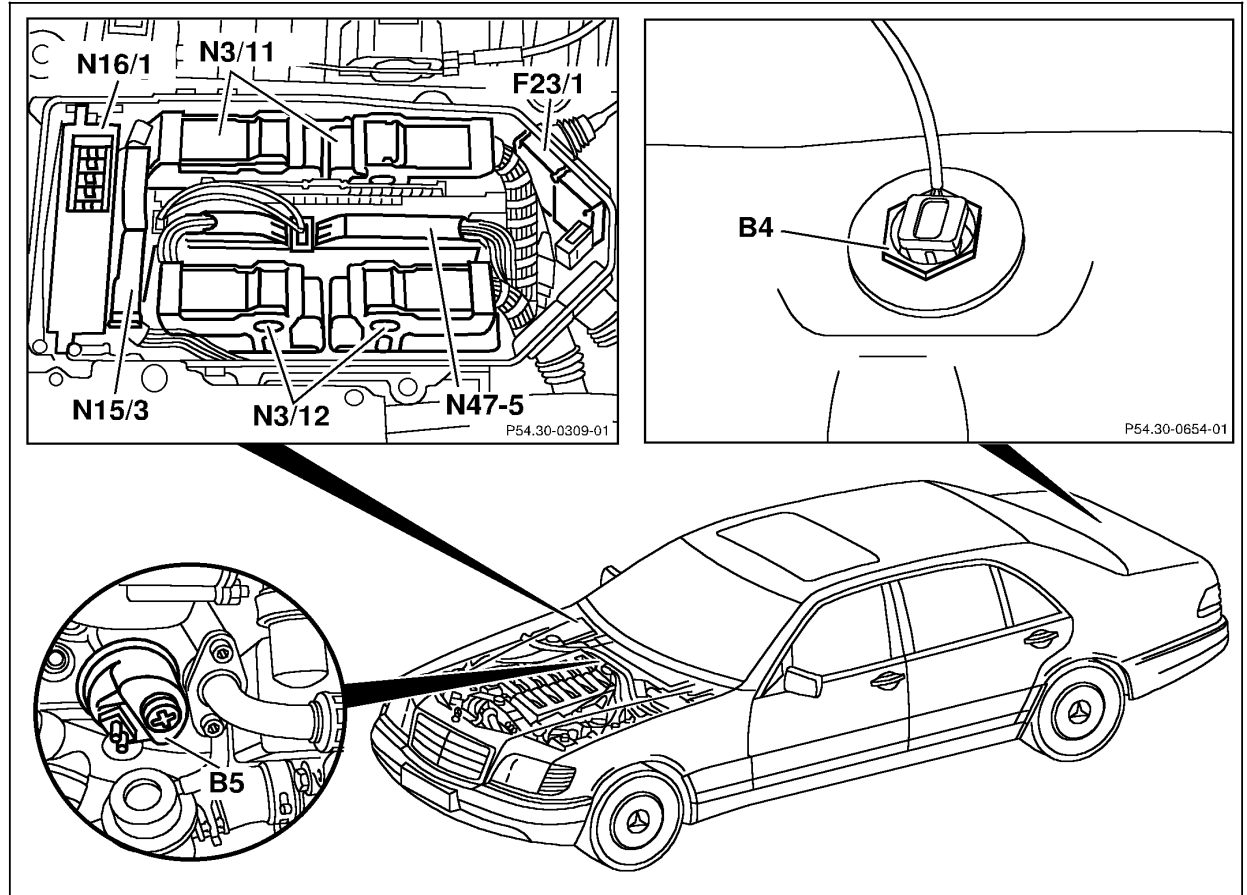


Figure 3

- B4 Fuel level sensor
- B5 Oil pressure sensor  
(Engine 119: right front;  
engine 104, 120: left rear)
- F23/1 Control module box
- N3/11 Left engine control module (ME-SFI) (12-cylinder)
- N3/12 Right engine control module (ME-SFI) (12-cylinder)
- N15/3 Transmission control module
- N16/1 Base module
- N47-5 ESP - SPS control module

P54.30-0637-06

## 1.14 Instrument Cluster (IC) Models 129, 140, 170, 202 (as of 6/97), Models 208, 210 (as of 3/97) with FSS

### Electrical Test Program – Component Locations

#### Model 170

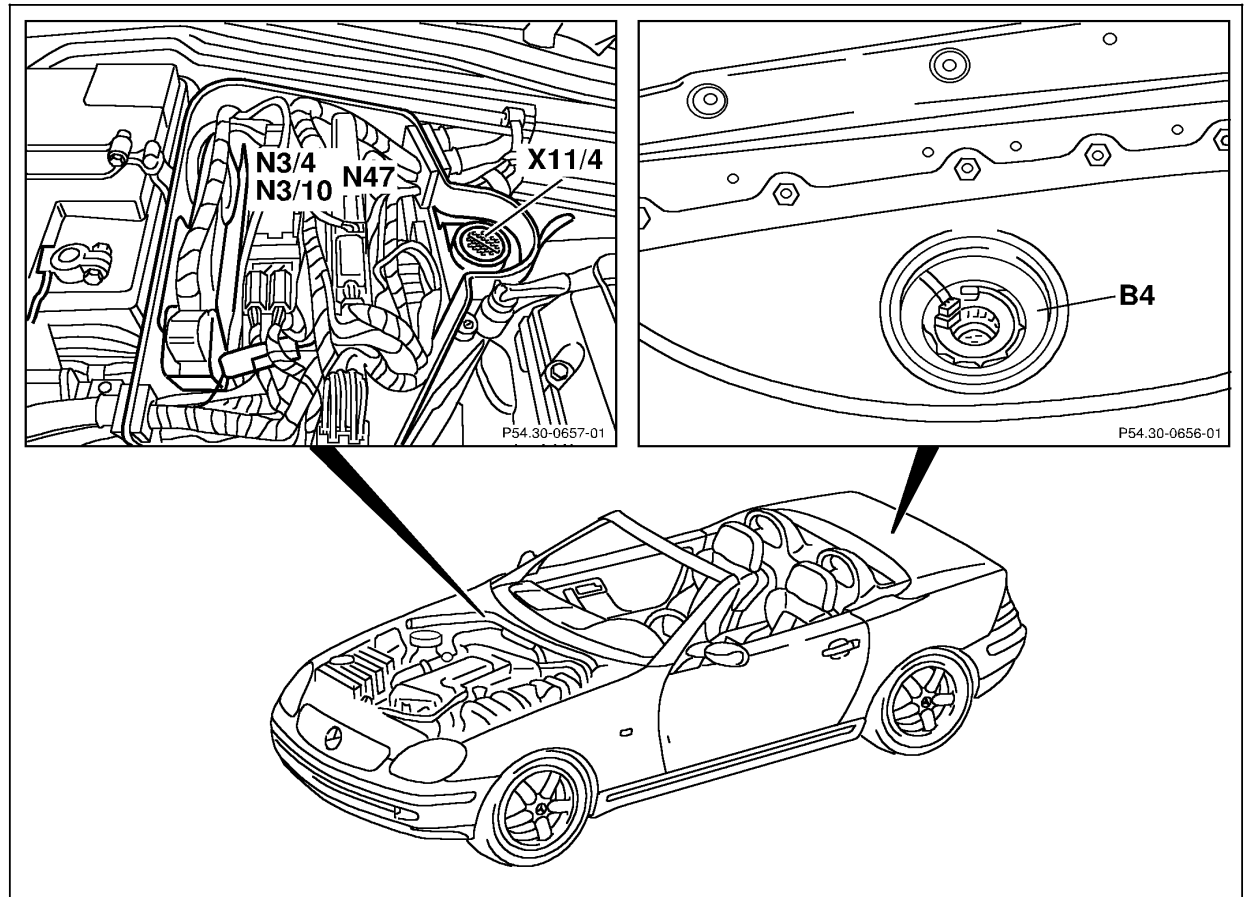


Figure 4

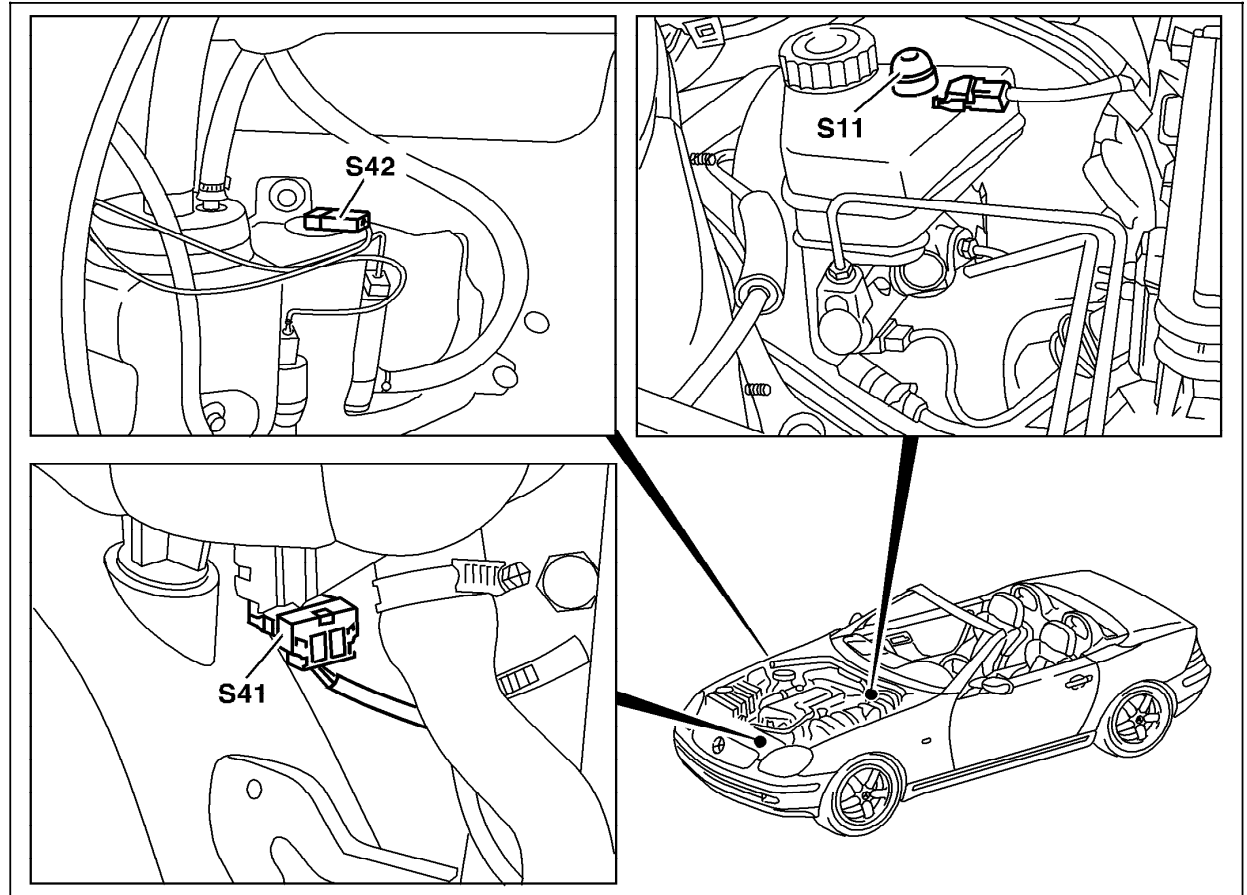
- B4 Fuel level sensor
- N3/10 Engine control module (ME-SFI)
- N47 Traction systems control module
- X11/4 Data link connector

P54.30-0650-06

# 1.14 Instrument Cluster (IC) Models 129, 140, 170, 202 (as of 6/97), Models 208, 210 (as of 3/97) with FSS

## Electrical Test Program – Component Locations

Model 170



P54.30-0441-06

# 1.14 Instrument Cluster (IC) Models 129, 140, 170, 202 (as of 6/97), Models 208, 210 (as of 3/97) with FSS

## Electrical Test Program – Component Locations

### Model 202

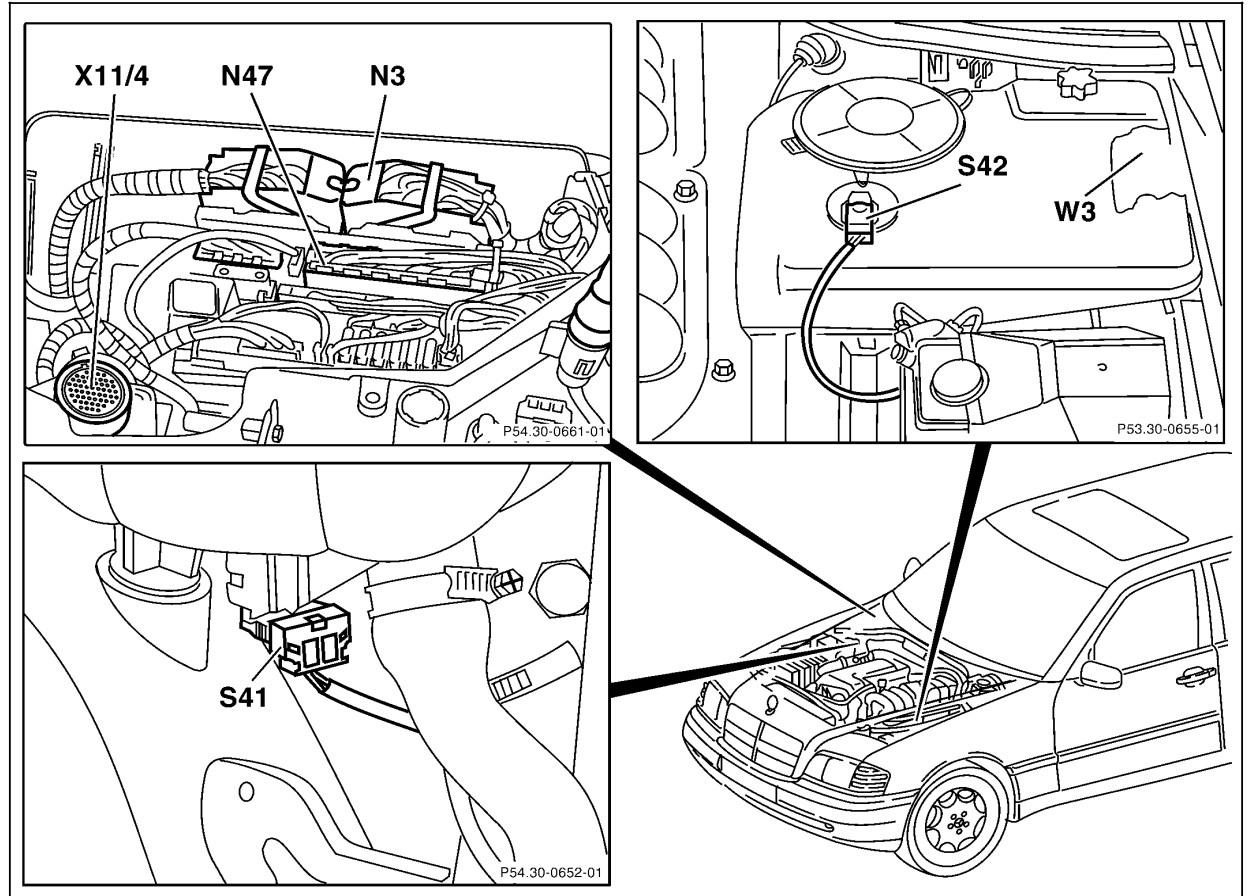


Figure 6

- N3 Engine control module
- N47 Traction systems control module
- S41 ECL switch
- S42 Windshield washer fluid level switch
- W3 Ground (left front wheel well housing at ignition coil)
- X11/4 Data link connector

P54.30-0640-06

# 1.14 Instrument Cluster (IC) Models 129, 140, 170, 202 (as of 6/97), Models 208, 210 (as of 3/97) with FSS

## Electrical Test Program – Component Locations

Model 202

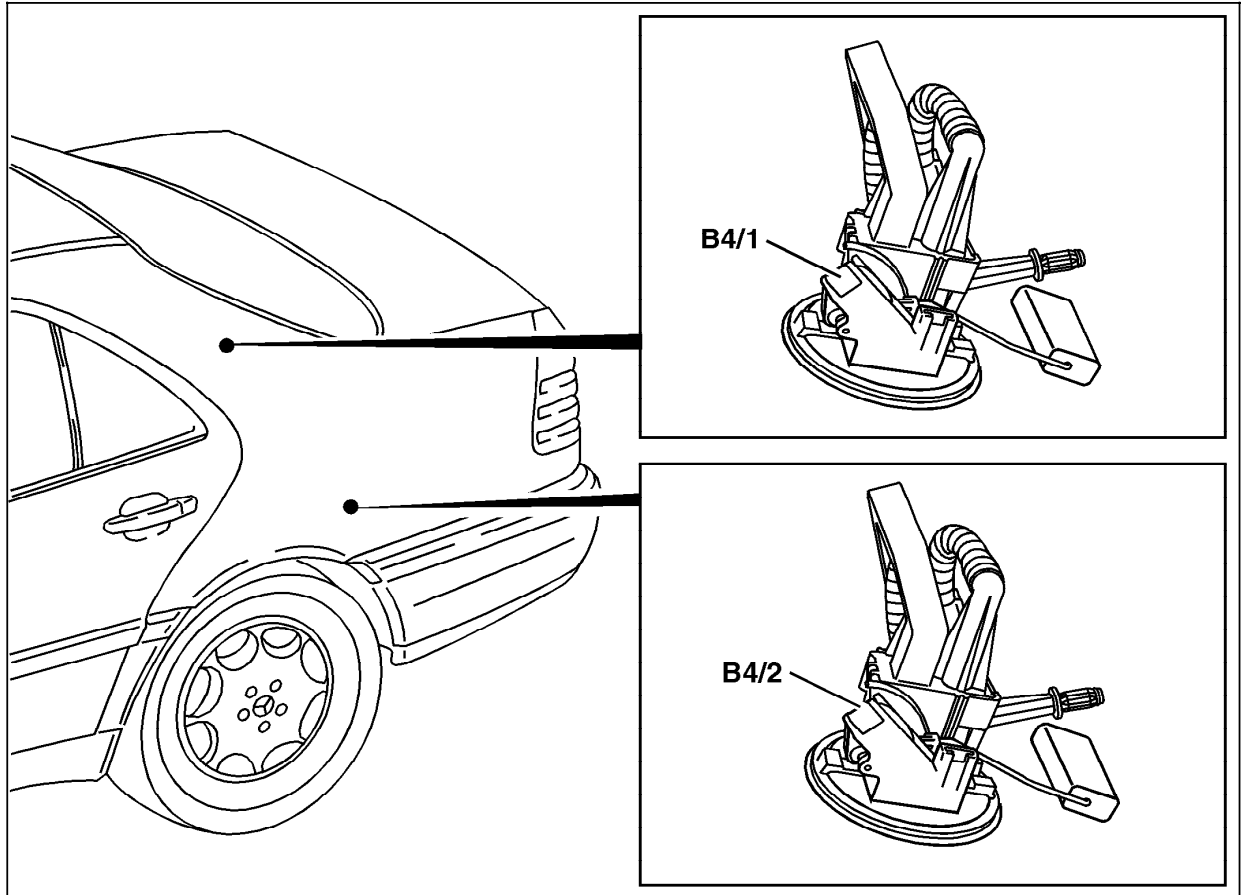


Figure 7

B4/1 Left fuel level sensor  
B4/1 Right fuel level sensor



The fuel sensors are accessible from underneath of the vehicle.

P54.30-0664-06

# 1.14 Instrument Cluster (IC) Models 129, 140, 170, 202 (as of 6/97), Models 208, 210 (as of 3/97) with FSS

## Electrical Test Program – Component Locations

Model 208

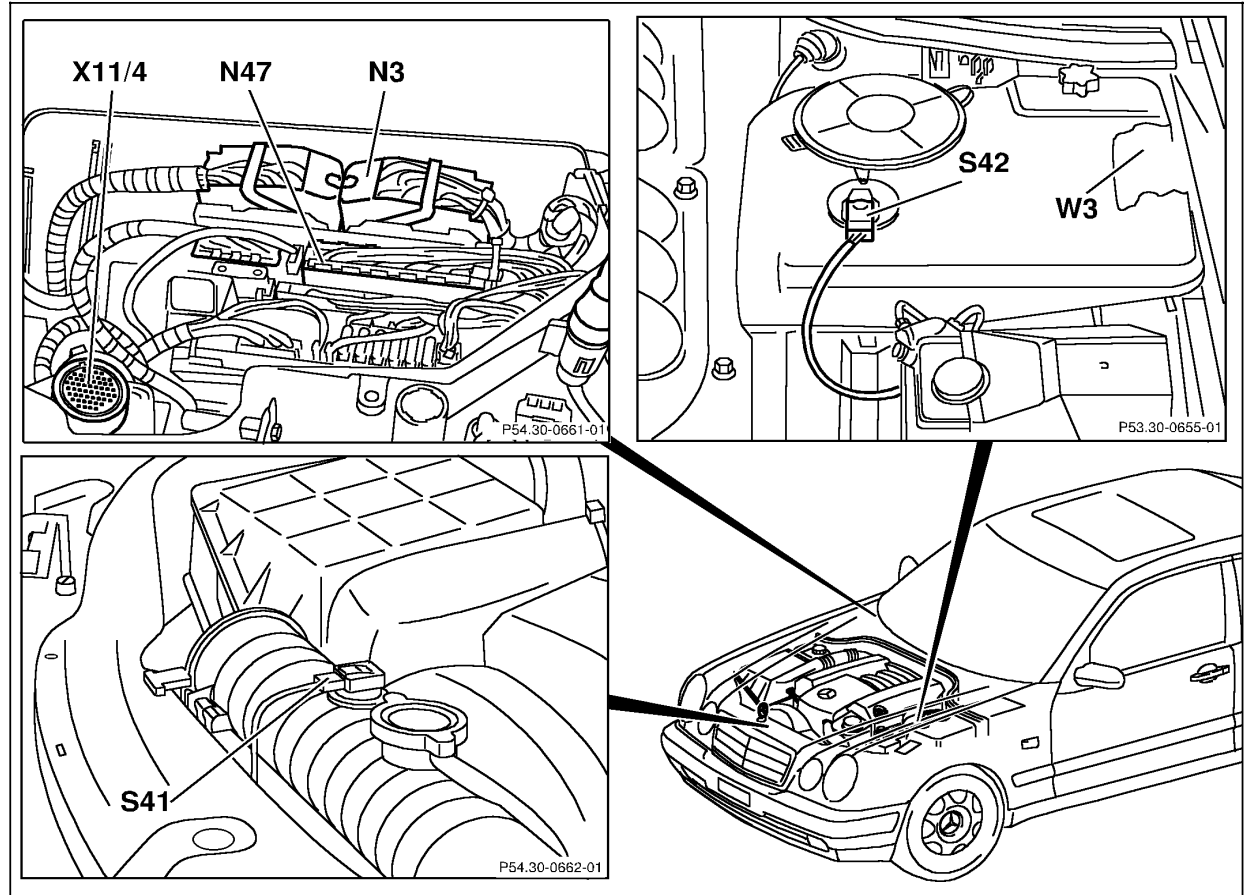


Figure 8

- N3 Engine control module
- N47 Traction systems control module
- S41 ECL switch
- S42 Windshield washer fluid level switch
- W3 Ground (left front wheel well housing at ignition coil)
- X11/4 Data link connector



# 1.14 Instrument Cluster (IC) Models 129, 140, 170, 202 (as of 6/97), Models 208, 210 (as of 3/97) with FSS

## Electrical Test Program – Component Locations

### Model 210

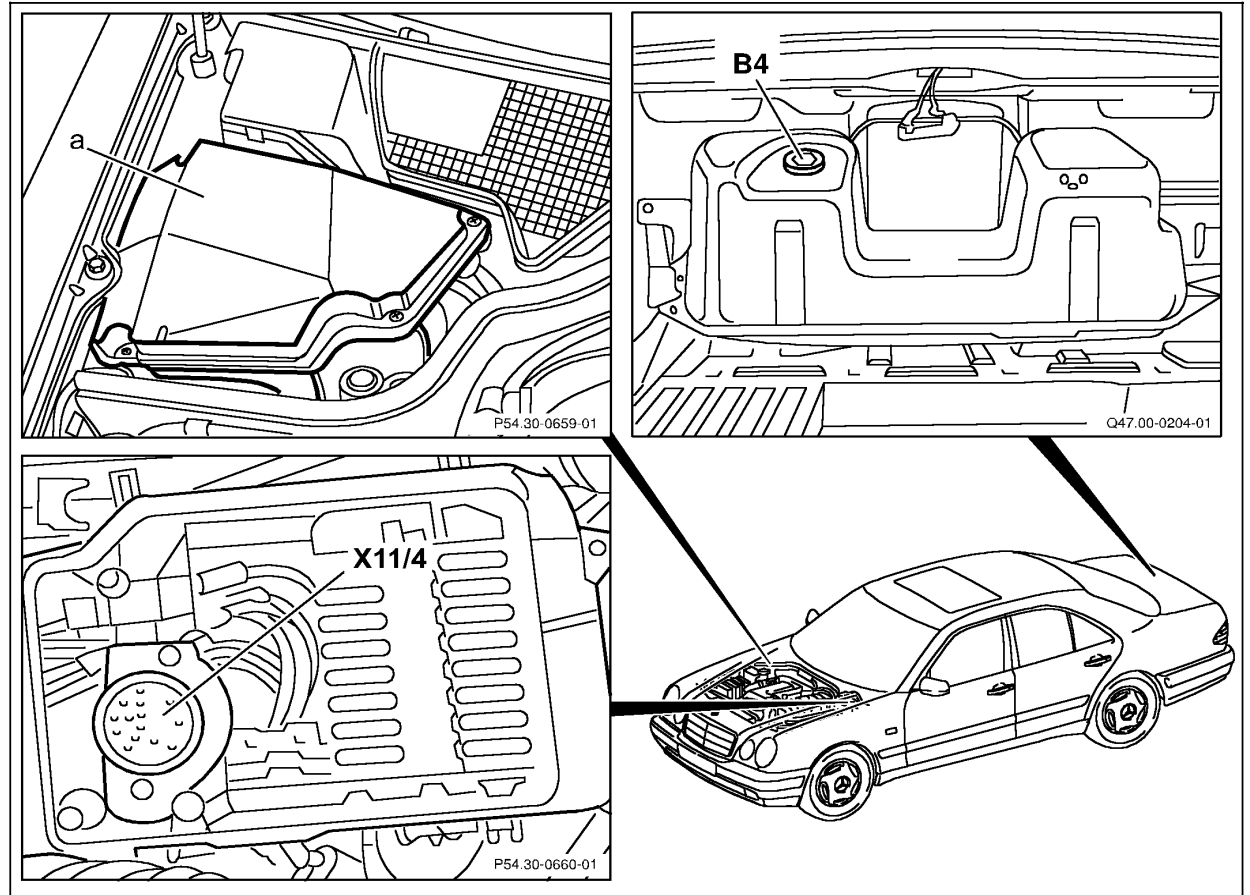


Figure 9

- B4 Fuel level sensor
- X11/4 Data link connector (DTC readout)
- a Control module box

P54.30-0648-06

# 1.14 Instrument Cluster (IC) Models 129, 140, 170, 202 (as of 6/97), Models 208, 210 (as of 3/97) with FSS

## Electrical Test Program – Component Locations

### Model 210

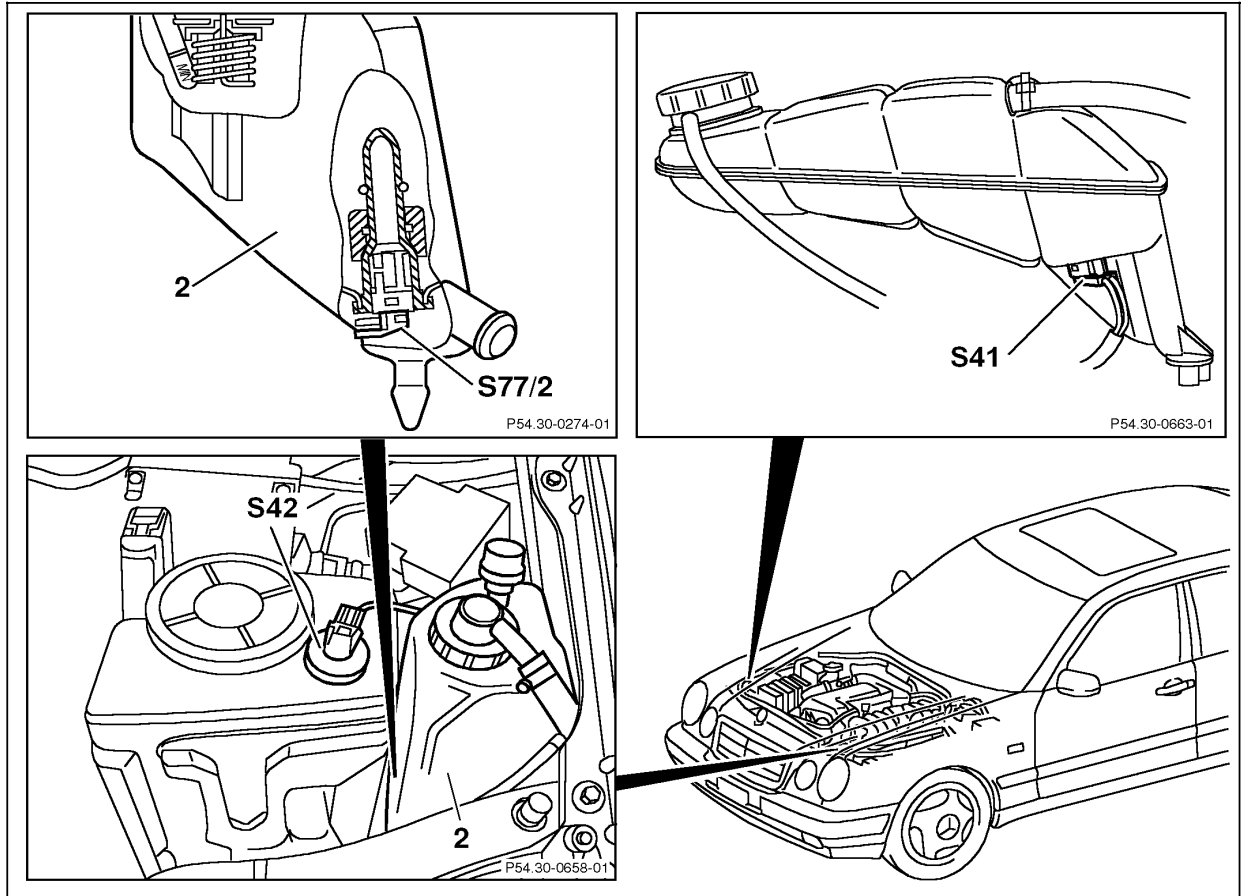


Figure 10

- 2 Power steering and leveling system hydraulic fluid container
- S41 ECL switch
- S42 Windshield washer fluid level switch
- S77/2 Hydraulic fluid level switch

P54.30-0649-06