

4.4 Antenna Systems (AS)

Models 163, 202 as of 01/97, 208 (except 208.465), 210

Electrical Test Program – Component Locations

Models 202 as of 01/98, 208 (except Cabrio)



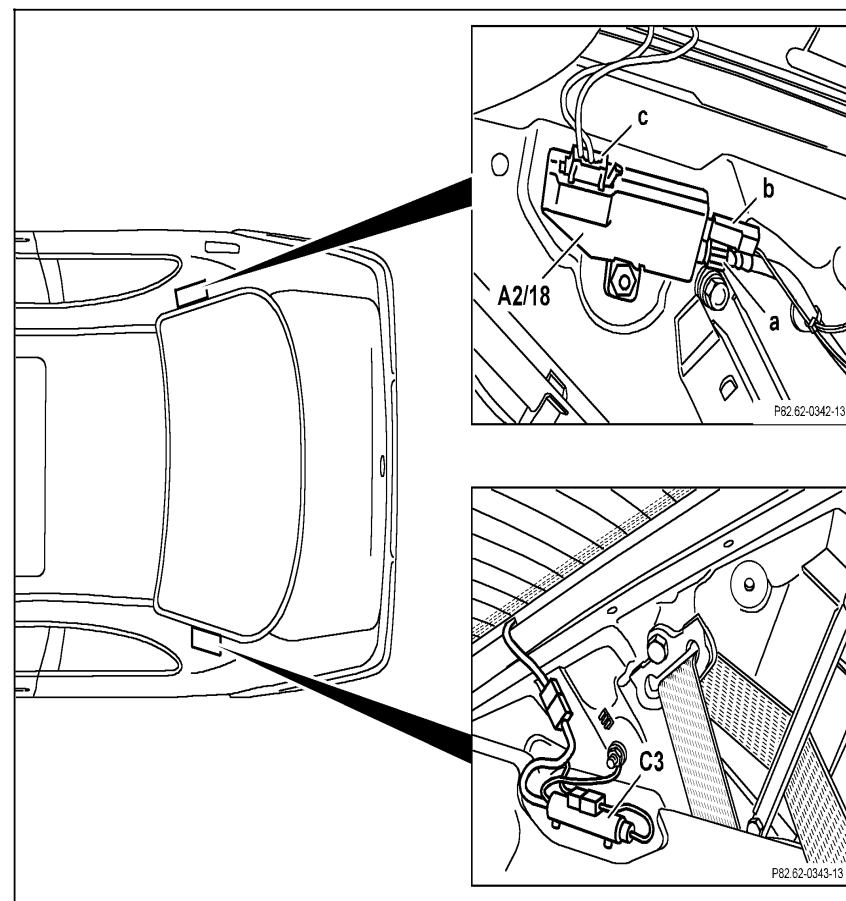
The illustration shows locations of components in model 208, model 202 is similar.

Figure 1

- a High frequency connection wire from FM/AM amplifier to radio (A2)
- b Voltage supply from radio (A2) to FM/AM amplifier (A2/18)
- c Signal from rear window antenna

A2/18 FM/AM amplifier

C3 not in US vehicles



P82.62-0341-06

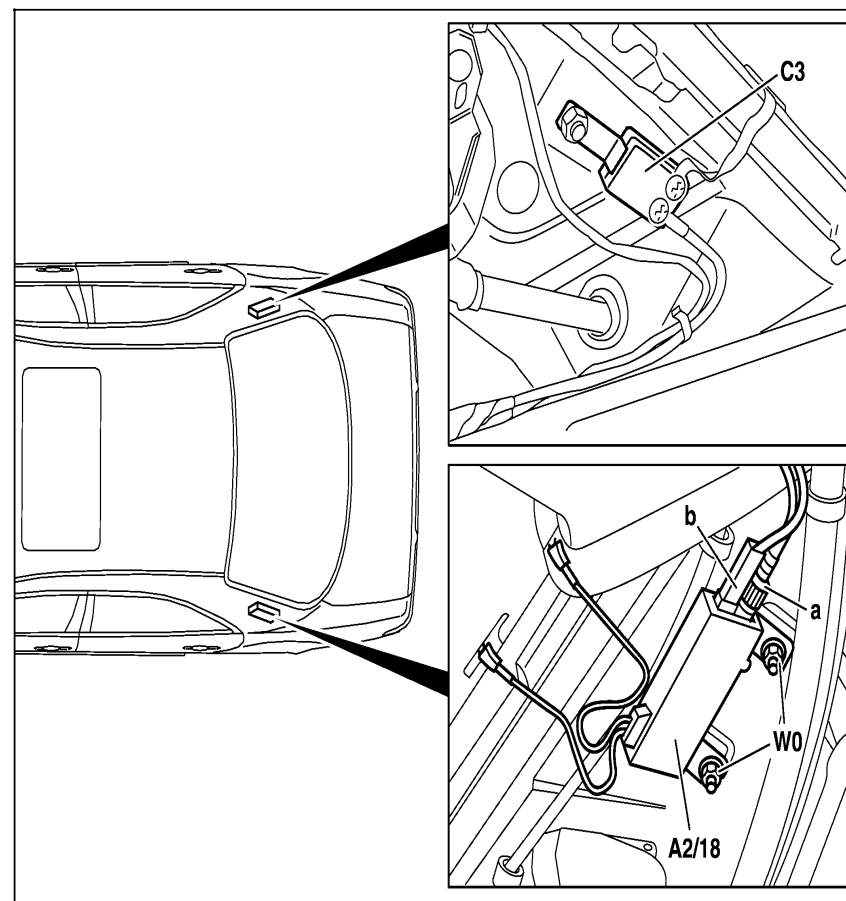
Electrical Test Program – Component Locations

Models 210.0

Figure 2

- a High frequency connection wire from FM/AM amplifier to radio (A2)
- b Voltage supply from radio (A2) to FM/AM amplifier (A2/18)

A2/18 FM/AM amplifier
 C3 not in US vehicles
 W0 Ground



P82.62-2019-06

Electrical Test Program – Component Locations

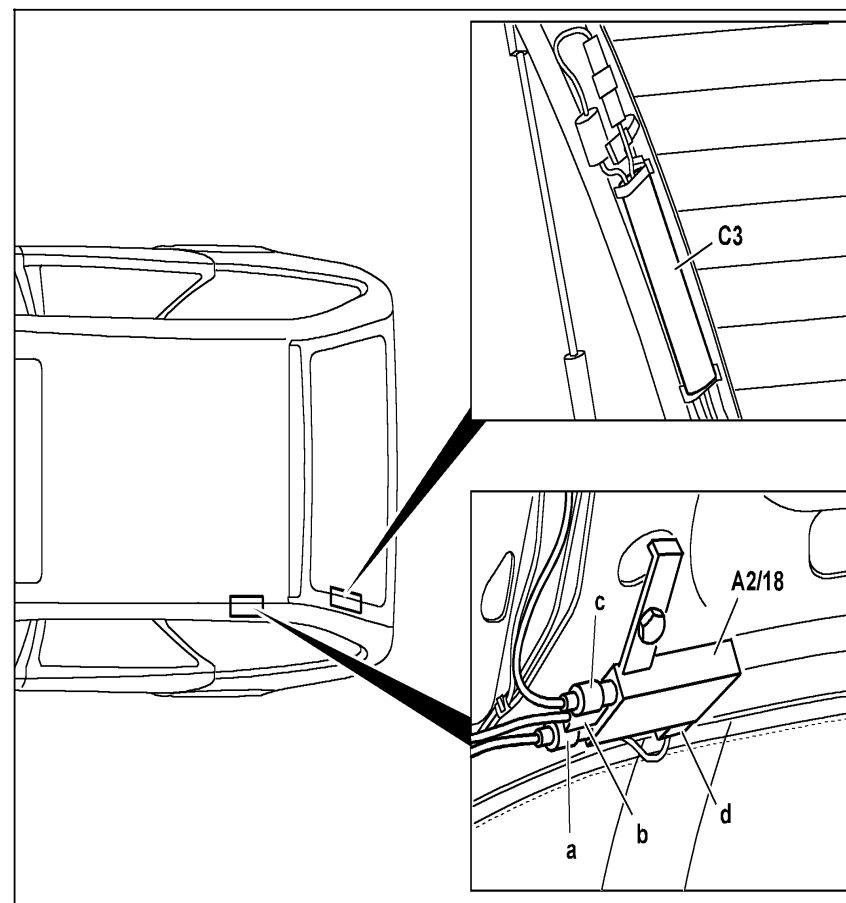
Models 210.2

Figure 3

- a High frequency connection wire from FM/AM amplifier to radio (A2)
- b Voltage supply from radio (A2) to FM/AM amplifier (A2/18)
- c not in US vehicles
- d Signal wire from side window antenna

A2/18 FM/AM amplifier

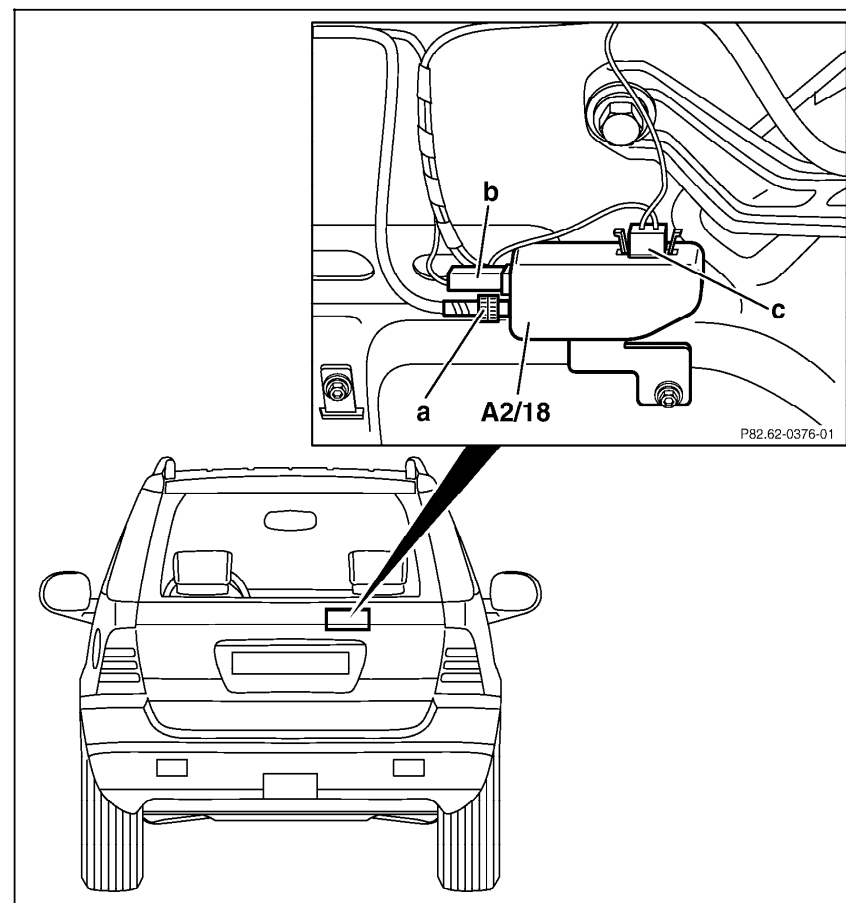
C3 not in US vehicles



P82.62-0335-06

Electrical Test Program – Component Locations

Model 163



P82.62-0376-01

P82.62-0374-12

Figure 4

- a High frequency connection wire from FM/AM amplifier to radio (A2)
- b Voltage supply from radio (A2) to FM/AM amplifier (A2/18)
- c Signal wire from antenna

A2/18 FM/AM amplifier