

Electrical Test Program - Component Locations

Electrical Components in Engine Compartment and in Instrument Cluster Model 124

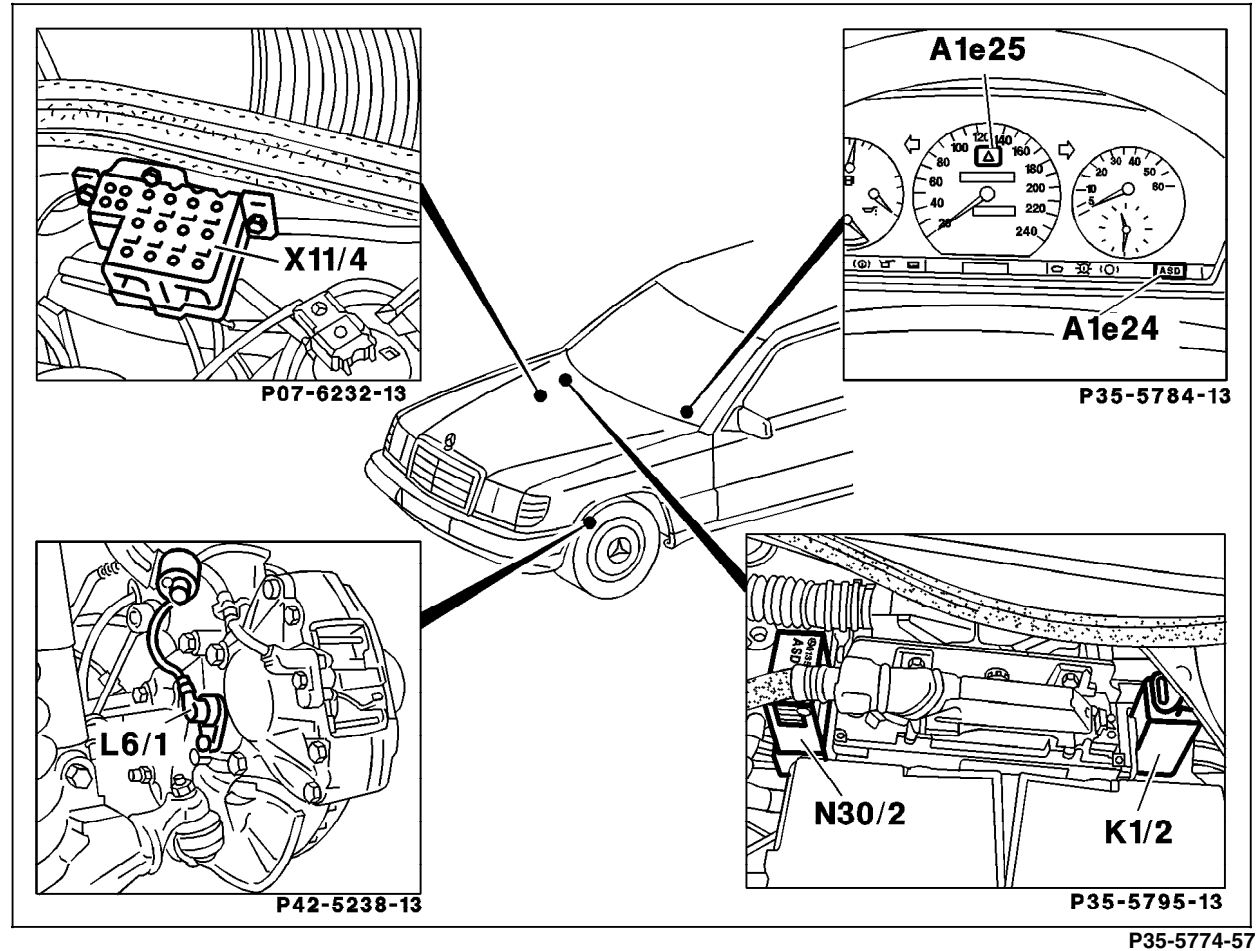


Figure 1

- A1e24 ASD malfunction indicator lamp
- A1e25 ASD function indicator lamp
- L6/1 Left front axle vehicle speed sensor
- L6/2 Right front axle vehicle speed sensor
- K1/2 Overvoltage protection relay module (87E/87L/30a, 9-pole)
- N30/2 ASD control module
- X11/4 Data link connector, 16-pole (DTC readout)

Electrical Test Program - Component Locations

Electrical Components in Right Rear Chassis,
Rear Axle and Passenger Compartment
Model 124

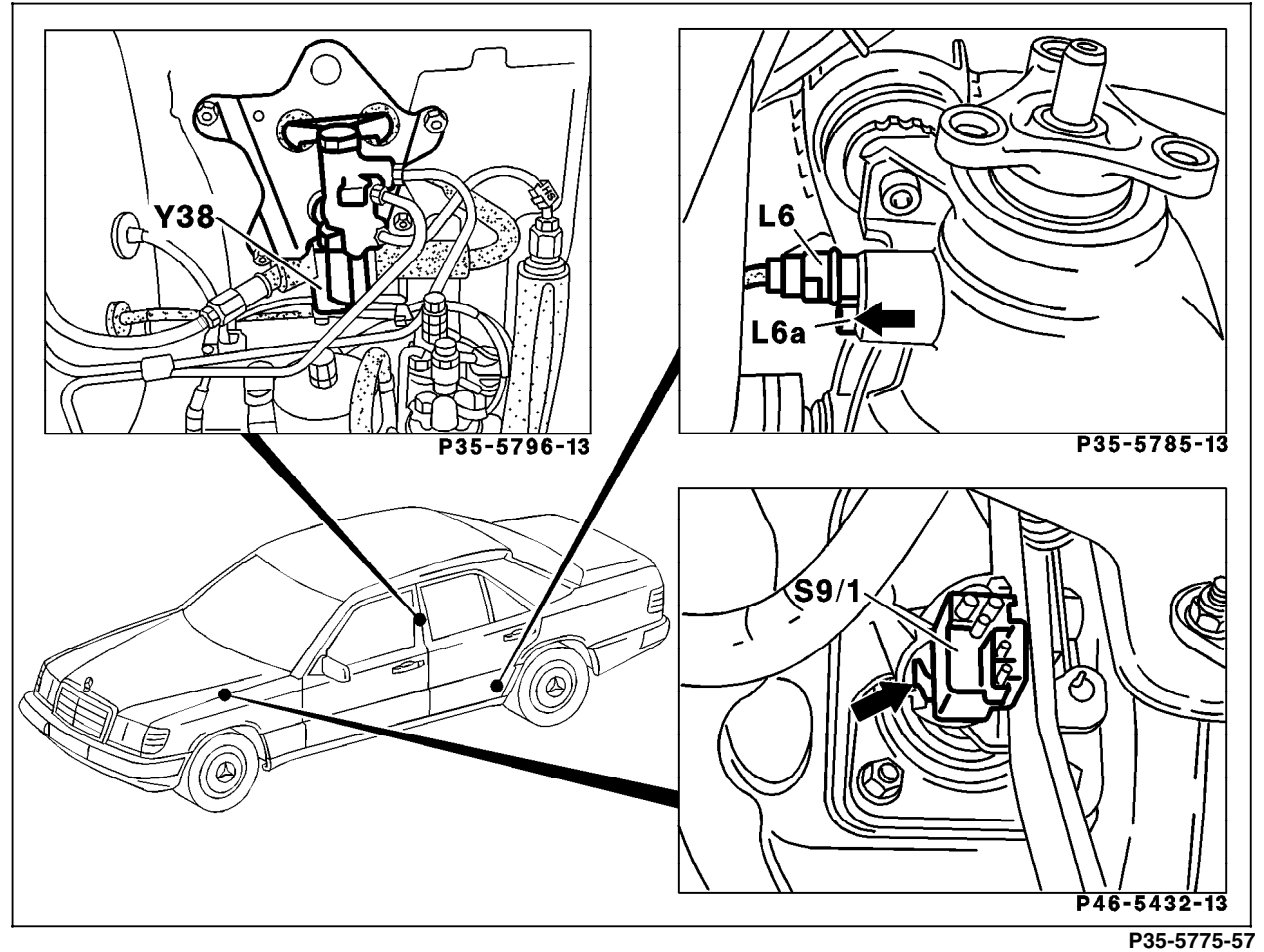


Figure 2

- L6 Rear axle vehicle speed sensor
- S9/1 Stop lamp switch (4-pole)
- Y38 ASD valve

Electrical Test Program - Component Locations

Electrical Components in Engine Compartment,
and Passenger Compartment
Model 129

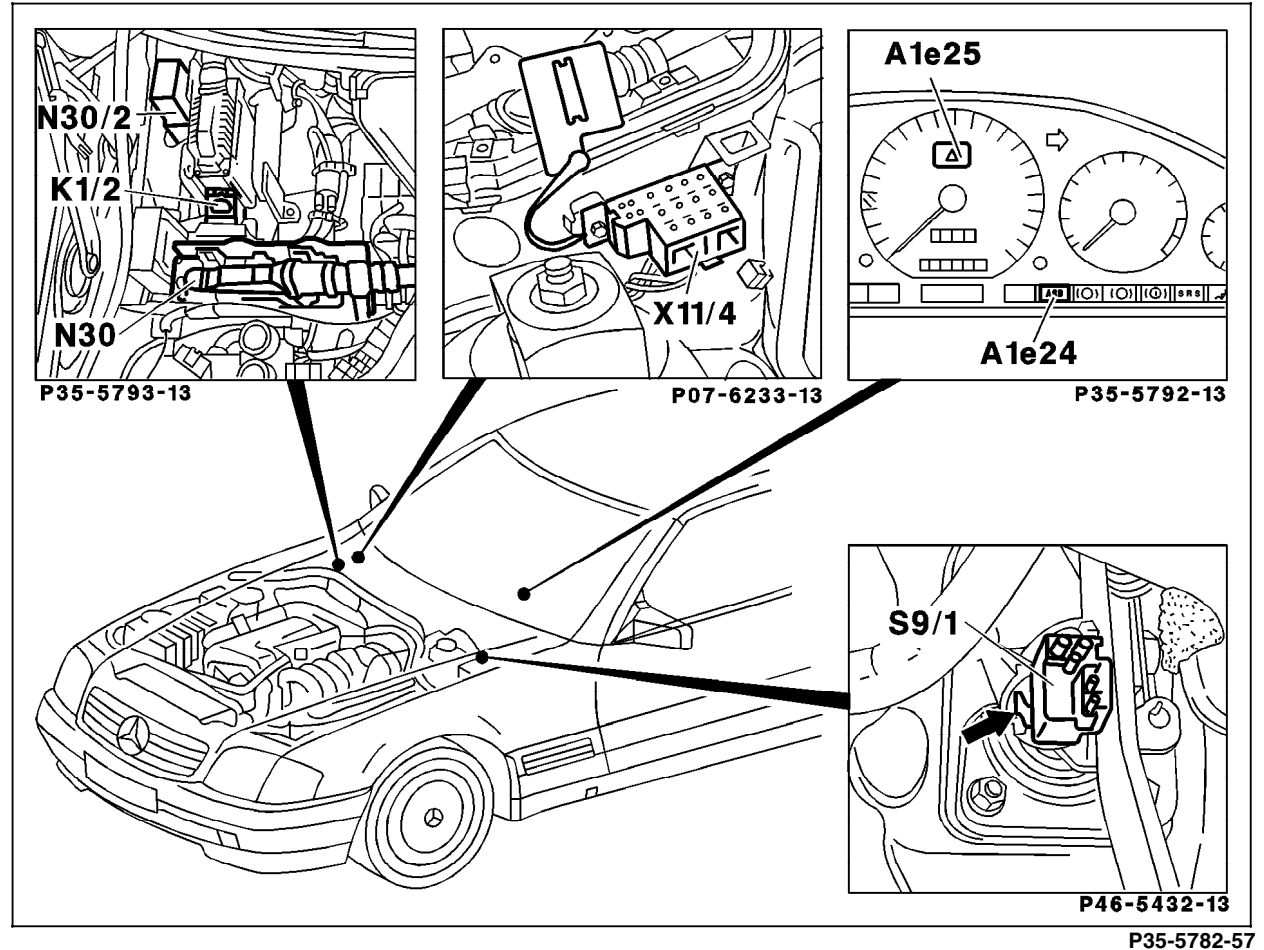


Figure 3

- A1e24 ASD malfunction lamp
- A1e25 ASD function indicator lamp
- K1/2 Overvoltage protection relay module (87E/87L/30a, 9-pole)
- N30 ABS control module
- N30/2 ASD control module
- S9/1 Stop lamp switch (4-pole)
- X11/4 Data link connector, 16-pole or 38-pole (DTC readout)

Electrical Test Program - Component Locations

Electrical Components in Right Rear Chassis,
on Front and Rear Axles
Model 129 shown

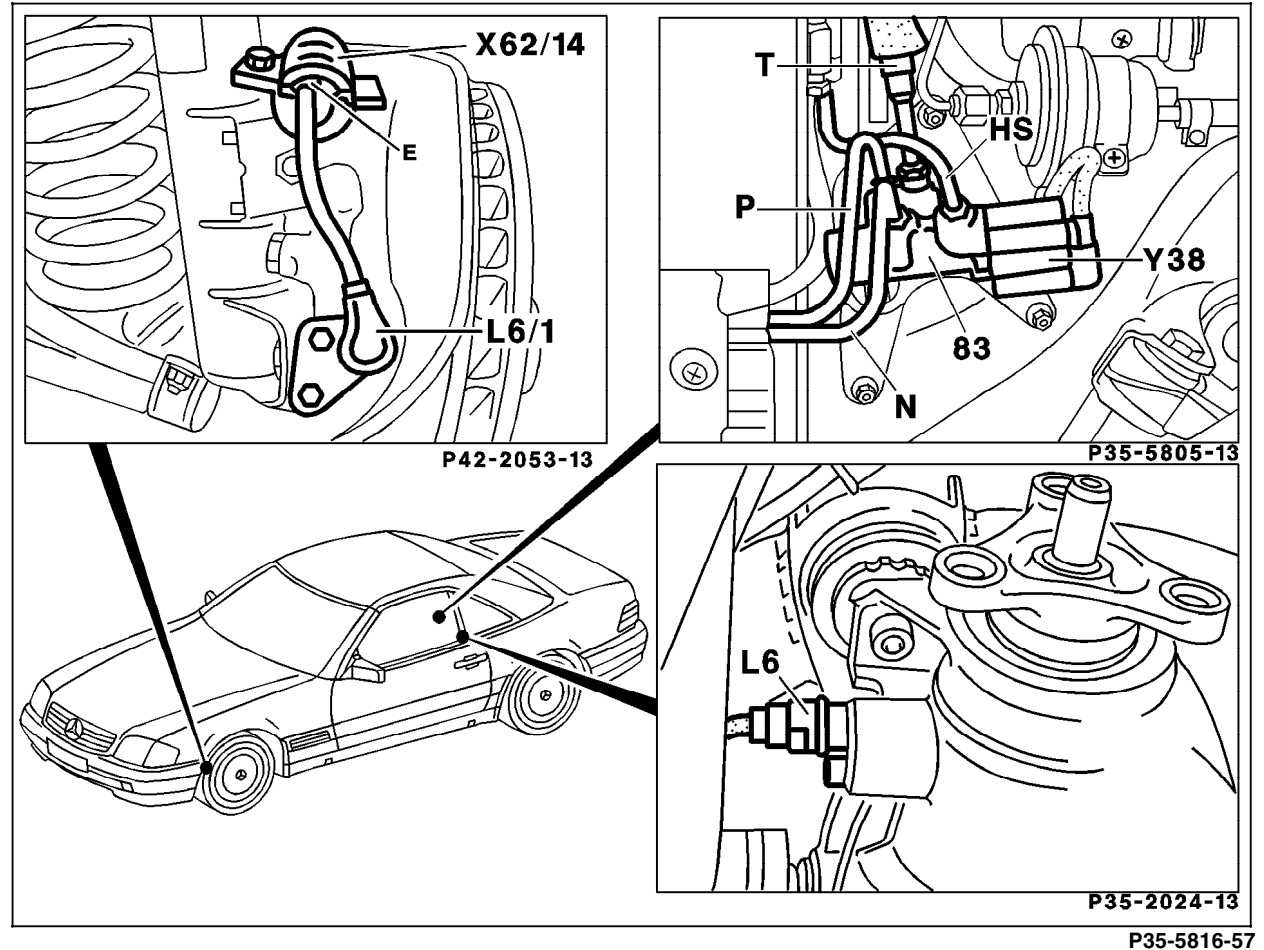


Figure 4

- L6 Rear axle vehicle speed sensor
- L6/1 Left front axle speed sensor
- L6/2 Right front axle speed sensor (mirror image of left shown)
- X62/14 Left front wheel vehicle speed sensor connector (axle spindle)
- Y38 ASD valve

Electrical Test Program - Component Locations

Electrical Components in Engine Compartment and Passenger Compartment
Model 201

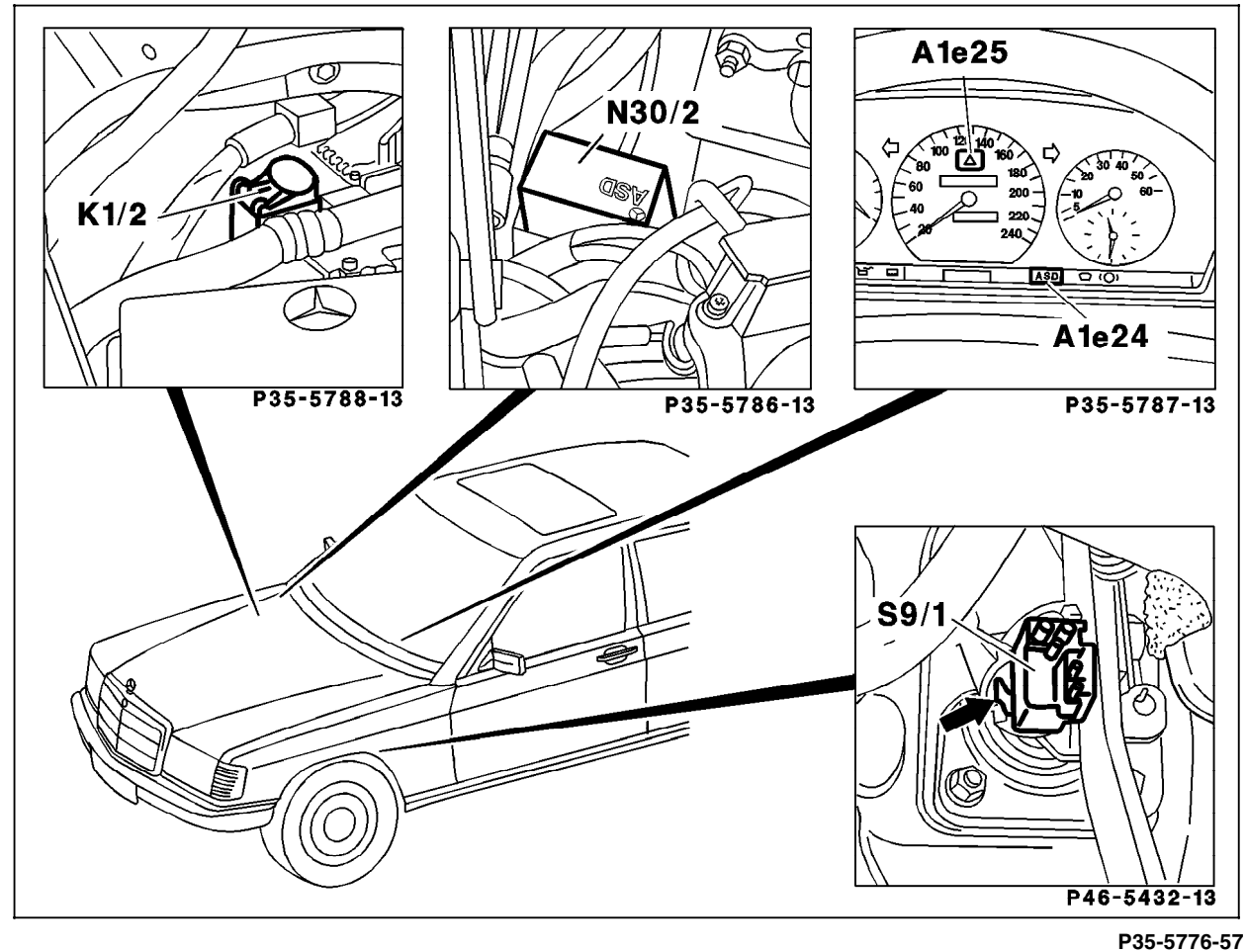


Figure 5

- A1e24 ASD malfunction indicator lamp
- A1e25 ASD function indicator lamp
- K1/2 Overtorque protection relay module (87E/87L/30a, 9-pole)
- N30/2 ASD control module
- S9/1 Stop lamp switch (4-pole)

Electrical Test Program - Component Locations

Electrical Components in Engine Compartment,
Front and Rear axle and ASD Valve Location
Model 201

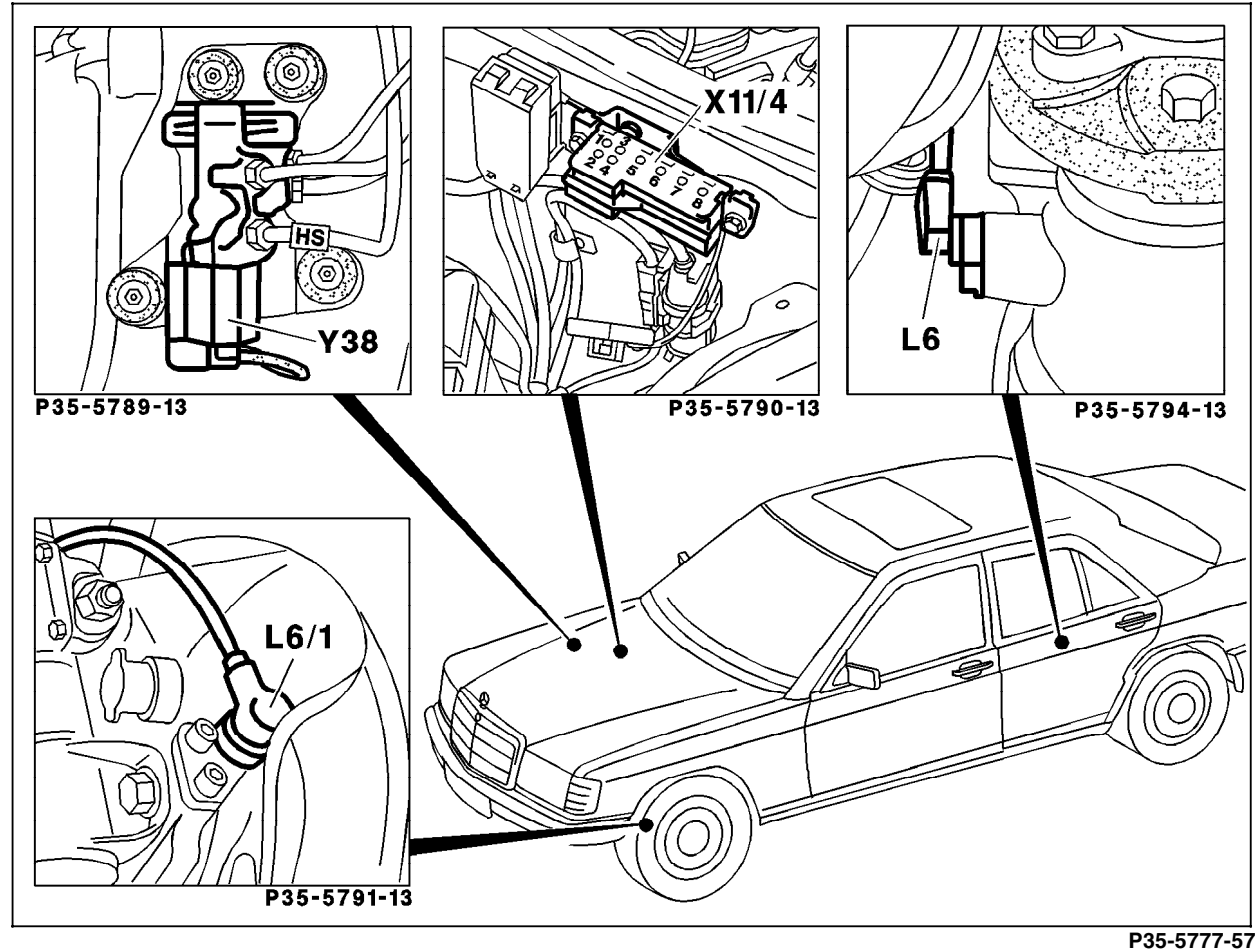


Figure 6

- L6 Rear axle speed sensor
- L6/1 Left front wheel speed sensor
- L6/2 Right front wheel speed sensor (mirror image of left shown)
- X11/4 Data link connector, (DTC readout)
- Y38 ASD valve

Electrical Test Program - Component Locations

Electrical Components in Engine Compartment,
Front Axle and Right Front Foot Well
Model 202

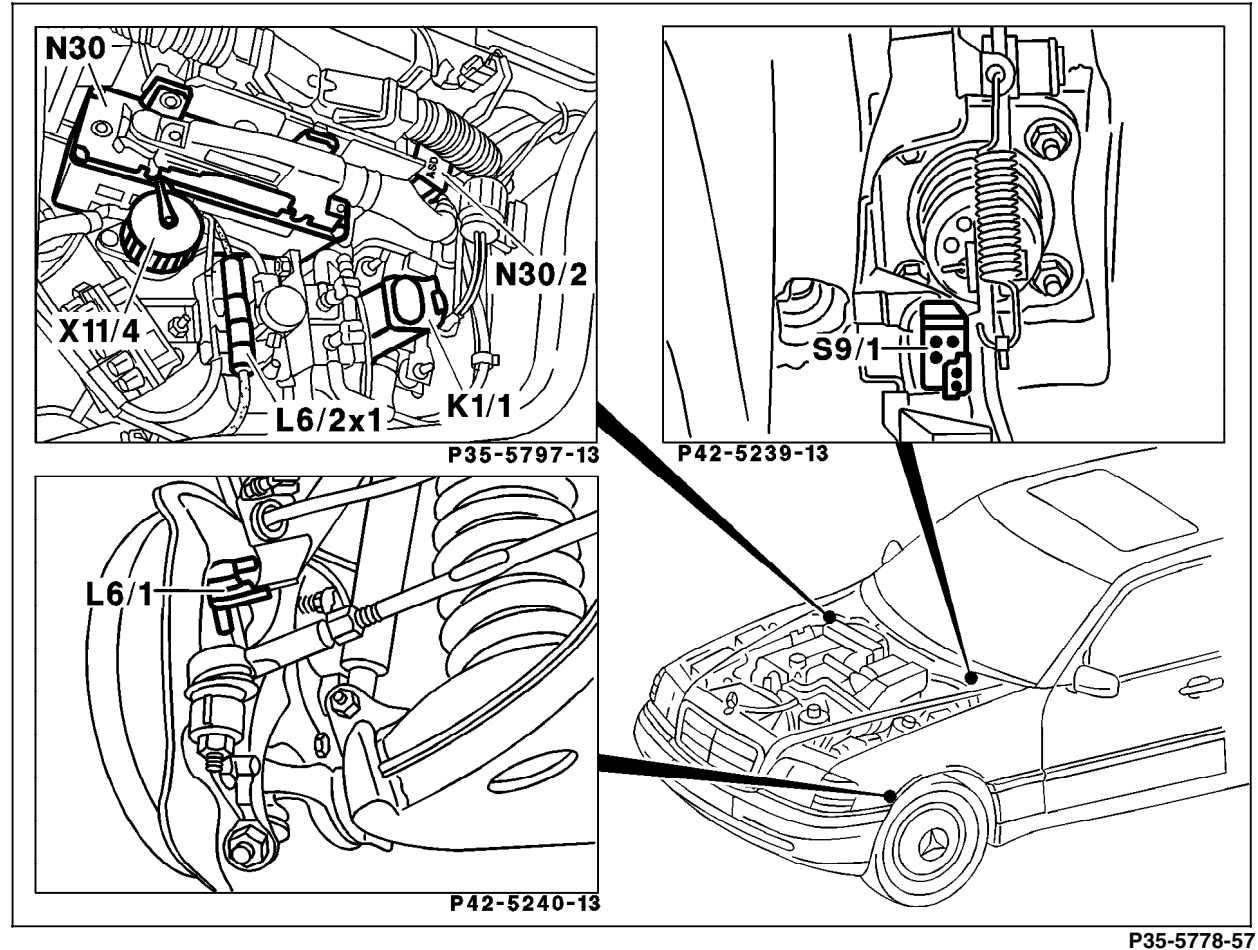


Figure 7

- L6/1 Left front wheel speed sensor
- L6/2 Right front wheel speed sensor
- L6/2x1 Right front wheel speed sensor connector
- K1/1 Overtoltage protection relay module (87E/87L/30a, 9-pole)
- N30 ABS control module
- N30/2 ASD control module
- S9/1 Stop lamp switch (4-pole)
- X11/4 Data link connector, 38-pole (DTC readout)

Electrical Test Program - Component Locations

Electrical Components in Instrument Cluster and ASD Valve Layout
Model 202

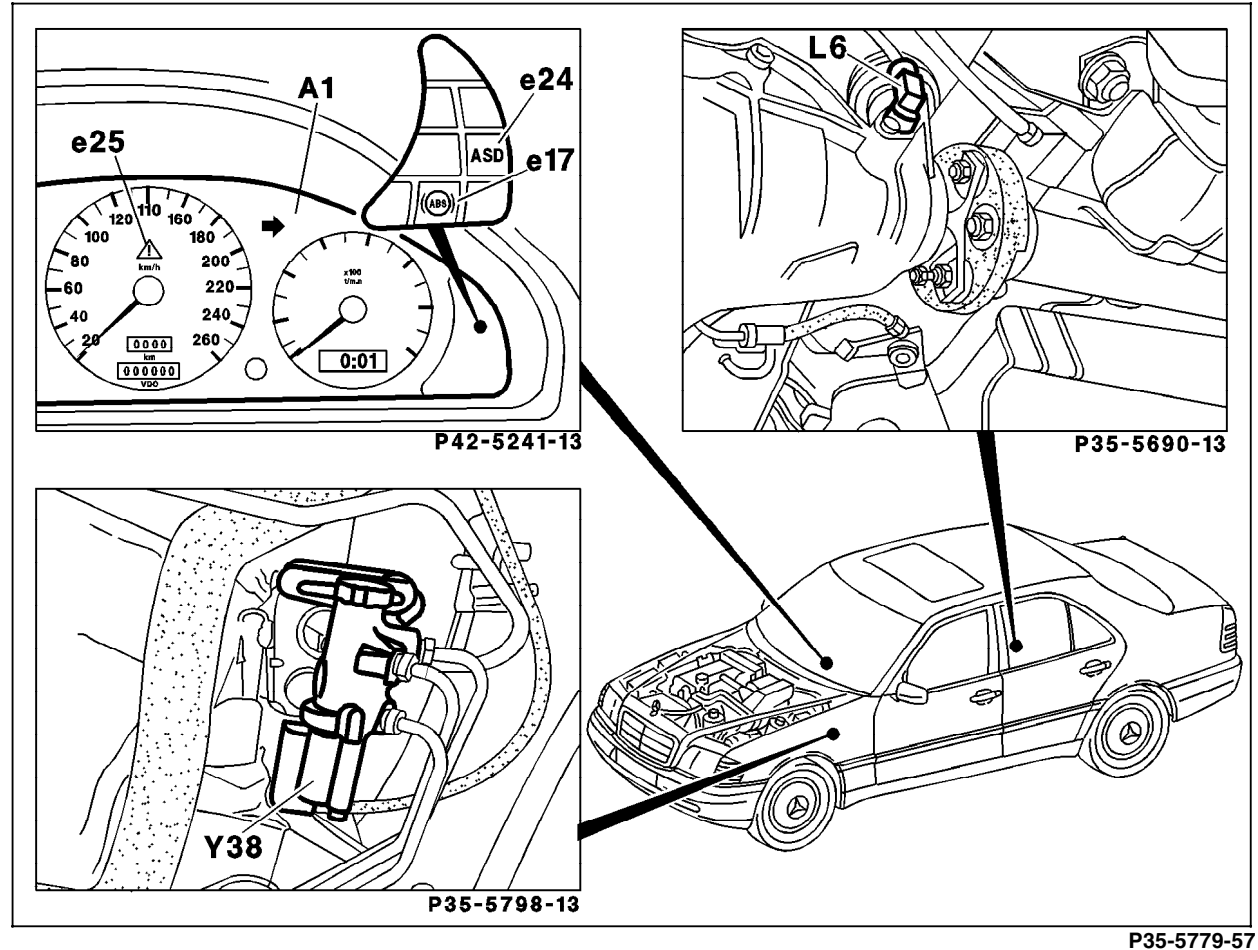


Figure 8

- A1 Instrument cluster
- A1e17 ABS malfunction indicator lamp
- A1e24 ASD malfunction indicator lamp
- A1e25 ASD function indicator lamp
- L6 Rear axle vehicle speed sensor
- Y38 ASD valve