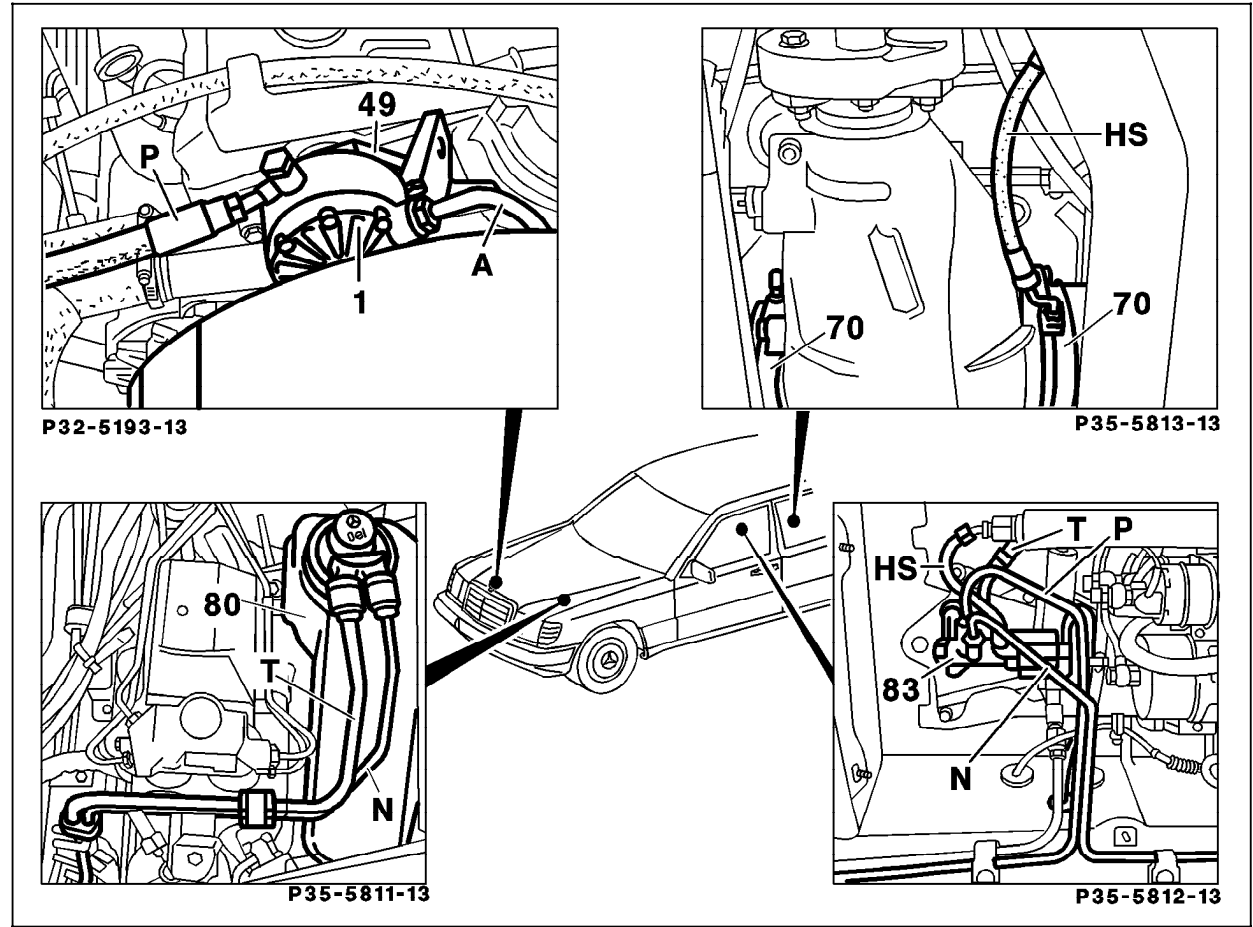


Hydraulic Test Program - Component Locations

Hydraulic Components Locations
Model 124 with engine 602



P35-5817-57

Figure 1

- 1 Hydraulic oil pump (camshaft driven)
- 70 Ring cylinder
- 80 Oil reservoir
- 83 Hydraulic unit without pressure reservoir
- A Suction line-from oil reservoir to pressure pump
- HS Pressure line from hydraulic unit to ring cylinder
- T Return line - hydraulic unit to oil reservoir
- N Without leveling function:
Return line - hydraulic unit to oil reservoir
- With leveling function:
Return line - leveling valve to oil reservoir
- P Pressure line - pressure pump to hydraulic unit

Hydraulic Test Program - Component Locations

Hydraulic Components Locations
Model 124 with engines 104, 602.962

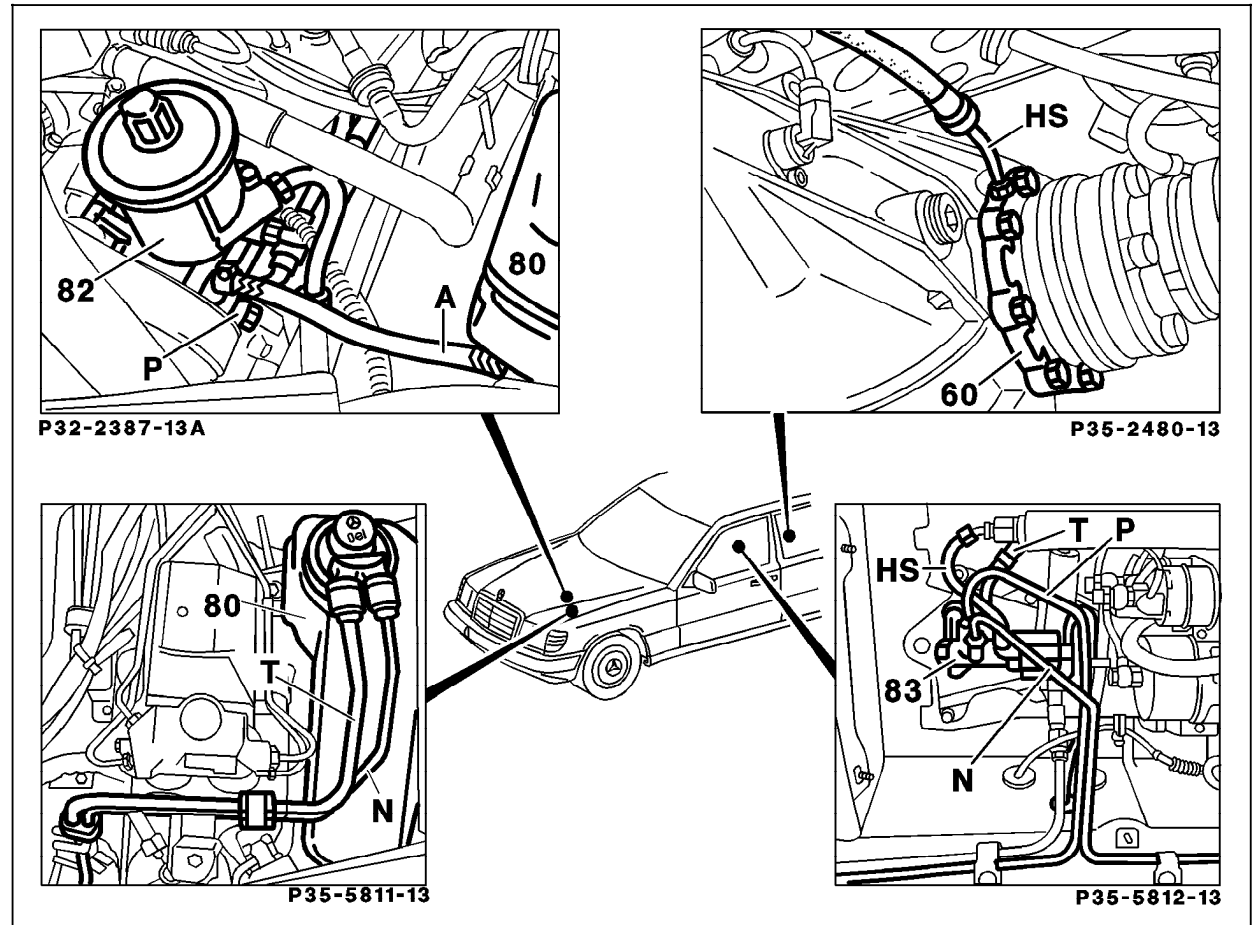


Figure 2

- 60 Bearing cover plate with ring cylinder (M104)
- 80 Hydraulic oil reservoir
- 82 Hydraulic tandem pump
- 83 Hydraulic unit without pressure reservoir
- A Suction line - oil reservoir to pressure pump
- HS Pressure line - hydraulic unit to ring cylinder
- T Return line - hydraulic unit to oil reservoir
- N Without leveling function:
Return line - hydraulic unit to oil reservoir
With leveling function:
Return line - leveling valve to oil reservoir
- P Pressure line - pressure pump to hydraulic unit

P35-5818-57

Hydraulic Test Program - Component Locations

Hydraulic Components Locations
Model 129.061

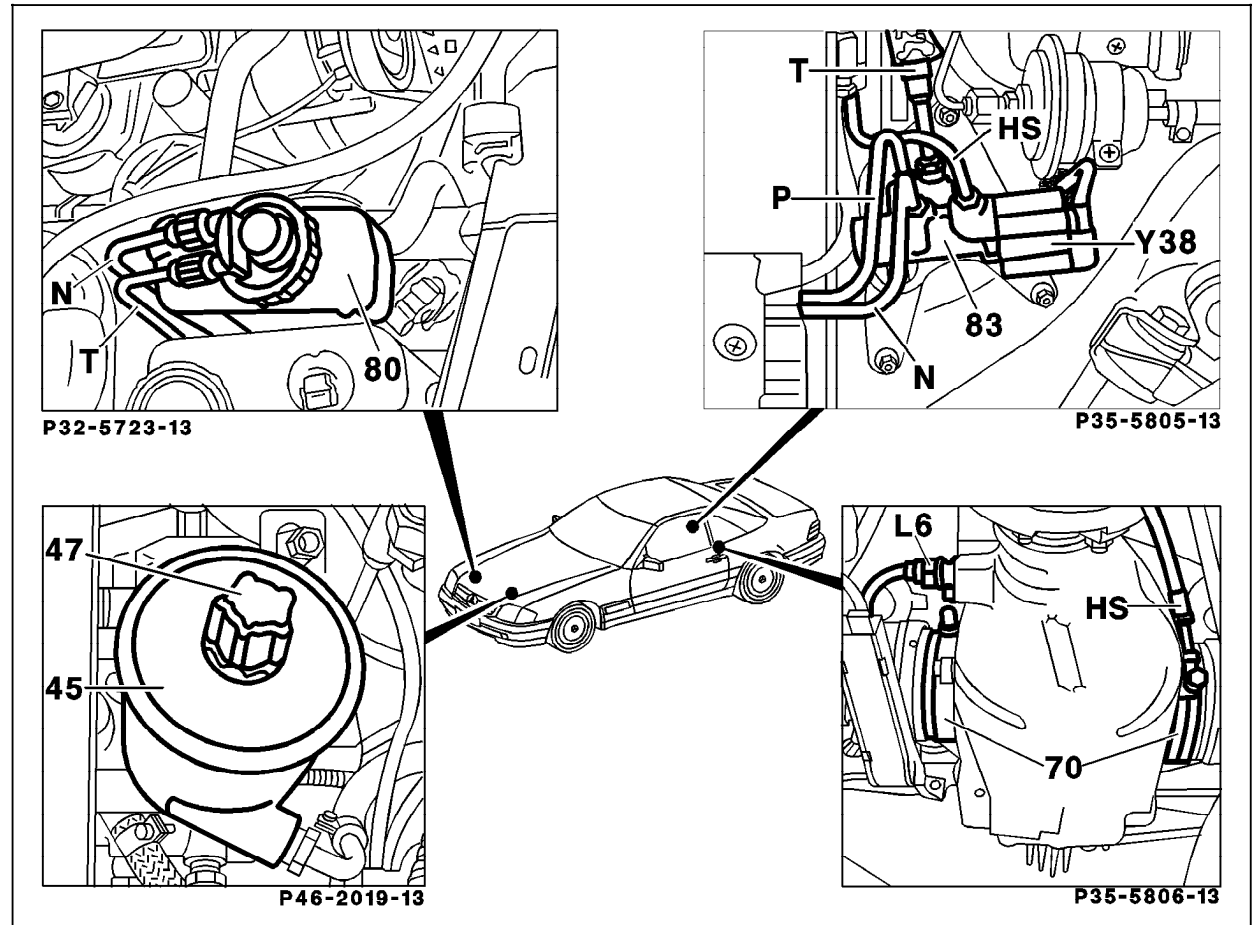
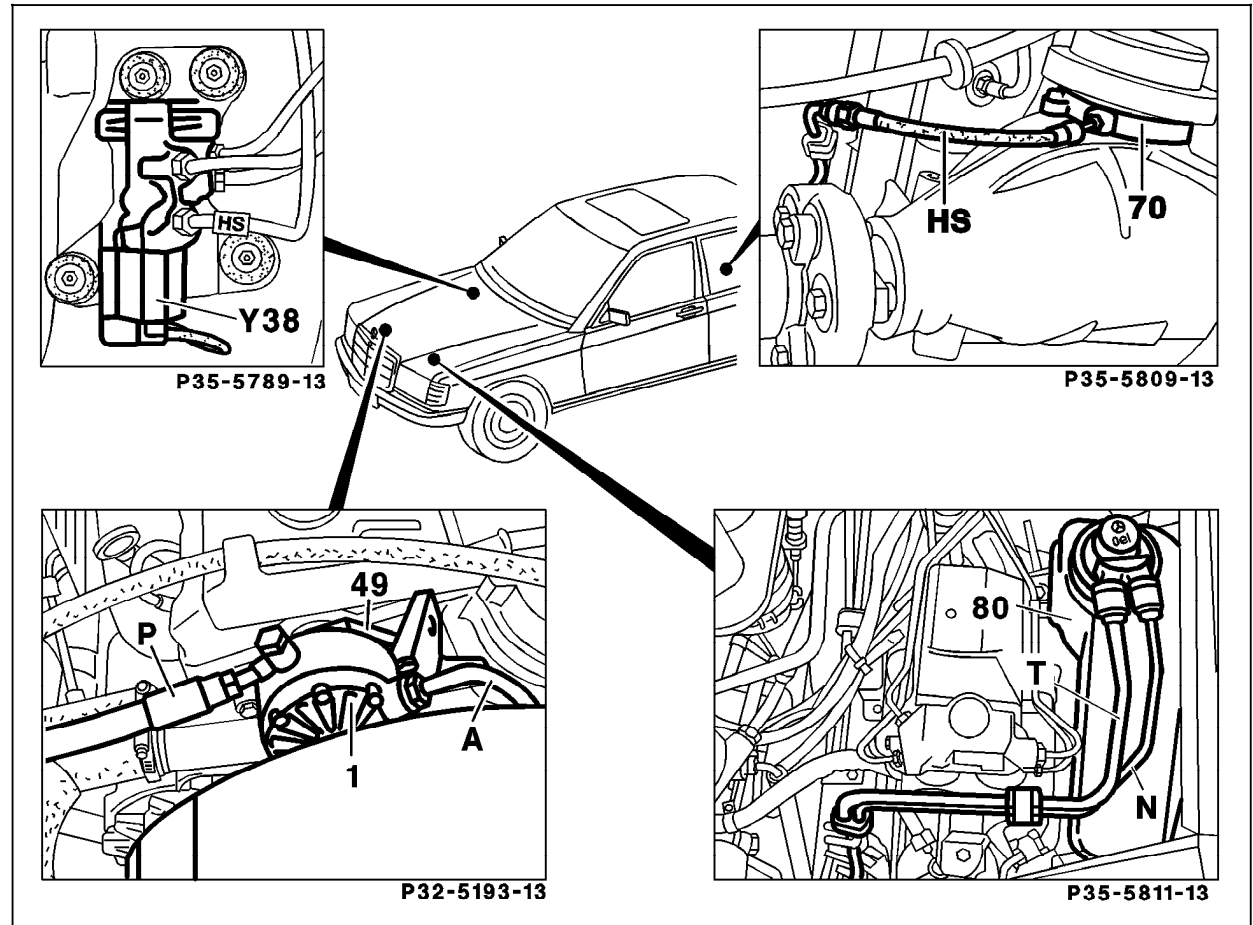


Figure 3

- 45 Tandem pump
- 70 Ring cylinder
- 80 Oil reservoir
- 83 Hydraulic unit without pressure reservoir
- L6 Rear axle vehicle speed sensor
- Y38 ASD valve
- HS Pressure line - hydraulic unit to ring cylinder
- T Return line - hydraulic unit to oil reservoir
- N Without leveling function:
Return line - hydraulic unit to oil reservoir
- With leveling function:
Return line - leveling valve to oil reservoir
- P Pressure line - pressure pump to hydraulic unit

Hydraulic Test Program - Component Locations

Hydraulic Components Locations
Model 201 with engine 102



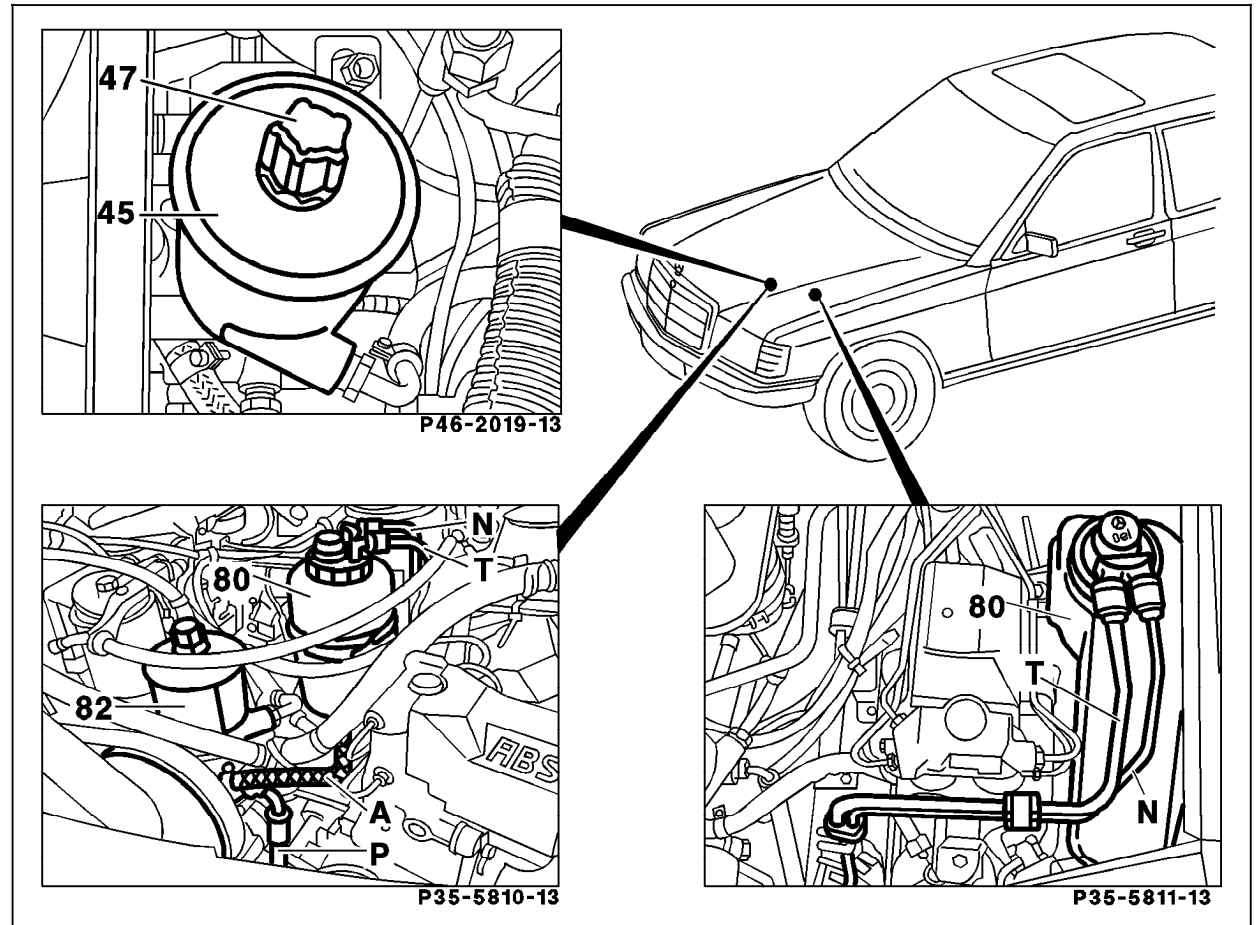
P35-5820-57

Figure 4

- 1 Hydraulic oil pump (camshaft driven)
- 70 Ring cylinder
- 80 Oil reservoir
- 83 Hydraulic unit without pressure reservoir
- A Suction line - oil reservoir to pressure pump
- HS Pressure line - hydraulic unit to ring cylinder
- T Return line - hydraulic unit to oil reservoir
- N Without leveling function:
Return line - hydraulic unit to oil reservoir
- With leveling function:
Return line - leveling valve to oil reservoir
- P Pressure line - pressure pump to hydraulic unit

Hydraulic Test Program - Component Locations

Hydraulic Components Locations
Model 201 with engine 103



P35-5821-57

Figure 5

- 45 Tandem pump
- 80 Oil reservoir
- A Suction line - oil reservoir to pressure pump
- T Return line - hydraulic unit to oil reservoir
- N Without leveling function:
Return line - hydraulic unit to oil reservoir
- With leveling function:
Return line - leveling valve to oil reservoir
- P Pressure line - pressure pump to hydraulic unit

Hydraulic Test Program - Component Locations

Hydraulic Components Locations
Model 202

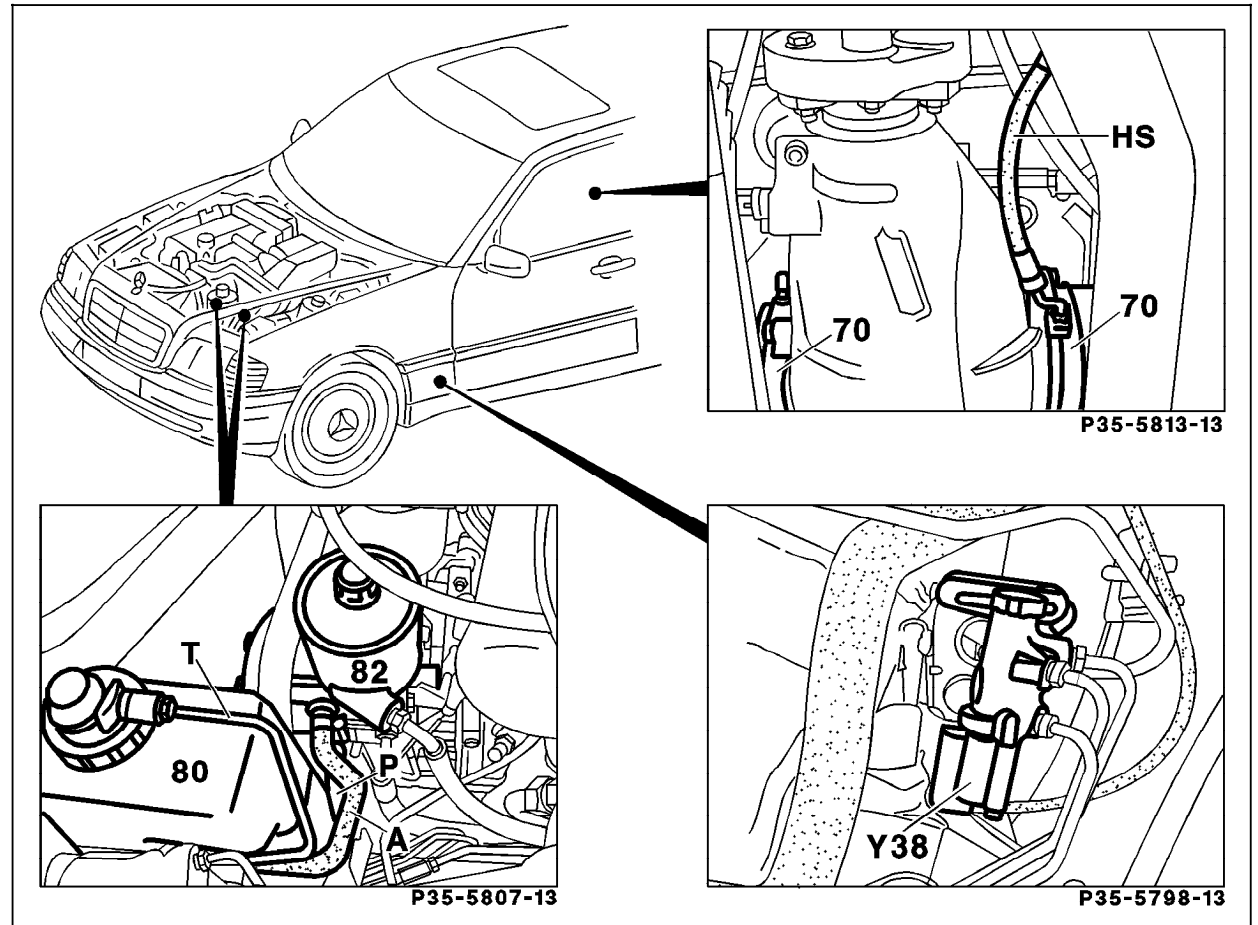


Figure 6

- 70 Ring cylinder
- 80 Oil reservoir
- 82 Tandem pump
- 83 Hydraulic unit without pressure reservoir
- A Suction line - oil reservoir to pressure pump
- HS Pressure line - hydraulic unit to ring cylinder
- T Return line - hydraulic unit to oil reservoir
- N Without leveling function:
Return line - hydraulic unit to oil reservoir
- With leveling function:
Return line - leveling valve to oil reservoir
- P Pressure line - pressure pump to hydraulic unit

P35-5822-57