

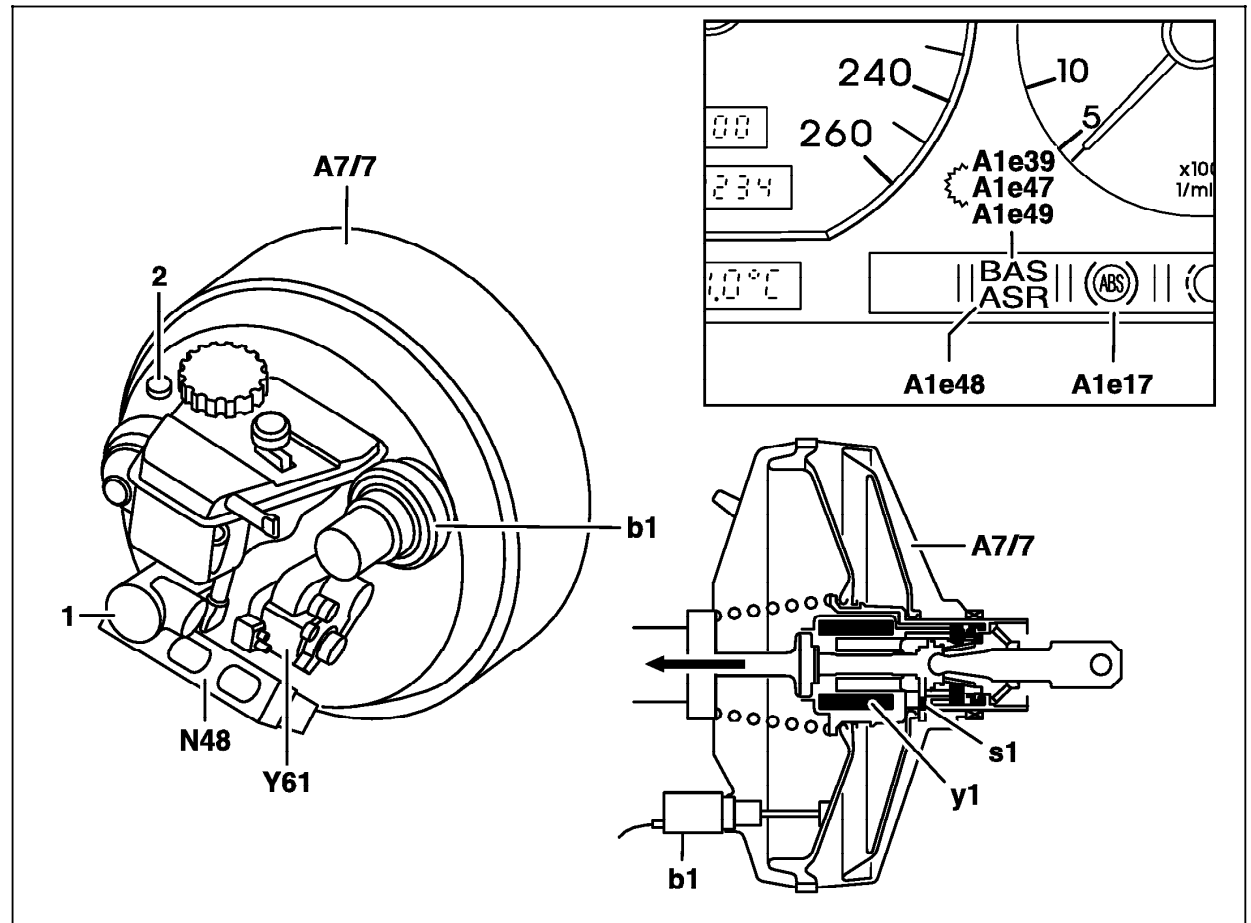
Electrical Test Program – Component Locations

Figure 1

- 1 Tandem master cylinder
- 2 Vacuum connection
- A1e17 ABS MIL
- A1e39 BAS warning lamp
- A1e47 BAS/ESP MIL
- A1e48 BAS/ASR MIL
- A1e49 BAS/ETS MIL
- A7/7 Brake booster (BAS)
- b1 Membrane travel sensor (BAS)
- s1 Release switch (BAS)
- y1 Solenoid valve (BAS)
- N48 BAS control module
(Integrated into ESP/SPS control module (N47-5), in vehicles with ESP and engine 112, 113 and Model 210 with engine 606)
Models 163, 220 integrated into ESP/SPS control module (N47-5) as well.
- Y61 Master brake cylinder switch over valve
(Models 129.067 with ESP, 129.076, 140.04/05/07)



Model 220: In place of the MIL, a multifunction indicator (A1p13) will be used in the instrument cluster (A1)



P42.31-0201-06