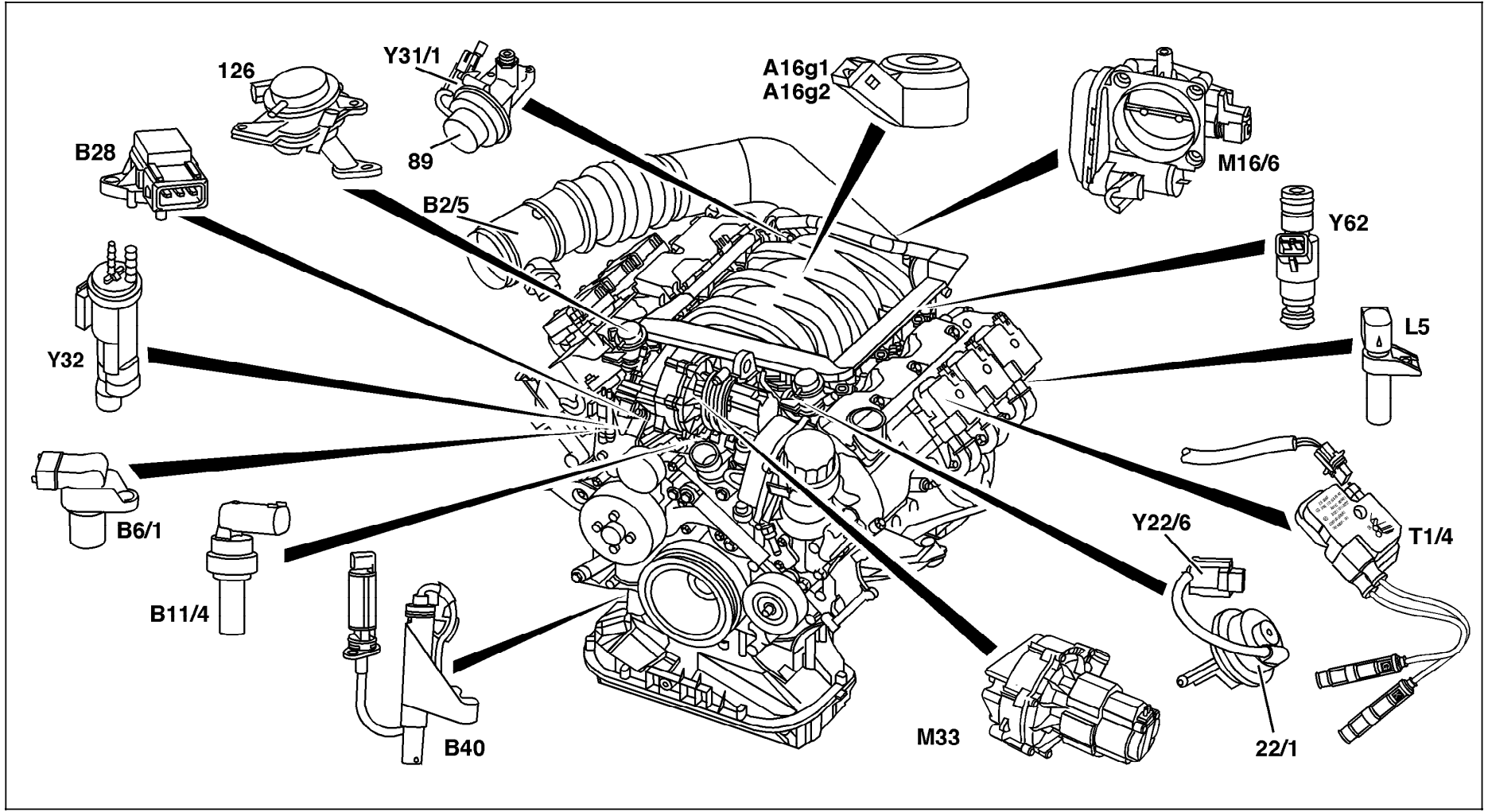


Electrical Test Program – Component Locations



Components on engine, Model 163

P07.61-0520-09

Figure 1

Electrical Test Program – Component Locations

Components on engine
Model 163

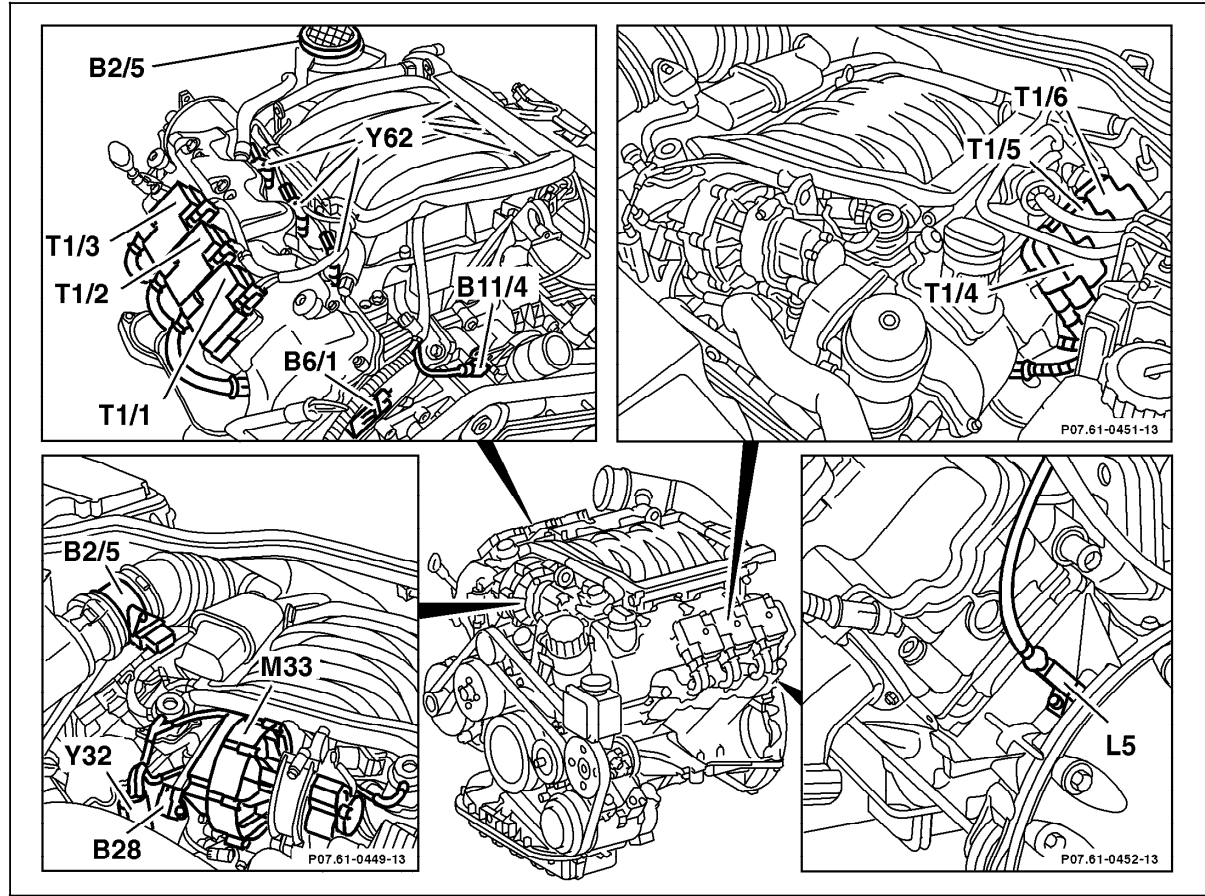


Figure 2

- B2/5 Hot film MAF sensor
- B6/1 Camshaft Hall-effect sensor
- B11/4 ECT sensor
- B28 Pressure sensor (only USA)
- L5 CKP sensor
- M33 AIR pump (only USA)
- T1/1 Ignition coil 1
- T1/2 Ignition coil 2
- T1/3 Ignition coil 3
- T1/4 Ignition coil 4
- T1/5 Ignition coil 5
- T1/6 Ignition coil 6
- Y32 Air pump switchover valve (only USA)
- Y62 Injectors

P07.61-2013-06

Electrical Test Program – Component Locations

Components on engine
Model 163

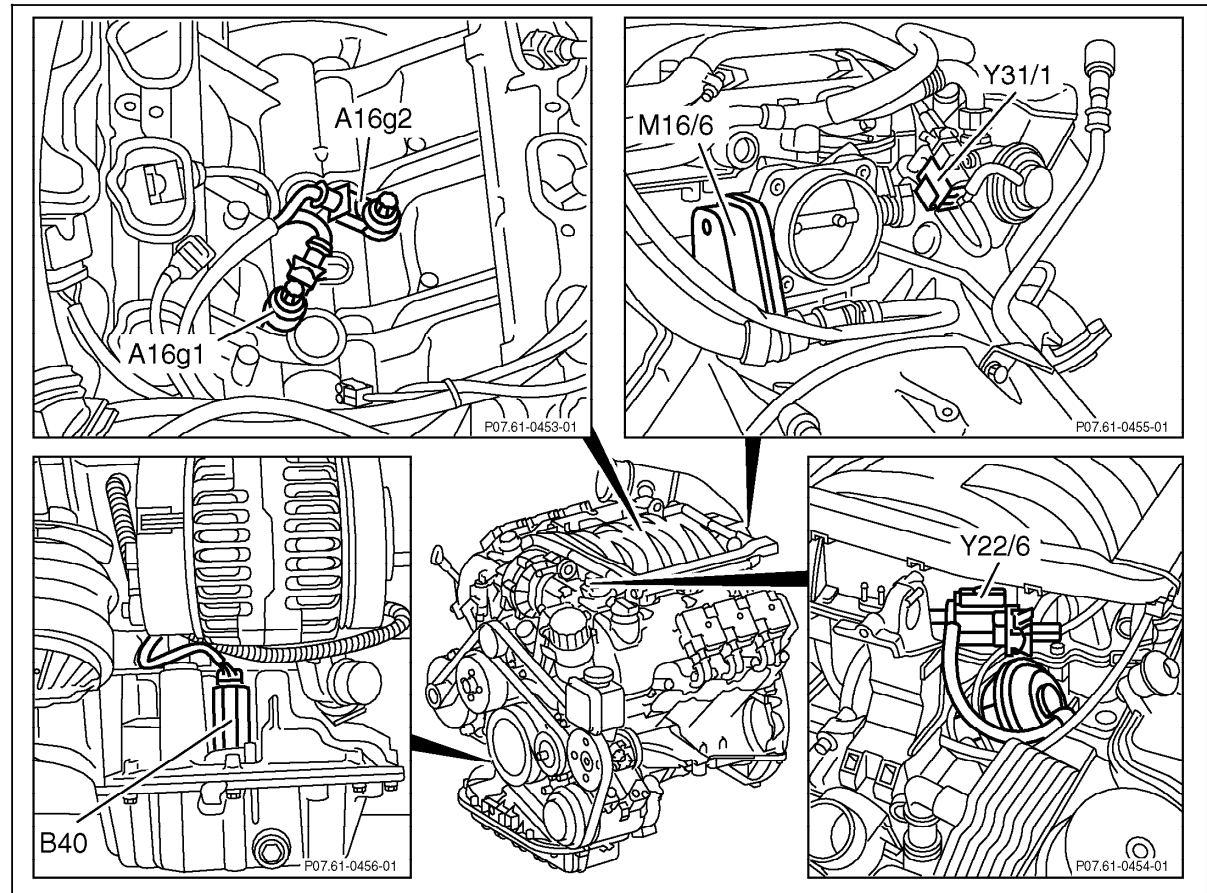


Figure 3

- A16g1 KS 1 (right side of engine)
- A16g2 KS 2 (left side of engine)
- M16/1 EA/CC/ISC actuator
- Y22/6 Resonance intake manifold switchover valve
- Y31/1 EGR valve vacuum transducer
- B40 Oil sensor (level/temperature/quality)

P07.61-0460-06

Electrical Test Program – Component Locations

Engine Compartment
Model 163

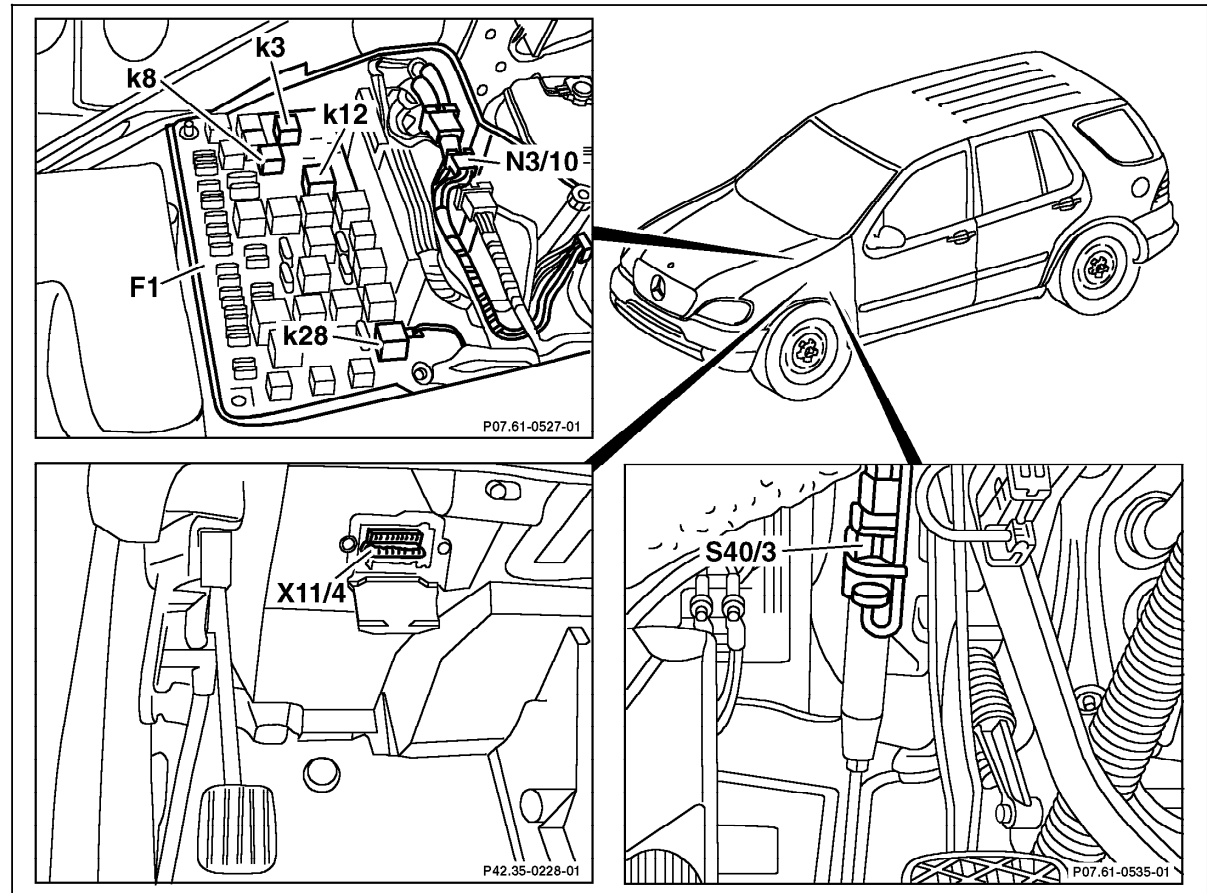


Figure 4

- F1 Fuse and relay box with:
 k3 fuel pump relay
 k8 starter relay
 k12 circuit 15 relay
 k28 secondary air injection pump relay (only **USA**)
- N3/10 Engine control module (ME-SFI)
- S40/3 Clutch pedal switch (not **USA**)
- X11/4 data link connector (DTC readout)

P07.61-0544-06

Electrical Test Program – Component Locations

Engine compartment
Model 163

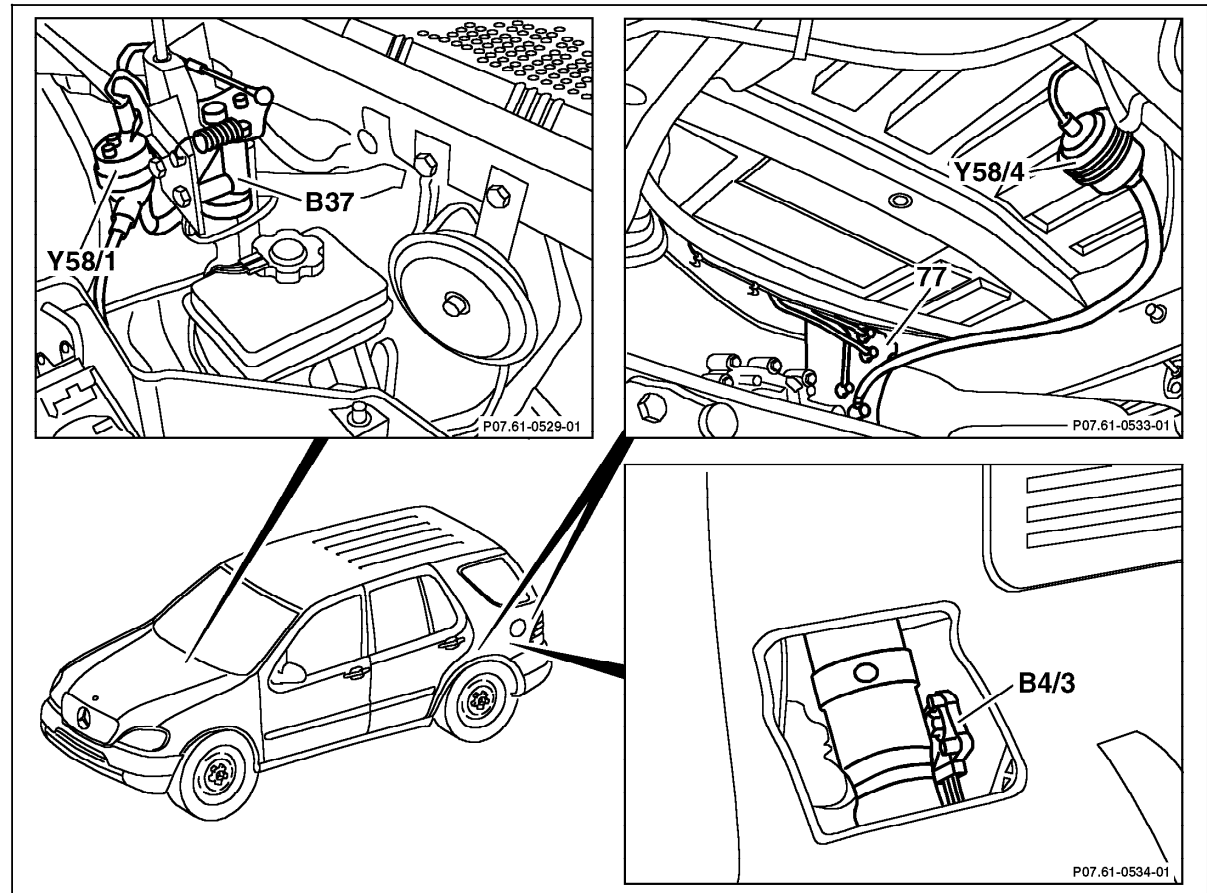


Figure 5

- B4/3 Fuel tank pressure sensor (only USA)
- B37 Pedal value sensor
- Y58/1 Purge control valve
- Y58/4 Activated charcoal canister shut-off valve (only USA)
- 77 Activated charcoal canister

P07.61-0545-06

Electrical Test Program – Component Locations

Engine compartment
Model 163

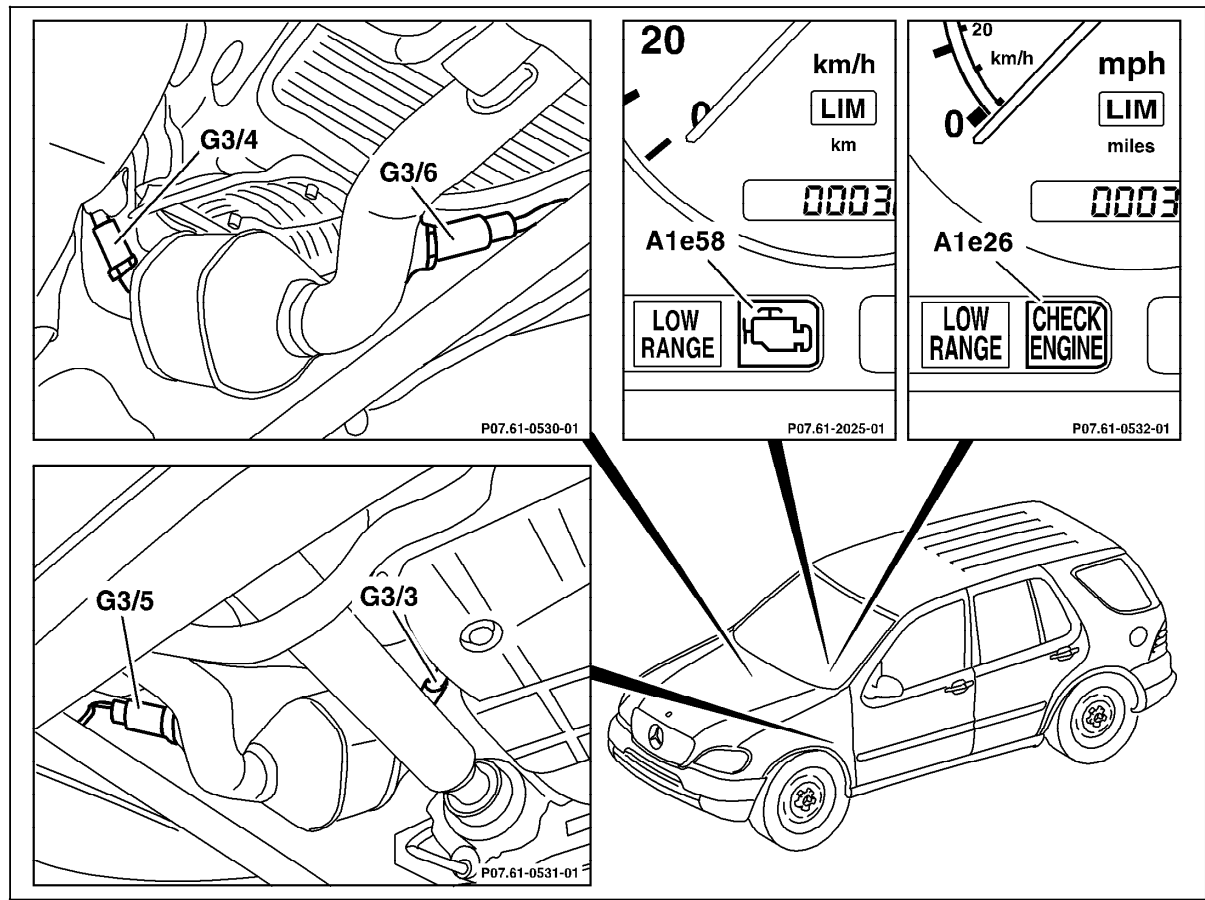
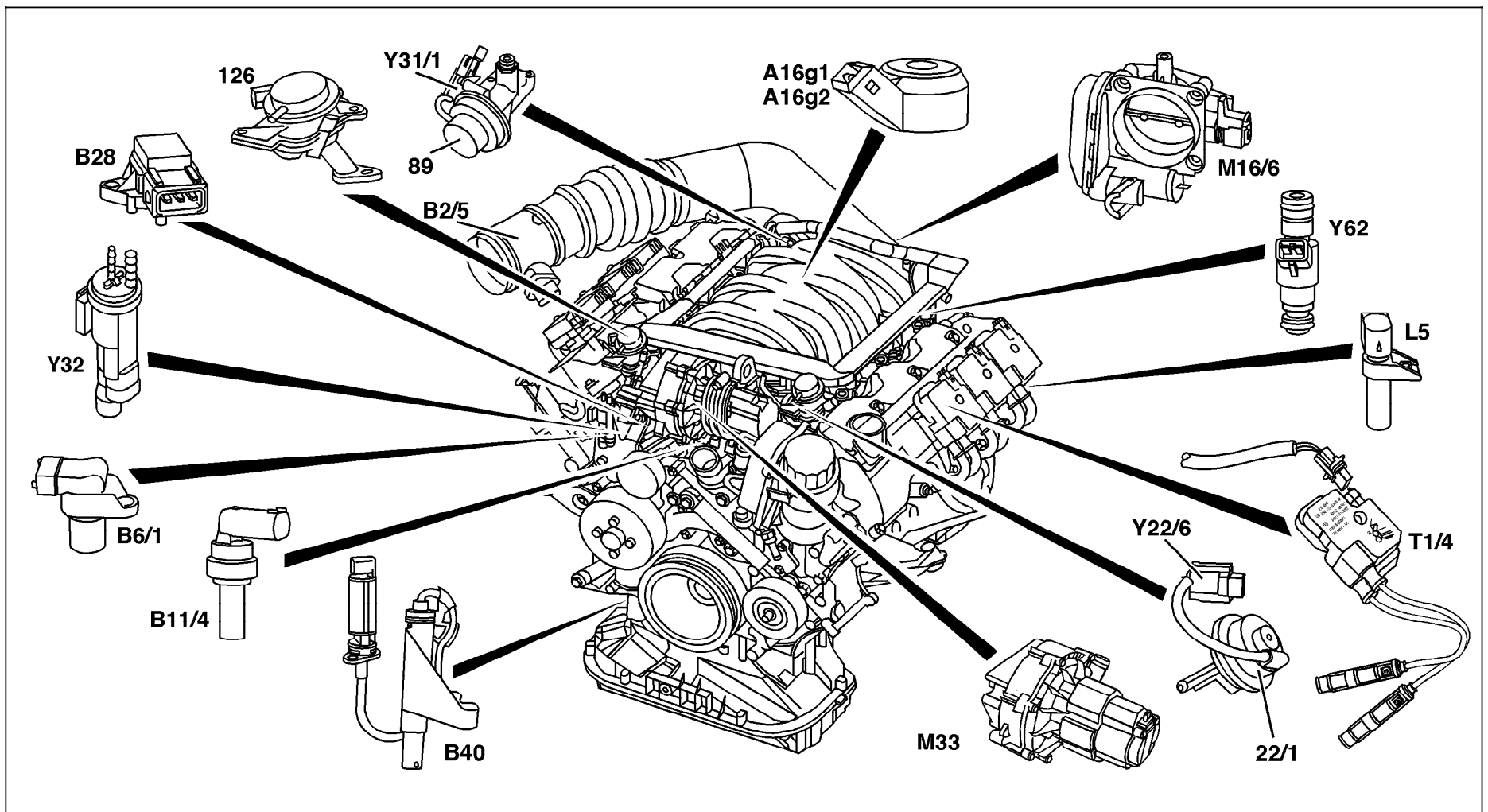


Figure 6

- A1e26 "CHECK ENGINE" MIL (only USA)
- A1e58 Engine diagnostics indicator lamp (not USA)
- G3/3 Left O2S 1 (before TWC)
- G3/4 Right O2S 1 (before TWC)
- G3/5 Left O2S 2 (after TWC) (only USA)
- G3/6 Right O2s 2 (after TWC) (only USA)

P07.61-2028-06

Electrical Test Program – Component Locations



Components on engine, Models 202/208

P07.61-0520-09

Figure 7

Electrical Test Program – Component Locations

Components on engine
Models 202/208

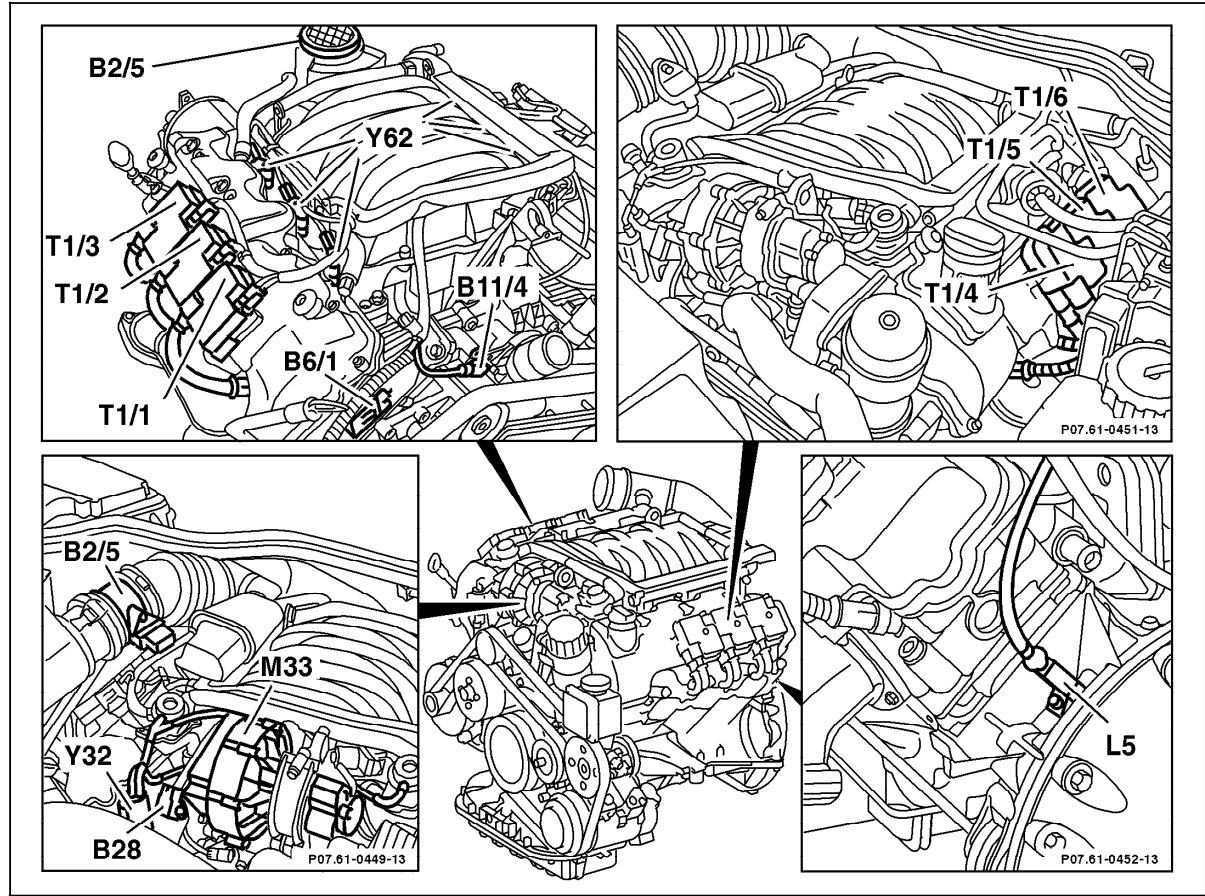


Figure 8

- B2/5 Hot film MAF sensor
- B6/1 Camshaft Hall-effect sensor
- B11/4 ECT sensor
- B28 Pressure sensor (only USA)
- L5 CKP sensor
- M33 AIR pump (only USA)
- T1/1 Ignition coil 1
- T1/2 Ignition coil 2
- T1/3 Ignition coil 3
- T1/4 Ignition coil 4
- T1/5 Ignition coil 5
- T1/6 Ignition coil 6
- Y32 Air pump switchover valve (only USA)
- Y62 Injectors

P07.61-2013-06

Electrical Test Program – Component Locations

Components on engine
Models 202/208

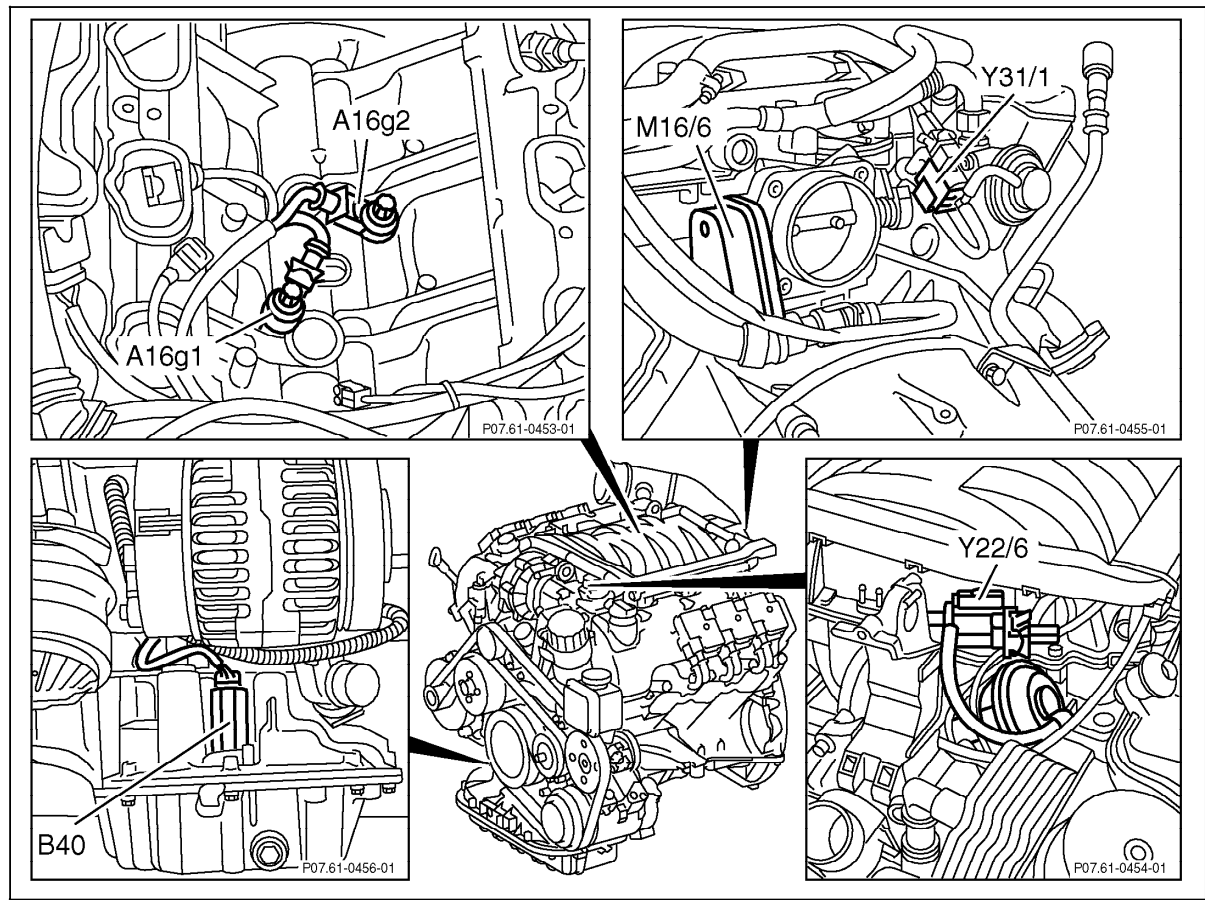


Figure 9

- A16g1 KS 1 (right side of engine)
- A16g2 KS 2 (left side of engine)
- M16/1 EA/CC/ISC actuator
- Y22/6 Resonance intake manifold switchover valve
- Y31/1 EGR valve vacuum transducer
- B40 Oil sensor (level/temperature/quality)

P07.61-0460-06

Electrical Test Program – Component Locations

Engine compartment
Models 202/208

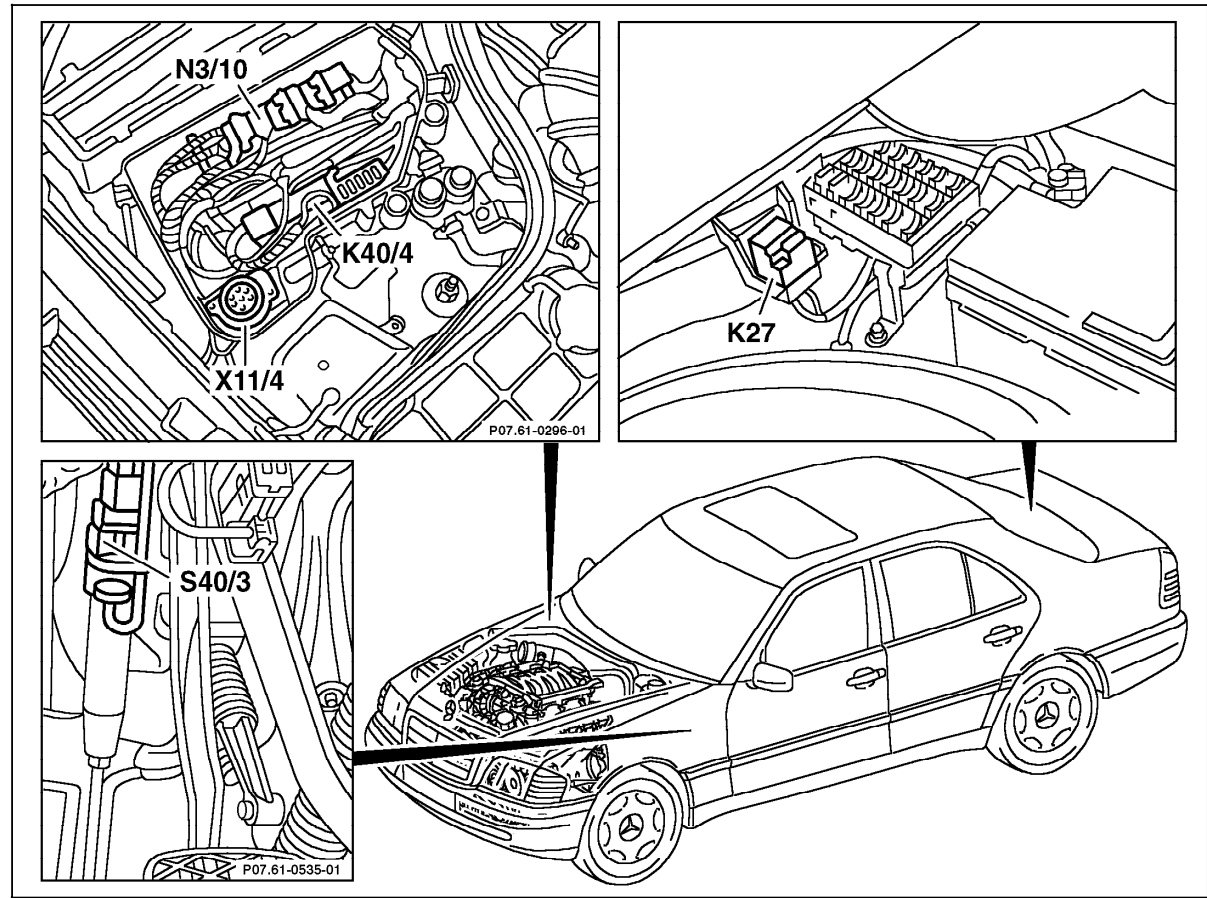


Figure 10

- K27 FP relay module
- K40/4 Passenger-side fuse and relay module box with:
k2 starter relay
k3 relay module AIR pump (only USA)
- N3/10 Engine control module (ME-SFI)
- S40/3 Clutch pedal switch (not USA)
- X11/4 Data link connector (DTC readout) (38-pole)

P07.61-0547-06

Electrical Test Program – Component Locations

Engine compartment
Models 202/208

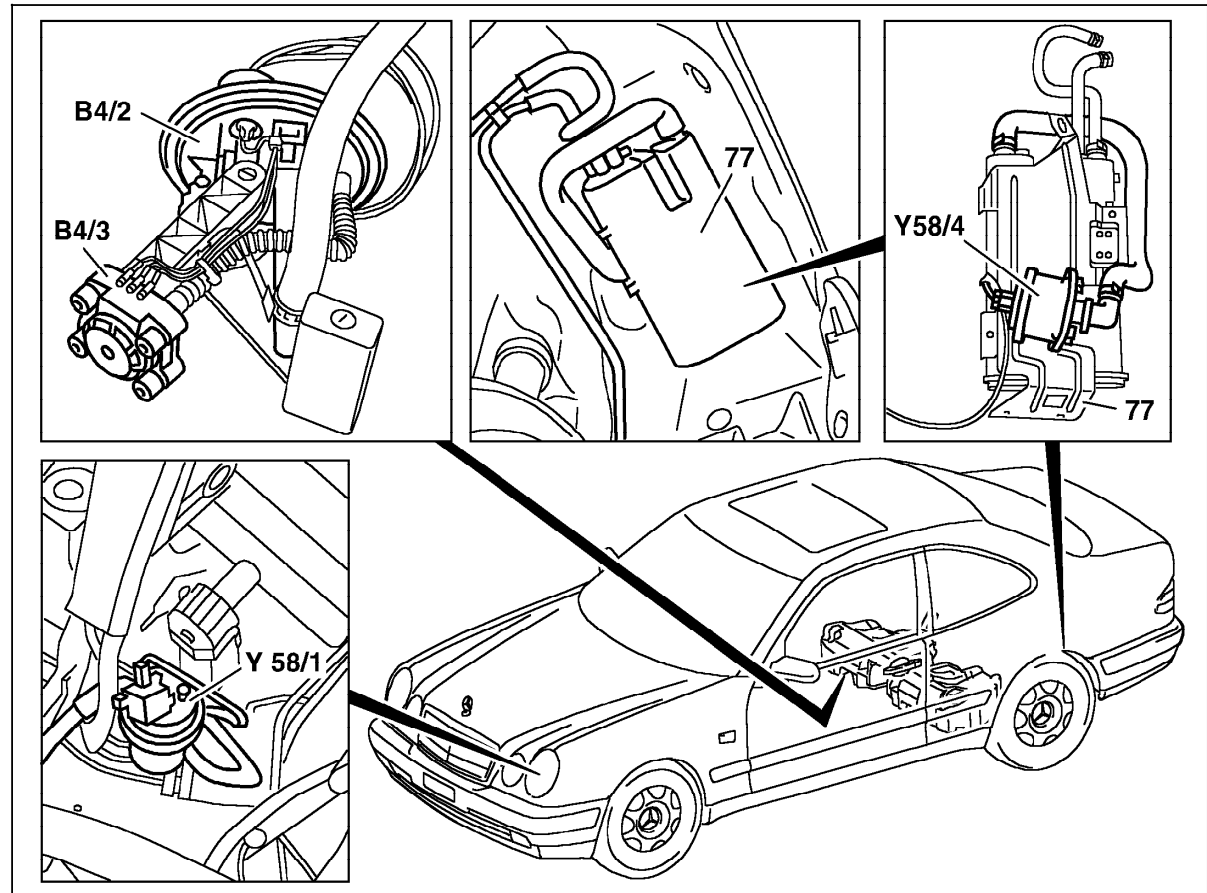


Figure 11

- B4/2 Right fuel level sensor
- B4/3 Fuel tank pressure sensor (only USA)
- Y58/1 Purge control valve
- Y58/4 Activated charcoal canister shut-off valve (only USA)
- 77 Activated charcoal canister

P07.61-2032-06

Electrical Test Program – Component Locations

Engine compartment
Models 202/208

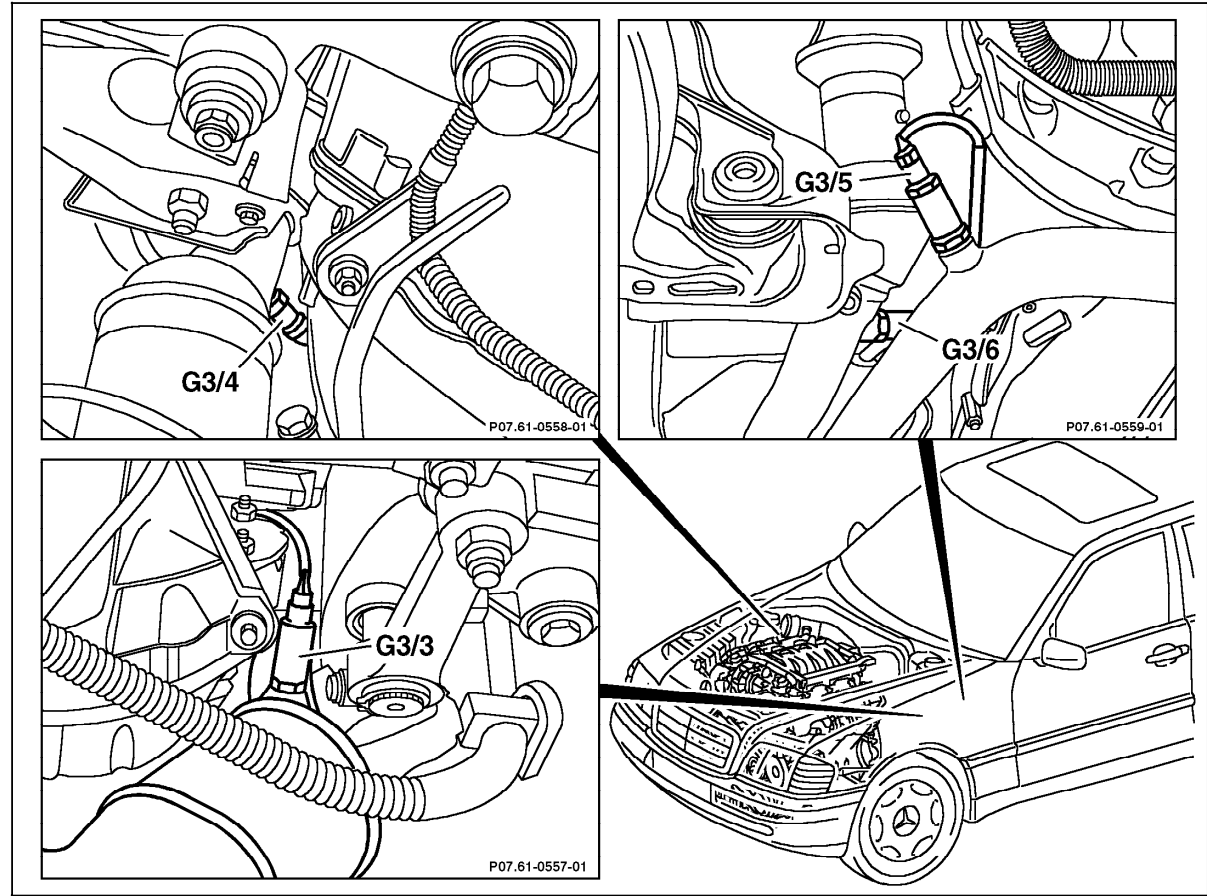


Figure 12

- G3/3 Left O2S 1 (before TWC)
- G3/4 Right O2S 1 (before TWC)
- G3/5 Left O2S 2 (after TWC) (only USA)
- G3/6 Right O2s 2 (after TWC) (only USA)

Electrical Test Program – Component Locations

Engine compartment
Models 202/208

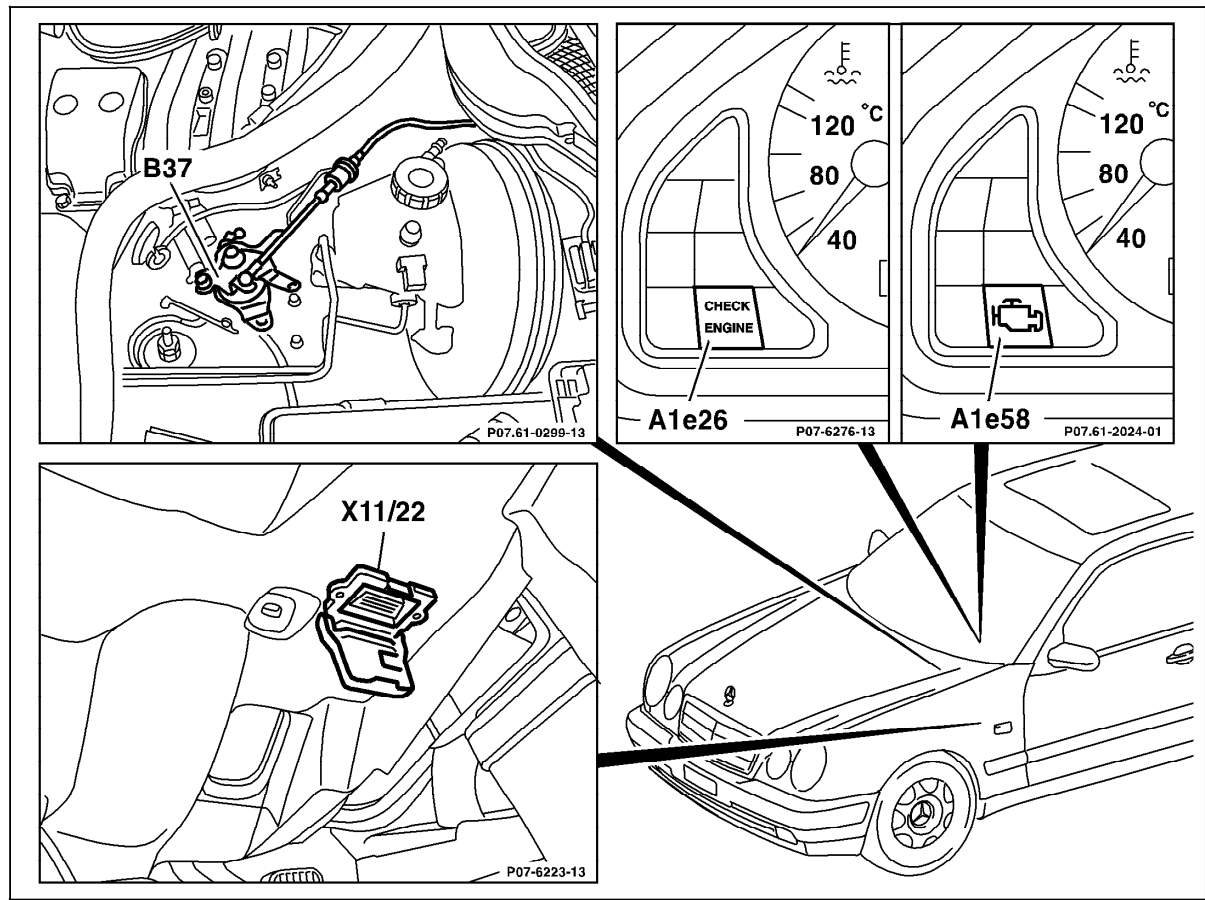
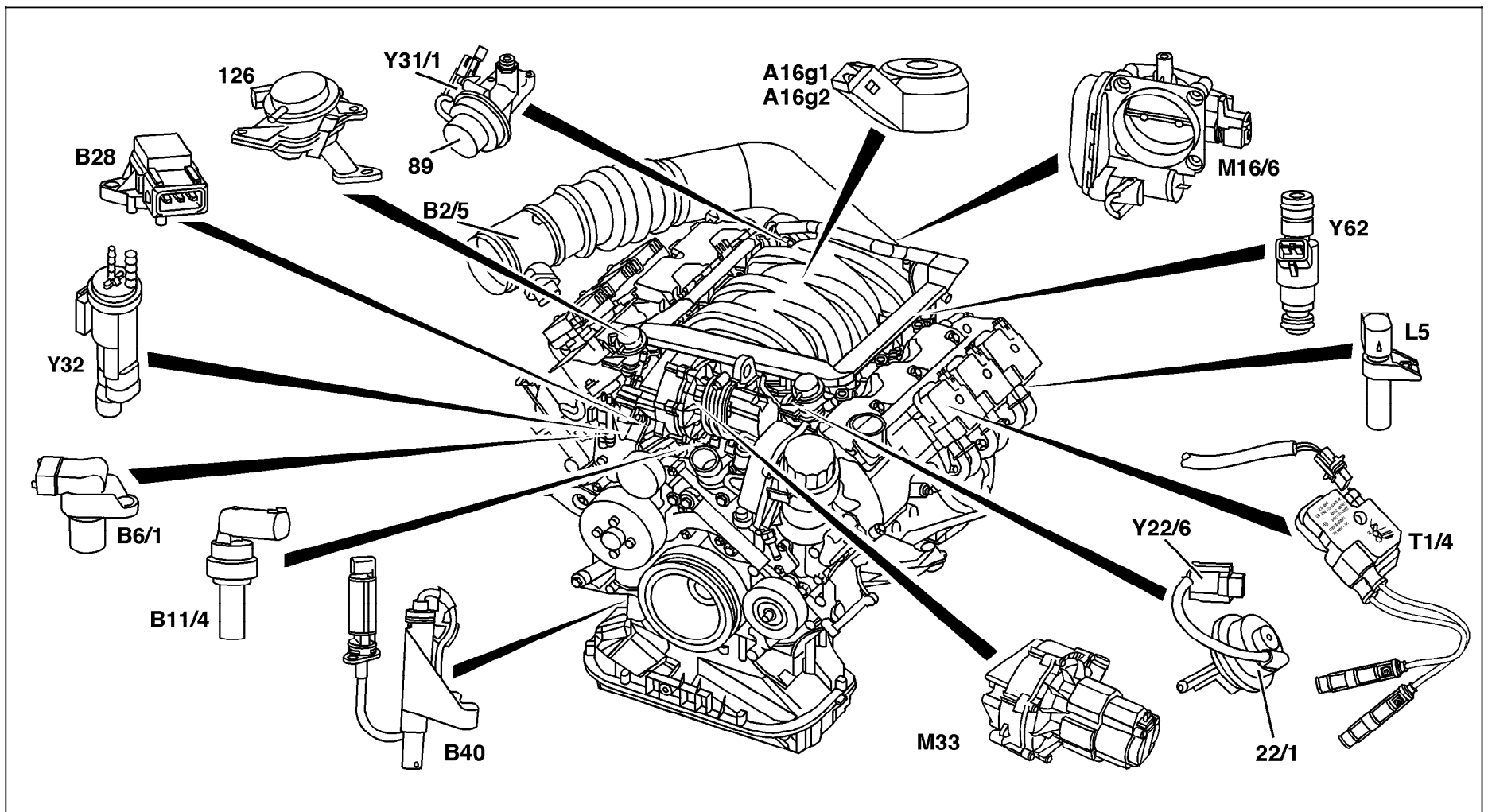


Figure 13

- A1e26 "CHECK ENGINE " MIL (only USA)
- A1e58 Engine diagnostics indicator lamp (not USA)
- B37 Pedal value sensor
- X11/22 Diagnostic module (OBD II) generic scan tool connector (only USA)

P07.61-2031-06

Electrical Test Program – Component Locations



Components on engine, Model 210

P07.61-0520-09

Figure 14

Electrical Test Program – Component Locations

Components on engine
Model 210

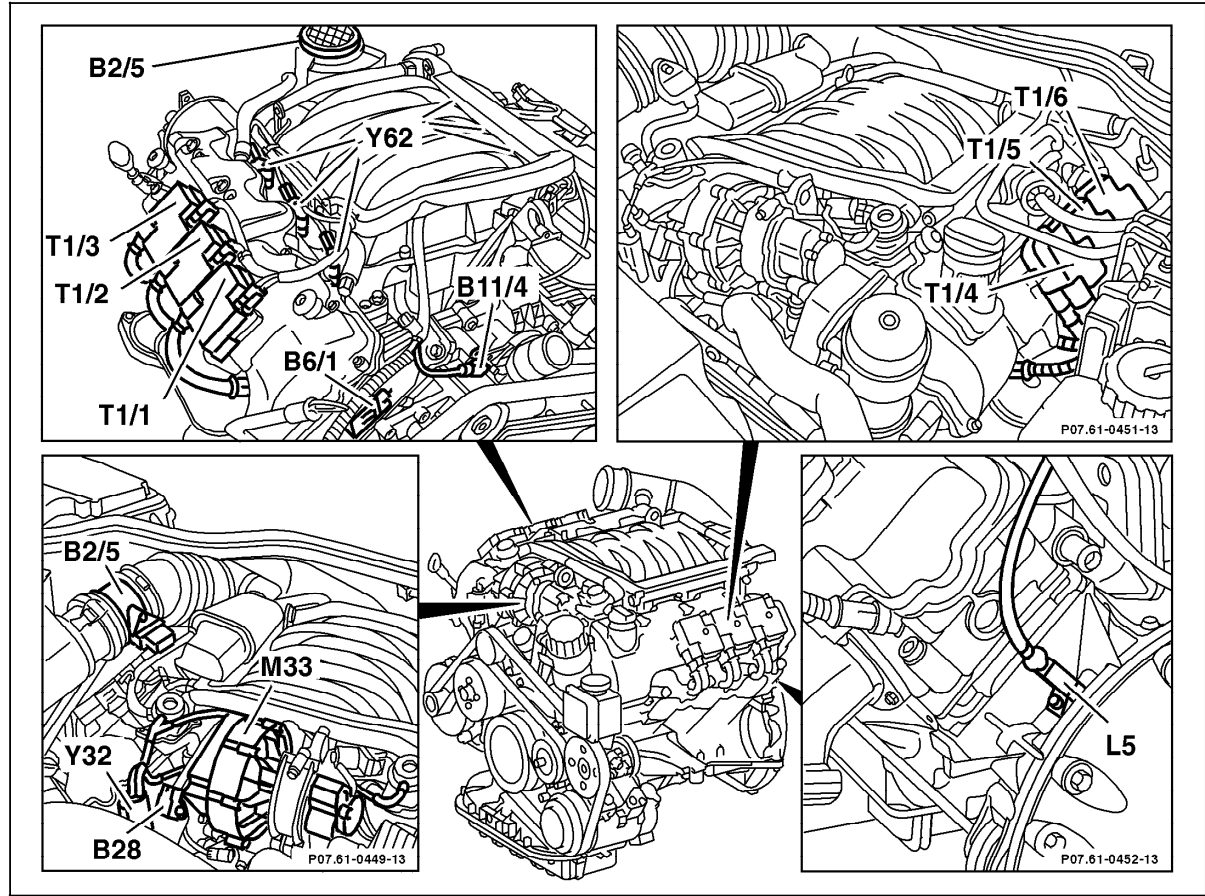


Figure 15

- B2/5 Hot film MAF sensor
- B6/1 Camshaft Hall-effect sensor
- B11/4 ECT sensor
- B28 Pressure sensor (only USA)
- L5 CKP sensor
- M33 AIR pump (only USA)
- T1/1 Ignition coil 1
- T1/2 Ignition coil 2
- T1/3 Ignition coil 3
- T1/4 Ignition coil 4
- T1/5 Ignition coil 5
- T1/6 Ignition coil 6
- Y32 Air pump switchover valve (only USA)
- Y62 Injectors

P07.61-2013-06

Electrical Test Program – Component Locations

Components on engine
Model 210

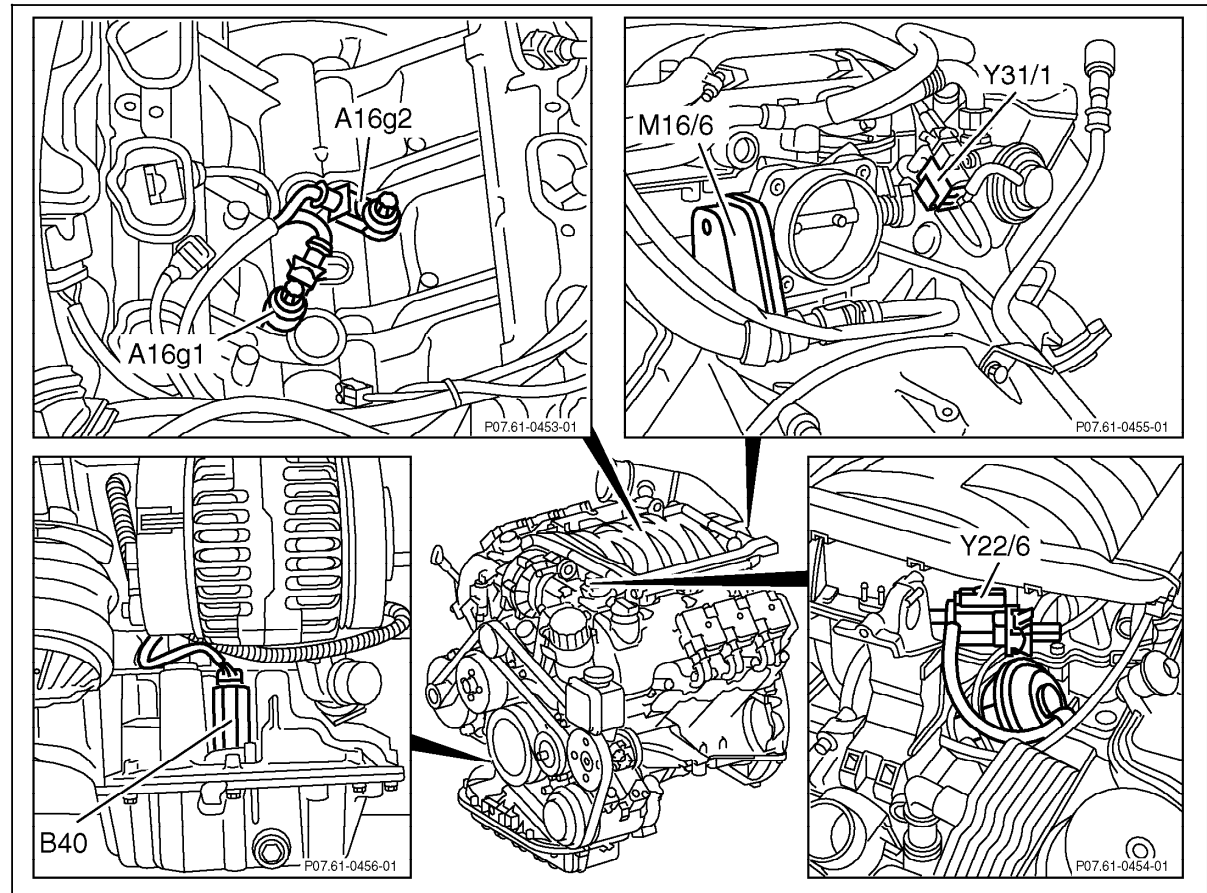


Figure 16

- A16g1 KS 1 (right side of engine)
- A16g2 KS 2 (left side of engine)
- M16/1 EA/CC/ISC actuator
- Y22/6 Resonance intake manifold switchover valve
- Y31/1 EGR valve vacuum transducer
- B40 Oil sensor (level/temperature/quality)

P07.61-0460-06

Electrical Test Program – Component Locations

Engine Compartment
Model 210

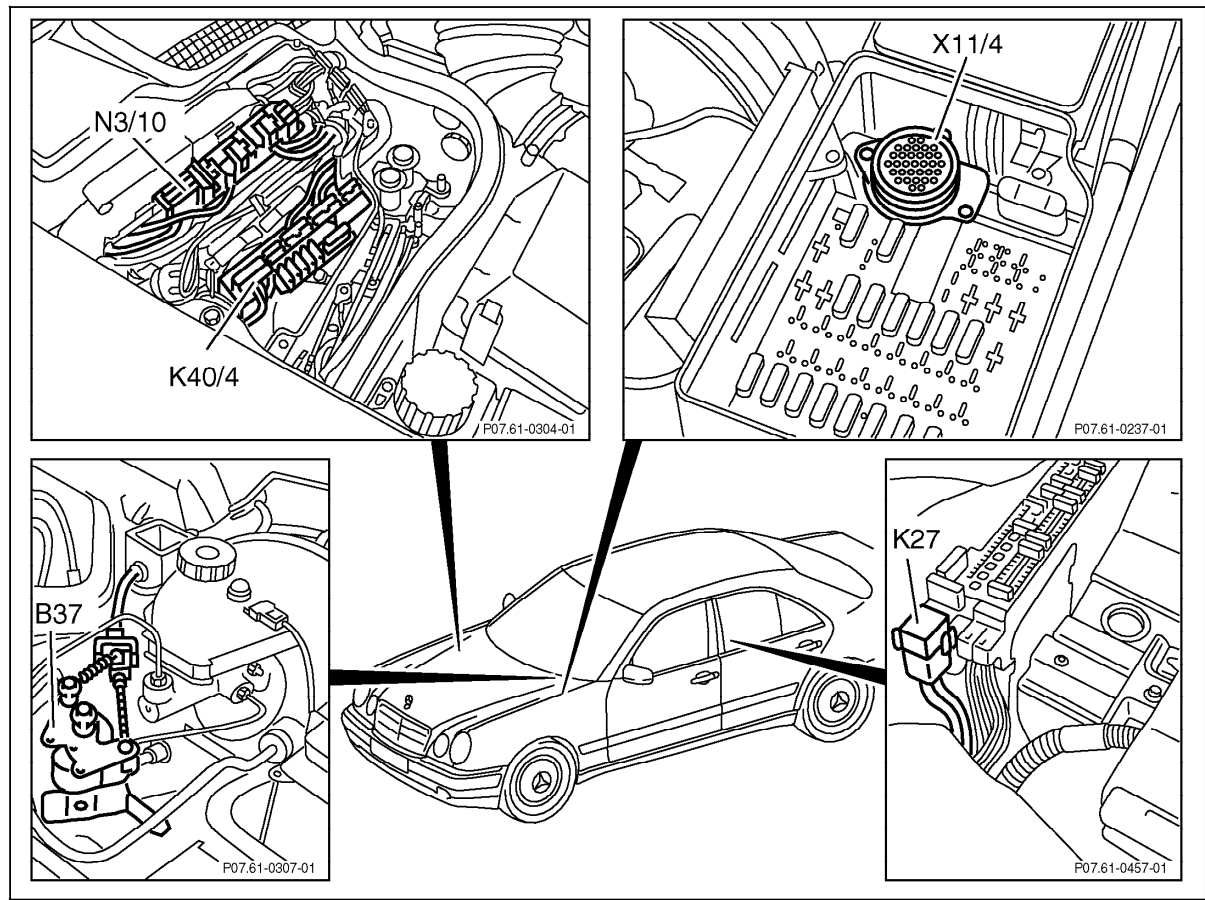


Figure 17

- B37 Pedal value sensor
- K27 FP relay module
- K40/4 Passenger-side fuse and relay module box with:
 k2 Starter relay
 k3 relay module Air pump (only USA)
- N3/10 Engine control module (ME-SFI)
- X11/4 Data link connector (DTC readout) (38-pole)

P07.61-0461-06

Electrical Test Program – Component Locations

Engine Compartment
Model 210

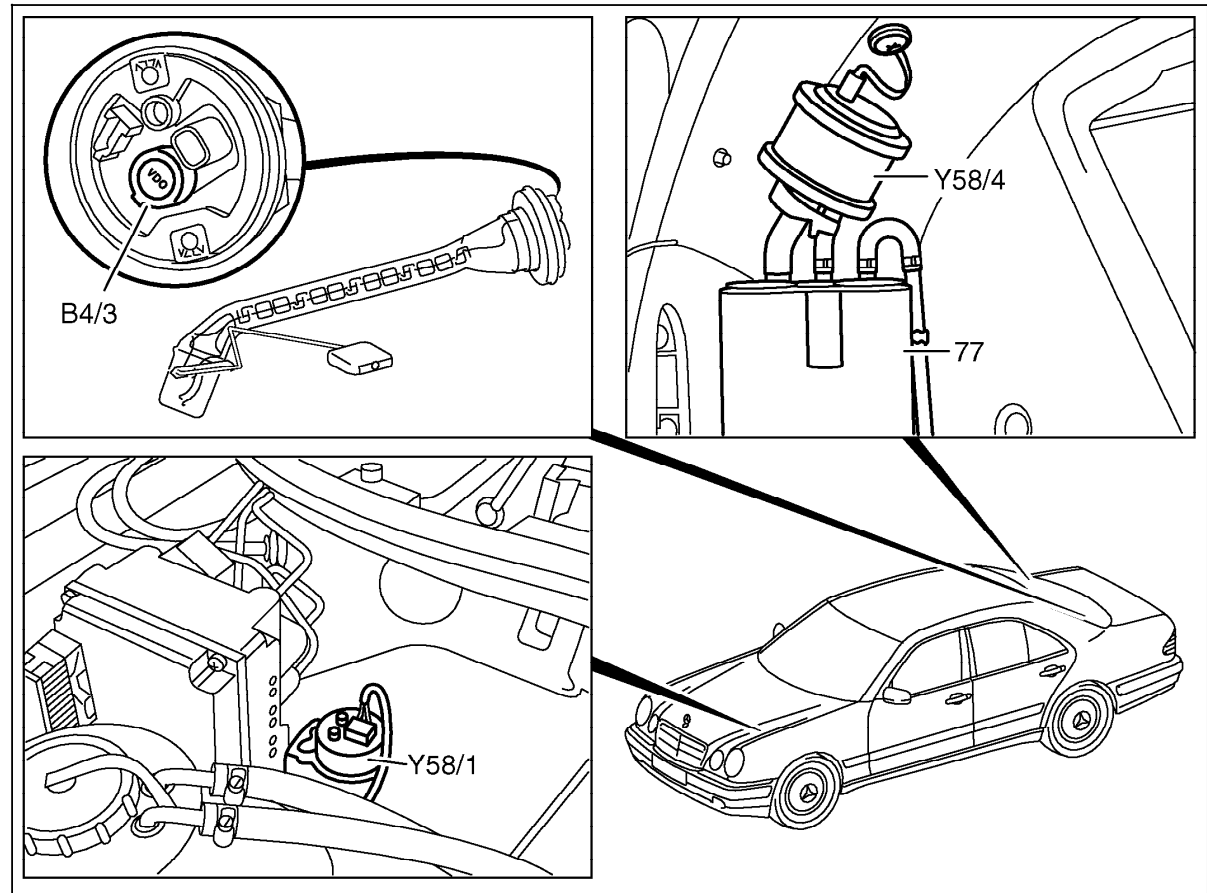


Figure 18

- B4/3 Fuel tank pressure sensor (only USA)
- Y58/1 Purge control valve
- Y58/4 Activated charcoal canister shut-off valve (only USA)
- 77 Activated charcoal canister

P07.61-0288-06

Electrical Test Program – Component Locations

Engine Compartment
Model 210

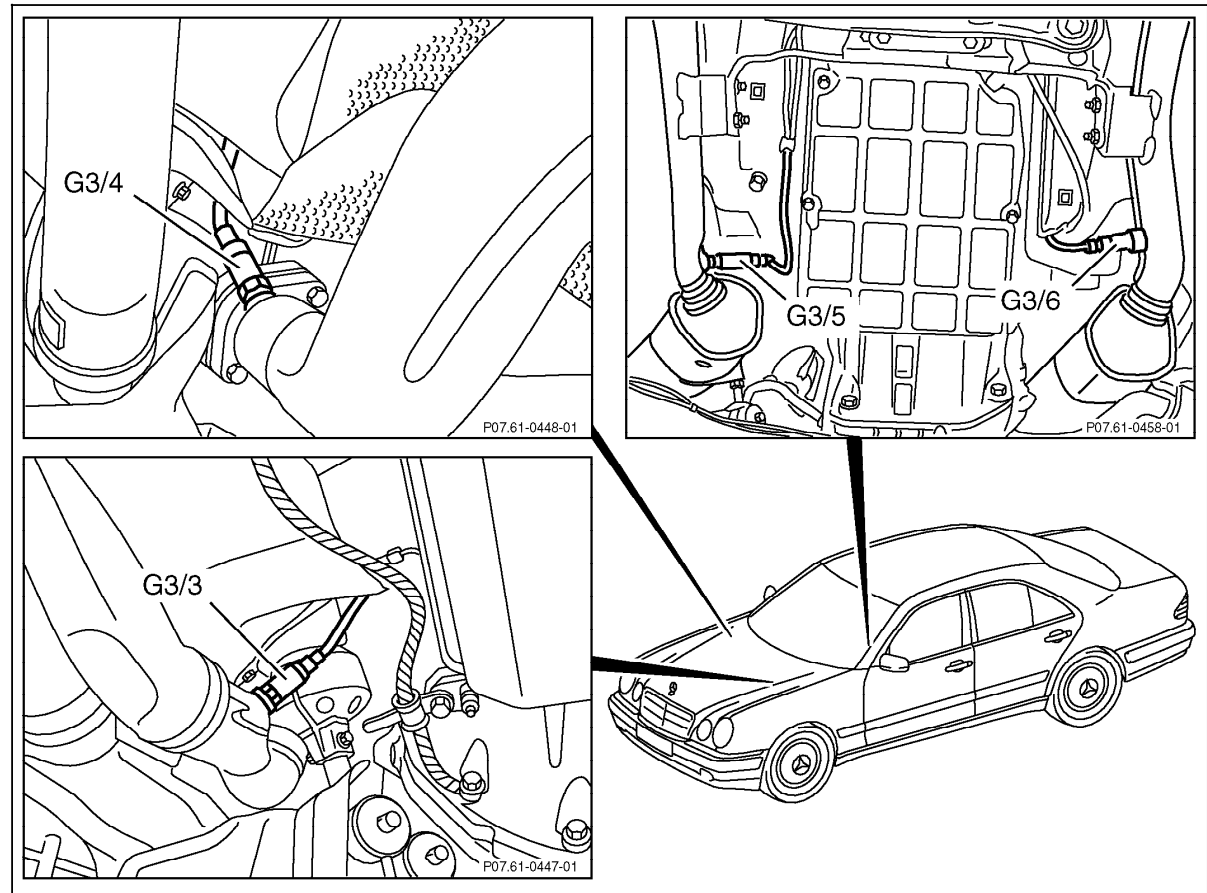


Figure 19

- G3/3 Left O2S 1 (before TWC)
- G3/4 Right O2S 1 (before TWC)
- G3/5 Left O2S 2 (after TWC) (only USA)
- G3/6 Right O2S 2 (after TWC) (only USA)

Electrical Test Program – Component Locations

Engine Compartment
Model 210

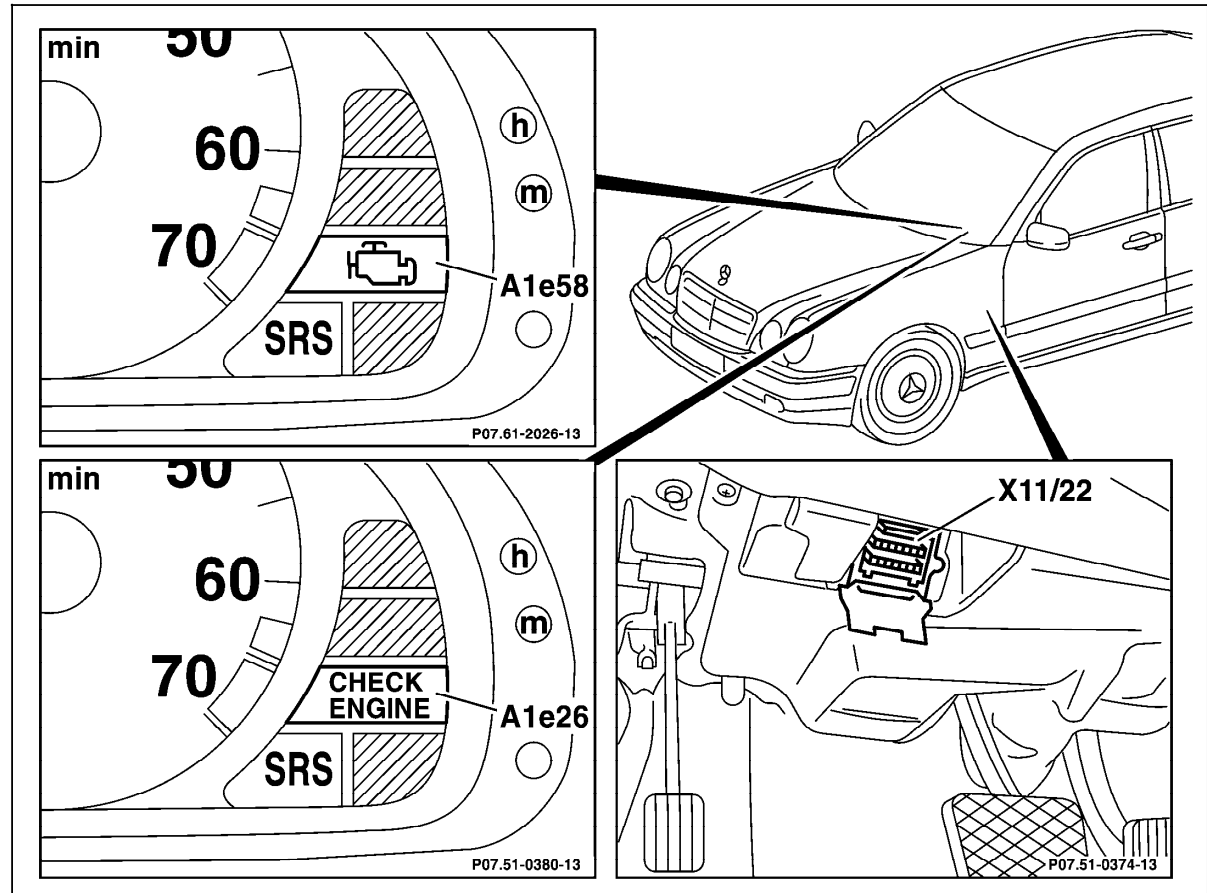


Figure 20

- A1e26 "CHECK ENGINE MIL" (only USA)
- A1e58 Engine diagnostics indicator lamp (not USA)
- X11/22 Diagnostic module (OBD II) generic scan tool connector (only USA)

P07.61-2034-06